



## **Product Description:**

KWP Eco-side™ Engineered wood siding is wood-based product used for exterior wall covering. It is manufactured from panels Type 5 panel sidings in textured or smooth surfaces, factory finished on one side. The finished siding shall conform to the requirements of ANSI A135.6-2006.

### **1. Types**

Lap Siding – Engineered wood siding boards designed to be installed horizontally from the bottom of the wall to the top with the bottom edge of each board overlapping the top edge of the panel below.

### **2. Surface**

Prefinished – Siding that has been factory painted on three sides and board ends, which does not require additional painting at the time of installation unless the boards are field-cut.

### **3. Dimensions**

**3.1** The length and width for all products is given in the table below. Tolerances for length shall be plus 0 mm (0 in) and minus 4.8 mm (3/16 in) from the nominal length.

Profile	Length		Width		Thickness	
	m	foot	mm	inch	mm	inch
Eco-Side™	3.658	12	152	6	9.5	0.375
	3.658	12	203	8	9.5	0.375

**3.3** Trimboard is produced in following dimensions

Thickness	Length	Width
31.75 mm (5/4")	3.658 m (12")	10.16 cm (4"), 12.7 cm (5"), 15.24 cm (6"), 20.32 cm (8"), 25.4 cm (10"), 30.48 cm (12")
19.05 mm (3/4")	3.658 m (12")	10.16 cm (4"), 12.7 cm (5"), 15.24 cm (6"), 20.32 cm (8"), 25.4 cm (10"), 30.48 cm (12")

### **4. Properties**

**4.1 Engineered wood** – The unfinished board used as the base material for siding shall conform to the requirements of ANSI A135.6-2006. The tests shall be performed on uncoated engineered wood having a plain surface. The engineered wood used shall be representative of any patterned engineered wood produced and submitted for testing.

**4.2 Siding** – The Ecoside™ Siding shall conform to the requirements of CAN/CGSB-11.5-M and ANSI A135.6. Typical properties are given in Table

# Aluminum Soffit

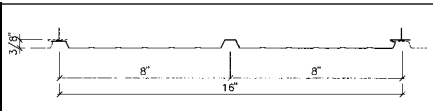
**Kaycan™** ALUMINUM SOFFIT, both vented and solid, comes in a variety of sizes, colors and configurations.



Solid Panel 16"

**Order# 0600**

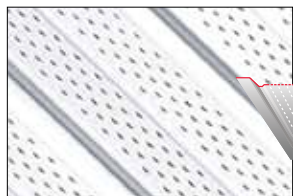
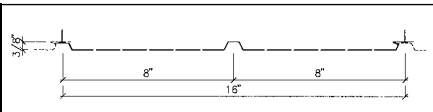
192 sq. ft.  
12 panels  
12' length



Deluxe Vented Panel 16"

**Order# 0610**

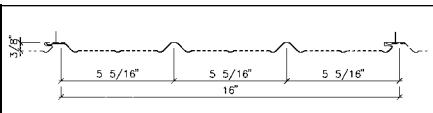
192 sq. ft.  
12 panels  
12' length



SP-600 16" Vented

**Order# 0605**

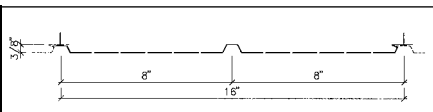
192 sq. ft.  
12 panels  
12' length



SP-100 16" Vented

**Order# 0613**

192 sq. ft.  
12 panels  
12' length



Your **Kaycan™** aluminum fascia, soffit and rainware is protected against peeling, flaking, blistering, denting; is stain resistant and never needs repainting.



**Kaycan™** offers a wide selection of exterior home building products with the same built-in beauty and protection as their aluminum Fascia, Soffit and Rainware: Vinyl Siding, **Kaytec™** Windows, Shutters, Gable Vents and Mounting Blocks.



**Important:** Colors shown may differ slightly due to printing techniques. Please refer to actual color chips for accurate color representation.

**KAYCAN**

[www.kaycan.com](http://www.kaycan.com)

1-800-952-9226



ASFREng-10A ©2010 Kaycan

# Aluminum Soffit Fascia and Rainware



**KAYCAN**

BUILDING LASTING IMPRESSIONS

# ALUMINUM SOFFIT, FASCIA AND RAINWARE

## Kaycan™ building quality and strength into your home.

**Kaycan™** provides you with quality aluminum and vinyl siding products, in styles, colors and trims designed to suit your personal taste and building needs. Building on over 30 years of experience, the **Kaycan™** name is synonymous with excellence. All of our products are backed by a limited lifetime warranty, and can be found in locations across Canada and the United States. Whatever your home improvement needs, you can count on the quality reputation that comes with **Kaycan™**.

## Create a beautifully enduring home finish and make time-consuming painting and maintenance, a thing of the past!

You want to preserve the beauty and value of your home. Regular maintenance can be time-consuming and costly, but **Kaycan™** products are designed to help you add long-lasting beauty and protection to your home exterior. Every angle is covered for you - even areas like the under-eaves of your roofline. Upgrading with **Kaycan™** soffit, fascia and rainware is a smart way for you to build more strength and style into your home. Made from solid aluminum, it can't split, warp or rot like wood can. Also, our special heat-sealed finish won't blister, flake or peel, eliminating the tiresome task of repainting. Best of all; replace your soffit, fascia and rainware with our guaranteed **Kaycan™** aluminum just once! That's all you'll ever need to do for the life of your home. **Kaycan™** helps you spend less time maintaining and repairing your home and more time enjoying it!

## A Renaissance in Home Improvement.

Our wide variety of styles and colors allows you to create the look that is exactly right for you. No matter which style you prefer, you can rest assured that **Kaycan™** aluminum soffit, fascia and rainware is as durable as it is beautiful. Inspired by the time-honored, quality craftsmanship used to create wooden tongue and groove soffit, our precise-angle profile adds extra rigidity to ensure top-of-line climate resistance and a perfect fit. Tradition and technology are fused in beauty to create revolutionary style and strength.



Table 1

Property	Value
Thickness [mm]	9.5
Modulus of Rapture	
parallel [MPa]	30.6
perpend. [MPa]	32.3
Water Absorbtion [%]	11.4
Thickness swell [%]	5.6
Density [kg/m <sup>3</sup> ]	676
Linear Expansion, 90%RH [%]	0.26
Impact [mm]	582
Hardness [N]	4732
Nail-head Pull Resistance [N]	1137
Lateral Nail Resistance [N]	1323
Accelerated Aging	
Residual MOR [%]	17

## 5. Codes, Standards, Evaluations

The engineered wood Siding conforms with:

- CAN/CGSB-11.5-M87
- ANSI A135.6-2006