

METRIC: DISTANCES SHOWN ON THIS PLAN ARE IN METRES AND CAN BE CONVERTED TO FEET BY DIVIDING BY 0.3048.

AREA OF BLOCKS	
BLOCK No.	AREA (m ²)
54	2094.6
55	157.8
56	482.9

CURVE TABLE			
NUM	ARC	RADIUS	BEARING
C1	7.870	7.250	N45°10'30"W
C2	19.678	50.000	N22°42'20"E
C3	10.666	7.250	N3°32'0"W
C4	12.8	7.250	N86°27'45"E
C5	9.87	5.000	N40°35'E
C6	28.447	50.000	N6°58'55"W
C7	28.607	50.300	N6°58'55"W
C8	3.373	18.500	N40°27'10"W
C9	2.234	18.500	N16°18'30"W
C10	4.489	18.500	N9°32'29"E
C11	5.965	107.000	N6°09'00"E
C12	4.232	107.000	N6°41'58"E
C13	9.288	5.000	N20°14'0"W
C14	22.787	40.000	N6°58'55"W

ATTACHMENT 2

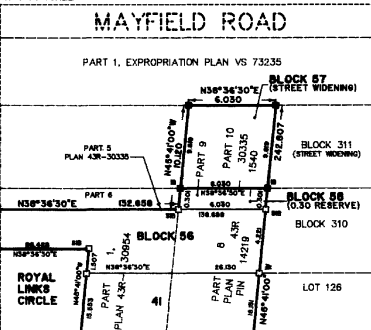
PLAN 43M-1765

I CERTIFY THAT THIS PLAN IS REGISTERED IN THE LAND REGISTRY OFFICE FOR THE LAND TITLES DIVISION OF PEEL No. 43 AT 10:02 O'CLOCK ON THE 27 DAY OF February, 2008 AND ENTERED IN THE PARCEL REGISTER FOR PROPERTY IDENTIFIER NO. 19219-1537, 1538, 1540, 1603 AND THE REQUIRED CONSENTS ARE REGISTERED AS PLAN DOCUMENT NO. 981430755

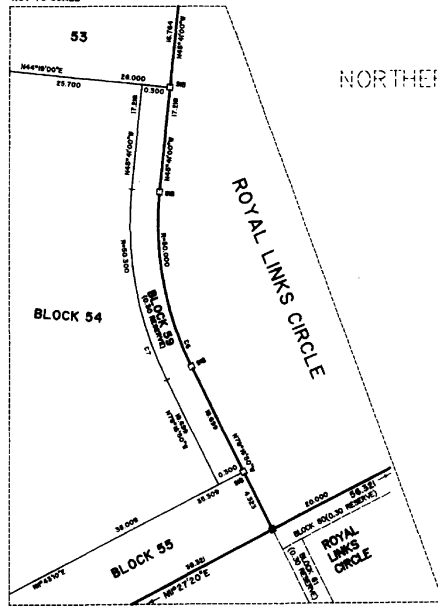
L. Lalor
Asst. Dep. Land Registrar

THIS PLAN COMPRISES ALL OF PINS 14219-1537, 14219-1538, 14219-1540 AND 14219-1603.

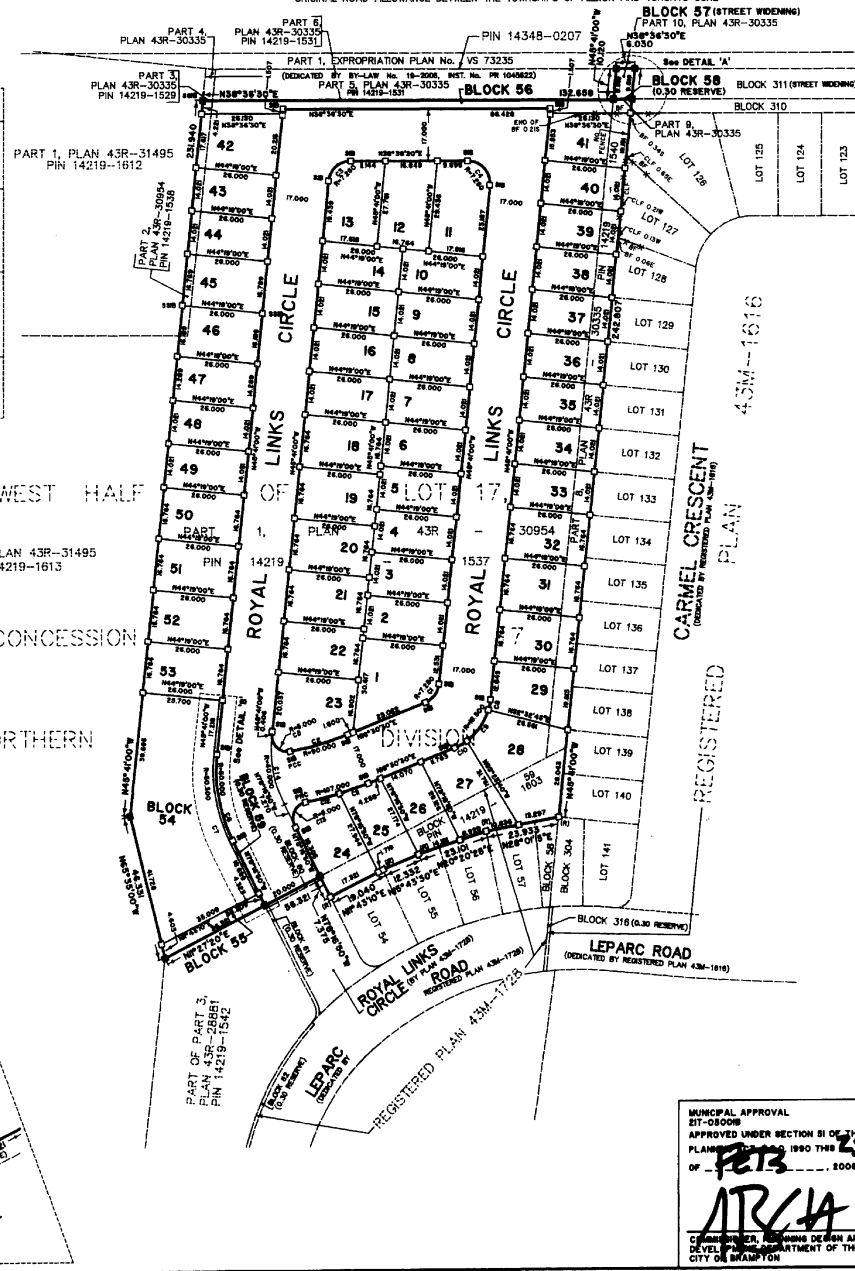
DETAIL 'A'
NOT TO SCALE



DETAIL 'B'
NOT TO SCALE



KNOWN AS MAYFIELD ROAD (REGIONAL ROAD No. 14)
ORIGINAL ROAD ALLOWANCE BETWEEN THE TOWNSHIPS OF ALBION AND TORONTO GORE



PLAN OF SUBDIVISION OF
BLOCK 59
REGISTERED PLAN 43M-1728 AND
PART OF THE WEST HALF OF
LOT 17, CONCESSION 7,
NORTHERN DIVISION
(GEOGRAPHIC TOWNSHIP OF TORONTO GORE)
NOW IN THE
CITY OF BRAMPTON
REGIONAL MUNICIPALITY OF PEEL
SCALE 1:6000

SCHAEFFER & DZALDOV LIMITED

NOTES

- DENOTES PLANTED STANDARD IRON BAR
 - PLANTED IRON BAR
 - FOUND MONUMENT
 - STANDARD IRON BAR
 - SHORT STANDARD IRON BAR
 - IRON BAR
 - MEASURED
 - SCHAEFFER & DZALDOV LIMITED, O.L.R.
 - NORTHERN DIVISION
 - POINT OF REVERSE CURVE
 - POINT OF COMPOUND CURVE
 - FOUND W. (922), REPLACED WITH SSB
 - CHAIN LINK FENCE
 - BOARD FENCE
- ALL FOUND MONUMENTS ARE SSB'S UNLESS NOTED OTHERWISE.
ALL FOUND MONUMENTS ARE NUMBERED SEE UNLESS NOTED OTHERWISE.
NOTE: 0.30 RESERVES HAVE BEEN EXEMPERATED FOR CLARITY.
- BEARINGS SHOWN HEREON ARE GRID BEARINGS DERIVED FROM THE
4th UTM COORDINATE SYSTEM HAD 83, ZONE 17, CENTRAL MERIDIAN 8th WEST
LONGITUDE USING HORIZONTAL CONTROL MONUMENTS HAVING PUBLISHED
VALUES AS FOLLOWS:
- HCM 042820178 NORTHING 4849648.346, EASTING 501255.440
HCM 042820178 NORTHING 4850461.182, EASTING 500645.922.
- DISTANCES SHOWN ON THIS PLAN ARE GROUND DISTANCES.
TOTAL AREA OF SUBDIVISION = 3.4800 ha.

OWNER'S CERTIFICATE

- THIS IS TO CERTIFY THAT:
- LOTS 1 TO 53, BOTH INCLUSIVE, BLOCKS 54, 55 AND 56, THE STREET, NAMELY ROYAL LINKS CIRCLE, STREET WIDENING, NAMELY BLOCK 57 AND 0.30 RESERVES, NAMELY BLOCKS 58 AND 59, HAVE BEEN LAID OUT IN ACCORDANCE WITH OUR INSTRUCTIONS.
 - THE STREET IS HEREBY DEDICATED TO THE CORPORATION OF THE CITY OF BRAMPTON AS A PUBLIC HIGHWAY.
 - THE STREET WIDENING IS HEREBY DEDICATED TO THE REGIONAL MUNICIPALITY OF PEEL AS A PUBLIC HIGHWAY.

DATED THE 27th DAY OF OCTOBER, 2007.

CARLINDS DEVELOPMENT CORPORATION

David Brand
DAVID BRAND - A.R.O.
I HAVE THE AUTHORITY TO BIND THE CORPORATION

SURVEYOR'S CERTIFICATE

- I CERTIFY THAT:
- THIS SURVEY AND PLAN ARE CORRECT AND IN ACCORDANCE WITH THE SURVEYS ACT, THE SURVEYORS ACT, THE LAND TITLES ACT AND THE REGULATIONS MADE UNDER THEM.
 - THE SURVEY WAS COMPLETED ON THE 27th DAY OF OCTOBER, 2007.

DATE OCTOBER 19, 2007.

David Brand
DAVID BRAND - A.R.O.
I HAVE THE AUTHORITY TO BIND THE CORPORATION

MUNICIPAL APPROVAL
27-08-08
APPROVED UNDER SECTION 51 OF THE
PLANNING ACT, 1990 THIS 25th DAY
OF OCTOBER, 2008.
ARCA
CHIEF ENGINEER, PLANNING DESIGN AND
DEVELOPMENT DEPARTMENT OF THE
CITY OF BRAMPTON

SCHAEFFER & DZALDOV LIMITED
ONTARIO LAND SURVEYORS
64 JARDIN DRIVE CONCORD, ONTARIO L4K 3P3 TEL (416) 987-0101
DRAWN: ACAD/LW CHECKED: WMF SCALE 1:6000 JOB NO. 02-108-06-030
PHASE 2