

I CERTIFY THAT THIS PLAN IS REGISTERED IN THE LAND REGISTRY OFFICE FOR THE LAND TILES DIVISION OF THE REGISTRY OFFICE ON THE 12th DAY OF JULY 2012 AND ENTERED IN THE PARCEL REGISTER FOR PROPERTY IDENTIFIED BY THE CITY OF BRAMPTON, ONTARIO AS PLAN DOCUMENT No. 211-090108

THIS PLAN COMPRISES ALL OF PINS 14229-0016, 14229-0019, 14229-0020, 14229-0021, 14229-0022, 14229-0023 AND 14229-0024. SUBJECT TO EASEMENTS AS SHOWN PREVIOUSLY (APERTS ALL OF BLOCKS 1 TO 30 AND 32 TO 35 AND 37 TO 40, ALL RESERVES ON THE STREET WORKING BLOCKS 28 TO 30 AND 32 TO 35, ALL RESERVES ON THE STREET WORKING BLOCKS 36 TO 38 AND 40, ALL RESERVES ON THE STREET WORKING BLOCKS 39 AND 41, ALL RESERVES ON THE STREET WORKING BLOCKS 42 AND 43, ALL RESERVES ON THE STREET WORKING BLOCKS 44 AND 45, ALL RESERVES ON THE STREET WORKING BLOCKS 46 AND 47 AND ALL RESERVES ON THE STREET WORKING BLOCKS 48 AND 49 AND PART OF INSPIRE BOULEVARD.

PLAN OF SUBDIVISION OF PART OF LOTS 16 AND 17 CONCESSION 3 EAST OF HURONTARIO STREET (GEOGRAPHIC TOWNSHIP OF CHINGUICAOUSY) CITY OF BRAMPTON REGIONAL MUNICIPALITY OF PEEL

SCALE 1:5000

- NOTES
1. BENEFITS SURVEY MONUMENT FOUND
2. BENEFITS STANDARD BORN BARS
3. BENEFITS BORN CHAINING PINS BORN BARS
4. BENEFITS BORN BARS
5. BENEFITS BORN CHAINS
6. BENEFITS BORN BARS
7. BENEFITS BORN CHAINS
8. BENEFITS BORN BARS
9. BENEFITS BORN CHAINS
10. BENEFITS BORN BARS
11. BENEFITS BORN CHAINS
12. BENEFITS BORN BARS
13. BENEFITS BORN CHAINS
14. BENEFITS BORN BARS
15. BENEFITS BORN CHAINS
16. BENEFITS BORN BARS
17. BENEFITS BORN CHAINS
18. BENEFITS BORN BARS
19. BENEFITS BORN CHAINS
20. BENEFITS BORN BARS
21. BENEFITS BORN CHAINS
22. BENEFITS BORN BARS
23. BENEFITS BORN CHAINS
24. BENEFITS BORN BARS
25. BENEFITS BORN CHAINS
26. BENEFITS BORN BARS
27. BENEFITS BORN CHAINS
28. BENEFITS BORN BARS
29. BENEFITS BORN CHAINS
30. BENEFITS BORN BARS

BEARINGS AND CO-ORDINATE VALUES
Table with columns: POINT TO, EASTING, NORTHING, CO-ORDINATE VALUES. Includes points 1 to 10 and their respective coordinates.

OWNER'S CERTIFICATE
THIS IS TO CERTIFY THAT:
1. ALL OF BLOCKS 1 TO 30 INCLUSIVE, 31 TO 35 INCLUSIVE AND 36 TO 40 INCLUSIVE, NAMELY DOCKSTEADER ROAD AND PART OF THE STREET WORKING NAMELY BLOCKS 40 AND 41 AND PART OF THE STREET WORKING NAMELY BLOCKS 42 AND 43 AND PART OF BLOCKS 2, 3, 4, 5, 6, 7, 8, 9, 10, 11, 12, 13, 14, 15, 16, 17, 18, 19, 20, 21, 22, 23, 24, 25, 26, 27, 28, 29, 30, 31, 32, 33, 34, 35, 36, 37, 38, 39, 40, 41, 42, 43, 44, 45, 46, 47, 48, 49 AND PART OF INSPIRE BOULEVARD, HAVE BEEN Laid OUT IN ACCORDANCE WITH OUR INSTRUCTIONS.

GARDEN MANOR CONSTRUCTION INC.
OCTOBER 12, 2012
DATE
I HAVE THE AUTHORITY TO SIGN THE CORPORATION.

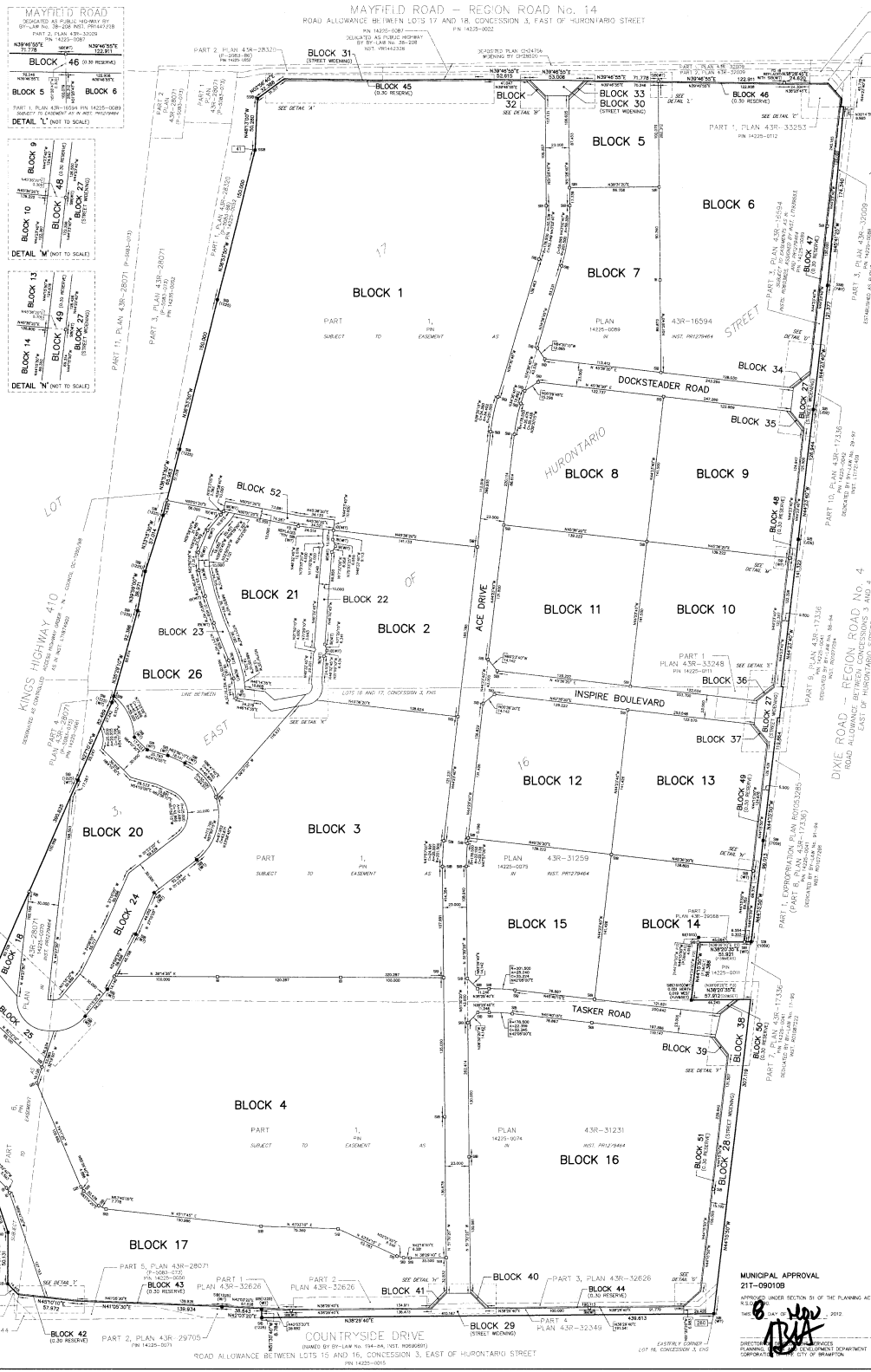
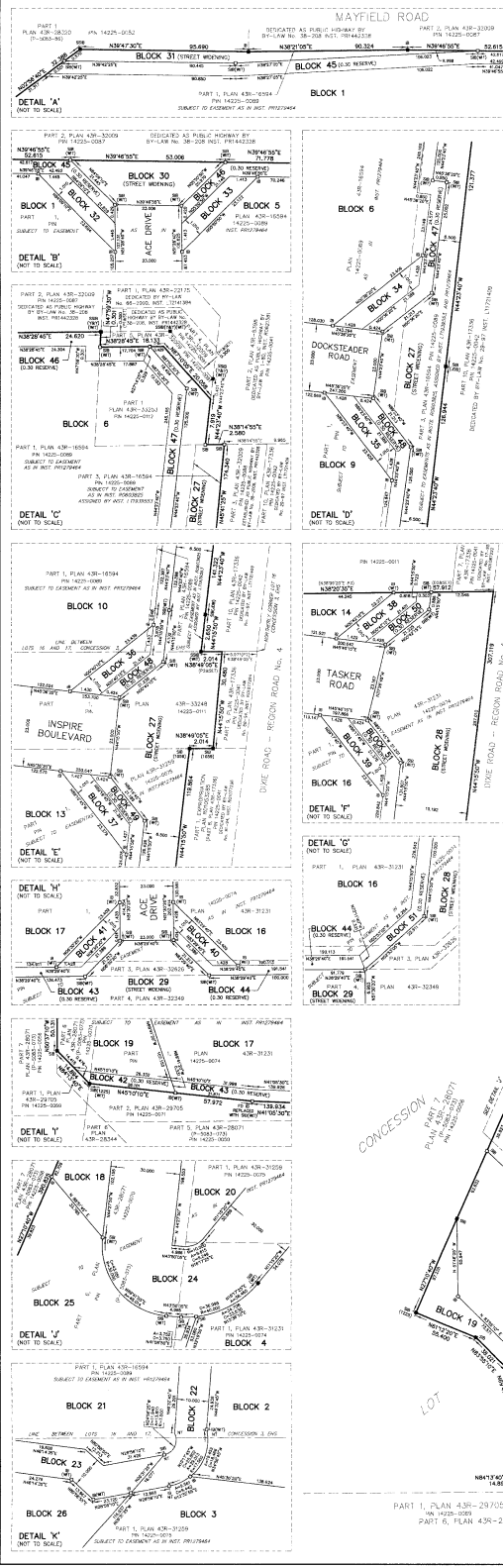
SANDRINGHAM PLACE INC.
OCTOBER 12, 2012
DATE
I HAVE THE AUTHORITY TO SIGN THE CORPORATION.

WOLVERLEIGH CONSTRUCTION LTD.
OCTOBER 12, 2012
DATE
I HAVE THE AUTHORITY TO SIGN THE CORPORATION.

655339 ONTARIO LIMITED
OCTOBER 12, 2012
DATE
I HAVE THE AUTHORITY TO SIGN THE CORPORATION.

SURVEYOR'S CERTIFICATE
I CERTIFY THAT:
1. THIS SURVEY AND PLAN ARE CORRECT AND IN ACCORDANCE WITH THE REGULATIONS MADE UNDER THE ACT AND THE REGULATIONS MADE UNDER THE ACT.
2. THE SURVEY WAS COMPLETED ON OCTOBER 12, 2012.

MUNICIPAL APPROVAL 211-090108
HOLDING JONES VANDERVEEN INC.
ONTARIO LAND SURVEYORS
PHONE: 905-850-4000 / 416-610-1000
WEBSITE: WWW.HJVSURV.COM



PLAN 43M-1907
I CERTIFY THAT THIS PLAN IS REGISTERED IN THE LAND REGISTRY OFFICE FOR THE LAND TILES DIVISION OF THE REGISTRY OFFICE ON THE 12th DAY OF JULY 2012 AND ENTERED IN THE PARCEL REGISTER FOR PROPERTY IDENTIFIED BY THE CITY OF BRAMPTON, ONTARIO AS PLAN DOCUMENT No. 211-090108
THIS PLAN COMPRISES ALL OF PINS 14229-0016, 14229-0019, 14229-0020, 14229-0021, 14229-0022, 14229-0023 AND 14229-0024. SUBJECT TO EASEMENTS AS SHOWN PREVIOUSLY (APERTS ALL OF BLOCKS 1 TO 30 AND 32 TO 35 AND 37 TO 40, ALL RESERVES ON THE STREET WORKING BLOCKS 28 TO 30 AND 32 TO 35, ALL RESERVES ON THE STREET WORKING BLOCKS 36 TO 38 AND 40, ALL RESERVES ON THE STREET WORKING BLOCKS 39 AND 41, ALL RESERVES ON THE STREET WORKING BLOCKS 42 AND 43, ALL RESERVES ON THE STREET WORKING BLOCKS 44 AND 45, ALL RESERVES ON THE STREET WORKING BLOCKS 46 AND 47 AND ALL RESERVES ON THE STREET WORKING BLOCKS 48 AND 49 AND PART OF INSPIRE BOULEVARD.
PLAN OF SUBDIVISION OF PART OF LOTS 16 AND 17 CONCESSION 3 EAST OF HURONTARIO STREET (GEOGRAPHIC TOWNSHIP OF CHINGUICAOUSY) CITY OF BRAMPTON REGIONAL MUNICIPALITY OF PEEL
SCALE 1:5000
NOTES
1. BENEFITS SURVEY MONUMENT FOUND
2. BENEFITS STANDARD BORN BARS
3. BENEFITS BORN CHAINING PINS BORN BARS
4. BENEFITS BORN BARS
5. BENEFITS BORN CHAINS
6. BENEFITS BORN BARS
7. BENEFITS BORN CHAINS
8. BENEFITS BORN BARS
9. BENEFITS BORN CHAINS
10. BENEFITS BORN BARS
11. BENEFITS BORN CHAINS
12. BENEFITS BORN BARS
13. BENEFITS BORN CHAINS
14. BENEFITS BORN BARS
15. BENEFITS BORN CHAINS
16. BENEFITS BORN BARS
17. BENEFITS BORN CHAINS
18. BENEFITS BORN BARS
19. BENEFITS BORN CHAINS
20. BENEFITS BORN BARS
21. BENEFITS BORN CHAINS
22. BENEFITS BORN BARS
23. BENEFITS BORN CHAINS
24. BENEFITS BORN BARS
25. BENEFITS BORN CHAINS
26. BENEFITS BORN BARS
27. BENEFITS BORN CHAINS
28. BENEFITS BORN BARS
29. BENEFITS BORN CHAINS
30. BENEFITS BORN BARS
BEARINGS AND CO-ORDINATE VALUES
CO-ORDINATE VALUES CANNOT BE RECALCULATED
DISTANCES AND CO-ORDINATES SHOWN ON THIS PLAN ARE IN METRES AND CAN BE CONVERTED TO FEET BY DIVIDING BY 0.3048
OWNER'S CERTIFICATE
THIS IS TO CERTIFY THAT:
1. ALL OF BLOCKS 1 TO 30 INCLUSIVE, 31 TO 35 INCLUSIVE AND 36 TO 40 INCLUSIVE, NAMELY DOCKSTEADER ROAD AND PART OF THE STREET WORKING NAMELY BLOCKS 40 AND 41 AND PART OF THE STREET WORKING NAMELY BLOCKS 42 AND 43 AND PART OF BLOCKS 2, 3, 4, 5, 6, 7, 8, 9, 10, 11, 12, 13, 14, 15, 16, 17, 18, 19, 20, 21, 22, 23, 24, 25, 26, 27, 28, 29, 30, 31, 32, 33, 34, 35, 36, 37, 38, 39, 40, 41, 42, 43, 44, 45, 46, 47, 48, 49 AND PART OF INSPIRE BOULEVARD, HAVE BEEN Laid OUT IN ACCORDANCE WITH OUR INSTRUCTIONS.
2. THE STREETS ARE HEREBY DEDICATED TO THE CORPORATION OF THE REGIONAL MUNICIPALITY OF PEEL AS PUBLIC HIGHWAYS.
3. THE STREET WORKING NAMELY BLOCKS 28 TO 30 AND 32 TO 35 ARE HEREBY DEDICATED TO THE CORPORATION OF THE REGIONAL MUNICIPALITY OF PEEL AS PUBLIC HIGHWAYS.
4. THE STREET WORKING NAMELY BLOCKS 36 TO 38 AND 40 ARE HEREBY DEDICATED TO THE CORPORATION OF THE REGIONAL MUNICIPALITY OF PEEL AS PUBLIC HIGHWAYS.
GARDEN MANOR CONSTRUCTION INC.
OCTOBER 12, 2012
DATE
I HAVE THE AUTHORITY TO SIGN THE CORPORATION.
OWNER'S CERTIFICATE
THIS IS TO CERTIFY THAT:
1. ALL OF BLOCKS 1 TO 15 INCLUSIVE, 16 TO 20 INCLUSIVE AND 21 TO 30 INCLUSIVE, NAMELY DOCKSTEADER ROAD AND PART OF THE STREET WORKING NAMELY BLOCKS 40 AND 41 AND PART OF THE STREET WORKING NAMELY BLOCKS 42 AND 43 AND PART OF BLOCKS 2, 3, 4, 5, 6, 7, 8, 9, 10, 11, 12, 13, 14, 15, 16, 17, 18, 19, 20, 21, 22, 23, 24, 25, 26, 27, 28, 29, 30, 31, 32, 33, 34, 35, 36, 37, 38, 39, 40, 41, 42, 43, 44, 45, 46, 47, 48, 49 AND PART OF INSPIRE BOULEVARD, HAVE BEEN Laid OUT IN ACCORDANCE WITH OUR INSTRUCTIONS.
2. THE STREETS ARE HEREBY DEDICATED TO THE CORPORATION OF THE REGIONAL MUNICIPALITY OF PEEL AS PUBLIC HIGHWAYS.
3. THE STREET WORKING NAMELY BLOCKS 28 TO 30 AND 32 TO 35 ARE HEREBY DEDICATED TO THE CORPORATION OF THE REGIONAL MUNICIPALITY OF PEEL AS PUBLIC HIGHWAYS.
4. THE STREET WORKING NAMELY BLOCKS 36 TO 38 AND 40 ARE HEREBY DEDICATED TO THE CORPORATION OF THE REGIONAL MUNICIPALITY OF PEEL AS PUBLIC HIGHWAYS.
SANDRINGHAM PLACE INC.
OCTOBER 12, 2012
DATE
I HAVE THE AUTHORITY TO SIGN THE CORPORATION.
OWNER'S CERTIFICATE
THIS IS TO CERTIFY THAT:
1. ALL OF BLOCKS 1 TO 15 INCLUSIVE, 16 TO 20 INCLUSIVE AND 21 TO 30 INCLUSIVE, NAMELY DOCKSTEADER ROAD AND PART OF THE STREET WORKING NAMELY BLOCKS 40 AND 41 AND PART OF THE STREET WORKING NAMELY BLOCKS 42 AND 43 AND PART OF BLOCKS 2, 3, 4, 5, 6, 7, 8, 9, 10, 11, 12, 13, 14, 15, 16, 17, 18, 19, 20, 21, 22, 23, 24, 25, 26, 27, 28, 29, 30, 31, 32, 33, 34, 35, 36, 37, 38, 39, 40, 41, 42, 43, 44, 45, 46, 47, 48, 49 AND PART OF INSPIRE BOULEVARD, HAVE BEEN Laid OUT IN ACCORDANCE WITH OUR INSTRUCTIONS.
2. THE STREETS ARE HEREBY DEDICATED TO THE CORPORATION OF THE REGIONAL MUNICIPALITY OF PEEL AS PUBLIC HIGHWAYS.
3. THE STREET WORKING NAMELY BLOCKS 28 TO 30 AND 32 TO 35 ARE HEREBY DEDICATED TO THE CORPORATION OF THE REGIONAL MUNICIPALITY OF PEEL AS PUBLIC HIGHWAYS.
4. THE STREET WORKING NAMELY BLOCKS 36 TO 38 AND 40 ARE HEREBY DEDICATED TO THE CORPORATION OF THE REGIONAL MUNICIPALITY OF PEEL AS PUBLIC HIGHWAYS.
WOLVERLEIGH CONSTRUCTION LTD.
OCTOBER 12, 2012
DATE
I HAVE THE AUTHORITY TO SIGN THE CORPORATION.
655339 ONTARIO LIMITED
OCTOBER 12, 2012
DATE
I HAVE THE AUTHORITY TO SIGN THE CORPORATION.
SURVEYOR'S CERTIFICATE
I CERTIFY THAT:
1. THIS SURVEY AND PLAN ARE CORRECT AND IN ACCORDANCE WITH THE REGULATIONS MADE UNDER THE ACT AND THE REGULATIONS MADE UNDER THE ACT.
2. THE SURVEY WAS COMPLETED ON OCTOBER 12, 2012.
MUNICIPAL APPROVAL 211-090108
HOLDING JONES VANDERVEEN INC.
ONTARIO LAND SURVEYORS
PHONE: 905-850-4000 / 416-610-1000
WEBSITE: WWW.HJVSURV.COM