



Embleton Community Centre

Accessibility Presentation

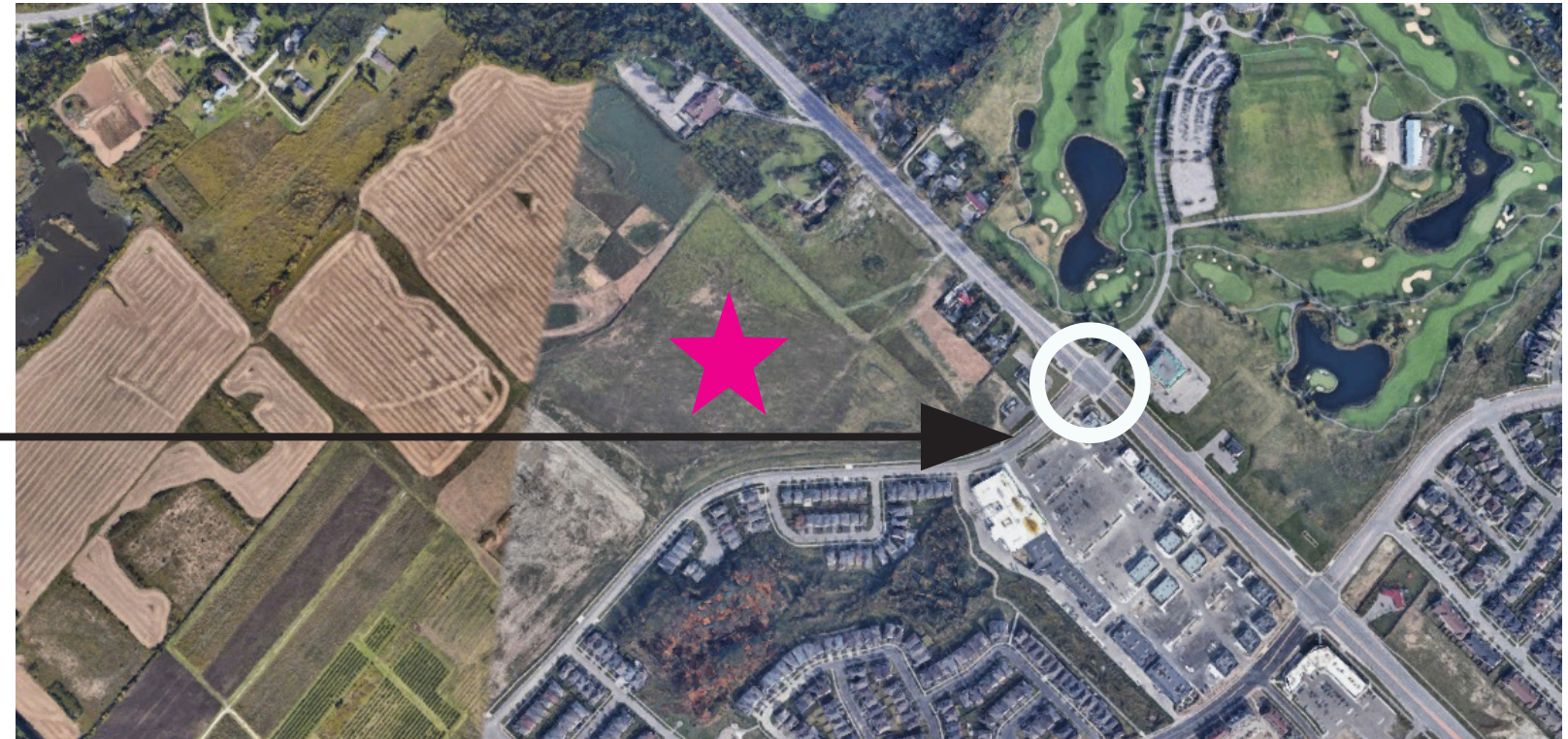
May 15, 2024

Embleton Community Centre

Location:

200 Lionhead Golf Club Road

Mississauga Road @
Loinhead Golf Club Road



Building Program:

- Triple Gymnasium
- Walking Track
- Lane Pool
- Leisure Pool
- Fitness Centre/ Studio
- Multi-Purpose Rooms
- Child Care Centre
- Administration Offices

Park Program:

- Tennis/Pickleball Courts
- Junior Soccer Field
- Skateboard Park
- Playground
- Multi-Courts
- Splash Pad
- Childcare Outdoor Area
- Gathering & Picnic Area

Embleton Community Centre

Accessibility Regulations:

- Ontario Building Code (OBC)
- Accessibility for Ontarians with Disability Act (AODA)
- City of Brampton Technical Standards for Accessibility

Design Overview - Site Plan

- ① Community Access
- ② Splash Pad
- ③ Amphitheatre
- ④ Junior Soccer Field
- ⑤ Tennis Courts
- ⑥ Pickleball Courts
- ⑦ Playground
- ⑧ Fieldhouse/ Skating
- ⑨ Basketball Court
- ⑩ Covered Entry Walkway
- ⑪ Childcare Outdoor Area
- ⑫ Outdoor Fitness
- ⑬ Skate Park
- ⑭ Community Centre & Child Care
- ⑮ Covered Entry Walkway
- ⑯ Barrier-Free Parking
- ⑰ Drop-Off Zone
- ⑱ Entry Plaza



Site Plan - Community Centre Access

Accessible routes to and through the site:

- Pedestrian access from future Misted Breeze St and Lionhead Golfclub Road to the community centre North and South Entries.
- All routes designed with adequate width and slope
 - * minimum 1100mm width clearance,
 - * max 4% running slope
 - * max 2% cross slope
- Accessible and even concrete pavement throughout
- Appropriate levels of lighting along pathways and driveways
- City Standard details for sidewalk and vehicular driveways to be implemented

Community Centre Access

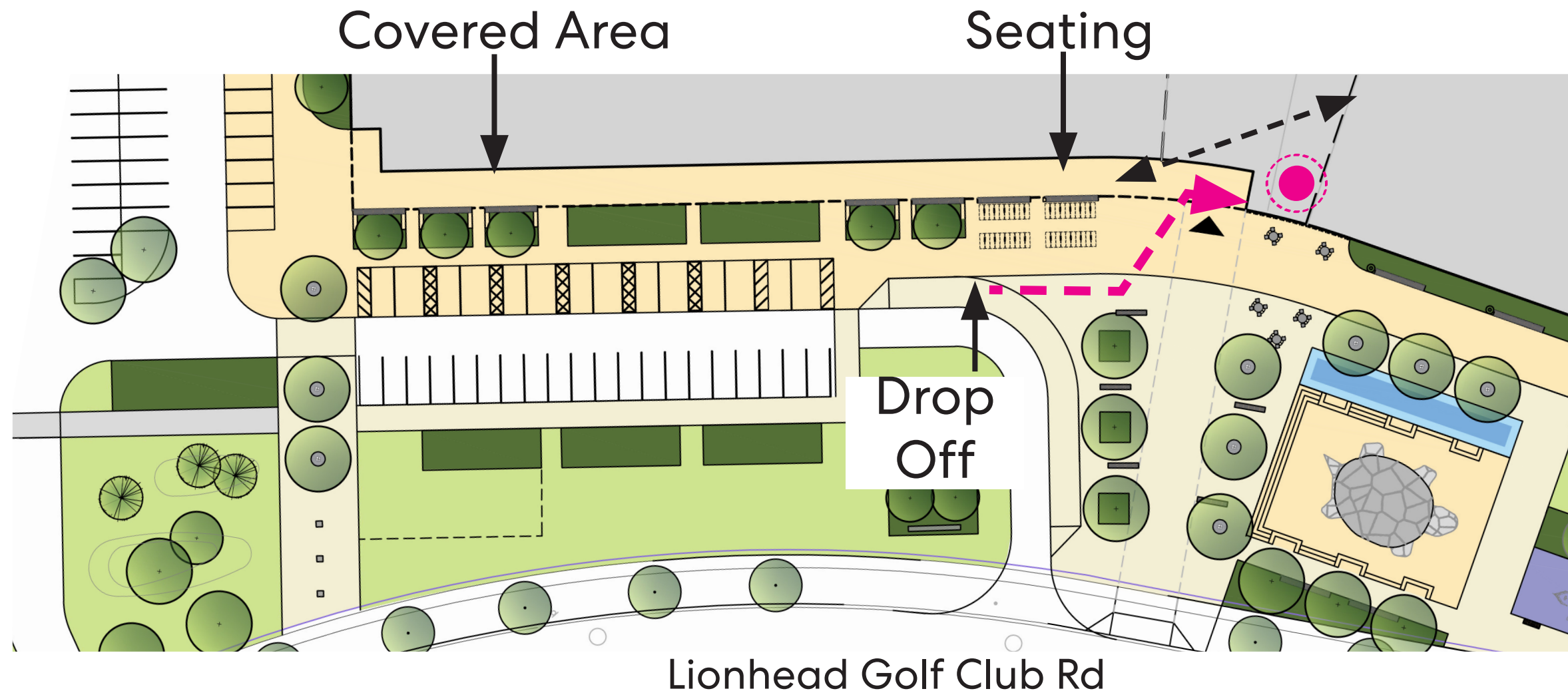


Park Accessible Routes



South Entry

- Bench seating/ rest area provided with clear views into building
- Elevator and reception desk located near South Entry, in close proximity to building's main pickup and dropoff
- Glazing provided at entry for clear views to and from dropoff from Interior



South Entry Covered Walkway

View from Southwest Corner



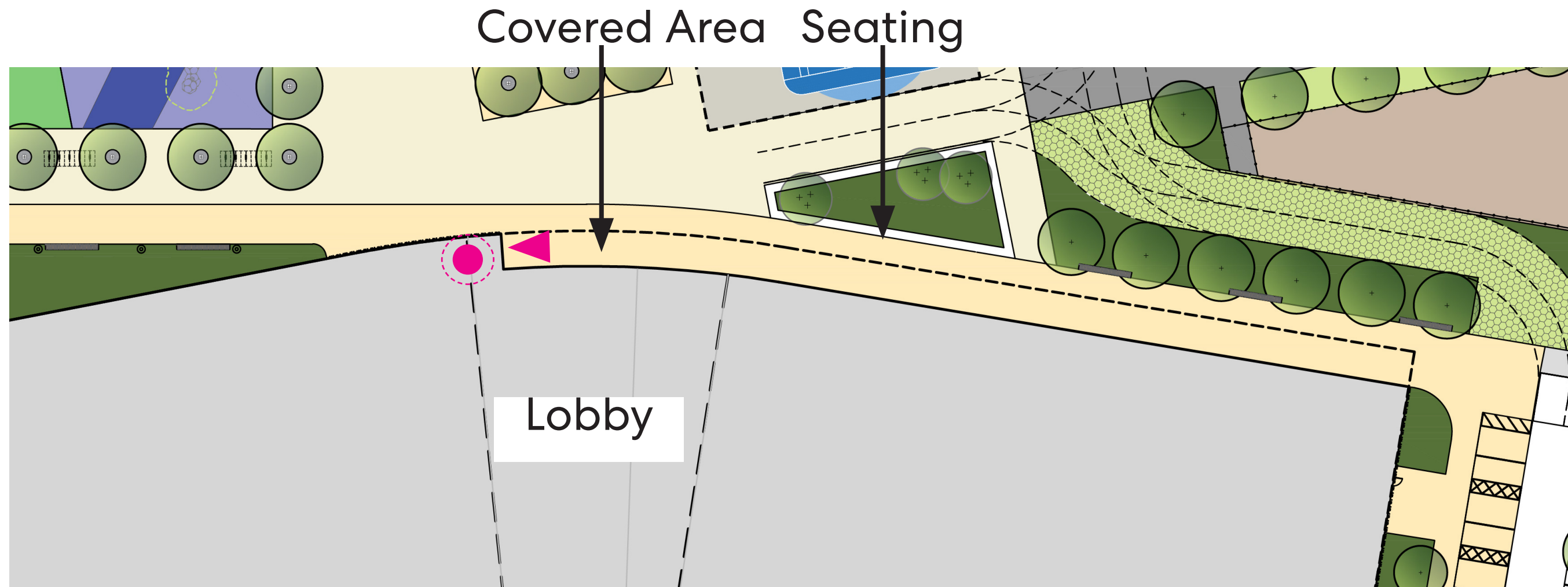
South Entry Lobby

View from Lobby towards Drop Off



North Entry:

- Bench seating/ rest area provided with clear views into building
- Glazing provided at entry for clear views to and from park plaza



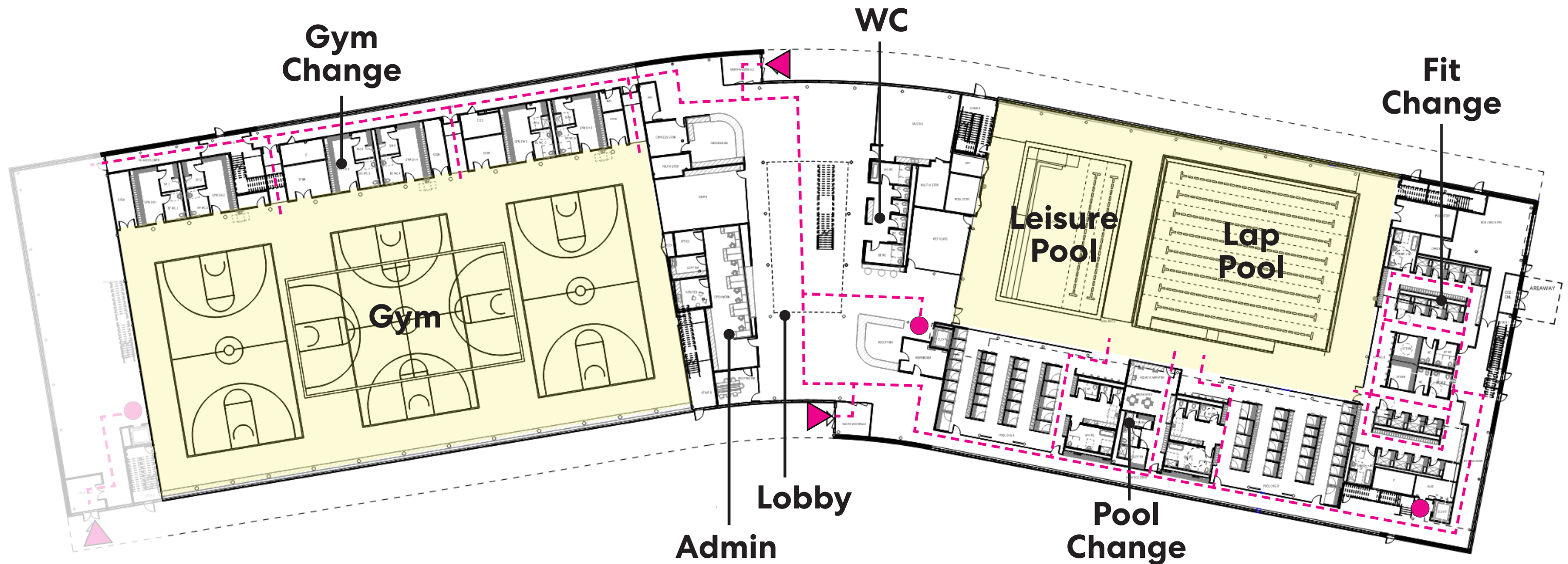
North Entry Covered Walkway

View from Northeast Corner



Ground Level of Community Centre

- All entrance doors to have power door operators
- Elevator in close proximity to entrance and adjacent to service desk
- Barrier free accessible route throughout all public areas of the building
- Service desk conforming to accessibility standards
- 1 Universal and 1 Barrier-Free WC
- Flexible lounge seating and viewing area



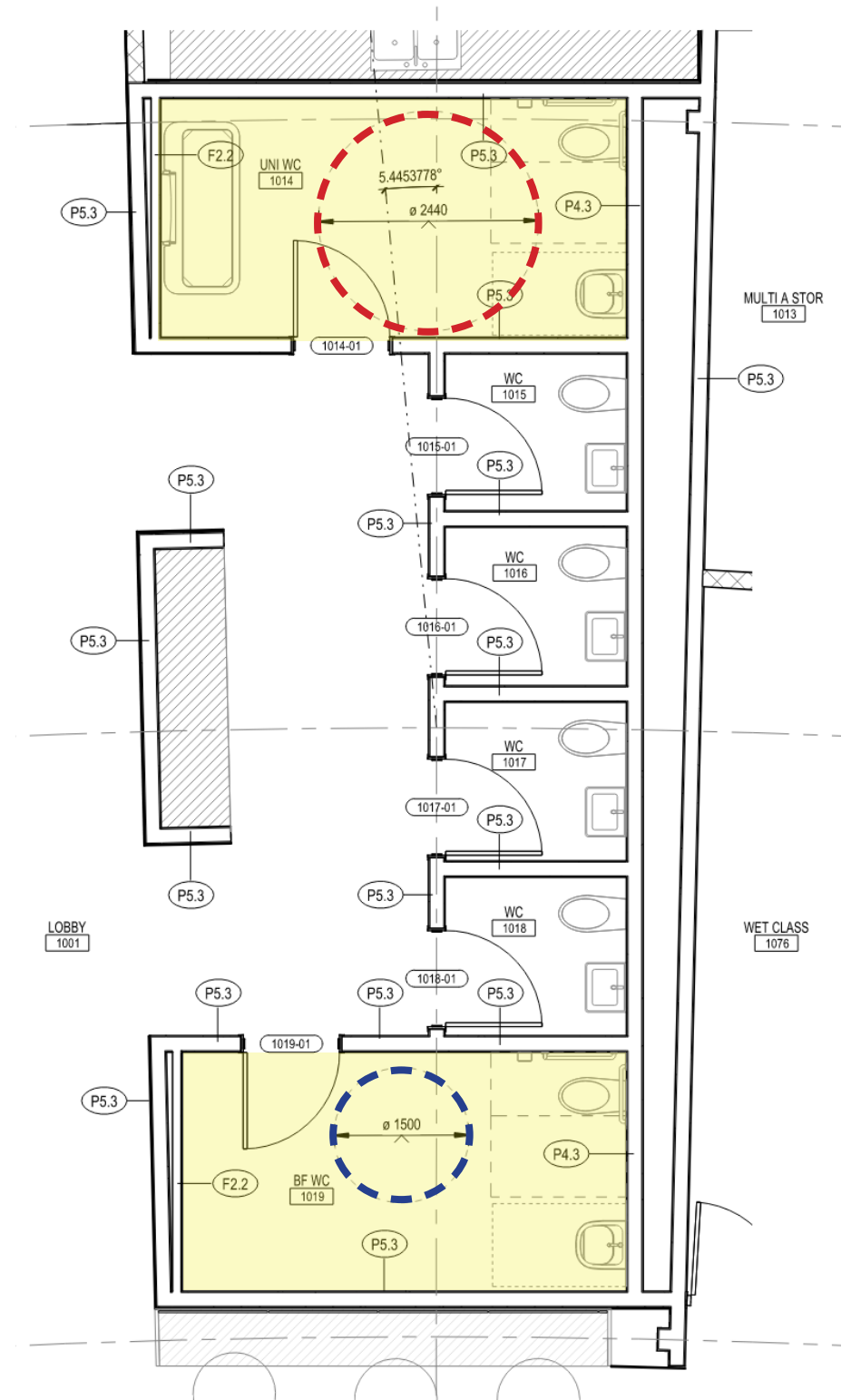
Lobby and Reception Counter Design



Washrooms

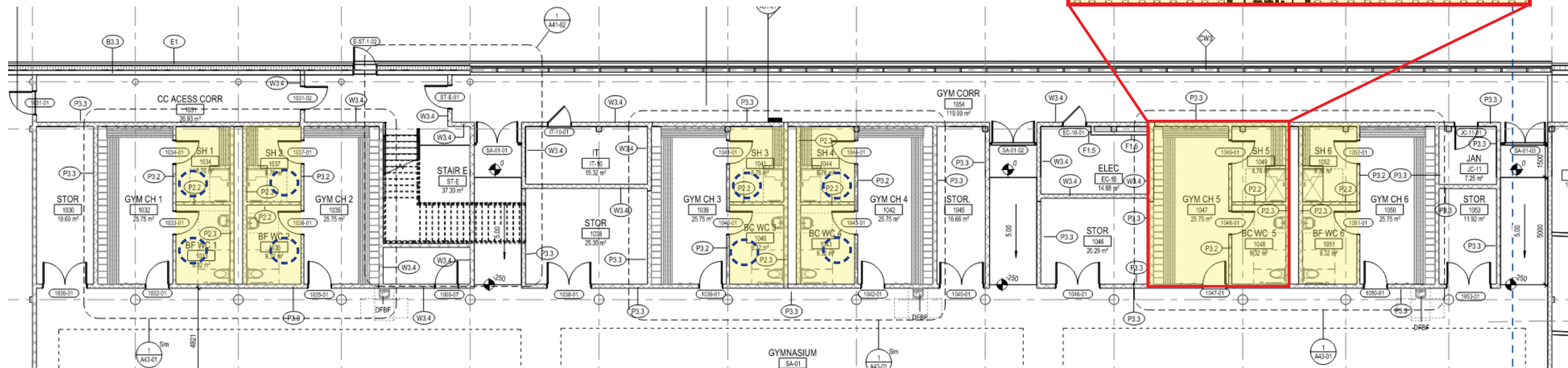
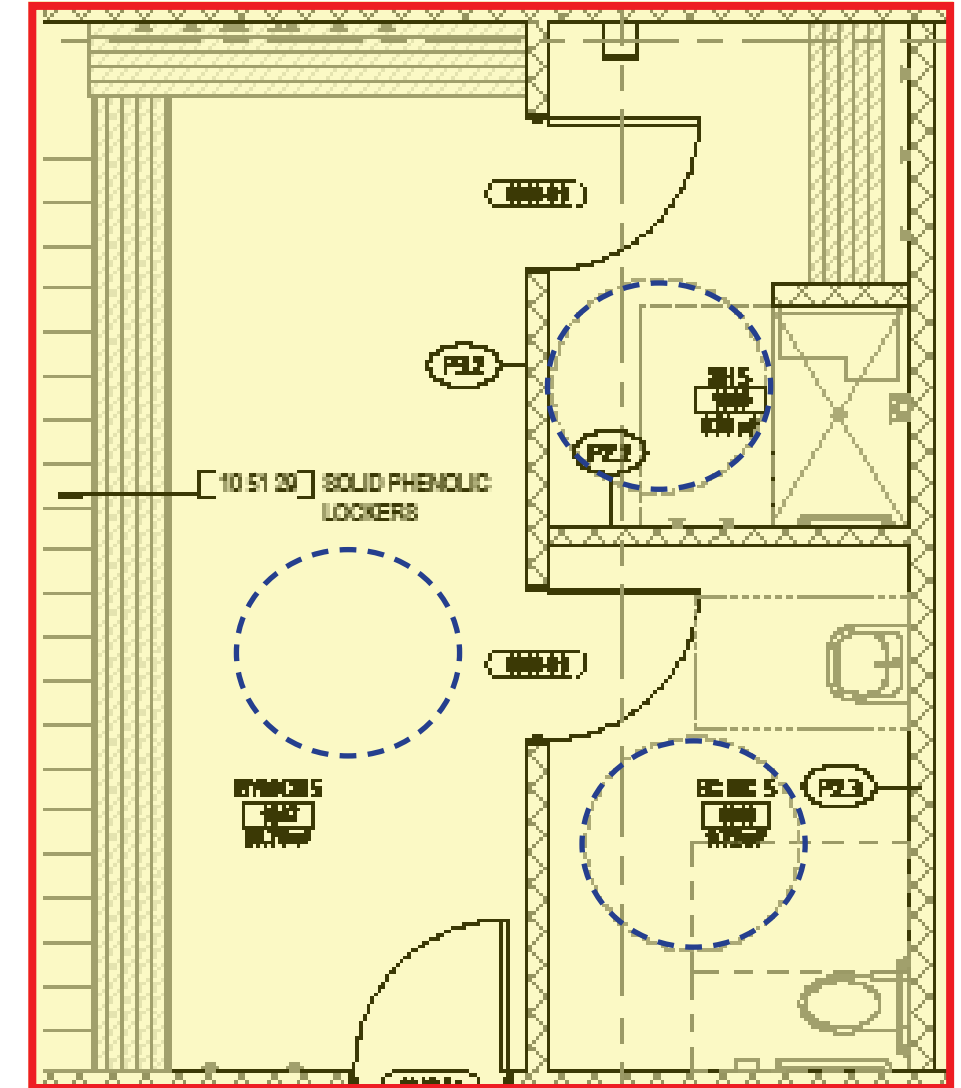
Ground Floor Lobby Washrooms:

- Universal Washroom on all levels, located along the barrier free accessible route
- All universal and barrier free washrooms equipped with power door operators
- Universal WC with 2440mm turning diameter
- Barrier Free Washroom with 1500mm turning diameter



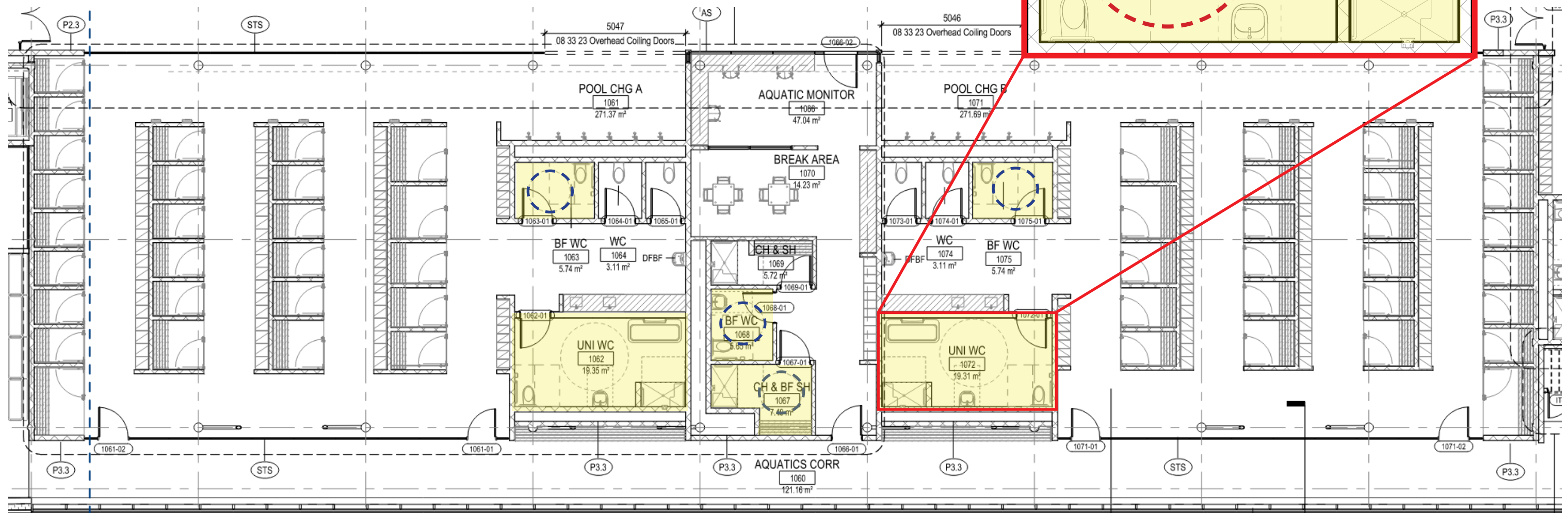
Gym Changerooms

- Power door operator at changeroom entrances
- Barrier free Washroom and shower within each changeroom (6 changerooms total), to be equipped with power door operators
- Barrier free path to and within changeroom



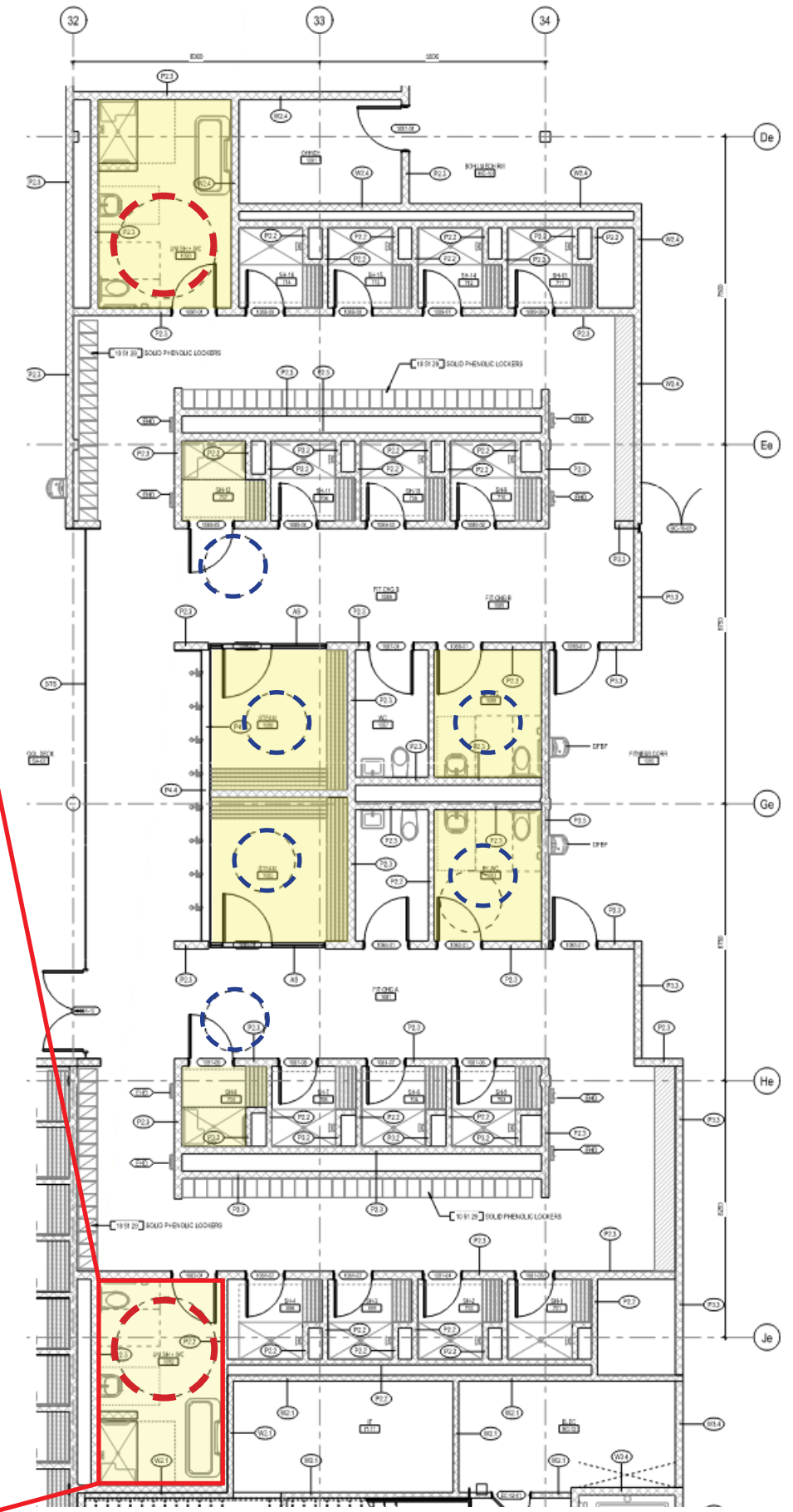
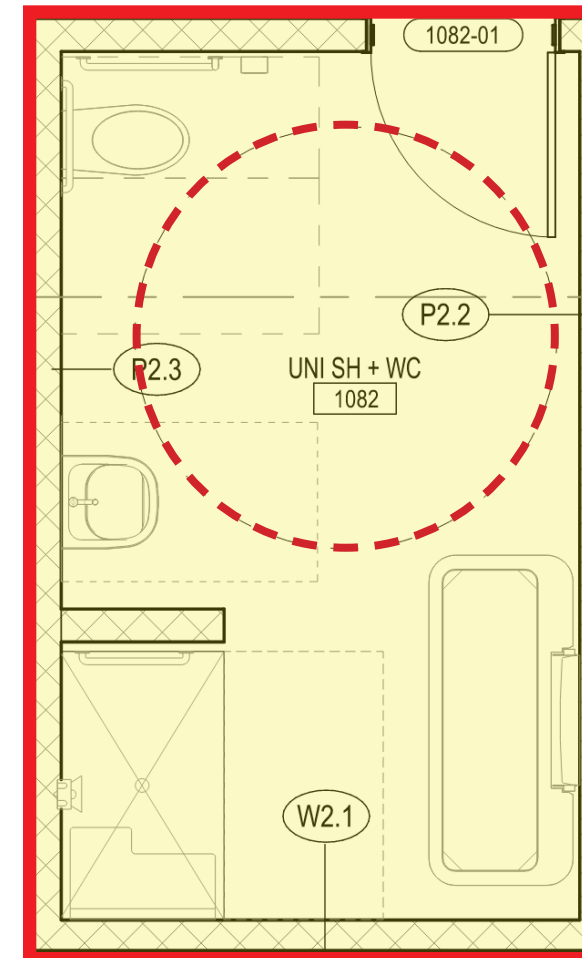
Aquatic Changerooms

- Power door operator at changeroom entrances and barrier free path throughout changeroom
- 2 Universal WC (1 per changeroom)
- 2 Barrier-Free WC (1 per changeroom)



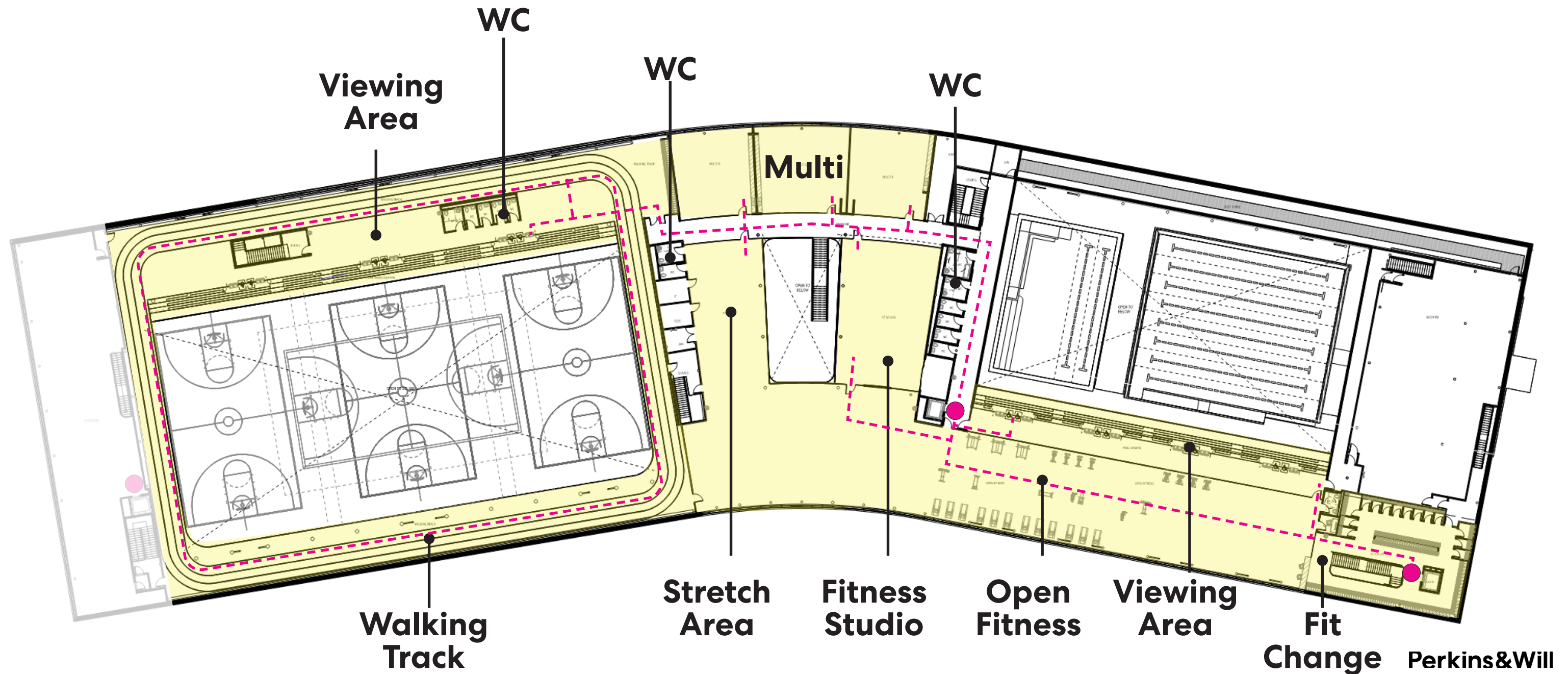
Fitness Change (Level 01)

- Power door operator at changeroom entrances and barrier free path throughout changeroom
- 2 Barrier-Free Showers (1 per changeroom)
- 2 Barrier-Free WC (1 per changeroom)
- 2 Universal WC (1 per changeroom)
- 2 Barrier-Free Steam Rooms (1 per changeroom)



Second Level of Community Centre

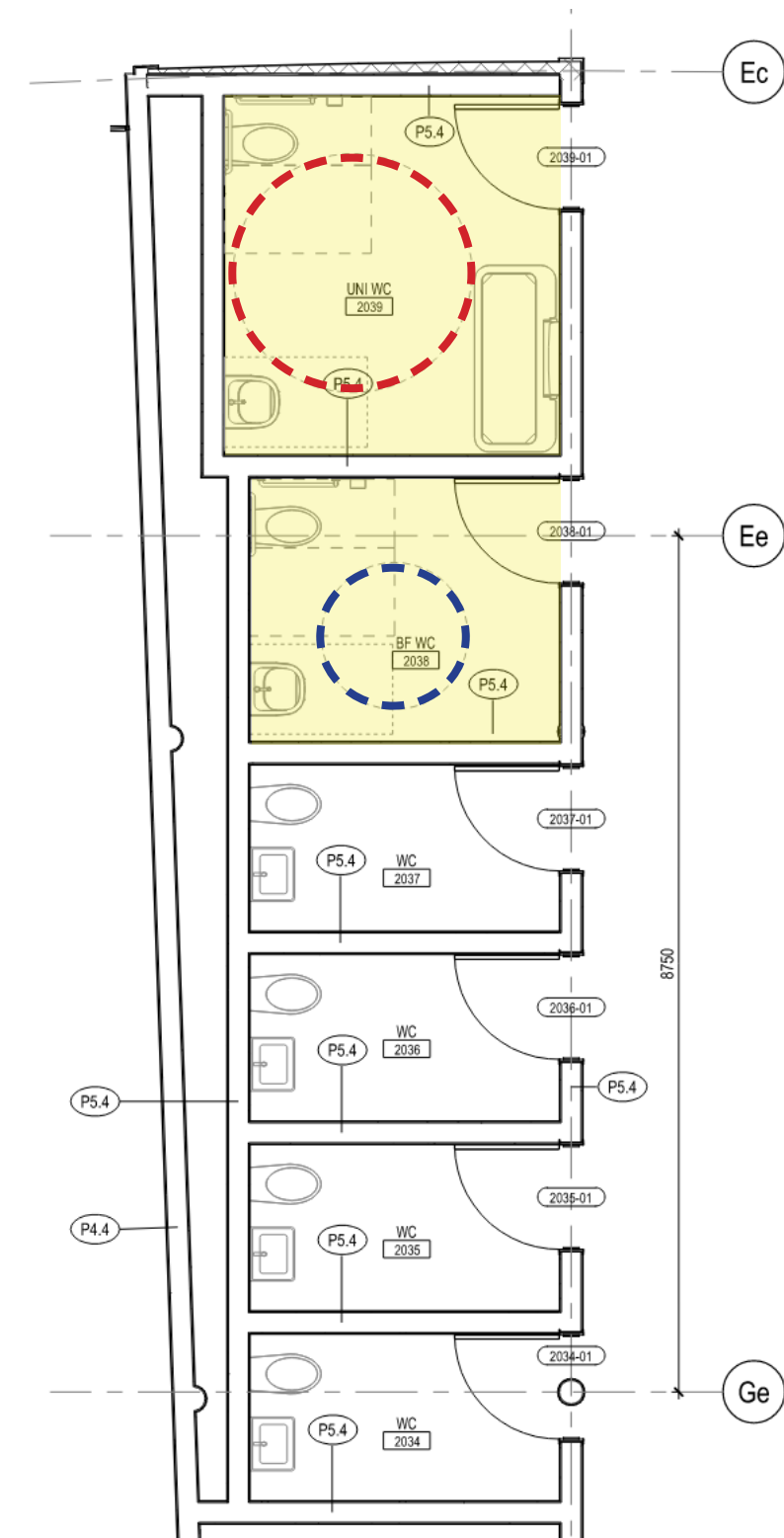
- Barrier free accessible route throughout all public areas of the building
- Walking Track to have one 1200mm wide lane, two 1000mm wide lanes
- 1 Universal Washroom on this level, 5 barrier free washrooms
- Gym and Pool Viewing Area to have designated accessible seating



Washrooms

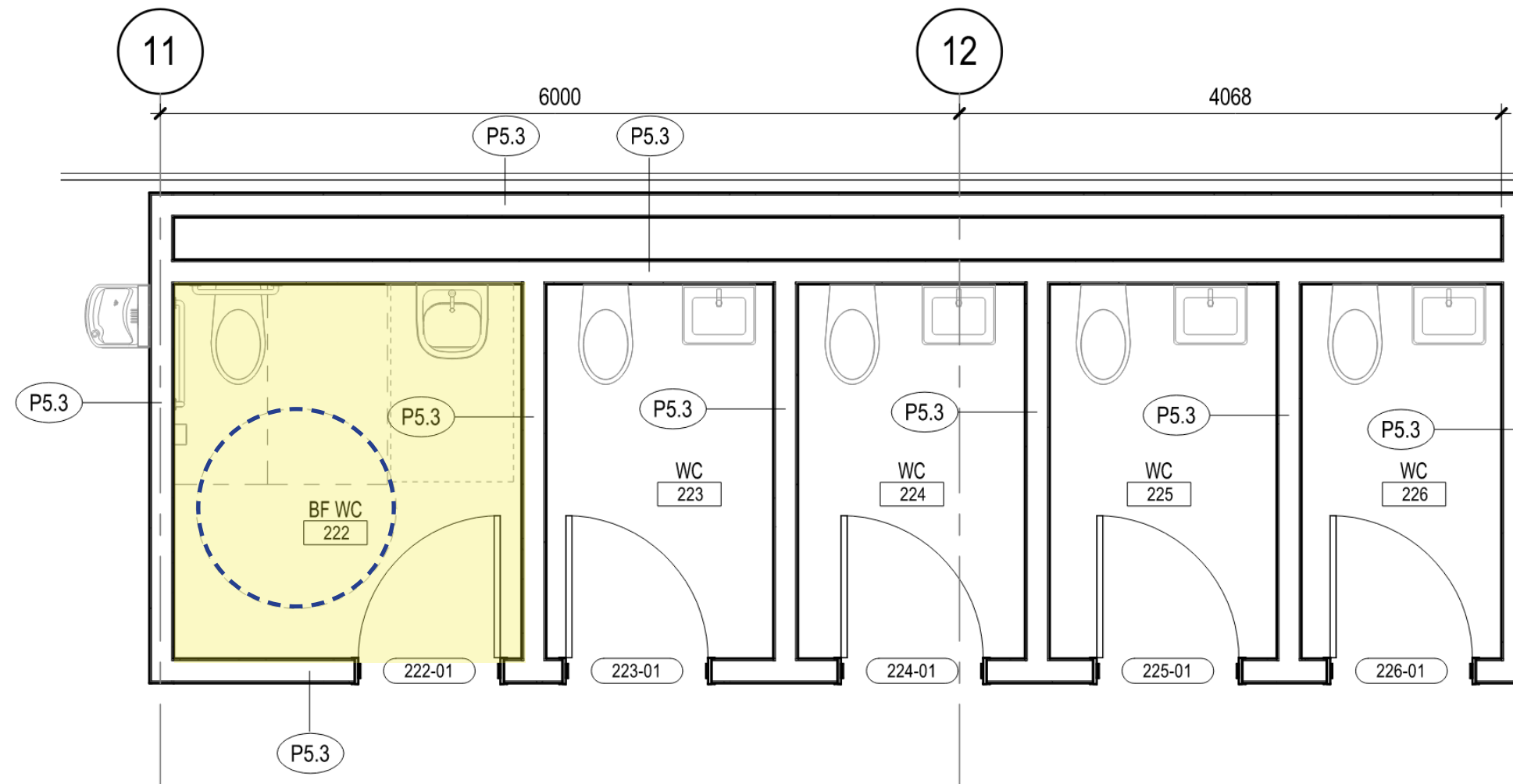
Level 02 Public Washrooms:

- Universal Washroom on all levels, located along the barrier free accessible route
- All universal and barrier free equipped with power door operators
- Universal Washroom with 2440mm turning radius
- Barrier Free Washroom with 1500mm turning diameter



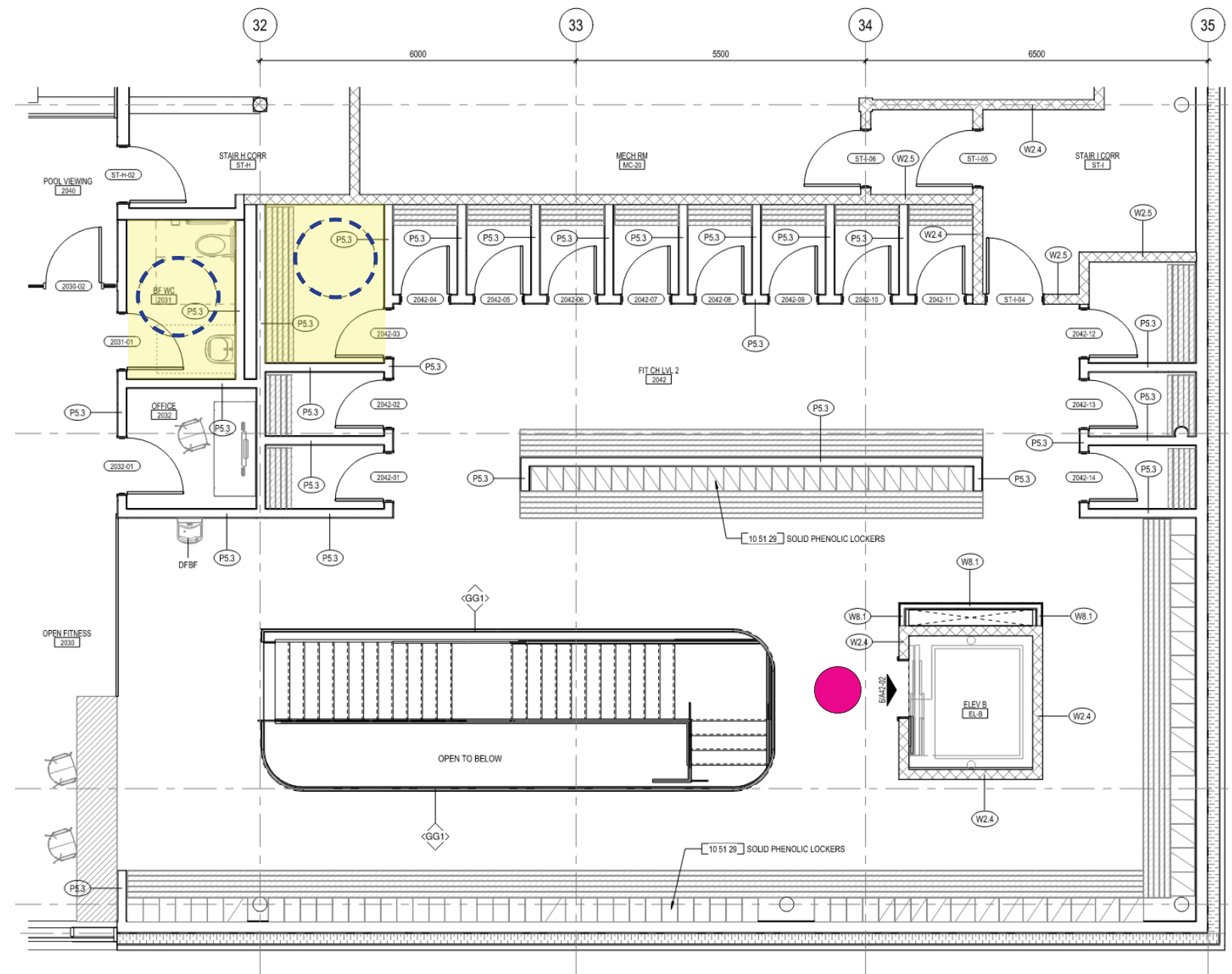
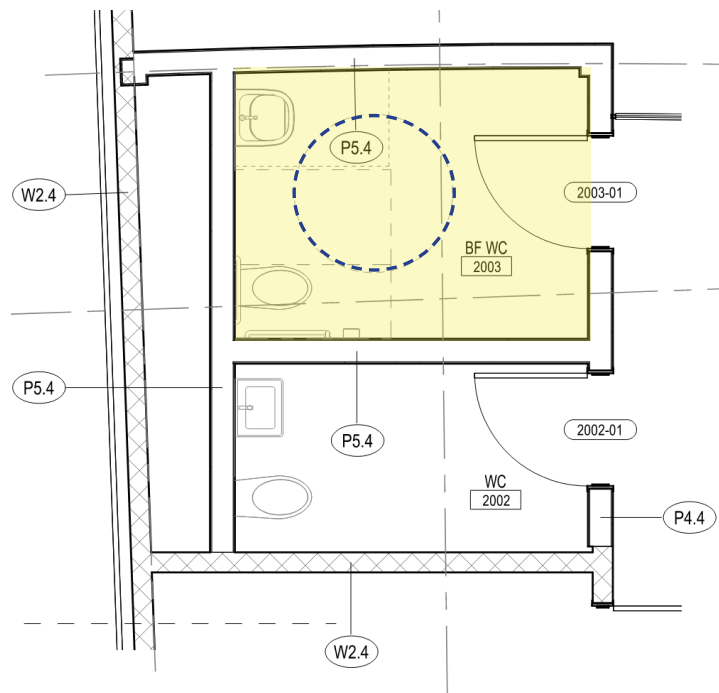
Walking Track Washrooms (Level 02)

- Power door operator for barrier free washroom
- 1 Barrier-Free WC



Fitness Washrooms and Change (Level 02)

- Barrier free path throughout changeroom
- 2 Barrier-Free WC
- Barrier-Free Change Rooms
- Elevator access from Level 01



Interior Finishes

- Floor to wall contrast
- Transparency between programs and levels
- Contrast in door hardware and plumbing fixtures
- Tactile indicators on stairs, ramps and path to service counter and elevator



Questions & Feedback

1. We believe that the open and visually connected layout makes this a facility that is welcoming to everyone in the community. We would like to hear about any concerns you may have with the design or suggestions to achieve an even higher level of accessibility.
2. Are there any issues that you have encountered at recently completed facilities that should be avoided in this project?

Thank You