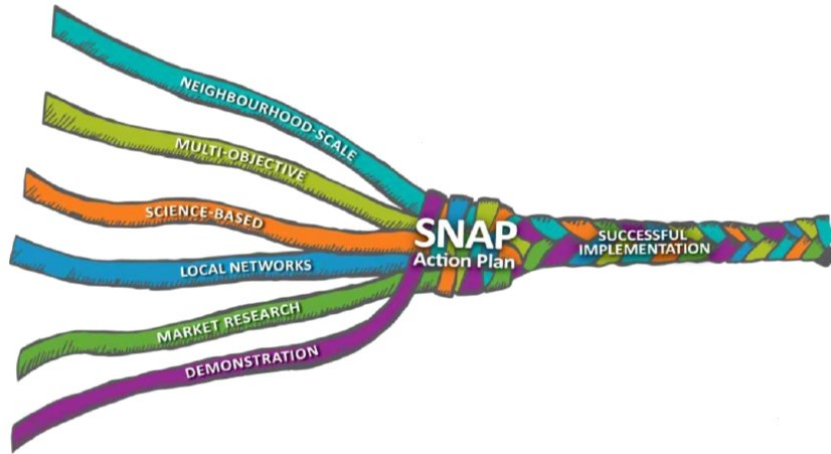


# Bramalea Sustainable Neighbourhood Action Plan

Brampton's Environment Advisory Committee

December 8, 2020

# What is the Sustainable Neighbourhood Action Program (SNAP)?



The Sustainable Neighbourhood Action Program (SNAP) is a collaborative, neighbourhood-based approach for advancing urban renewal and climate action in older urban areas.

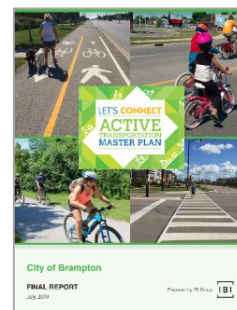
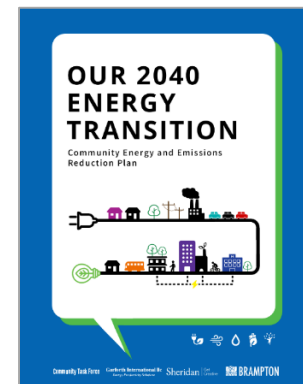
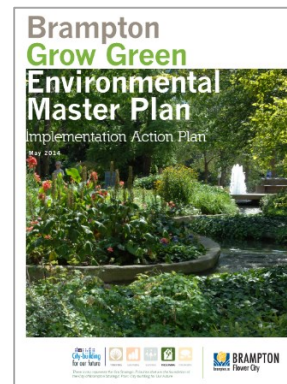
Bramalea SNAP → first rapid SNAP in Brampton

# Multiple Benefits of SNAPs

- Achieves multiple objectives of City, Region, TRCA, local community
- Creates efficiencies
- Presents integrated, on-the-ground solutions
- Showcases innovation
- Fosters collaborative partnerships
- Empowers residence
- Builds a sense of place
- Opens access to funding

# SNAP Supports the...

- Brampton Grow Green Environmental Master Plan
- Community Energy & Emissions Reduction Plan
- Brampton 2040 Vision: Living the Mosaic
- Nurturing Neighbourhoods Program
- Brampton Eco Park Strategy
- Brampton Active Transportation Master Plan
- Brampton One Million Trees Program



# Existing SNAPs in Brampton

## County Court SNAP

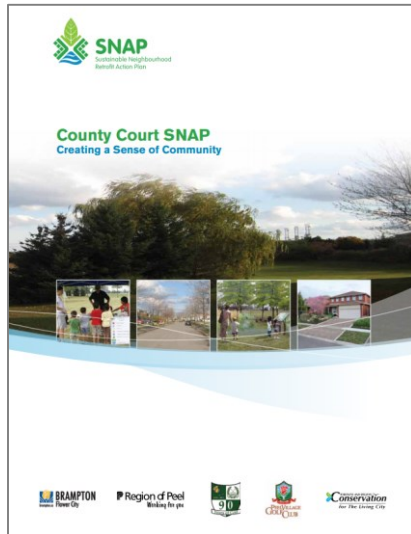


Figure 2: County Court Sustainable Neighbourhood Retrofit Action Plan.

## Fletchers Creek SNAP

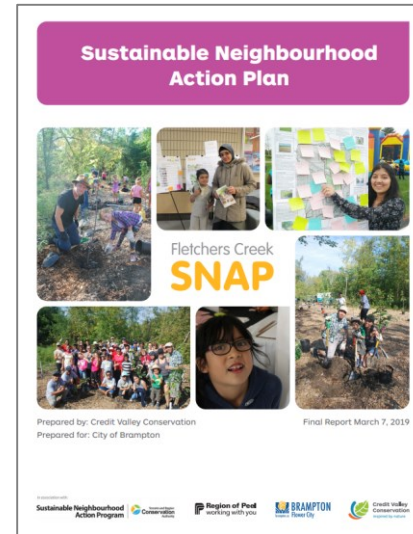


Figure 3: Fletchers Creek SNAP Action Plan Concept



# Bramalea SNAP Profile

- K, E and F sections of the broader Bramalea area
- Built between 1960 - 1980
- Over 13,600 people
- Highly diverse demographics
- Range of income levels
- Mix of recent immigrants and longtime residents
- Low, medium, and high density built form

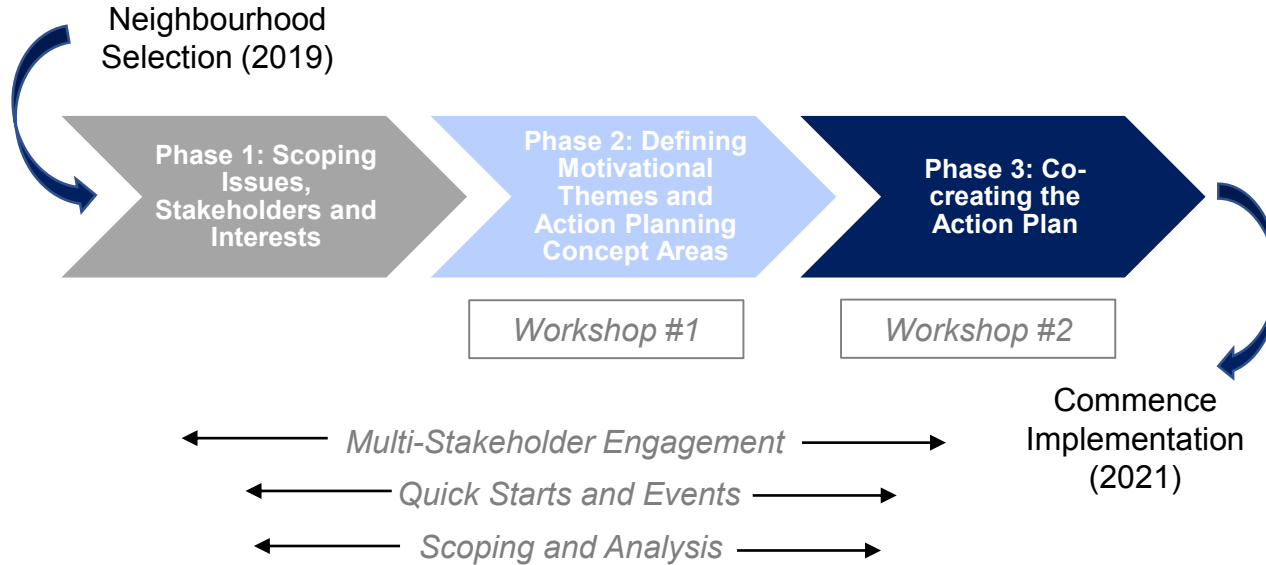


# Bramalea SNAP: Key Municipal & TRCA Priorities

- Climate change mitigation and adaptation
- Neighbourhood well-being
- Multi-modal transportation
- Energy and water conservation
- Stormwater management
- Natural heritage enhancement
- Environmental education
- Active and passive recreation



# Action Plan Co-creation Process





# Shared Action Plan Objectives

- Health and well-being
- Active movement
- Safe and welcoming public spaces
- Engagement and inclusion
- Arts, culture, and place
- Natural system health
- Stormwater management
- Climate resilience / preparedness and low carbon
- Water efficiency
- Materials management

# Bramalea SNAP Action Plan: Six Themes

1. System of Eco Spaces and Green Infrastructure
2. Safe and Active Transportation Network
3. Healthy Local Food System
4. Home and Building Efficiency and Resilience
5. Institutional and Commercial Collaboration and Greening
6. Community Resilience

# System of Eco Spaces and Green Infrastructure

Re-shaping older parks into Eco Spaces, supporting a healthy green infrastructure system extending into backyards, tower properties, and streets

## Recommended Actions:

- Park revitalization and channel rehabilitation in Fallingdale, Earnscliffe, Eastbourne Parks (Eco Spaces)
- Park improvements in Knightsbridge Park (Eco Space)
- Tree planting in parks, boulevards, high-rise properties

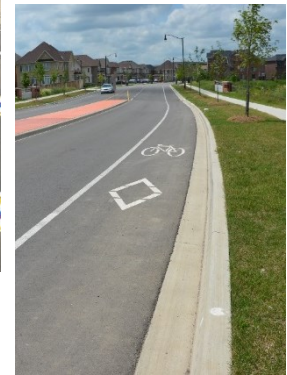
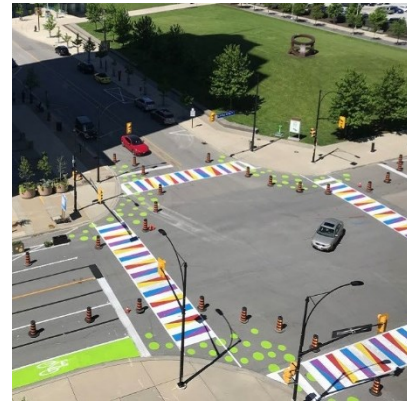


# Safe and Active Transportation Network

Enhancements to the existing pedestrian and cycling routes, including safe pedestrian crossings and multi-objective road diets improvements in key areas.

## Recommended Actions:

- Multi-objective road diets on Kings Cross Rd, Balmoral Dr, Finchgate Blvd, Eastbourne Dr
- Recreational trail along Clark Blvd
- Pedestrian safety improvements at key road crossing locations
- Traffic calming measures
- Recreation trail wayfinding
- Bus stop improvements





# Healthy Local Food System

A series of interconnected urban agriculture initiatives on private and public land to support local growing, sharing, distribution and skills building

## Recommended Actions:

- Community gardens in Fallingdale and Earnscliffe Parks
- Community gardens at multi-unit residential buildings
- Container or balcony gardens
- Food literacy education and skills-building workshops



# Home and Building Efficiency and Resilience

Integrated initiatives and targeted programming to increase overall climate change resilience and reduce GHG emissions in residential homes and buildings, from single detached dwellings to high-rise towers.

## Recommended Actions:

- High density properties: Work with tower property owners to develop site concept plans and/or recommendations that support indoor/outdoor resilience and efficiency, and community co-benefits.
- Low and medium density properties: Develop a targeted Home and Property Resilience and Efficiency Initiative to increase home owner uptake in key indoor/outdoor retrofits.



# Institutional & Commercial Collaboration and Greening

Targeted engagement of institutional and commercial properties to collaborate on community-based SNAP projects and encourage greening initiatives on their own properties.

## Recommended Action:

- Encouraging energy and water retrofits, parking lot greening, sustainable landscaping, tree planting, green or cool roofs, sustainable energy (e.g. solar, geothermal) and district energy.



# Community Resilience

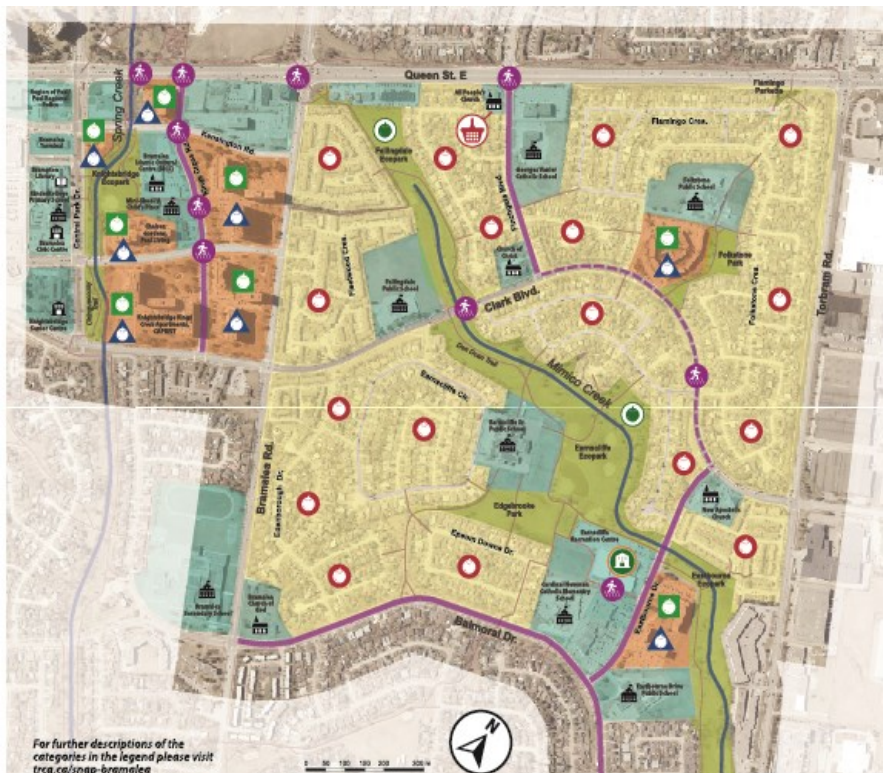
Facilitating community events and programming to help support further neighbourhood connections, capacity-building, education, arts and culture.

- Recommended Actions:
- Fun, family oriented annual events
- Local markets and pop-up initiatives
- Regular local resident meetings
- Community-based and crowd sourced funding initiatives





# Bramalea SNAP Action Plan Map



## Neighbourhood SNAP Action Map

### LEGEND\*

- System of Ecoparks & Green Infrastructure
- Home/Property Resilience & Efficiency
- Tower Resilience & Efficiency
- Institutional, Commercial Collaboration & Greening
- Deep Energy Retrofit

### Safe & Active Transportation Network

- New Multi-purpose Road Diet
- - - New Multi-Purpose Trail
- New/Enhanced Pedestrian Crossing/Connectivity

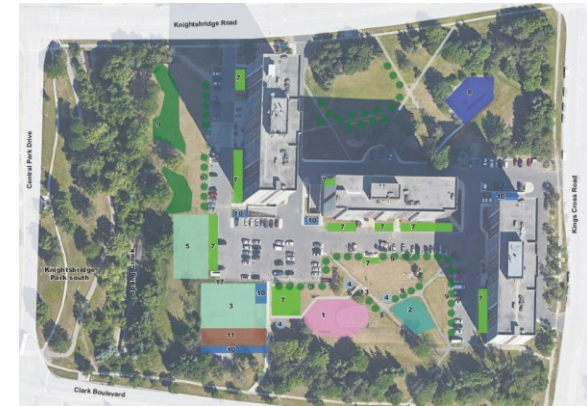
### Healthy Local Food System

- Local Food Distribution Hub
- Balcony Garden
- Backyard Garden
- Community Garden on Private Land
- Community Garden on Public Land

- Water Course
- Existing Trail
- Library
- Places of Worship
- School
- Community Centre

# Quick Wins (2020)

- Community tree planting at Folkstone Park in partnership with ACER (Project Crossroads)
- Community tree planting at 4, 10, and 11 Knightsbridge Rd (tower properties) in partnership with ACER (Project Crossroads)
- Co-develop tower revitalization concept plans with Peel Living and CAPREIT



# Priority Actions (2021 – 2023)

- Channel and floodplain design for re-naturalization of Mimico Creek in Fallingdale, Earnscliffe, and Eastbourne Parks
- Eco Space design for Fallingdale, Earnscliffe, Edgebrooke and Eastbourne Parks
- Road diet design for Balmoral Dr, Eastbourne Dr, and Kings Cross Rd
- Tower resilience and energy/water efficiency initiatives at Peel Living and CAPREIT (engagement and kick start implementation)
- Community research for design of Home/Property Efficiency & Resilience initiative

# Measuring Success: Draft Metric Examples

Sustainability Objective	Key Output (Actions in Short Term) - DRAFT	Key Outcome (Changes Over Long Term / 20 years) - DRAFT
Natural System Health	↑ number and species of trees and shrubs planted	↑ trees canopy cover by 10% by planting approximately 2900 trees
Climate Resilience and Low Carbon	↑ number of home/building retrofits for energy efficiency or renewable energy	↑ household energy efficiency to support City's target of 35% residential energy efficiency gain
Health and Well-being	↑ number community and balcony/backyard gardens in production  ↑ number of participants and hours in learning, education, and skills training SNAP program activities	↑ in % of program participants reporting physical and mental well-being



# Role of Brampton's EAC

- Endorse Bramalea SNAP
- Recommend that presentation be made to Committee of Council
- Build public awareness of the Bramalea SNAP
- Assistance with promotion and delivery of Bramalea SNAP community events and initiatives
- Share knowledge of other programs, events, and initiatives that may be relevant to Bramalea SNAP

# Next Steps

1. Present final Action Plan to City Council
2. Transition to Implementation Team
3. Implementation of priority projects, continued community engagement
4. Development of Performance Monitoring Plan
5. Fundraising in support of projects



# Contacts

Shannon Logan, Senior Program Manager, Sustainable Neighbourhoods  
Toronto and Region Conservation Authority  
[Shannon.Logan@trca.ca](mailto:Shannon.Logan@trca.ca)

Stavroula (Stav) Kassaris, Environmental Planner  
City of Brampton  
[Stavroula.Kassaris@brampton.ca](mailto:Stavroula.Kassaris@brampton.ca)

[www.trca.ca](http://www.trca.ca)