

Roga

A MENTAL HEALTHCARE PLATFORM TO TREAT
EMPLOYEE STRESS & BURNOUT



Contact: alison@rogalife.com



AS SEEN IN:

FASTCOMPANY

Forbes

BUSINESS
INSIDER

WWW.ROGALIFE.COM

Stress is at an all time high.



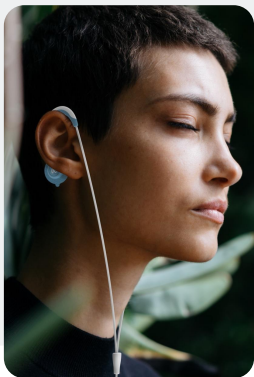
72% of employees are experiencing
intense stress.¹



Performance Decline
Absenteeism
Turnover
Medical Expenses



Roga: Mental Healthcare Platform



Wearable Device

Effectively reduces stress and burnout.



AI Guided Meditations

Personalized guided meditations and treatment progress analytics.

Science Behind the Wearable Device

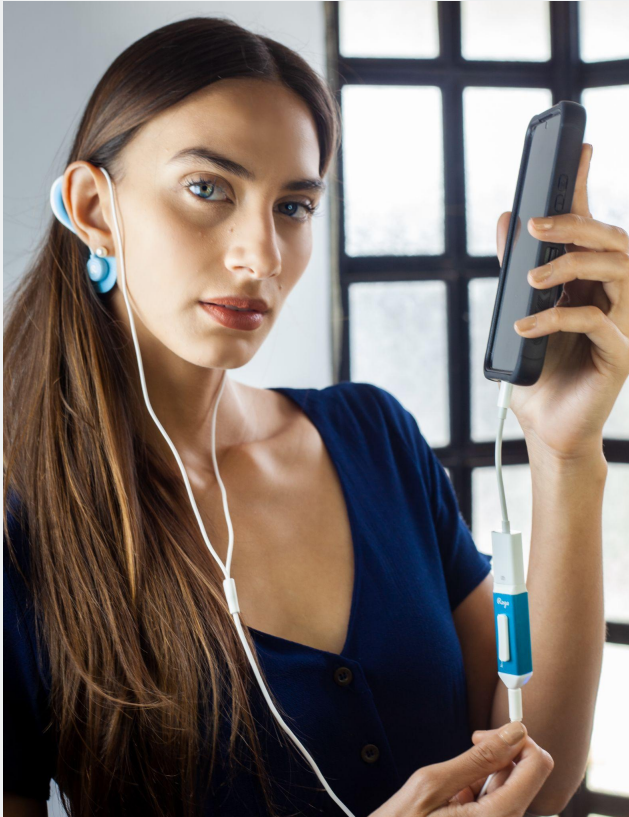
- **16 clinical trials show a decrease** in anxiety symptoms over 6 weeks of daily use (20-60 mins)¹
- **Mechanism: Peripheral nerve stimulation** via the great auricular nerve that reduces default mode network activity, thus worry and rumination²
- **Device use:** Worn once a day for 20-60 minutes for 6-weeks, then twice a week to maintain results



1. Feusner et al. (2012). Effects of cranial electrotherapy stimulation on resting state brain activity. Brain and behavior, 2(3), 211-220.

2. Ching et al. (2022). Efficacy and tolerability of cranial electrotherapy stimulation in the treatment of anxiety: a systemic review and meta-analysis. Frontiers in psychiatry, 13, 899040.

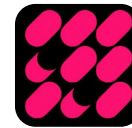
Traction



Launched 8-months ago

5 Clients & 500 Devices Shipped

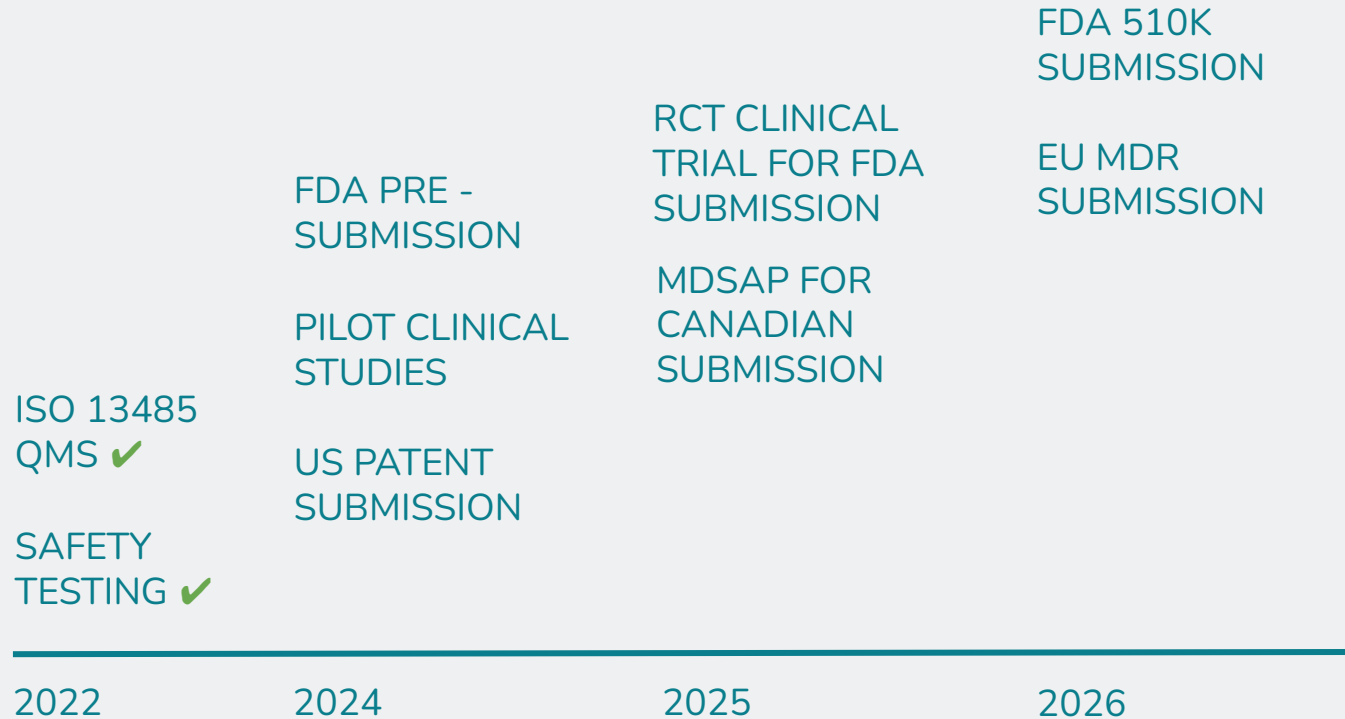
FASTCOMPANY



**World
Changing
Ideas 2023**

Signed \$5M International Deal

Path to Medical Device Status:



Ask:

- **Introductions** to c-suite executives or HR directors of medium-sized, Brampton based businesses with >200 employees to secure potential pilots.
- We are not fundraising right now, but we are always looking for introductions to investors interested in medical technology.
- **Contact:** alison@rogalife.com