

I CERTIFY THAT THIS PLAN IS REGISTERED IN THE LAND REGISTRY OFFICE FOR THE LAND TITLES DIVISION OF PEEL (No.43) AT 11:31 O'CLOCK ON THE 15 DAY OF November, 2017 AND ENTERED IN PARCEL REGISTER(S) FOR PROPERTY IDENTIFIER(S) 14365-2227

AND THE REQUIRED CONSENTS ARE REGISTERED AS PLAN DOCUMENT No. PL 32-36086

FRANCESCO CARA PLOT 11 REPRESENTATIVE FOR LAND REGISTRAR

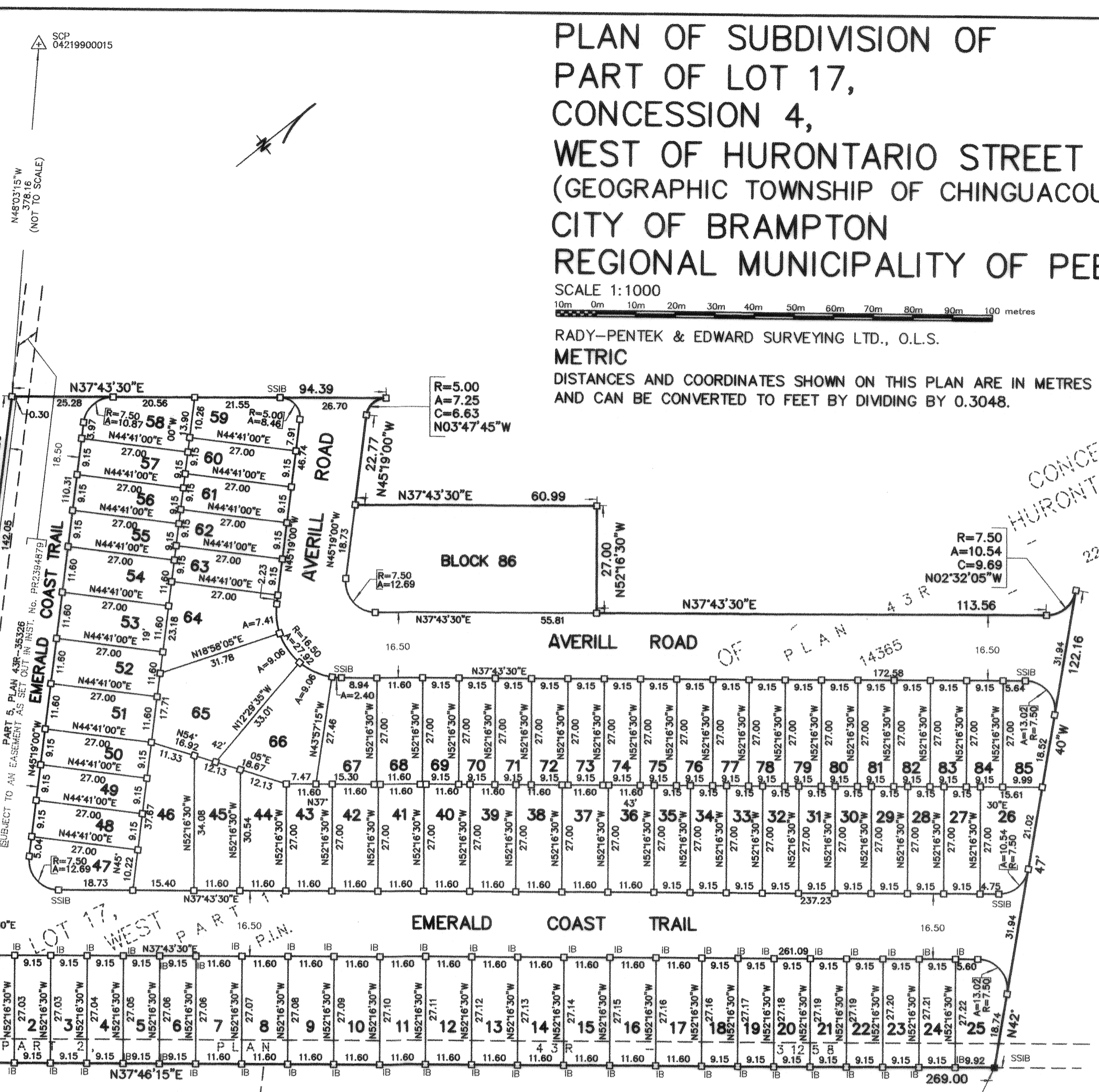
THIS PLAN COMPRISES PART OF P.I.N. 14365-2227 SUBJECT TO AN EASEMENT AS SET OUT IN INST. No. PR2394879 OVER PART 5, PLAN 43R-35326. (AFFECTS ALL OF BLOCK 87, ALL OF BLOCK 88 (0.30 RESERVE) AND PART OF EMERALD COAST TRAIL).

PLAN OF SUBDIVISION OF PART OF LOT 17, CONCESSION 4, WEST OF HURONTARIO STREET (GEOGRAPHIC TOWNSHIP OF CHINGUACOUSY) CITY OF BRAMPTON REGIONAL MUNICIPALITY OF PEEL

SCALE 1:1000 10m 0m 10m 20m 30m 40m 50m 60m 70m 80m 90m 100 metres

RADY-PENTEK & EDWARD SURVEYING LTD., O.L.S. METRIC DISTANCES AND COORDINATES SHOWN ON THIS PLAN ARE IN METRES AND CAN BE CONVERTED TO FEET BY DIVIDING BY 0.3048.

Table with 5 columns: LOT NUMBER/ STREET, RADIUS (METRES), ARC (METRES), CHORD (METRES), BEARING. Lists lots 25-85 and streets like AVERILL ROAD and EMERALD COAST TRAIL.



SURVEYOR'S CERTIFICATE

I CERTIFY THAT: 1. THIS SURVEY AND PLAN ARE CORRECT AND IN ACCORDANCE WITH THE SURVEYS ACT, THE SURVEYORS ACT AND THE LAND TITLES ACT AND THE REGULATIONS MADE UNDER THEM. 2. THE SURVEY WAS COMPLETED ON THE 30th DAY OF AUG. 2017.

DATE Sept 20, 2017 C. P. EDWARD ONTARIO LAND SURVEYOR

OWNER'S CERTIFICATE

THIS IS TO CERTIFY THAT: 1. LOTS 1 TO 85, BOTH INCLUSIVE, BLOCKS 86 AND 87 AND 0.30 RESERVE, NAMELY BLOCK 88, STREETS NAMELY, AVERILL ROAD AND EMERALD COAST TRAIL HAVE BEEN LAID OUT IN ACCORDANCE WITH OUR INSTRUCTIONS.

2. THE STREETS ARE HEREBY DEDICATED AS PUBLIC HIGHWAYS TO THE CORPORATION OF THE CITY OF BRAMPTON.

DATED THE 3rd DAY OF October 2017.

PARADISE HOMES NW INC.

STEVEN WEISZ I HAVE THE AUTHORITY TO BIND THE CORPORATION

MUNICIPAL APPROVAL

21T-10011B C04W17.002 APPROVED UNDER SECTION 51 OF THE PLANNING ACT, R.S.O 1990

THIS 9th DAY OF Nov 2017

ROB ELLIOTT, MCIP., RPP., MBA. COMMISSIONER, PLANNING AND DEVELOPMENT SERVICES DEPARTMENT THE CORPORATION OF THE CITY OF BRAMPTON

NOTES

- Denotes Monument Found, Denotes Monument Set, SSIB Denotes Short Standard Iron Bar, SIB Denotes Standard Iron Bar, IB Denotes Iron Bar, PL1 Denotes Plan 43R-35326, P.I.N. Denotes Property Identifier Number, SCP Denotes Specified Control Point

DUE TO CONSTRUCTION ACTIVITIES AT TIME OF SURVEY ALL SET MONUMENTS ARE PLASTIC BARS UNLESS OTHERWISE NOTED. ALL FOUND MONUMENTS ARE BY RADY-PENTEK & EDWARD SURVEYING LTD., O.L.S.

BEARING NOTE

BEARINGS ARE GRID, UTM ZONE 17, NAD83 (ORIGINAL), DERIVED FROM: SCP 0421990015 NORTH 4838540.514 EAST 591336.029 SCP 04219910097 NORTH 4837605.494 EAST 592283.556

COORDINATES ARE UTM ZONE 17, NAD83 (ORIGINAL), TO URBAN ACCURACY PER SEC. 14 (2) OF O.REG. 216/10, AND CANNOT, IN THEMSELVES, BE USED TO RE-ESTABLISH CORNERS OR BOUNDARIES SHOWN ON THIS PLAN.

DISTANCES ARE GROUND AND CAN BE CONVERTED TO GRID BY MULTIPLYING BY THE COMBINED SCALE FACTOR OF 0.999676.

TOTAL AREA OF SUBDIVISION = 3.755 Ha

rpe RADY-PENTEK & EDWARD SURVEYING LTD. ONTARIO LAND SURVEYORS 643 Chrislea Road, Suite 7 Woodbridge, Ontario L4L 8A3 Tel.(416)635-5000 Fax (416)635-5001 Tel.(905)264-0881 Fax (905)264-2099 Website: www.r-pe.ca DRAWN: D.F./C.D.S. JOB No. 16-297 CHECKED: E.R./C.P.E. CAD FILE No.16297s1