

PLAN OF SUBDIVISION OF
PART OF BLOCK 111, PLAN 43M-1712
PART OF BLOCK 203, PLAN 43M-1677
CITY OF BRAMPTON
REGIONAL MUNICIPALITY OF PEEL

SCALE 1:500
10m 5m 0m 10m 20m 30m 40 metres

R-PE SURVEYING LTD., O.L.S.
METRIC

DISTANCES AND COORDINATES SHOWN ON THIS PLAN
ARE IN METRES AND CAN BE CONVERTED TO FEET
BY DIVIDING BY 0.3048.

NOTES

- DENOTES MONUMENT SET
- DENOTES MONUMENT FOUND
- IB DENOTES IRON BAR
- SSIB DENOTES SHORT STANDARD IRON BAR
- PB DENOTES PLASTIC BAR
- (WT) DENOTES WITNESS
- P.I.N. DENOTES PROPERTY IDENTIFIER NUMBER
- SCP DENOTES SPECIFIED CONTROL MONUMENT

ALL FOUND MONUMENTS ARE BY R-PE SURVEYING LTD., O.L.S.

BEARING NOTE

BEARINGS ARE GRID, UTM ZONE 17, NAD83 (ORIGINAL), DERIVED FROM:
SCP 10519980150 NORTH 4848971.552 EAST 608543.575
SCP 04219910115 NORTH 4847525.604 EAST 607478.776

COORDINATES ARE UTM ZONE 17, NAD83 (ORIGINAL), TO URBAN ACCURACY PER
SEC. 14 (2) OF O.REG. 216/10, AND CANNOT, IN THEMSELVES, BE USED TO
RE-ESTABLISH CORNERS OR BOUNDARIES SHOWN ON THIS PLAN.

DISTANCES ARE GROUND AND CAN BE CONVERTED TO GRID BY MULTIPLYING BY
THE COMBINED SCALE FACTOR OF 0.999715.

SURVEYOR'S CERTIFICATE

- I CERTIFY THAT:
- THIS SURVEY AND PLAN ARE CORRECT AND IN ACCORDANCE WITH THE SURVEYS ACT, THE SURVEYORS ACT AND THE LAND TITLES ACT AND THE REGULATIONS MADE UNDER THEM.
 - THE SURVEY WAS COMPLETED ON THE 30th DAY OF AUGUST, 2018.
- DATE DECEMBER 7th, 2018.

C.P. Edward
C. P. EDWARD
ONTARIO LAND SURVEYOR

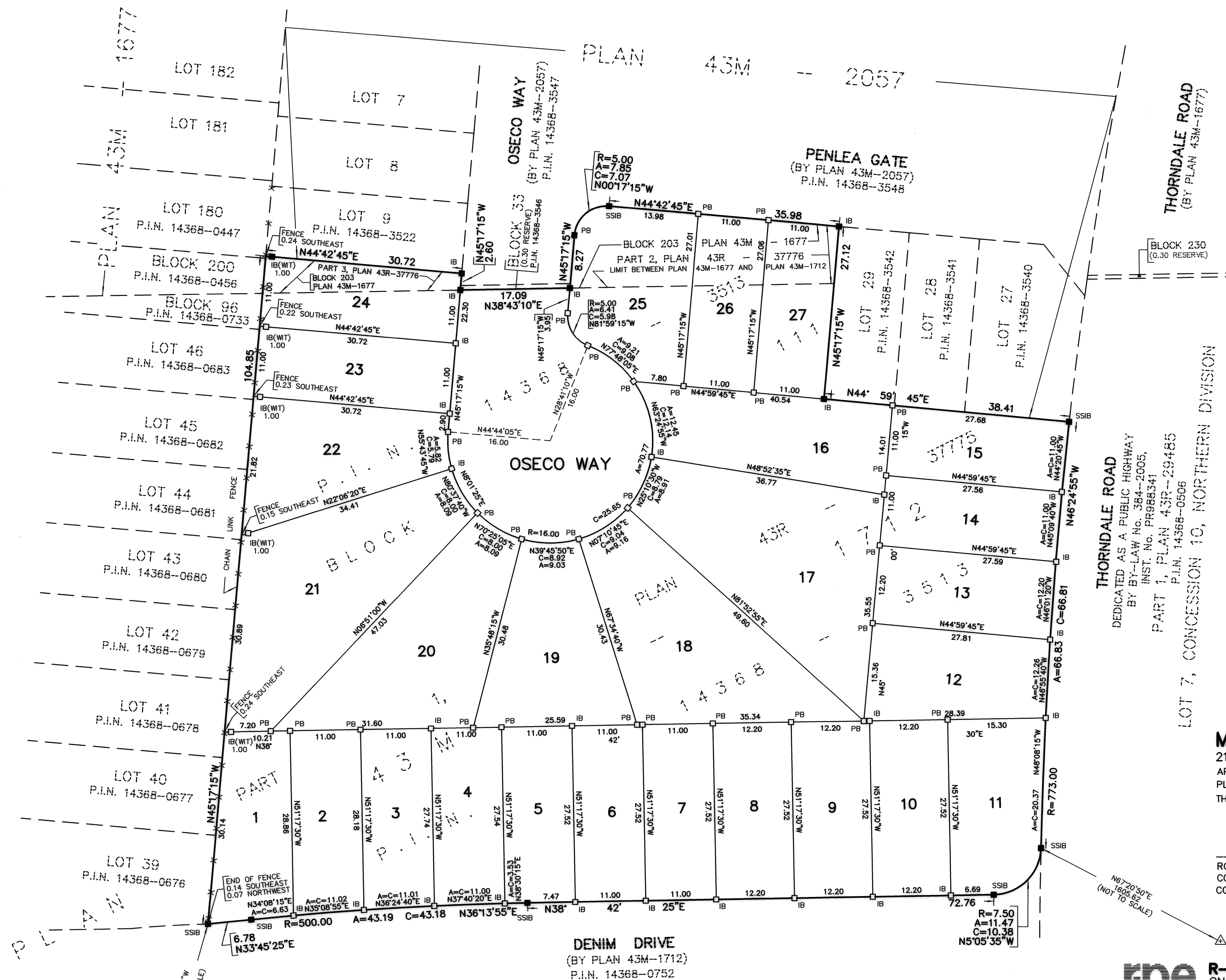
OWNER'S CERTIFICATE

- THIS IS TO CERTIFY THAT:
- LOTS 1 TO 27, BOTH INCLUSIVE AND STREET, NAMELY OSECO WAY HAVE BEEN LAID OUT IN ACCORDANCE WITH OUR INSTRUCTIONS.
 - THE STREET IS HEREBY DEDICATED AS A PUBLIC HIGHWAY TO THE CORPORATION OF THE CITY OF BRAMPTON.

1556613 ONTARIO LIMITED

DATED THE 3RD DAY OF JANUARY, 2019.

Nick Falvo
NICK FALVO
AUTHORIZED SIGNING OFFICER
I HAVE THE AUTHORITY TO BIND THE CORPORATION



TOTAL AREA OF SUBDIVISION = 1.213 Ha

21T-16014B

PLAN 43M-2066

I CERTIFY THAT THIS PLAN IS REGISTERED IN THE LAND REGISTRY OFFICE FOR THE LAND TITLES DIVISION OF PEEL (No. 43) AT 9:55am O'CLOCK ON THE 30th DAY OF JAN, 2019 AND ENTERED IN PARCEL REGISTER(S) FOR PROPERTY IDENTIFIER(S) 14368-3573 AND THE REQUIRED CONSENTS ARE REGISTERED AS PLAN DOCUMENT No. PR3439611

Tyson Giroux
REPRESENTATIVE FOR LAND REGISTRAR

THIS PLAN COMPRISES ALL OF P.I.N. 14368-3543

THORNDALE ROAD
DEDICATED AS A PUBLIC HIGHWAY
BY BY-LAW No. 384-2005,
INST. No. PR988341
PART 1, PLAN 43R-29485
P.I.N. 14368-0506

LOT 7, CONCESSION 10, NORTHERN DIVISION

MUNICIPAL APPROVAL
21T-16014B
APPROVED UNDER SECTION 51 OF THE
PLANNING ACT, R.S.O. 1990
THIS 19th DAY OF JANUARY, 2019

Rob Elliott
ROB ELLIOTT, M.C.P., R.P.P.
COMMISSIONER, PLANNING AND DEVELOPMENT SERVICES DEPARTMENT
CORPORATION OF THE CITY OF BRAMPTON

rpe R-PE SURVEYING LTD.
ONTARIO LAND SURVEYORS
643 Chrislea Road, Suite 7
Woodbridge, Ontario L4L 8A3
Tel. (416) 635-5000 Fax (416) 635-5001
Tel. (905) 264-0881 Fax (905) 264-2099
Website: www.r-pe.ca
DRAWN: D.F./E.R. CHECKED: C.P.E.
JOB No. 16-059 CAD FILE No. 16059s2b