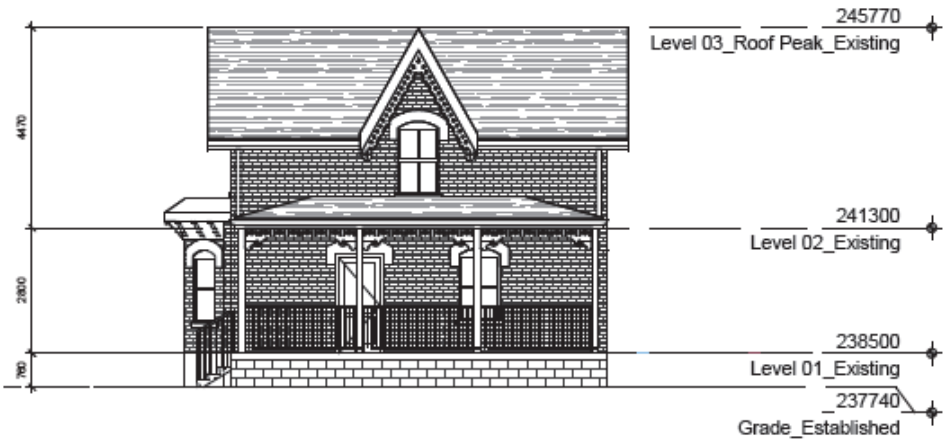


10020 Mississauga Road, Documentation and Salvage Plan

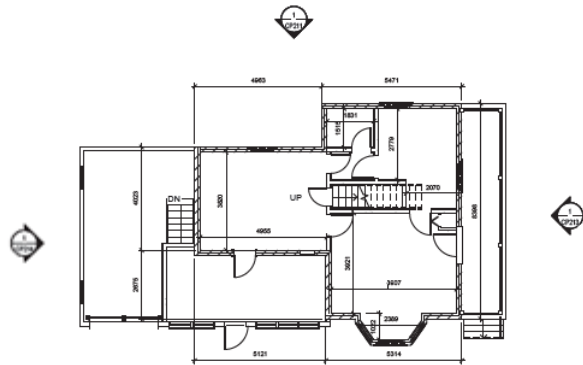


East elevation (ERA, 2024).

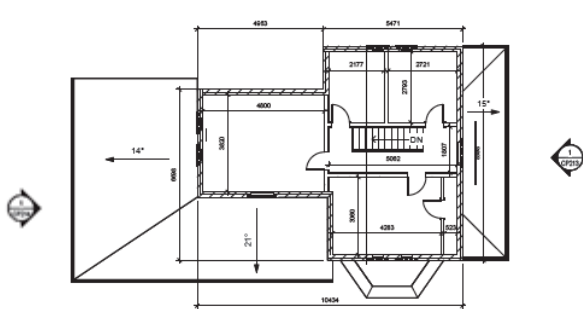


North elevation (ERA, 2024).

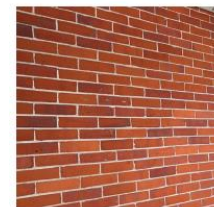
Measure drawing documentation (ERA, Documentation report)



Ground floor plan (ERA, 2024).



Second floor plan (ERA, 2024).



Face bricks (ERA, 2024).



Fieldstone foundation (ERA, 2024).



Decorative wood (ERA, 2024).



Wood window and trim (ERA, 2024).



Interior door (ERA, 2024).



Metal grill (ERA, 2024).

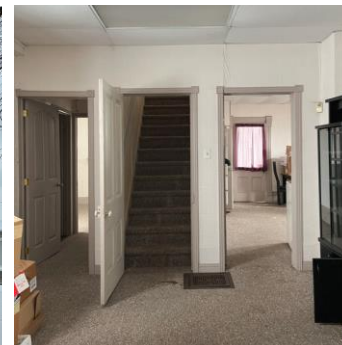
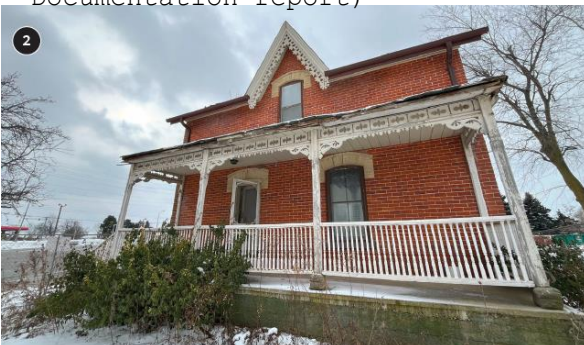


Interior wood trim (ERA, 2024).



Wood balustrade (ERA, 2024).

Proposed salvaged material as par of demolition and deconstruction process (ERA)

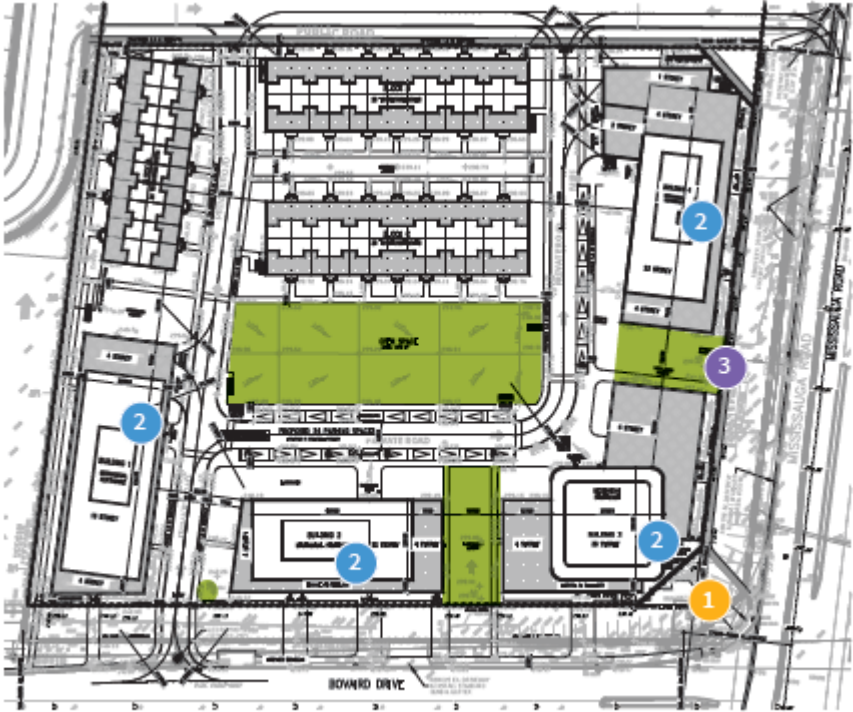


Exterior and Interior photographic documentation (ERA, Documentation report)



Proposed reuse of Salvaged Materials: interior feature wall (left); landscape design features with fieldstone foundation (right) (ERA)

10020 Mississauga Road, Interpretation Plan



Revised site plan (Architecture Unfolded, 2024; annotated by ERA).



1

Public Art: Theme of Rural Economies, in particular the Site’s historical association with the Apple Factory, by drawing inspiration from archival materials. Figure here shows example of one such public art by artist Eldon Garnet at 582 Sherborne St

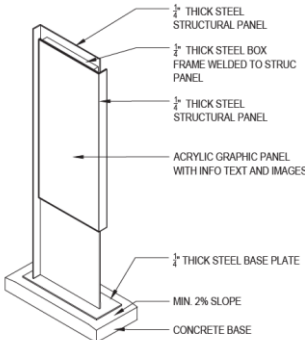
2



Salvaged Brick Feature Wall :

Theme of Rural Economies, in particular the Site’s historical association with the Apple Factory, by drawing inspiration from archival materials.

3



Schematic plaque design (ERA, 2024).

Plaque Installation: This installation consists of a freestanding plaque in the public realm interpreting both of the Site’s historical themes. The plaque would be located near Mississauga Road at the entrance to the promenade/amenity space

4

Landscape Elements: This installation consists of a series of landscape elements in the new public realm interpreting the theme of Evolving Landscapes, specifically the Site’s rural and agricultural heritage

