

Date: 2025-01-17

Report number: Planning, Bld & Growth Mgt-2024-260

Attachment 3 – Reference Images

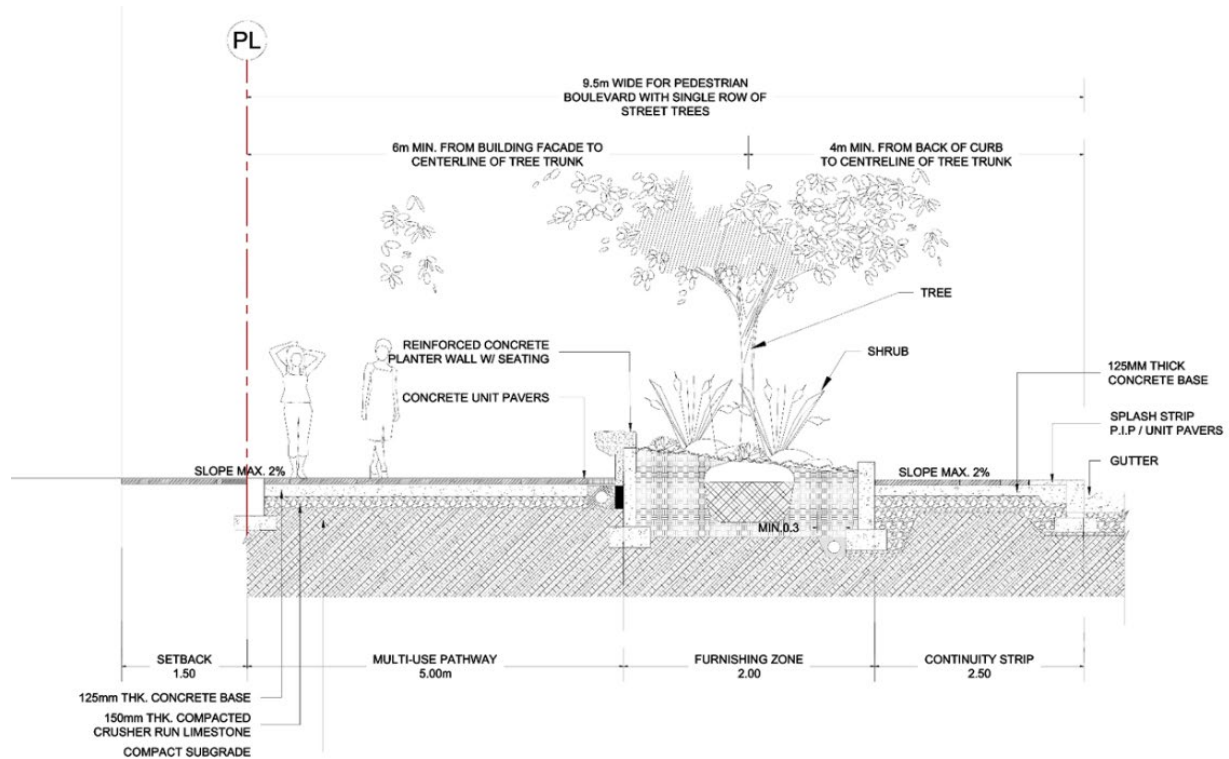


Figure 1: Boulevard cross section illustrating multi-use path with single row of trees.

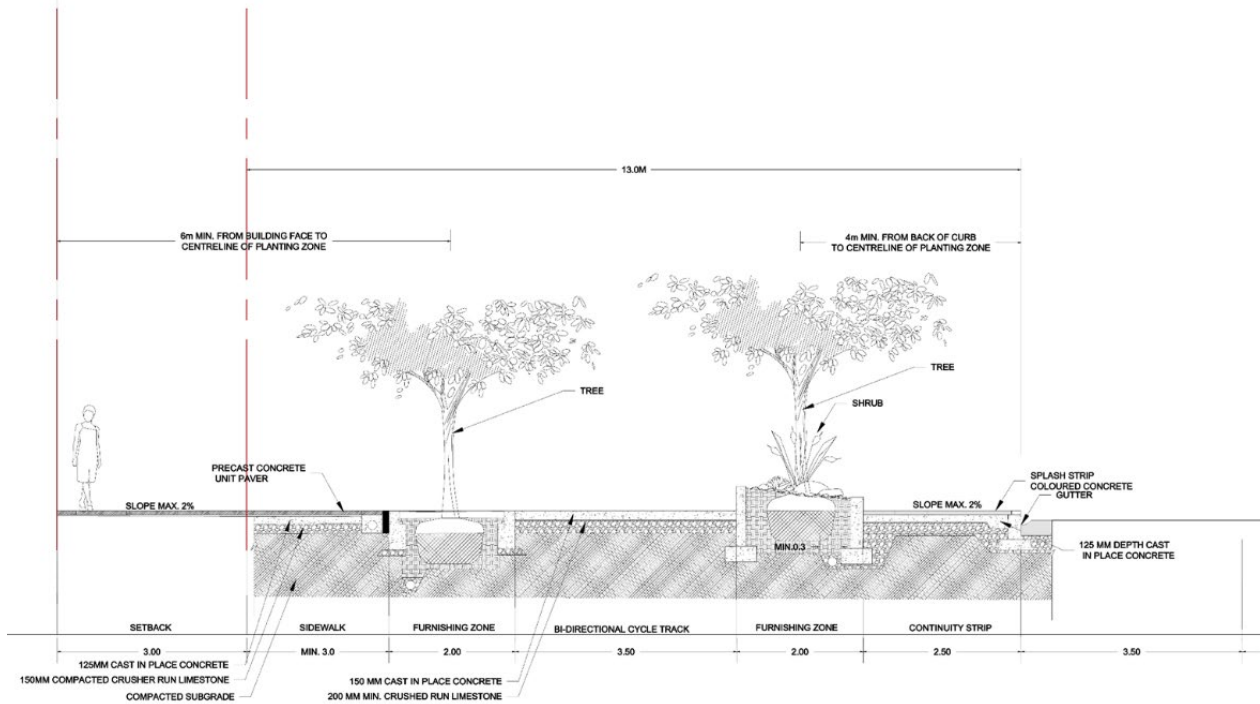


Figure 2: Boulevard cross section illustrating dedicated cycle tracks and sidewalks with double row of trees

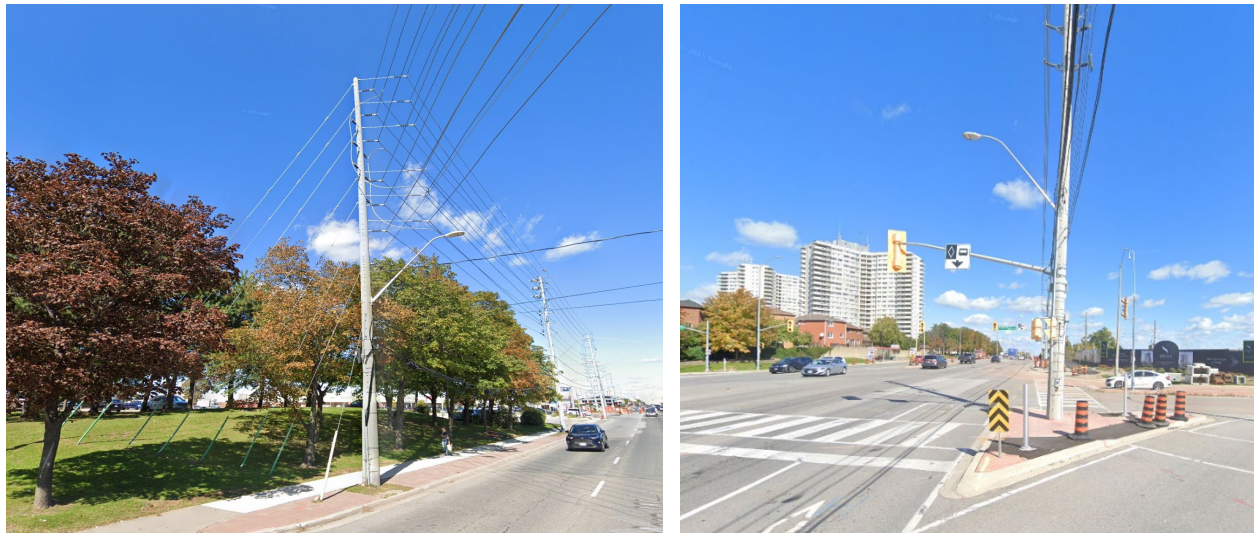


Figure 3: Alternative #1, Do Nothing, Existing scenario along Steeles Avenue

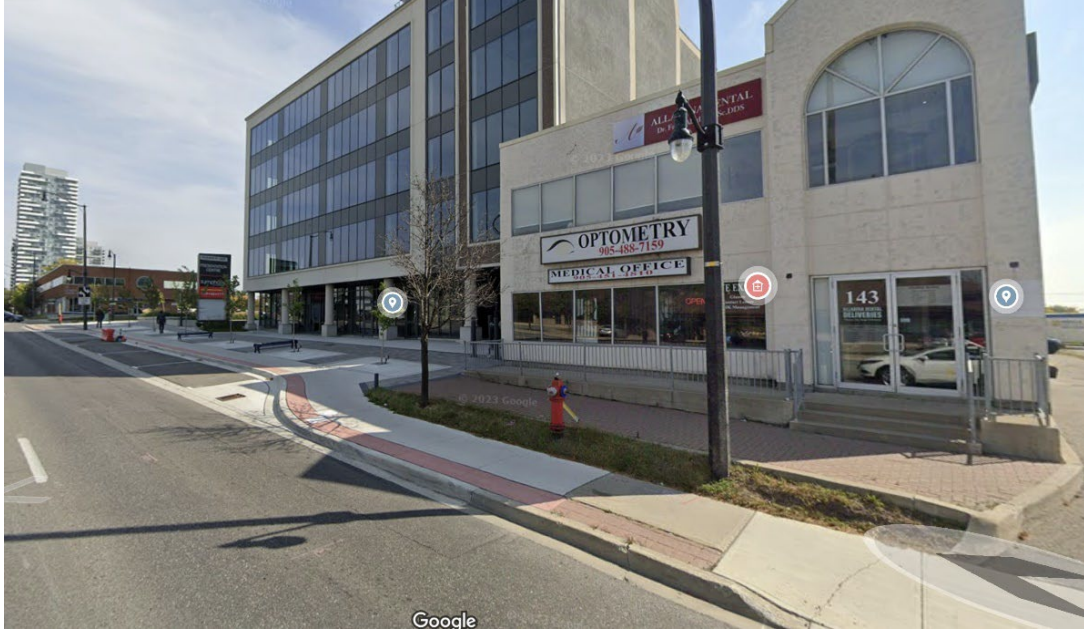


Figure 4: 148 Queen Street East development with fragmented streetscape infrastructure as the neighbouring landowner has not planned for redevelopment

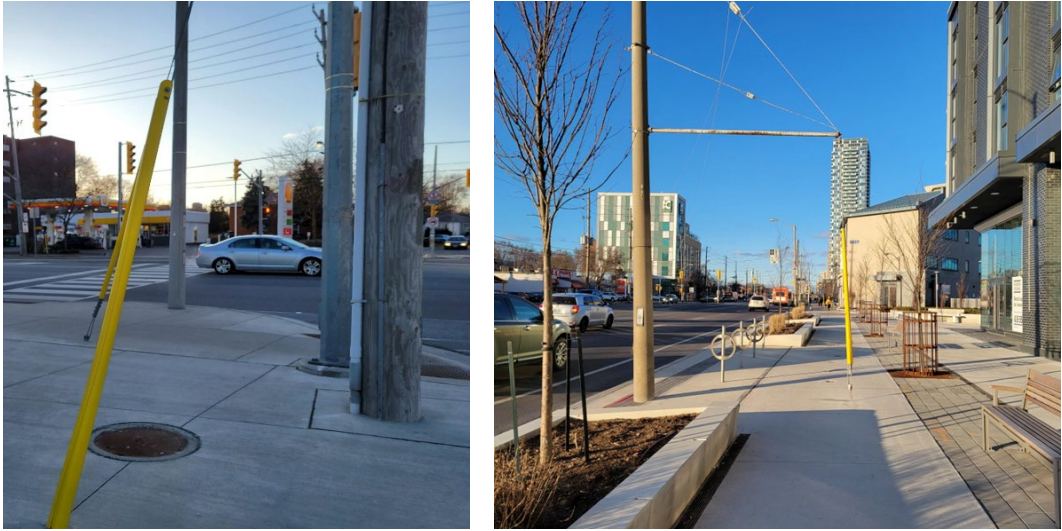


Figure 5: Alternative #2, Aerial relocation of hydro poles with guy wires resulting in interference with infrastructure



Figure 6: Alternative #3, Removal of hydro poles w/ below-grade relocation of existing cables creating space for planned infrastructure