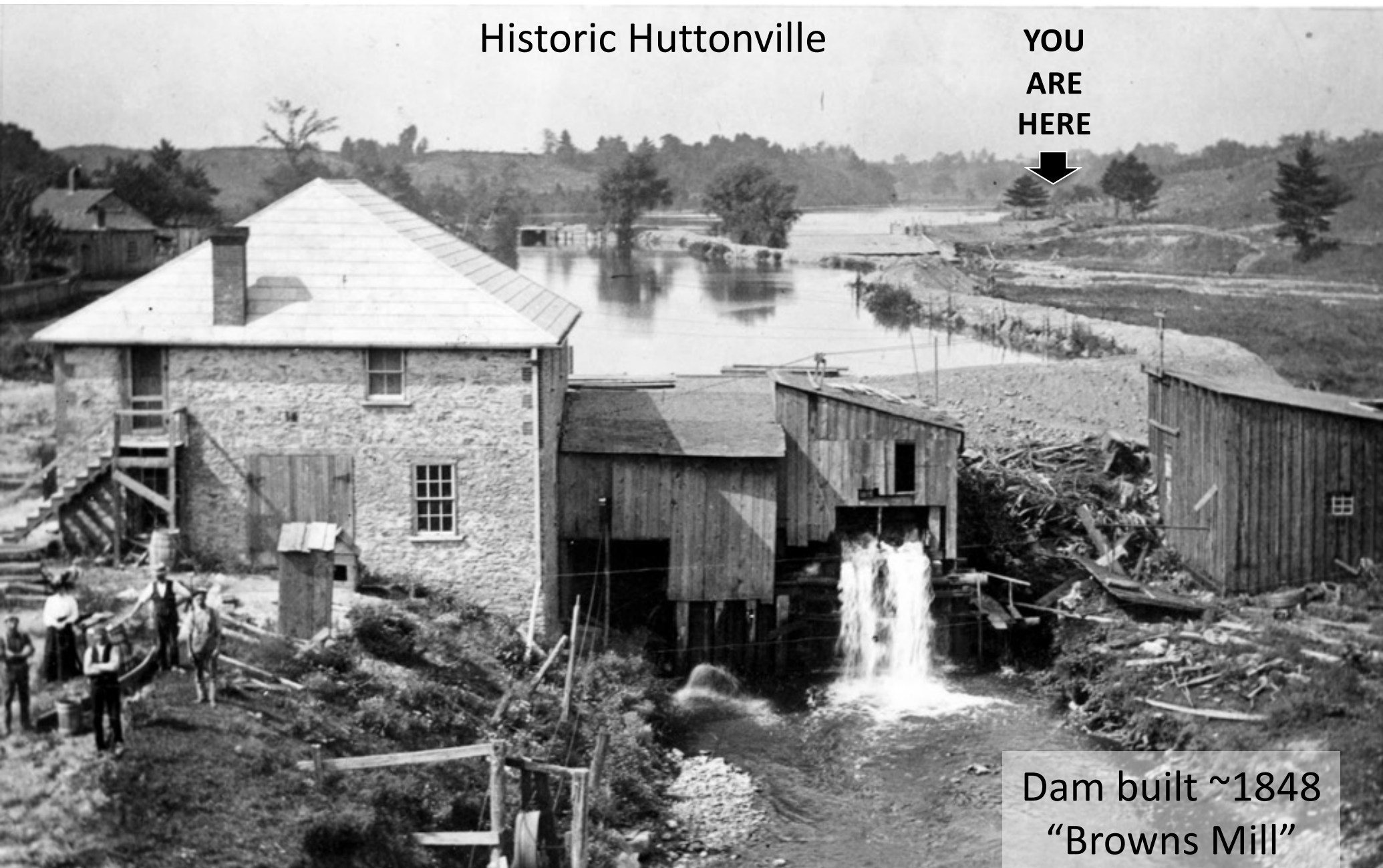


Historic Huttonville

YOU
ARE
HERE



Dam built ~1848
"Browns Mill"

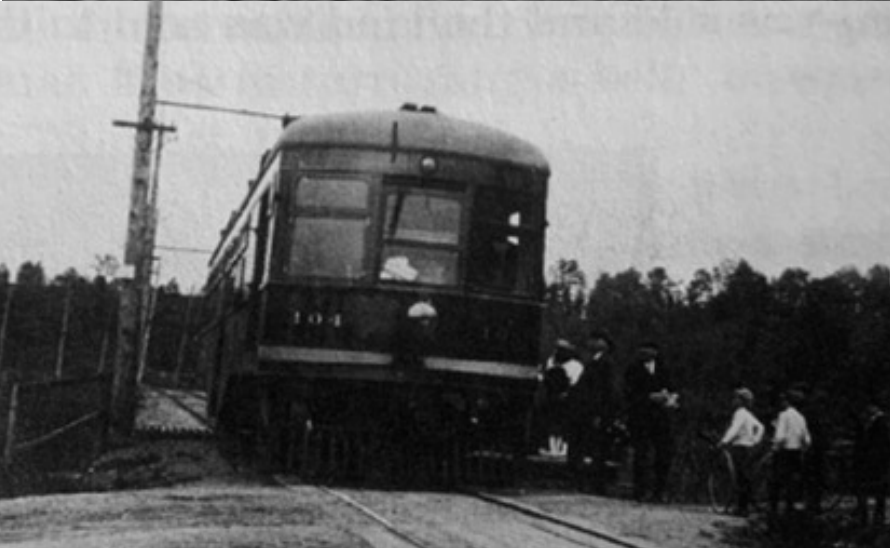


Historic Huttonville

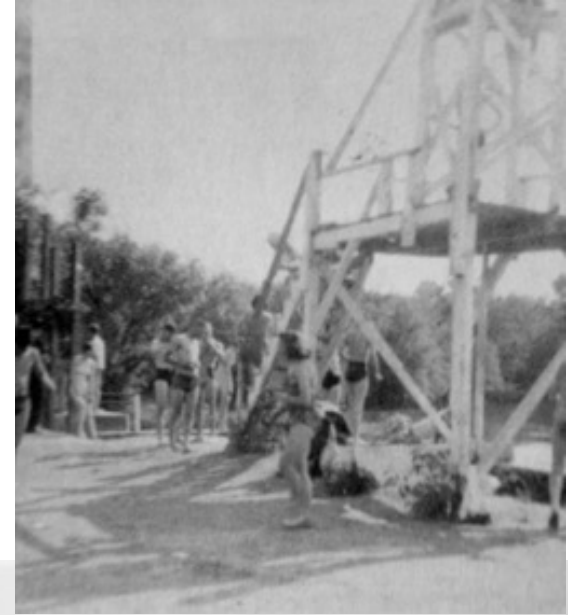
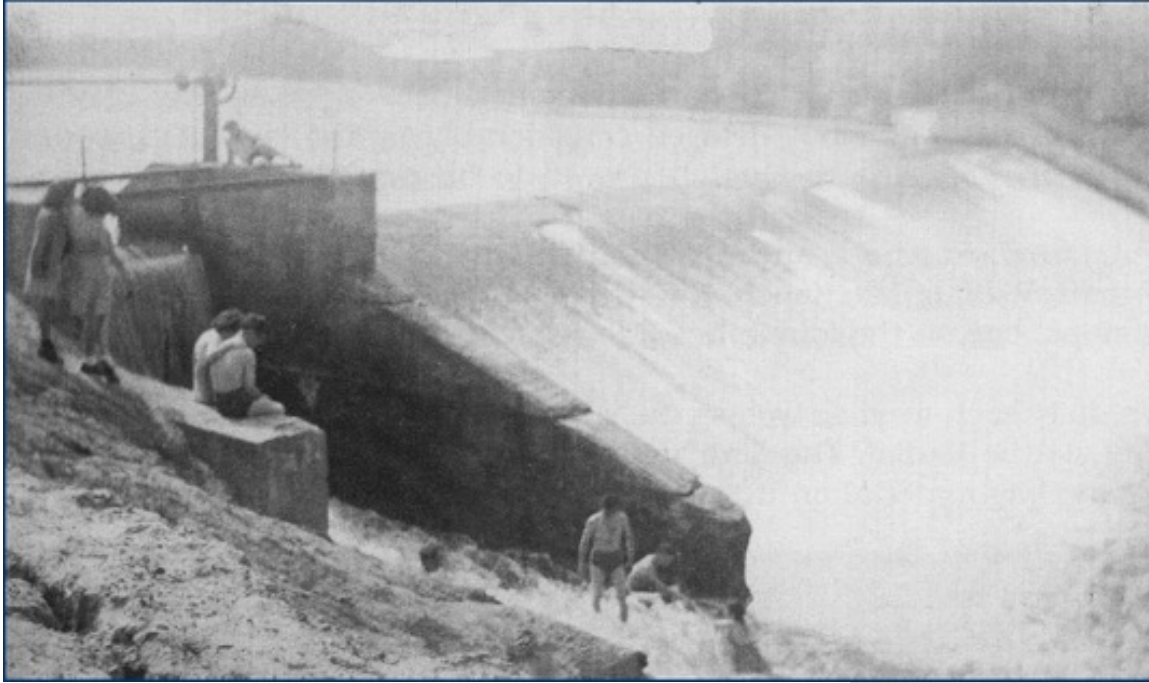
YOU
ARE
HERE
↓



Huttonville's "Maple Park"



Radial train crossing
Embleton Rd.



Dam with
recreational
waters the size of
Grenadier Pond



Dam structures today – dam and sluice gate



Dam structures today – water entry from sluice



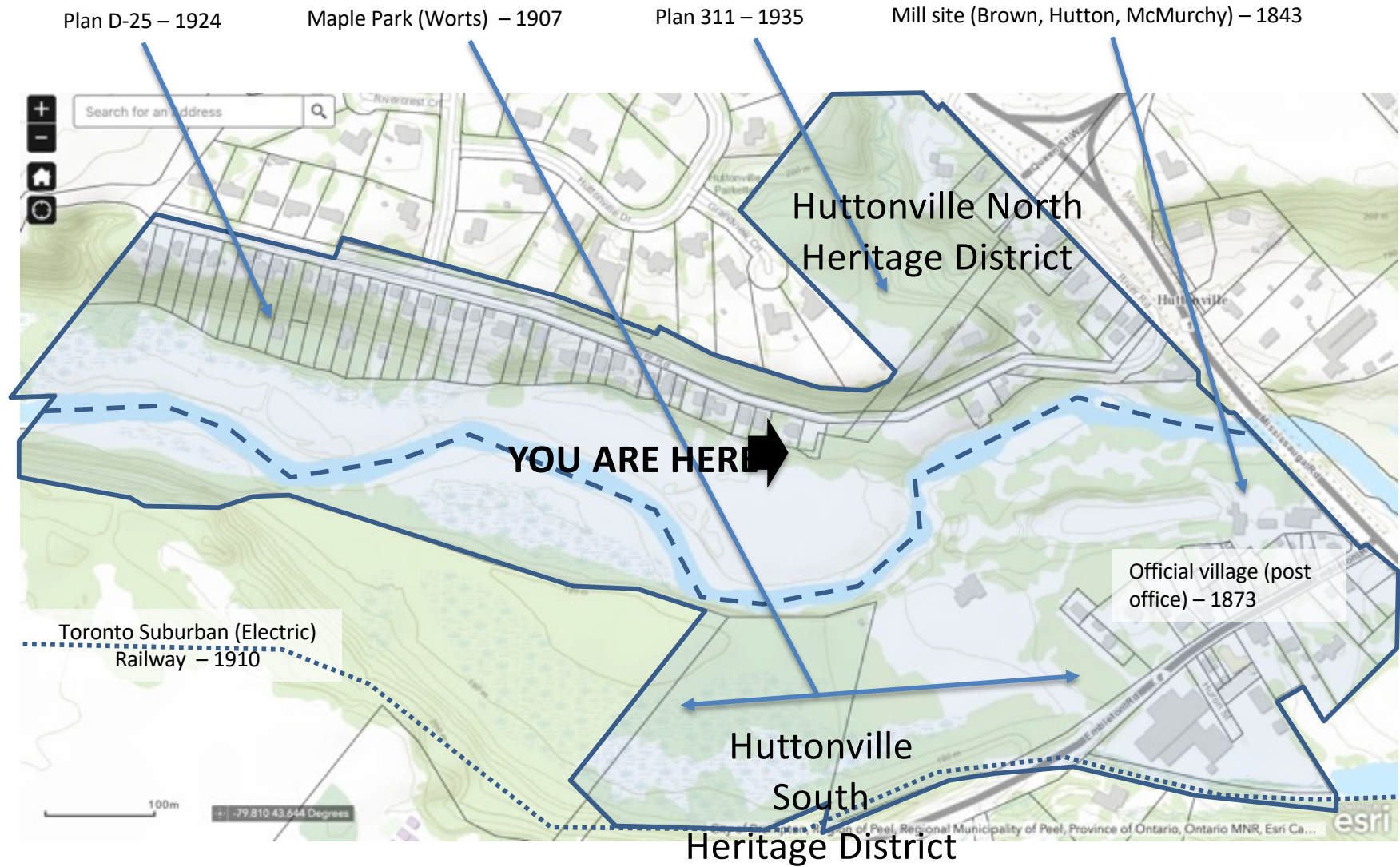
Dam structures today – powerhouse



Dam structures today – mill buildings 1 and 2



Historic Huttonville



River Road listed as “Cultural Heritage Landscape” 2010
(yellow = minor variance recorded)

