



Accessibility Advisory Committee (AAC) Meeting

City of Brampton City Hall, First Floor
2 Wellington Street West, Brampton ON

25 February 2025



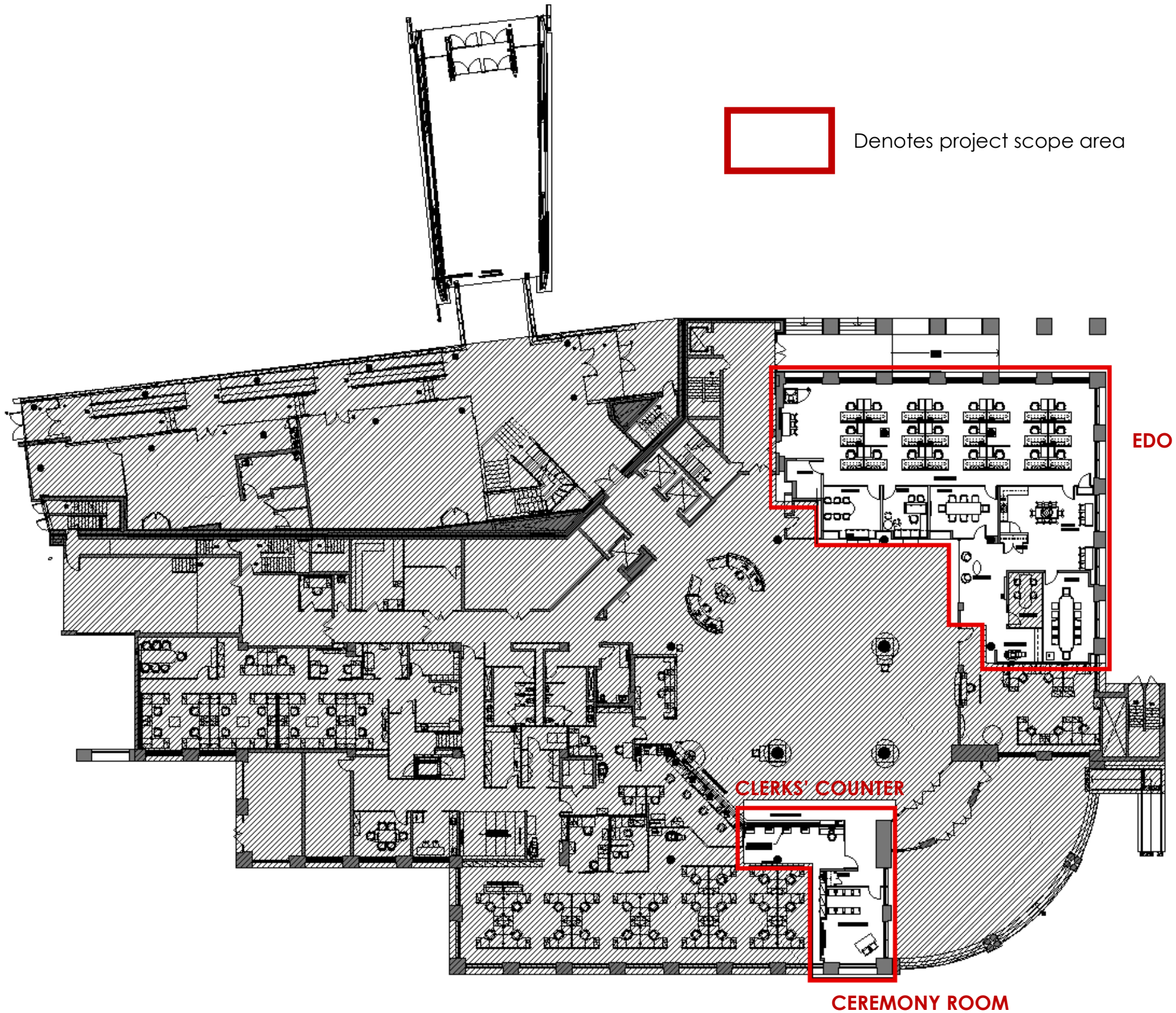
Contents


- section 1** **Key Plan**

- section 2** **Project Overview**

- section 3** **Accessibility Features**
 - EDO
 - Clerks' Counter
 - Ceremony Room

- section 4** **Interior Finishes**



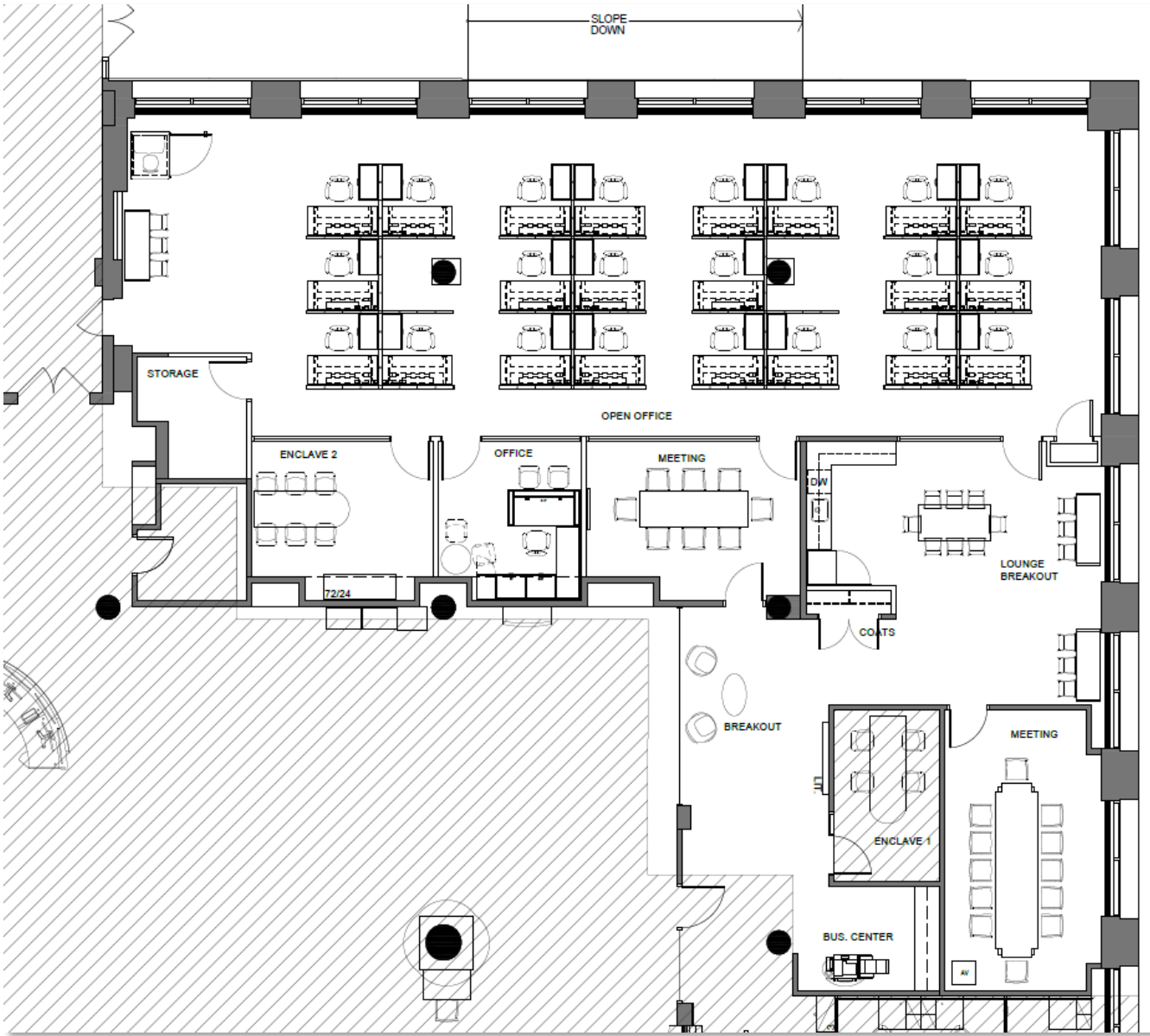
 Denotes project scope area

EDO

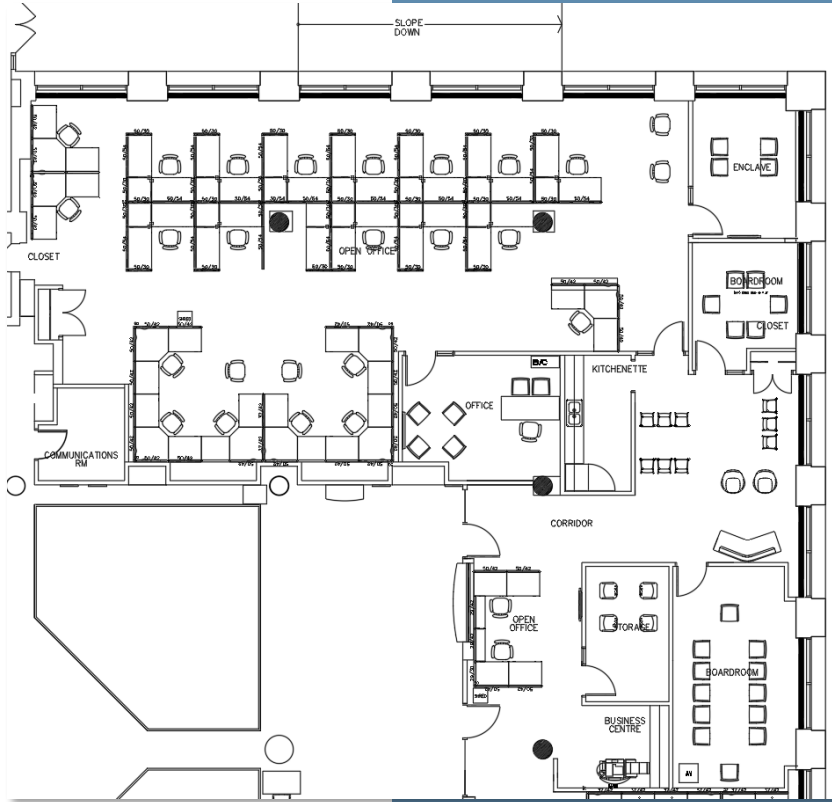
CLERKS' COUNTER

CEREMONY ROOM

Key
Plan
First Floor



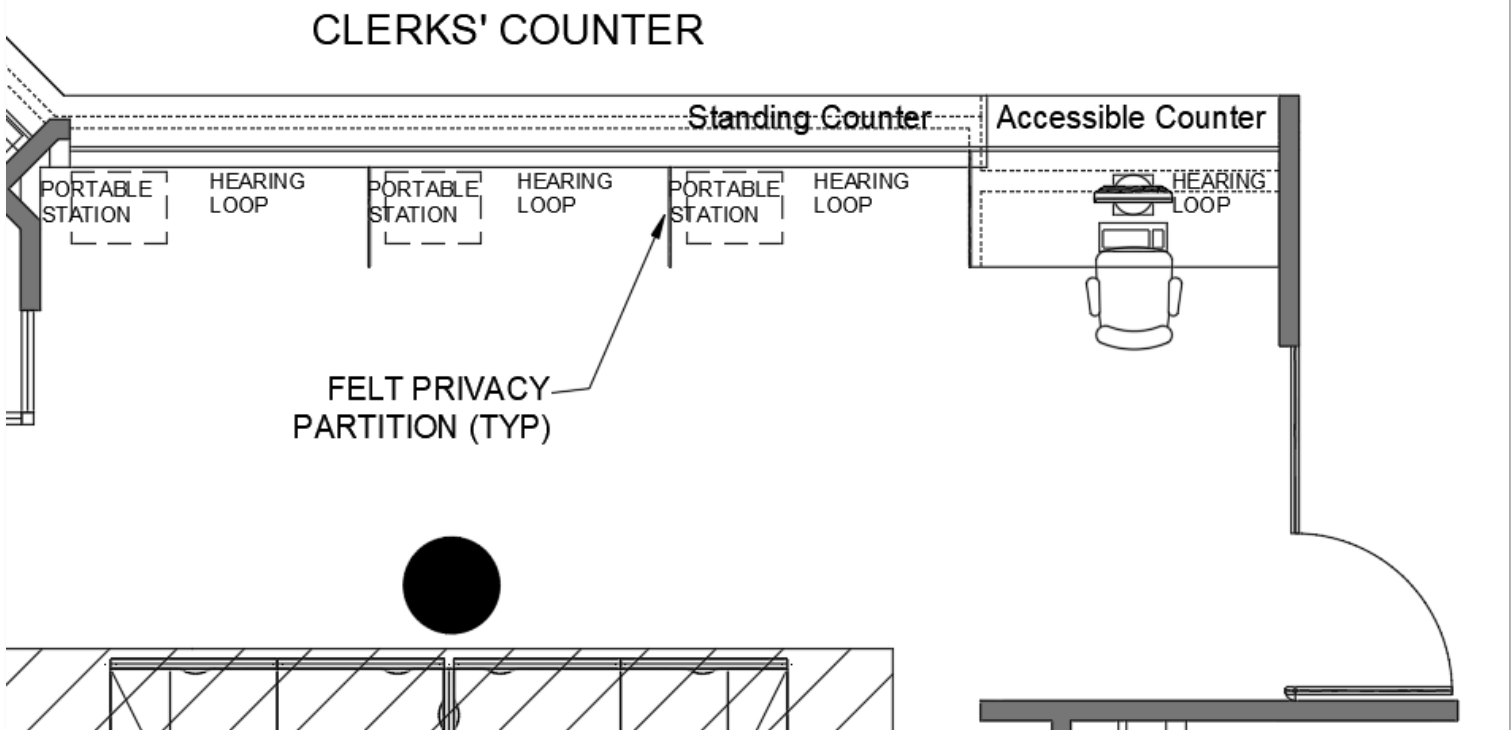
Proposed Plan



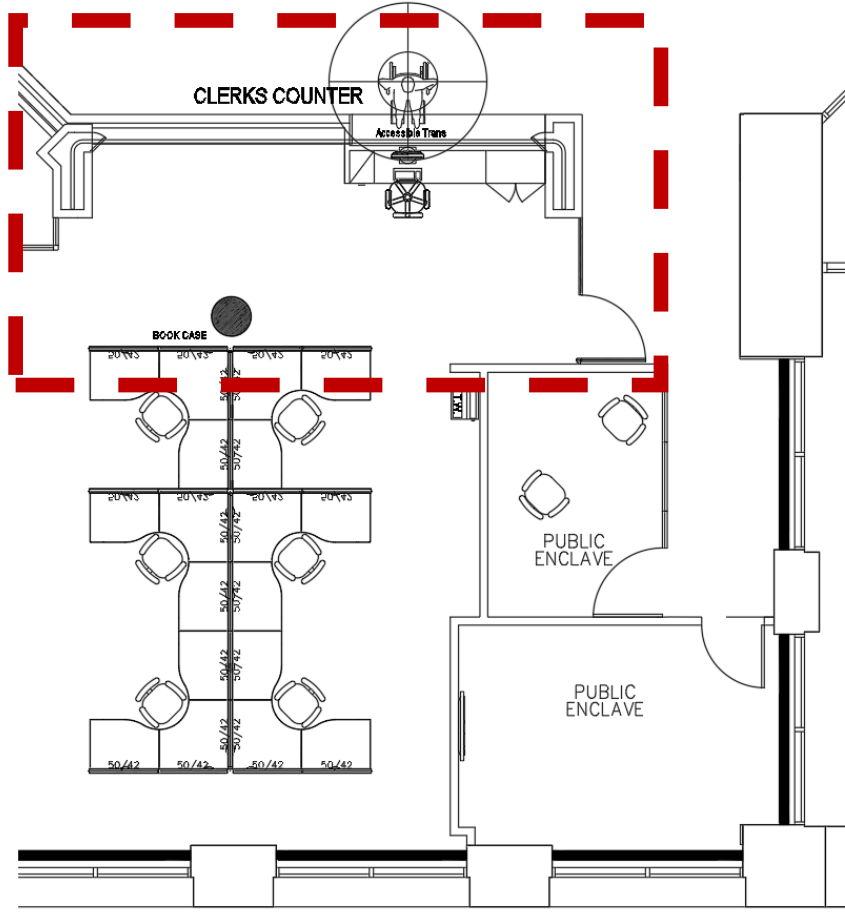
Existing Plan

Economic Development Office (EDO)

The Economic Development Office requires additional workstations for staff growth; the existing front counter is not used and creates confusion for the public; moving the existing meeting rooms from the perimeter to the interior space provides more access to natural light; a larger meeting room with direct access from the entrance area allows for better security and traffic flow for staff to meet with external leaders.



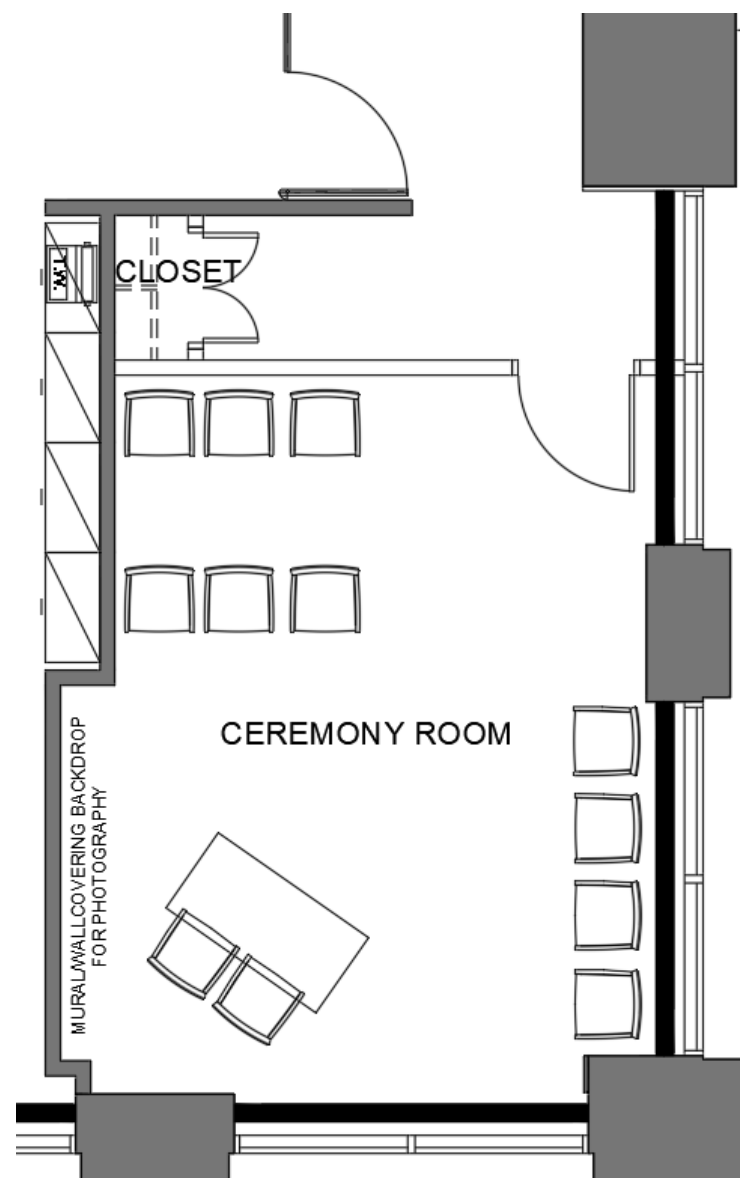
Proposed Plan



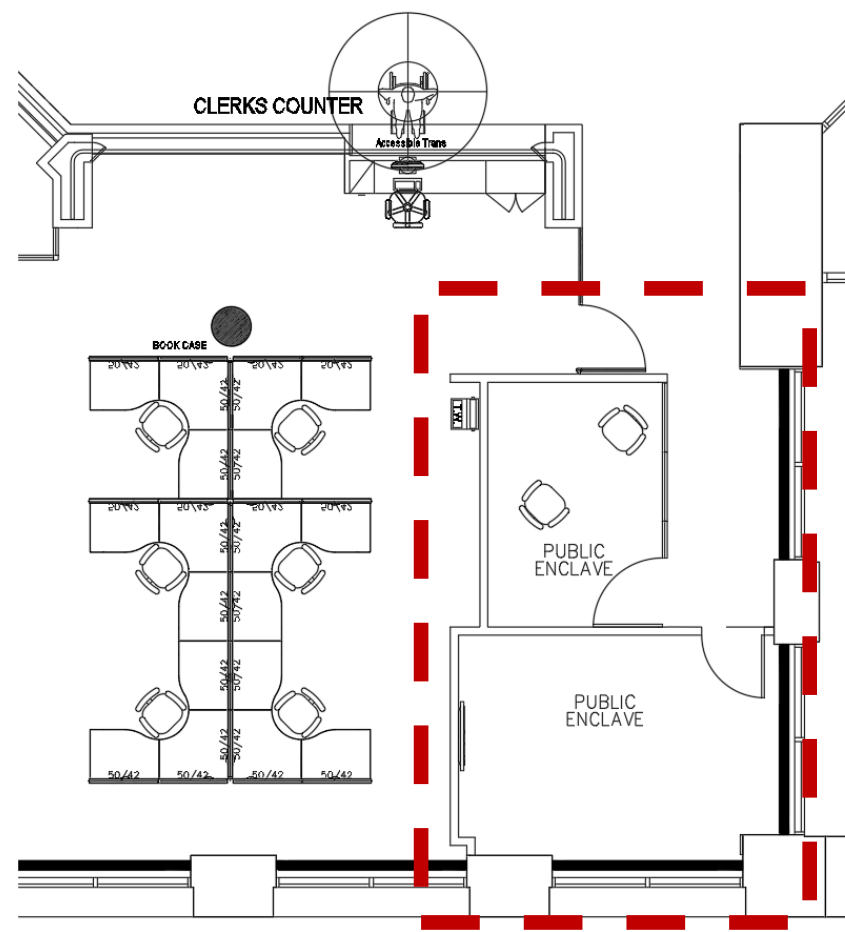
Existing Plan

City Clerks' Counter

The City Clerks' existing counter at City Hall first floor does not meet the needs to support the increase of public services and the space required for staff to operate safely and efficiently. Additional counter assistance is needed, requiring the existing standing counter to be expanded and the accessible counter length reduced.



Proposed Plan



Existing Plan

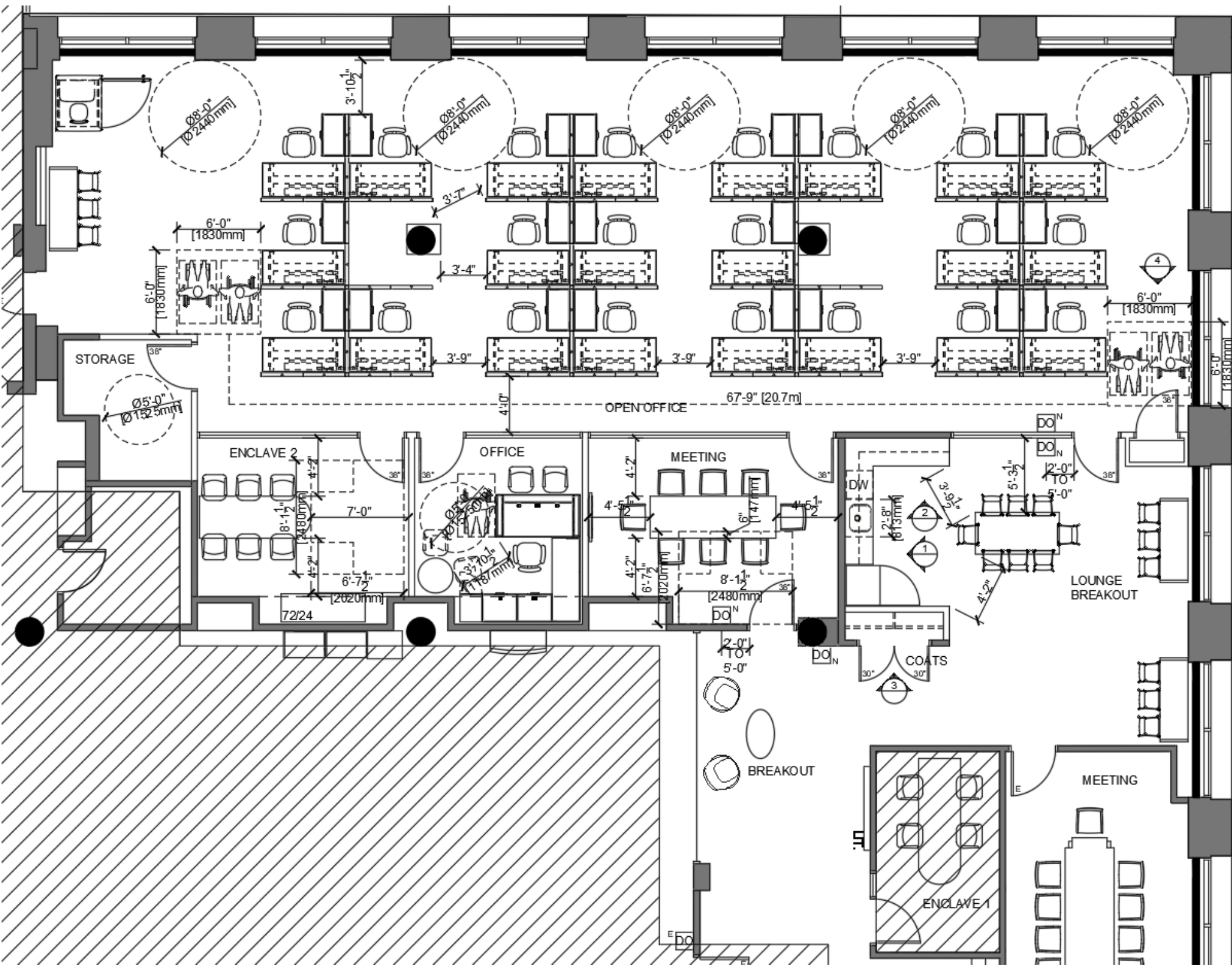
Ceremony Room

The marriage ceremony business has increased. The existing space was designed to be used as an enclave and is not ideal for the ceremonial needs due to limited space. A redesign of the space and expansion of the room is needed to accommodate approximately ten-twelve people with proper seating and a ceremony area.

Project Overview

Ceremony Room

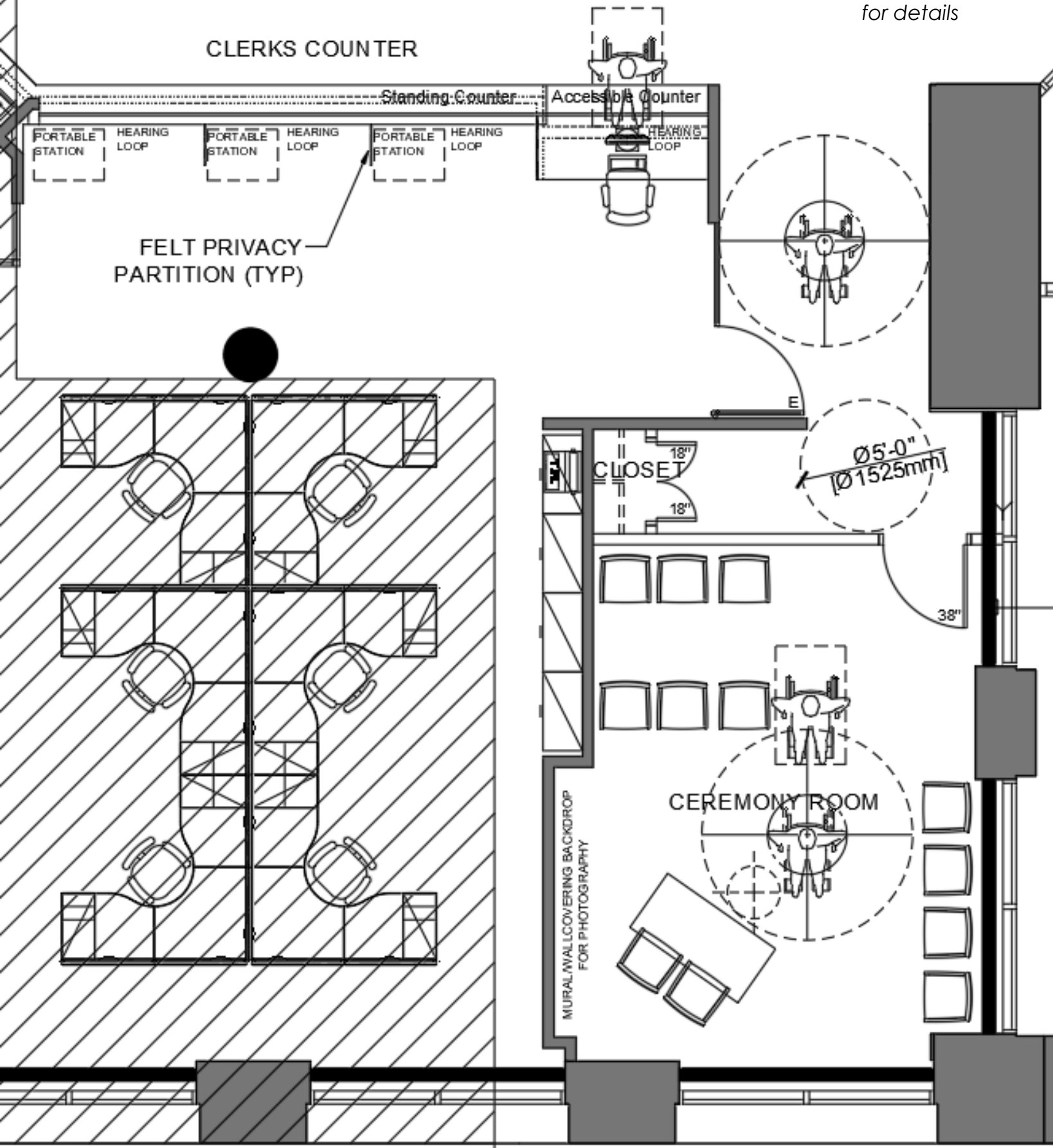
Refer to scaled drawings for details



Accessibility Features

EDO Plan

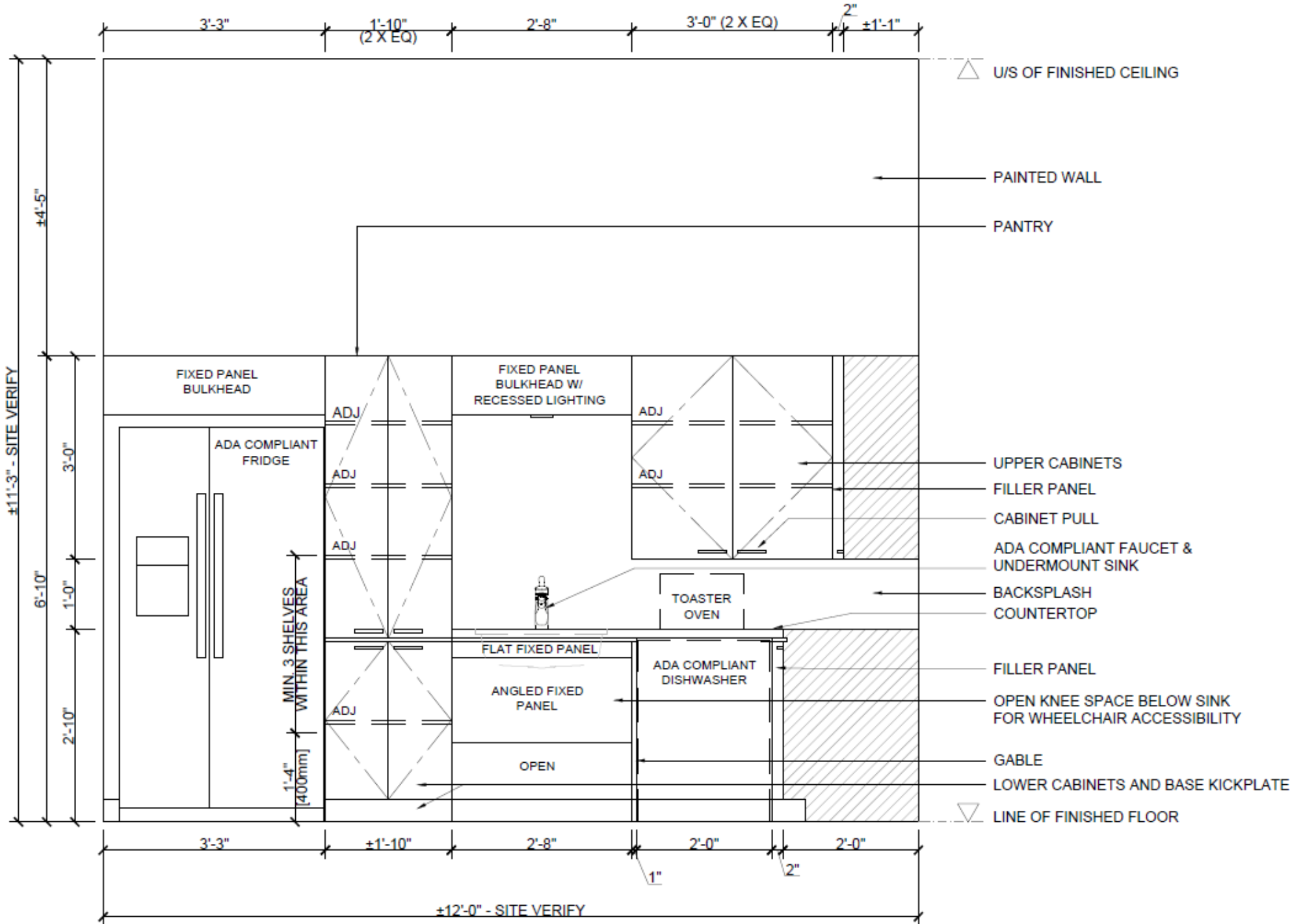
Refer to scaled drawings for details



Accessibility Features

Clerks' Counter & Ceremony Room Plan

Refer to scaled drawings for details

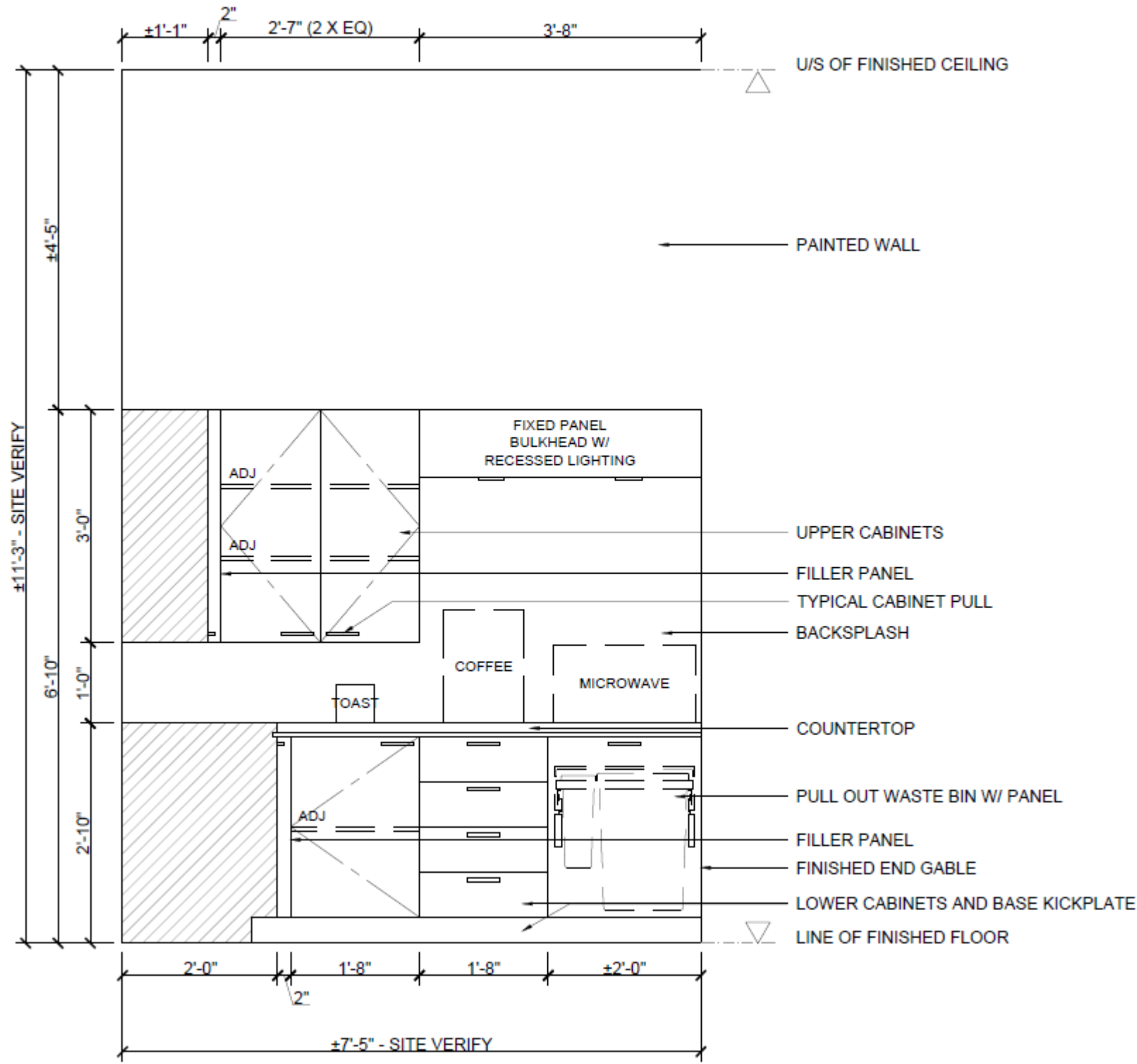


Accessibility Features

EDO Details

ELEVATION 1: Accessible Counter at Pantry

Refer to scaled drawings for details

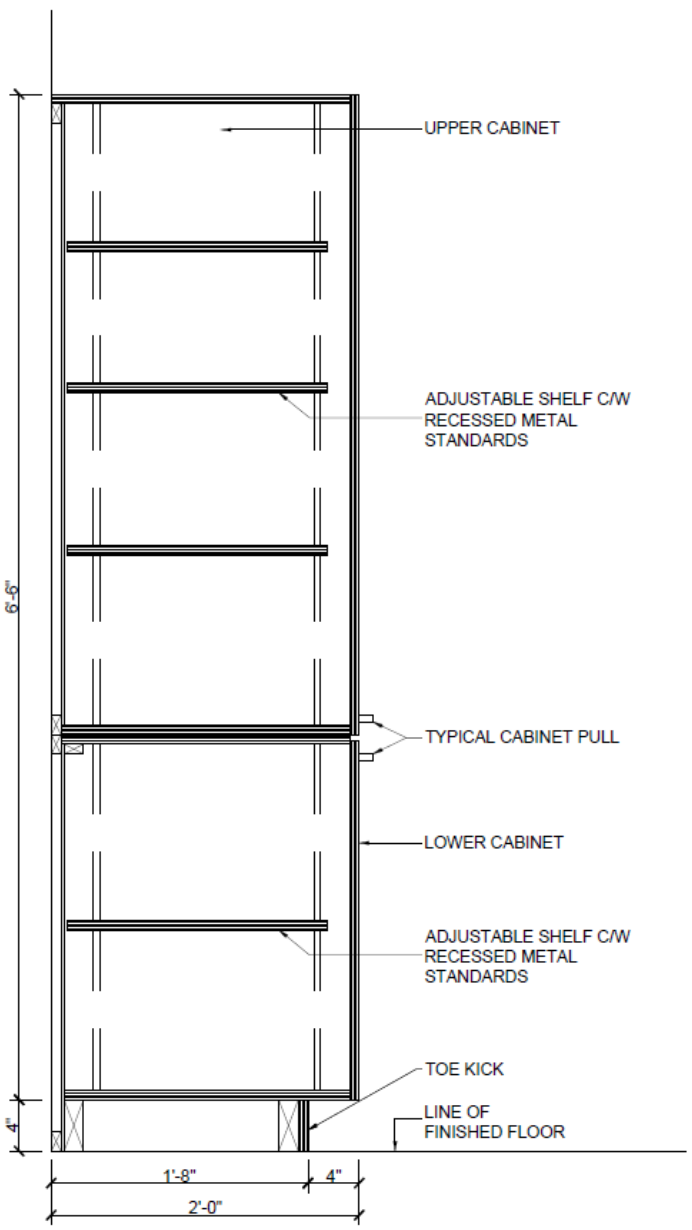


Accessibility Features

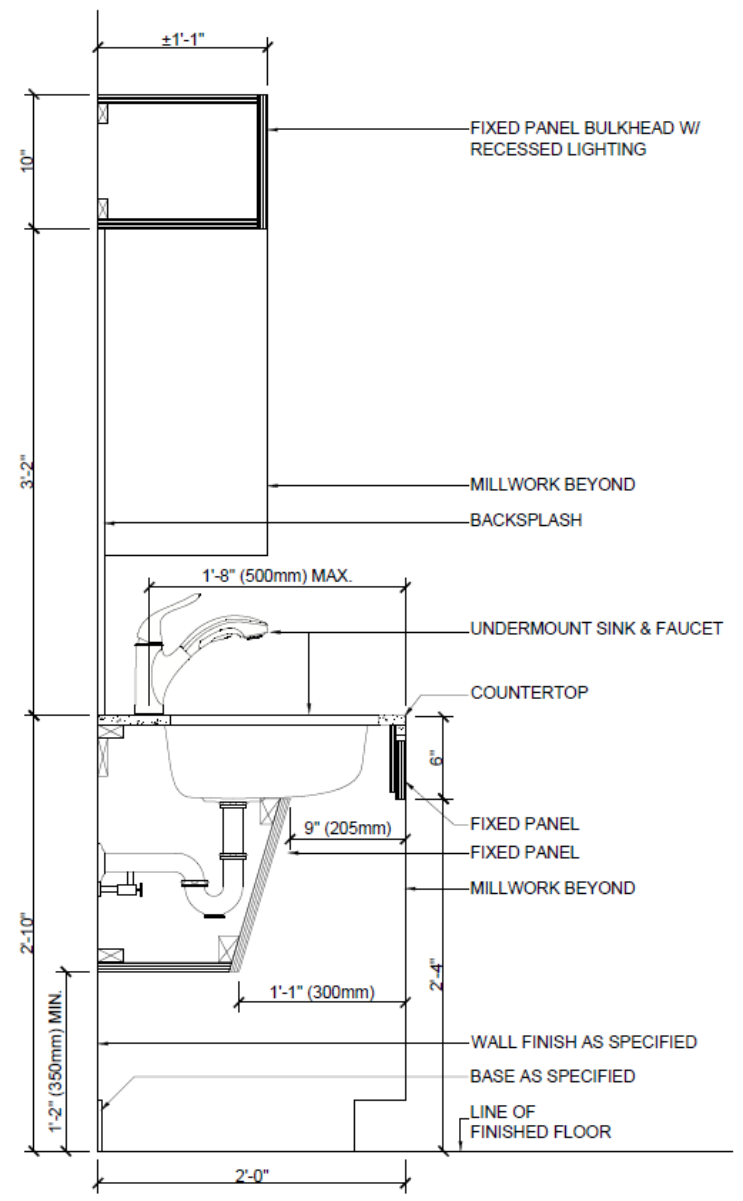
EDO Details

ELEVATION 2: Accessible Counter at Pantry

Refer to scaled drawings for details



SECTION 1: Full Height Storage Cabinet

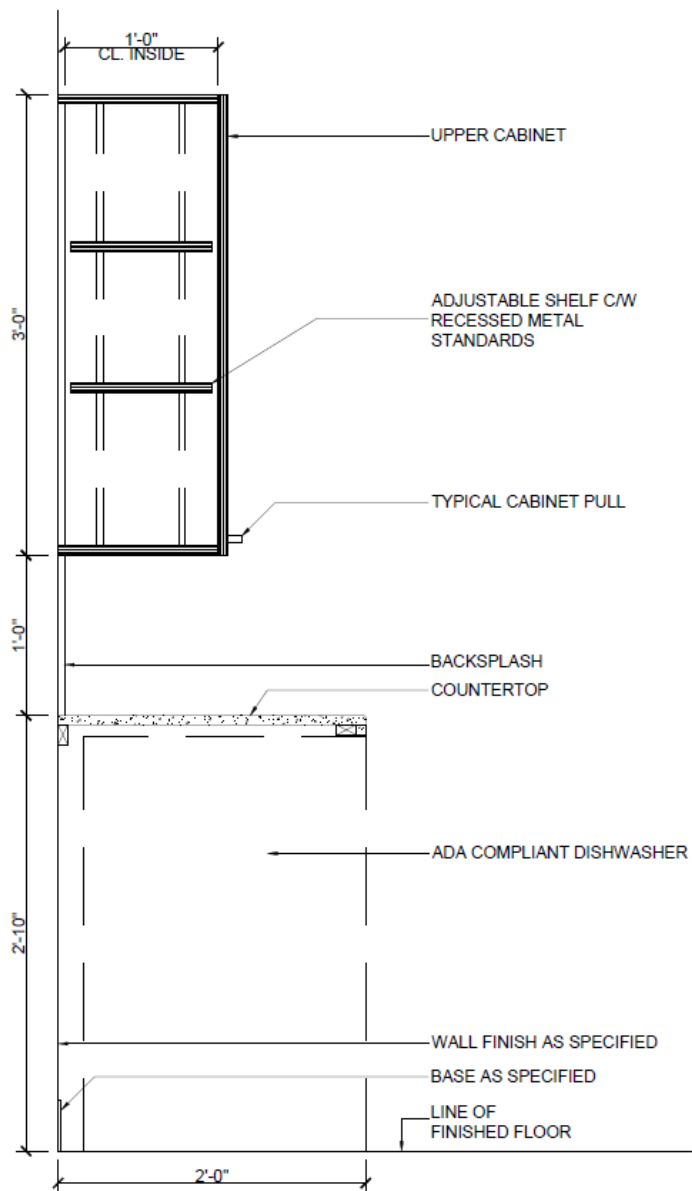


SECTION 2: Sink & Fixed Bulkhead

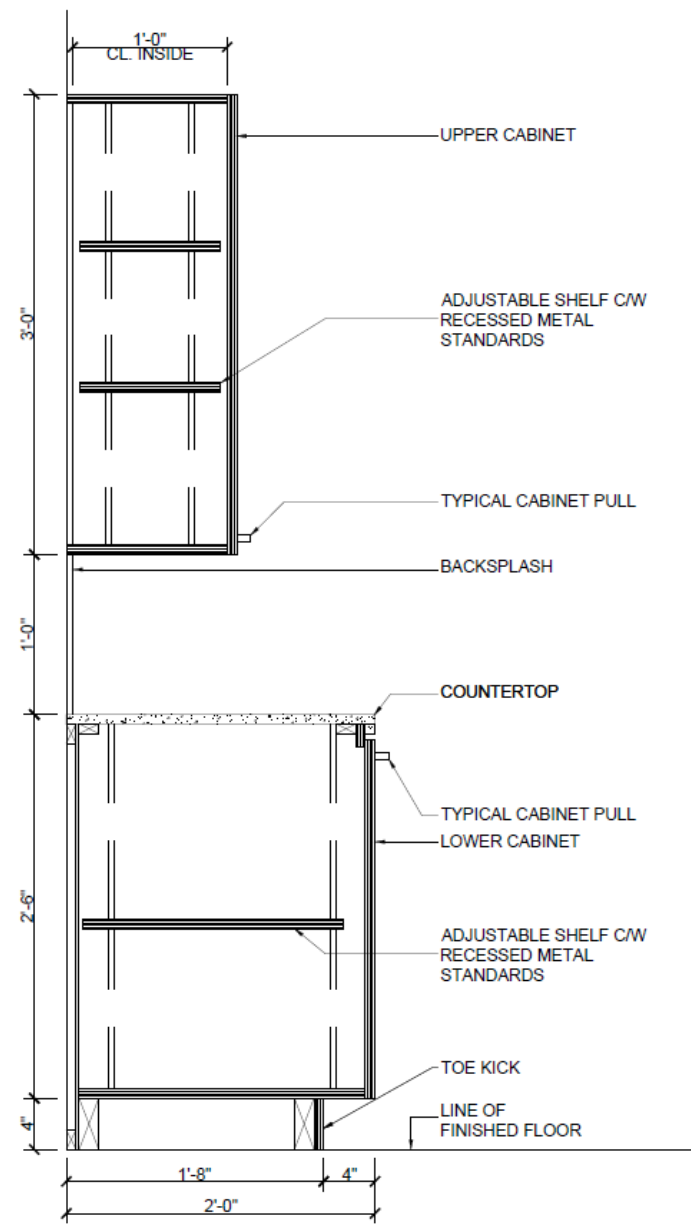
Accessibility Features

EDO Details

Refer to scaled drawings for details



SECTION 3: Upper Cabinets/ Dishwasher

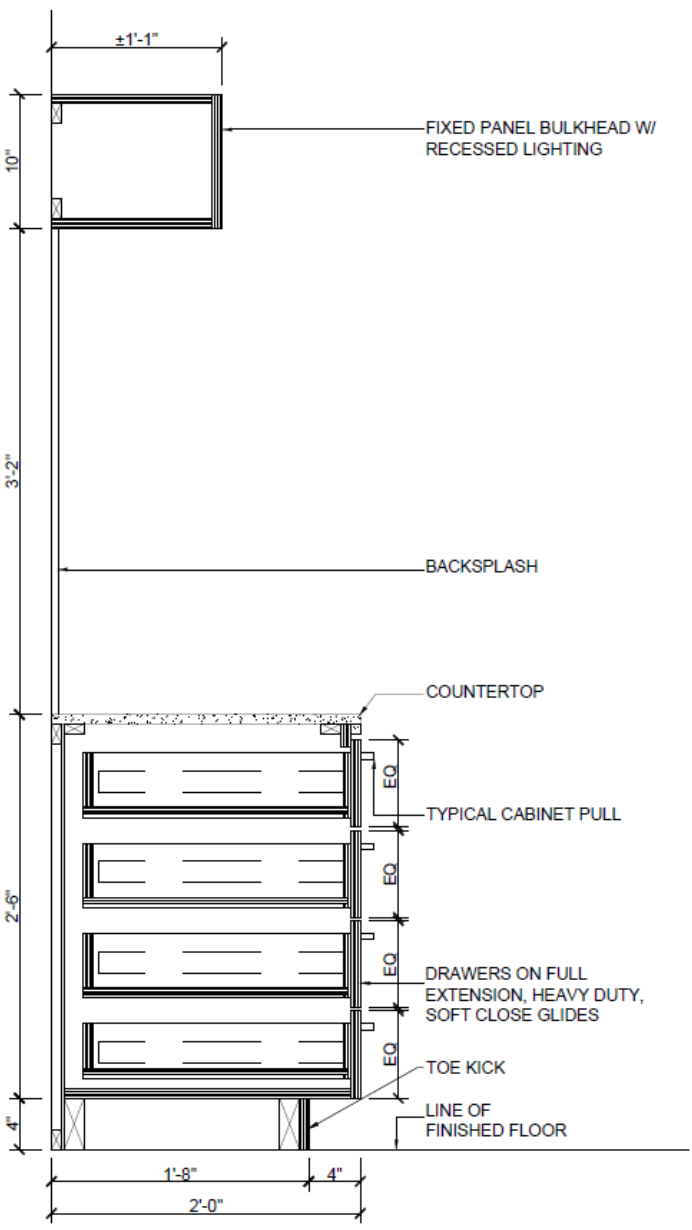


SECTION 4: Upper and Lower Cabinets

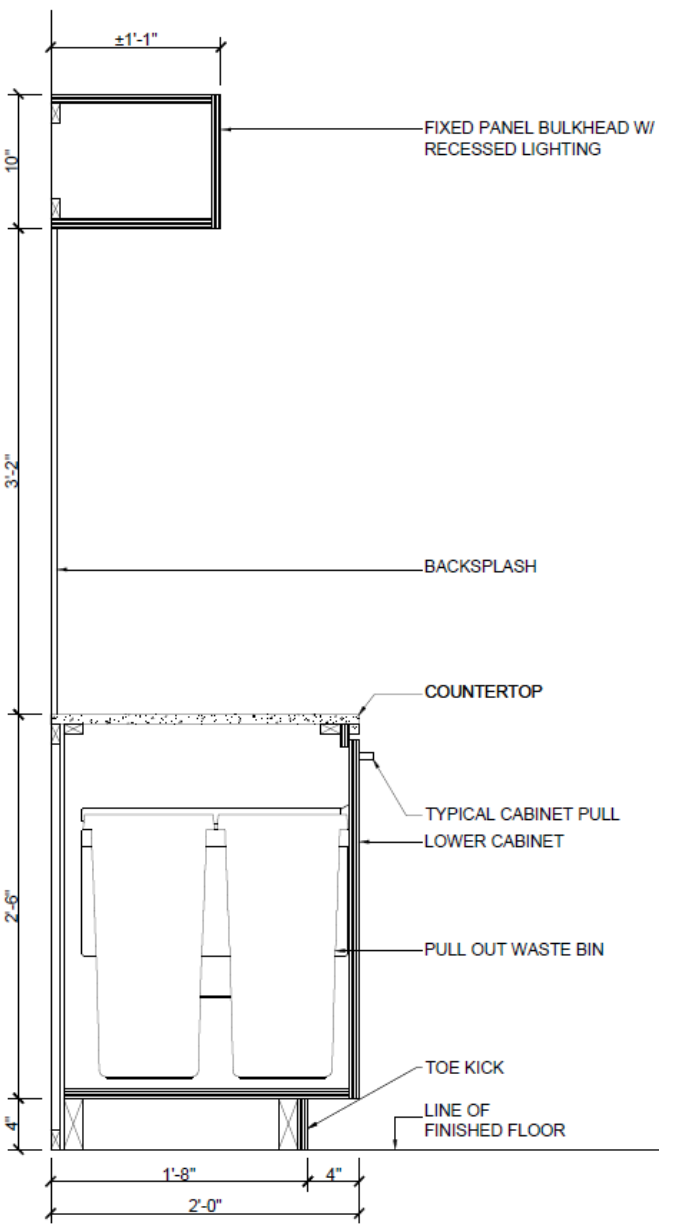
Accessibility Features

EDO Details

Refer to scaled drawings for details



SECTION 5: Bulkhead & Drawers

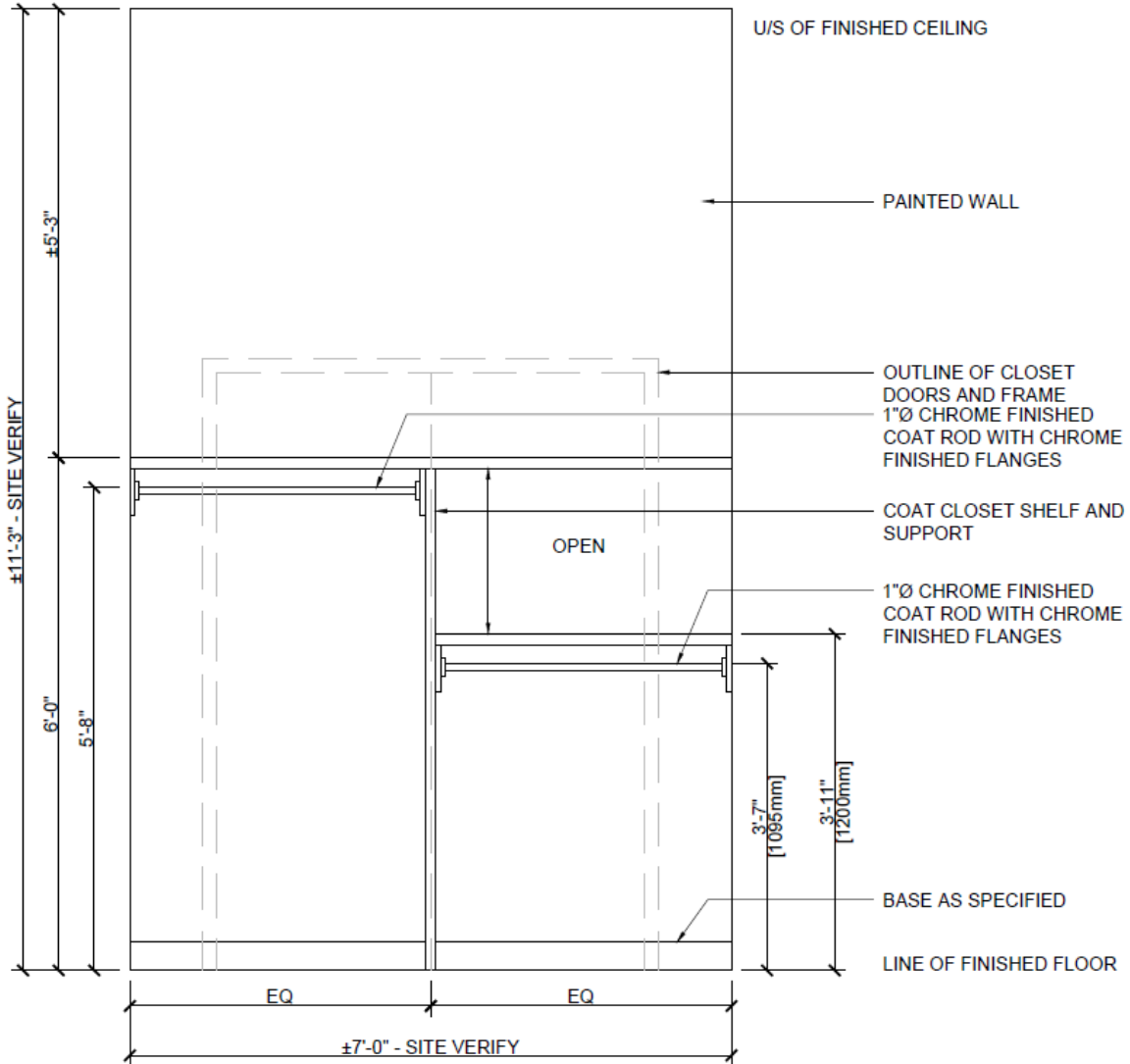


SECTION 6: Bulkhead & Pull Out Waste Station

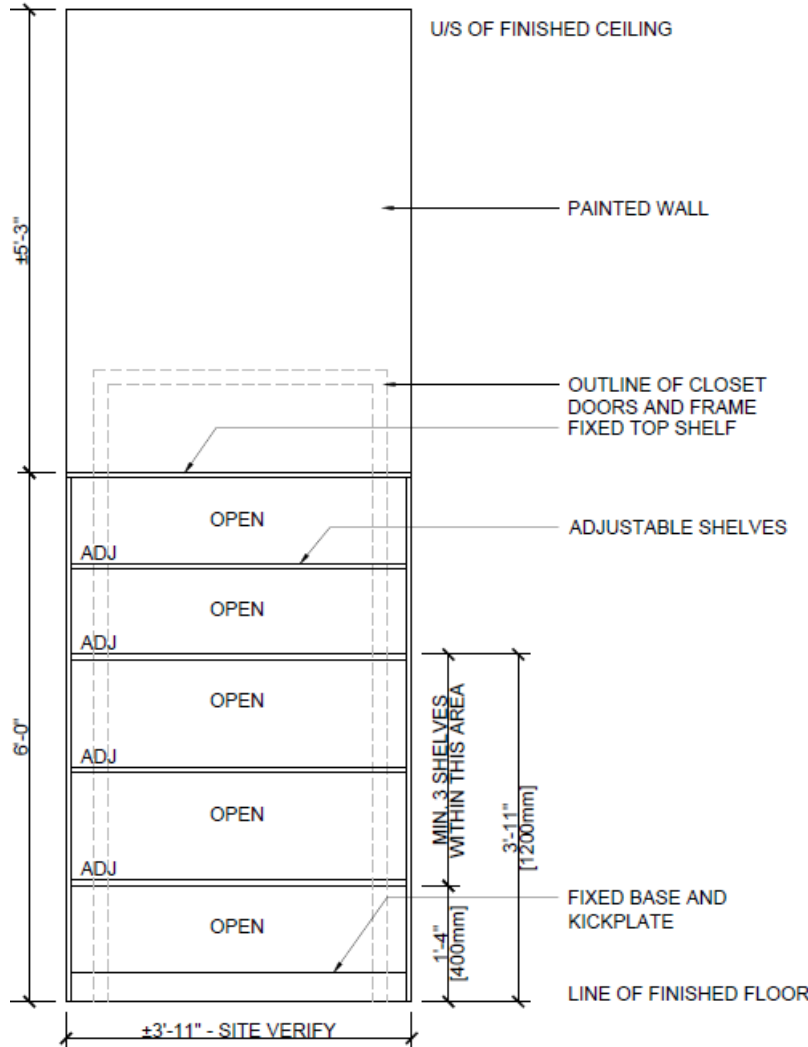
Accessibility Features

EDO Details

Refer to scaled drawings for details



ELEVATION 3: Accessible Coat Closet at EDO Breakout

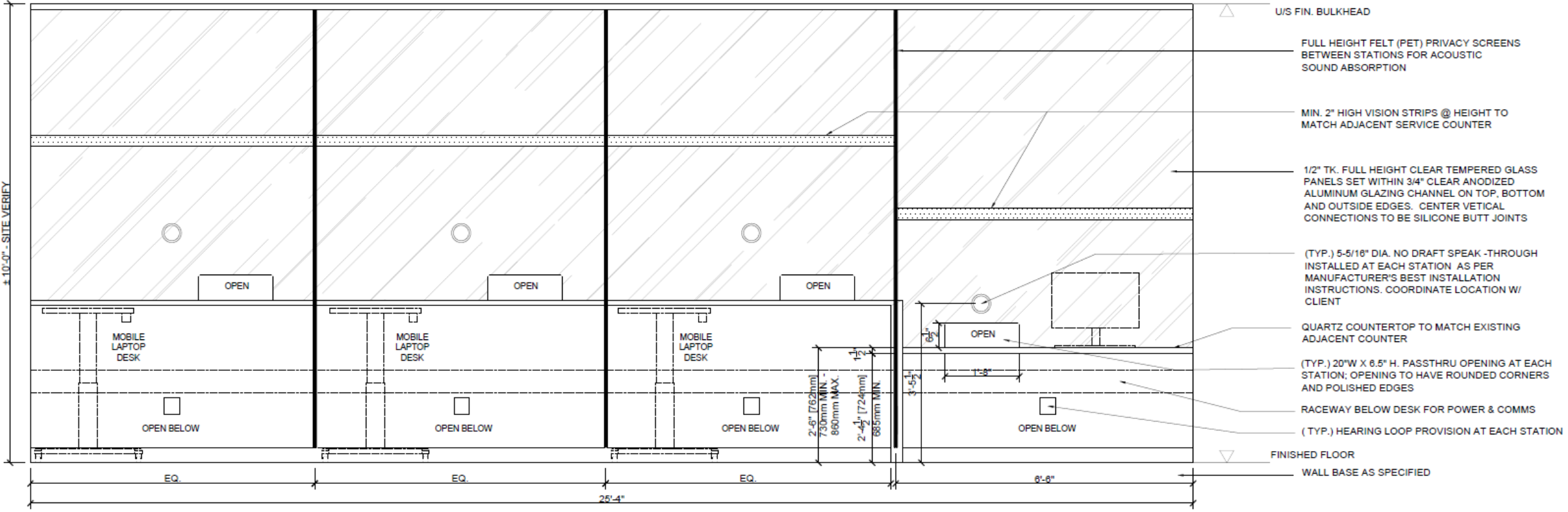


ELEVATION 4: Accessible Closet at EDO Open Office

Accessibility Features

EDO Details

Refer to scaled drawings for details



ELEVATION 5: Accessible Clerks' Counter (Back)

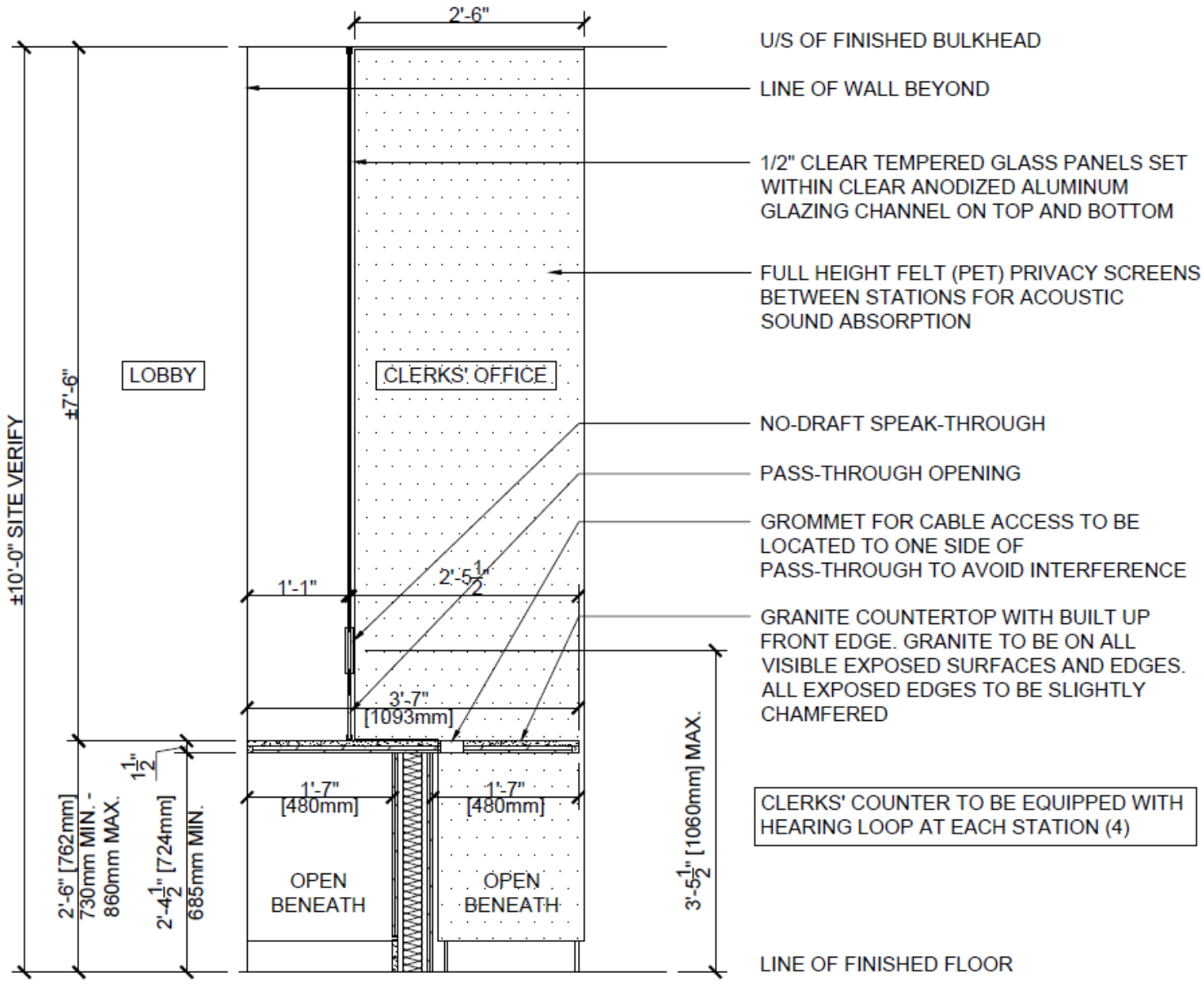
***Finishes of renovated counter to match existing and adjacent*



IMAGE: Existing Clerks' Counter (Front)**

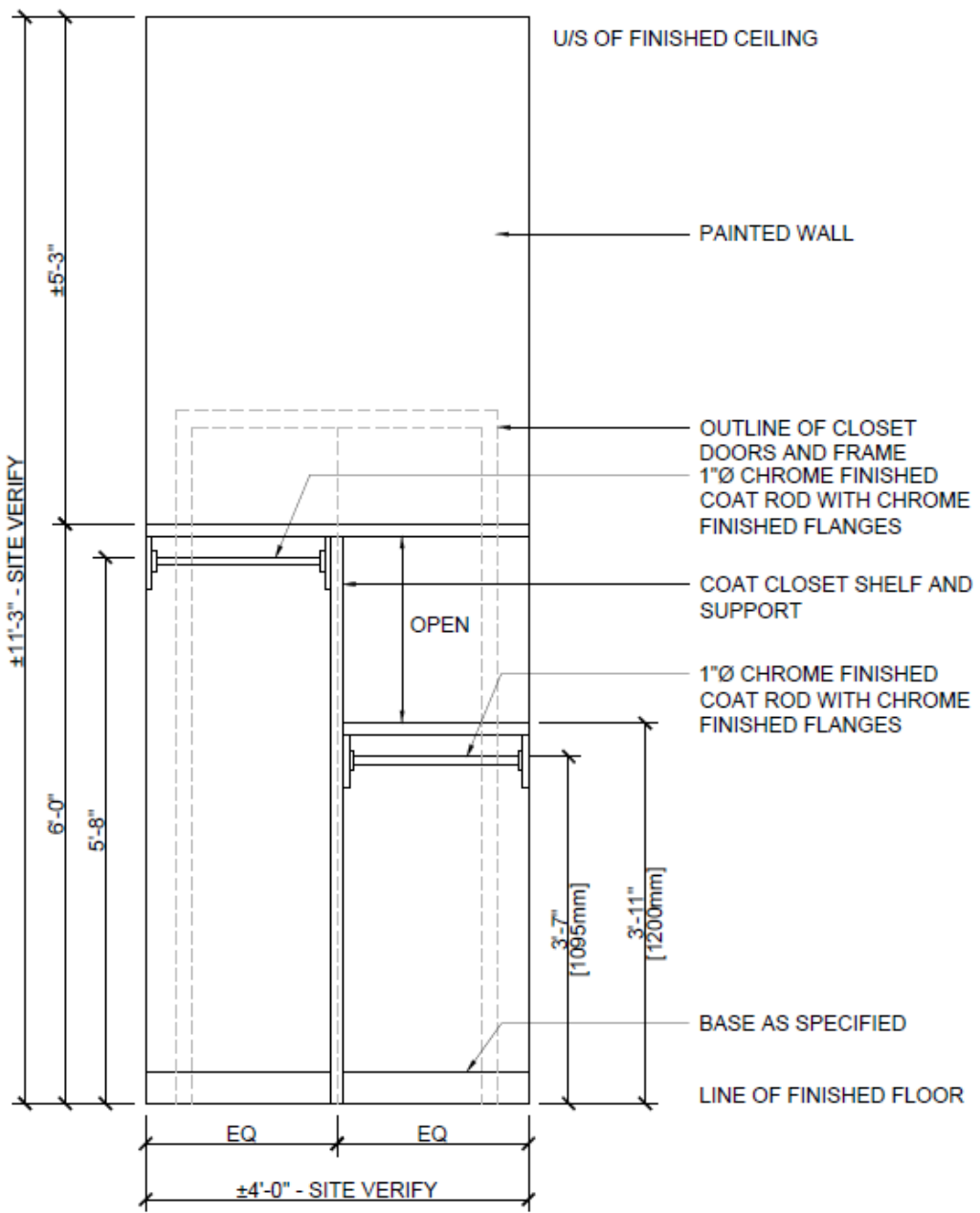
Accessibility Features
Clerks' Counter Details

Refer to scaled drawings for details



SECTION 7: Accessible Clerks' Counter

Refer to scaled drawings for details



ELEVATION 6: Accessible Coat Closet @ Ceremony Room Corridor

This renovation will maintain all existing accessible standards that are in place for the building.

Existing finishes will either be matched, or selected as new based on accessible guidelines for high contrast and texture.

Finishes

- ✓ flooring will consist of level and stable surfaces that are non-slip, even when wet. textures will be avoided to eliminate obstacles for people using assistive devices
- ✓ bright colors or textures will mark changes in level or direction
- ✓ firm, dense carpets will be selected for ease of wheelchair use
- ✓ no reflective surfaces or distracting visual patterns will be used

Paths of Travel

- ✓ open-concept, accessible routes
- ✓ proper clearances and avoidance of tripping hazards
- ✓ power door operators as required for clearance and on all public-facing doors in scope

Lighting

- ✓ balance lighting throughout the room, and eliminate dark corners
- ✓ maximize natural lighting, but avoid glare



Thank You

Infrastructure Interior Design
73a Mutual Street
Toronto ON M5B 2A9

