

12061 Hurontario St., Snelgrove Baptist Church Heritage Permit Application Recommendation Report



Location of the Snelgrove Baptist Church (in Blue) at 12061 Hurontario St



Snelgrove Baptist Church, 2024



Snelgrove Baptist Church, 1994

Building Condition Assessment



Significant deterioration at buttresses due to water ingress



Significant deterioration at buttresses due to water ingress



General condition of foundation wall around basement windows : open joints and incompatible repairs



All mechanical and electrical services on the interior to be disconnected, general condition of interior is fair

Proposed alterations as part of the adopted conservation approach of
“Symbolic conservation and Runinification”



Proposed alterations on North
Elevation

LEGEND:



C101 INFILL FORMER OPENING (WINDOW OR DOOR) WITH MASONRY UNITS, RECESS 1" FROM EXTERIOR FACE OF EXISTING. BRICK CHARACTERISTICS (COLOUR, SIZE, TEXTURE) TO BE CONFIRMED BY HERITAGE CONSULTANT.



C102 REPLACE DAMAGED AND MISSING BRICKS.



C103 REPAIR PARTIALLY COLLAPSED BUTTRESS.

C104 NOT USED.



C105 OPTION 1: PROVIDE PERFORATED STEEL PANEL ON EXTERIOR, FASTENED TO BRICK ON INSIDE OF WINDOW OPENING. OPTION 2: REFER TO C101. REFER TO AH500 FOR DETAILS FOR PRICING.



C302 SAND AND PAINT DOOR AND FRAME.

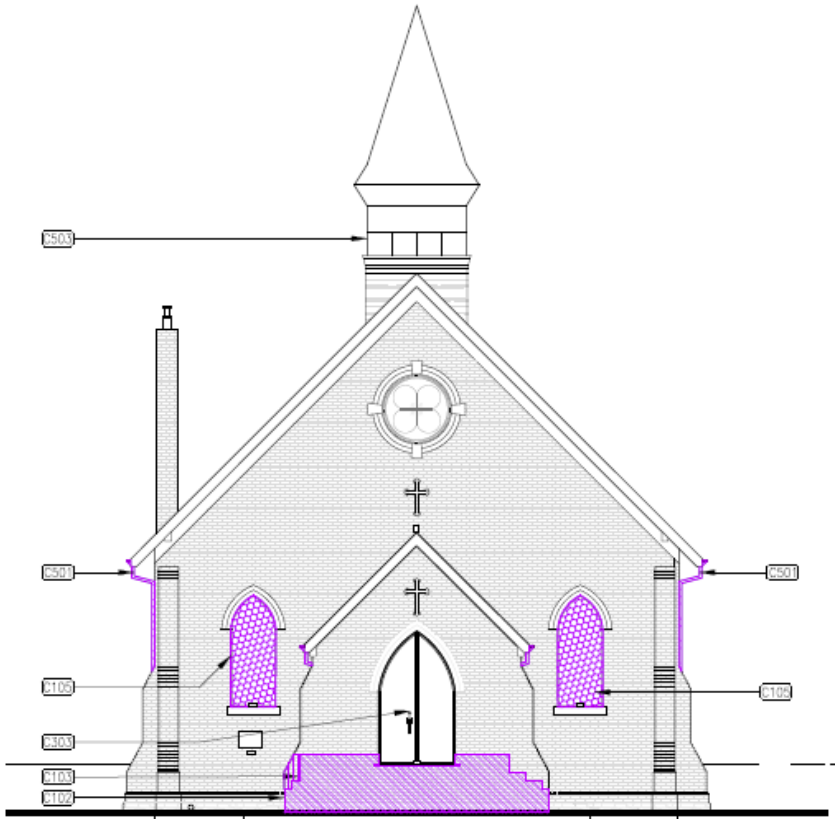
C303 SECURE DOOR FROM INSIDE. TO BE DONE BY OTHERS.



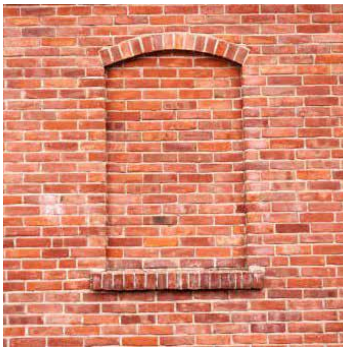
C501 REPAIR EXISTING EAVESTROUGH AND DOWNSPOUTS. REPLACE AS REQUIRED TO ENSURE PROPER AND CONTINUOUS FLOW. DIRECT FLOW AWAY FROM BUILDING AND ITS FOUNDATIONS.

C502 PROVIDE NEW EXTERIOR LIGHTING. SEE LIGHTING PLAN.

C503 PROVIDE STAINLESS STEEL FRAME 'GHOST' TOWER.



Proposed alterations on West
Elevation



Example of blind window



Example of metal screen

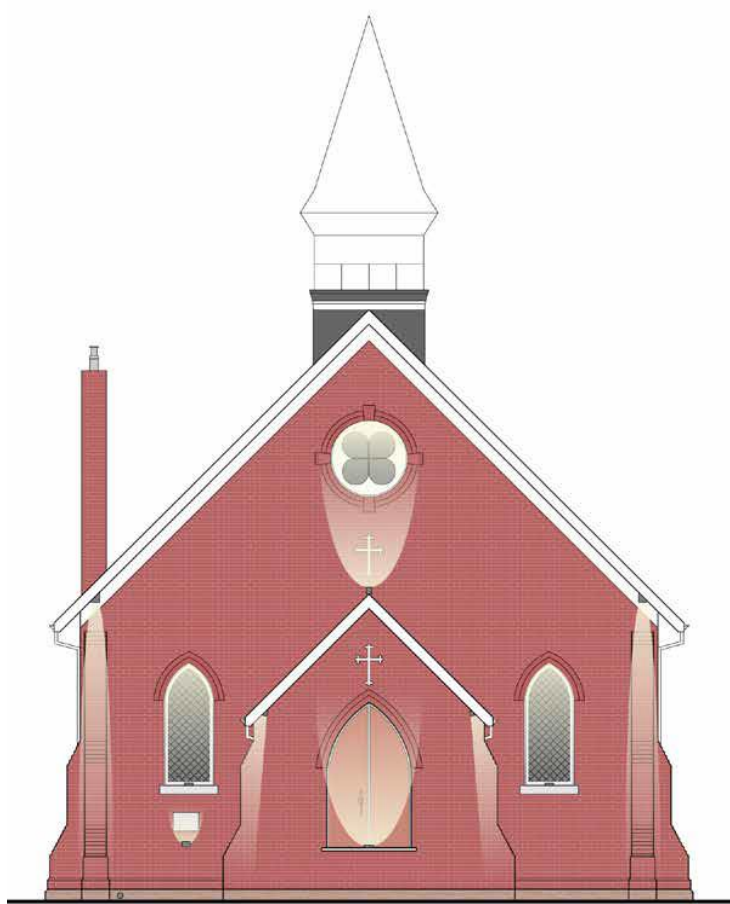


Example of commemorative bell tower

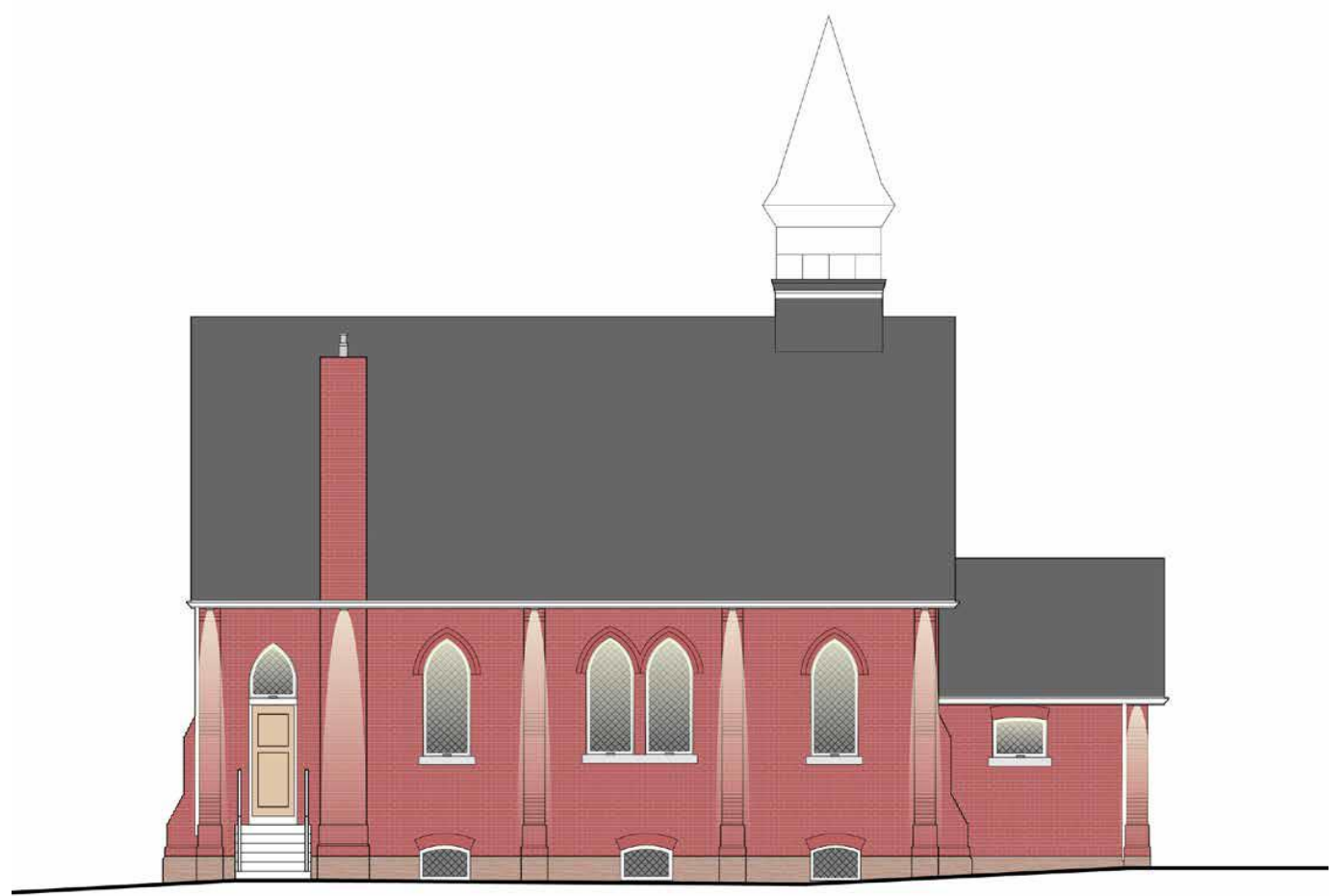


Example of ghost bell tower

Proposed Lighting Plan



Conceptual lighting plan, west elevation



Conceptual lighting plan, north elevation