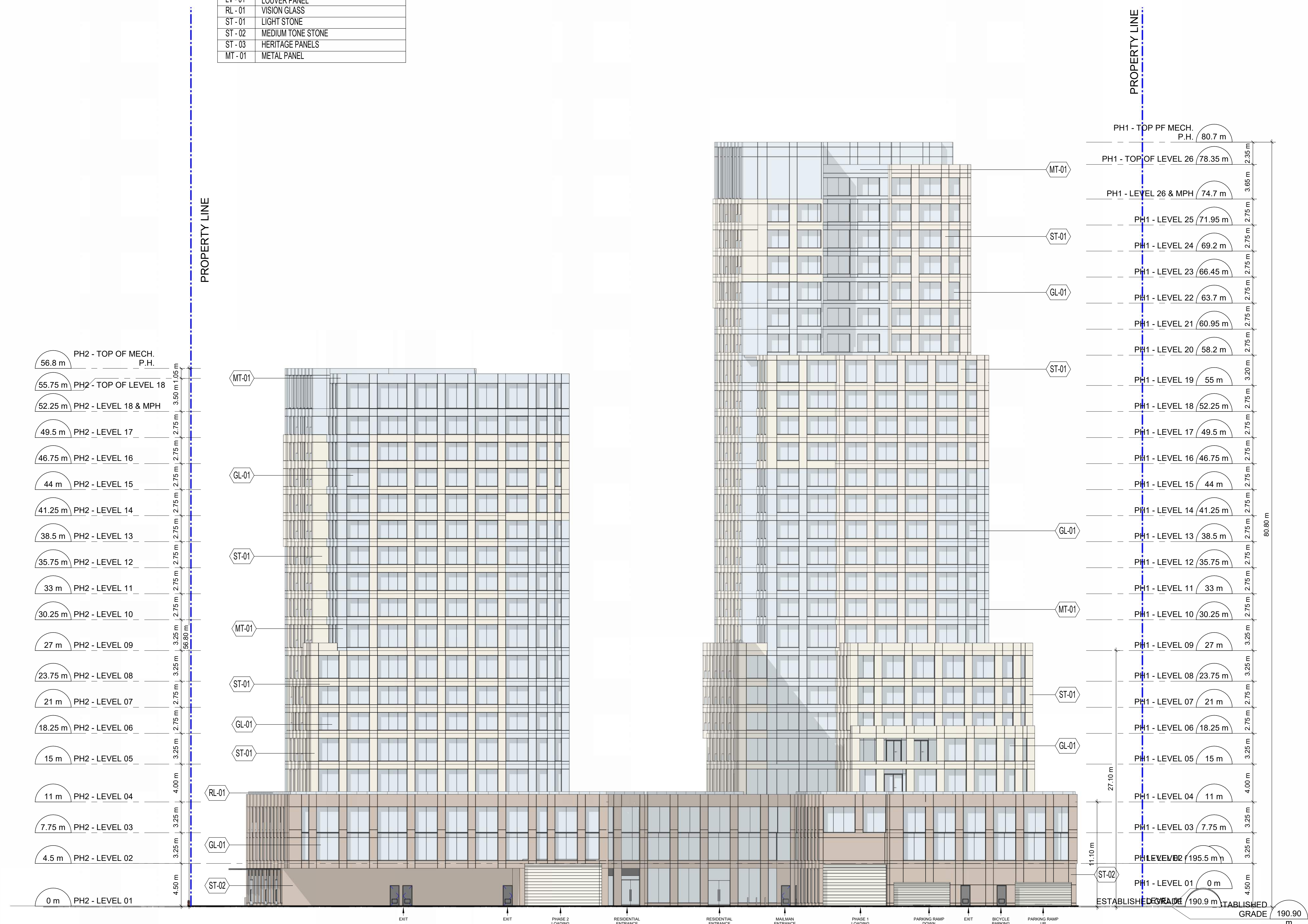


MATERIAL LEGEND

GL-01	VISION GLASS
SP-01	SPANDREL PANEL - LIGHT
SP-02	SPANDREL PANEL - CHARCOAL
LV-01	LOUVER PANEL
RL-01	VISION GLASS
ST-01	LIGHT STONE
ST-02	MEDIUM TONE STONE
ST-03	HERITAGE PANELS
MT-01	METAL PANEL



56.8 m	PH2 - TOP OF MECH. P.H.
55.75 m	PH2 - TOP OF LEVEL 18
52.25 m	PH2 - LEVEL 18 & MPH
49.5 m	PH2 - LEVEL 17
46.75 m	PH2 - LEVEL 16
44 m	PH2 - LEVEL 15
41.25 m	PH2 - LEVEL 14
38.5 m	PH2 - LEVEL 13
35.75 m	PH2 - LEVEL 12
33 m	PH2 - LEVEL 11
30.25 m	PH2 - LEVEL 10
27 m	PH2 - LEVEL 09
23.75 m	PH2 - LEVEL 08
21 m	PH2 - LEVEL 07
18.25 m	PH2 - LEVEL 06
15 m	PH2 - LEVEL 05
11 m	PH2 - LEVEL 04
7.75 m	PH2 - LEVEL 03
4.5 m	PH2 - LEVEL 02
0 m	PH2 - LEVEL 01

80.7 m	PH1 - TOP PF MECH. P.H.
78.35 m	PH1 - TOP OF LEVEL 26
74.7 m	PH1 - LEVEL 26 & MPH
71.95 m	PH1 - LEVEL 25
69.2 m	PH1 - LEVEL 24
66.45 m	PH1 - LEVEL 23
63.7 m	PH1 - LEVEL 22
60.95 m	PH1 - LEVEL 21
58.2 m	PH1 - LEVEL 20
55 m	PH1 - LEVEL 19
52.25 m	PH1 - LEVEL 18
49.5 m	PH1 - LEVEL 17
46.75 m	PH1 - LEVEL 16
44 m	PH1 - LEVEL 15
41.25 m	PH1 - LEVEL 14
38.5 m	PH1 - LEVEL 13
35.75 m	PH1 - LEVEL 12
33 m	PH1 - LEVEL 11
30.25 m	PH1 - LEVEL 10
27 m	PH1 - LEVEL 09
23.75 m	PH1 - LEVEL 08
21 m	PH1 - LEVEL 07
18.25 m	PH1 - LEVEL 06
15 m	PH1 - LEVEL 05
11 m	PH1 - LEVEL 04
7.75 m	PH1 - LEVEL 03
195.5 m	PH1 - LEVEL 02
0 m	PH1 - LEVEL 01

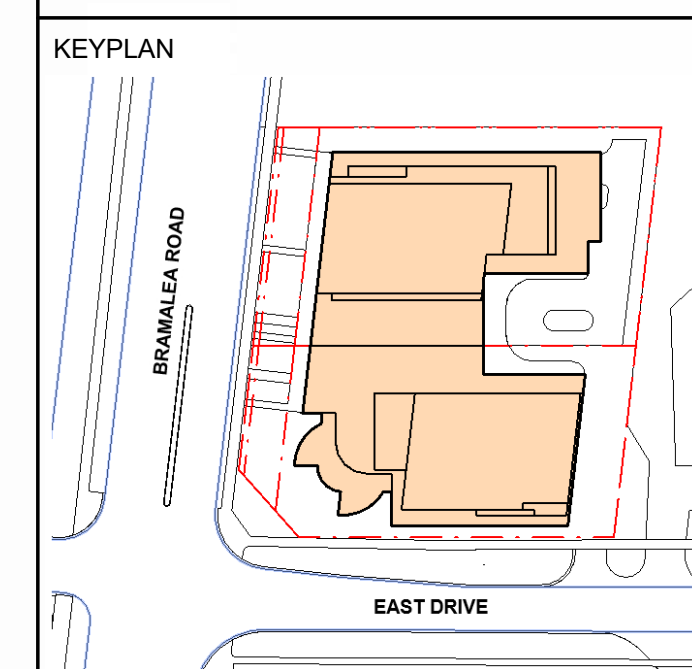
CLIENT



COPYRIGHT
This drawing has been prepared solely for the intended use. Any reproduction or distribution for any purpose other than authorized by Arcadis Architects is prohibited. Written dimensions shall have precedence over scaled dimensions. Contractors shall verify and be responsible for all dimensions and conditions on the job, and Arcadis Architects shall be informed of any variations from the dimensions and conditions shown on the drawing. Shop drawings shall be submitted to Arcadis Architects for general conformance before proceeding with fabrication.
Arcadis Architects (Canada) Inc.

ISSUES	DESCRIPTION	DATE
1	OPA/ZBA SUBMISSION	May 26, 2023
2	OPA/ZBA RESUBMISSION	January 12, 2024
3	OPA/ZBA RESUBMISSION	December 10, 2024

NOTES



SEAL



PROJECT
69 BRAMALEA
69 Bramalea Road
Brampton, Ontario

PROJECT NO: 108558
DRAWN BY: Author
PROJECT MGR: Designer
CHECKED BY: Checker
APPROVED BY: Approver

SHEET TITLE
EAST ELEVATION

SHEET NUMBER A-301 **ISSUE** 3

2024-12-09 5:07:23 PM

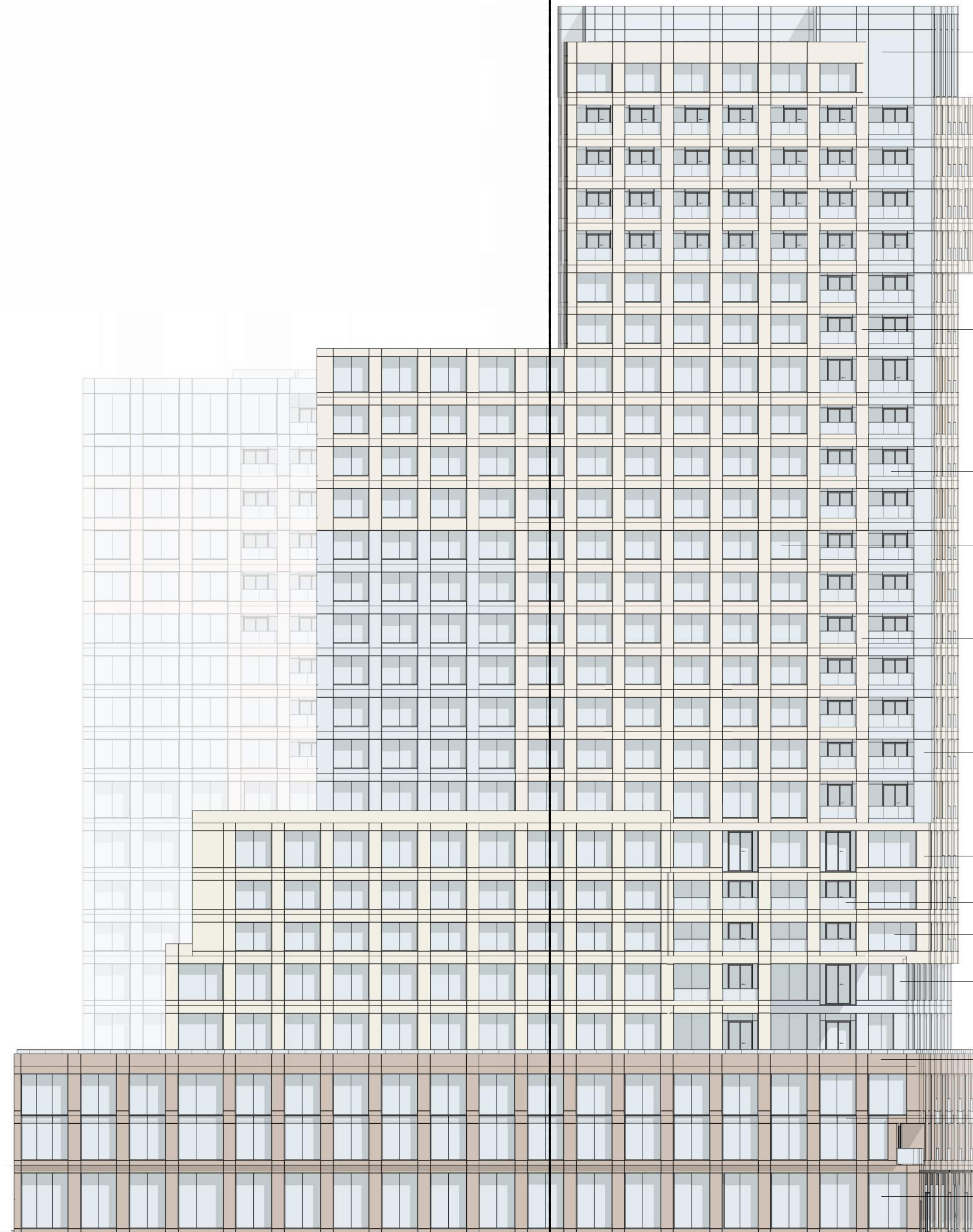
1 EAST ELEVATION
A-301 Scale: 1 : 200

C:\Users\alimohab877\OneDrive - ARCADIS\Documents\69BRAMALEA\PH1-PCDD\IM-R22_26-18st_Imoona.alimohammad_1AMZSABWAE5MU.rvt

MATERIAL LEGEND

GL - 01	VISION GLASS
SP - 01	SPANDREL PANEL - LIGHT
SP - 02	SPANDREL PANEL - CHARCOAL
LV - 01	LOUVER PANEL
RL - 01	VISION GLASS
ST - 01	LIGHT STONE
ST - 02	MEDIUM TONE STONE
ST - 03	HERITAGE PANELS
MT - 01	METAL PANEL

PROPERTY LINE



CONVEYANCE LINE

BRAMALEA ROAD WIDENING

PROPERTY LINE

PH1 - TOP PF MECH. P.H. 80.7 m

PH1 - TOP OF LEVEL 26 78.35 m

PH1 - LEVEL 26 & MPH 74.7 m

PH1 - LEVEL 25 71.95 m

PH1 - LEVEL 24 69.2 m

PH1 - LEVEL 23 66.45 m

PH1 - LEVEL 22 63.7 m

PH1 - LEVEL 21 60.95 m

PH1 - LEVEL 20 58.2 m

PH1 - LEVEL 19 55 m

PH1 - LEVEL 18 52.25 m

PH1 - LEVEL 17 49.5 m

PH1 - LEVEL 16 46.75 m

PH1 - LEVEL 15 44 m

PH1 - LEVEL 14 41.25 m

PH1 - LEVEL 13 38.5 m

PH1 - LEVEL 12 35.75 m

PH1 - LEVEL 11 33 m

PH1 - LEVEL 10 30.25 m

PH1 - LEVEL 09 27 m

PH1 - LEVEL 08 23.75 m

PH1 - LEVEL 07 21 m

PH1 - LEVEL 06 18.25 m

PH1 - LEVEL 05 15 m

PH1 - LEVEL 04 11 m

PH1 - LEVEL 03 7.75 m

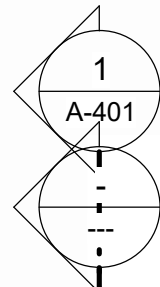
PH1 - LEVEL 02 195.5 m

PH1 - LEVEL 01 0 m

ESTABLISHED GRADE 190.9 m

80.80 m

190.90 m



CLIENT

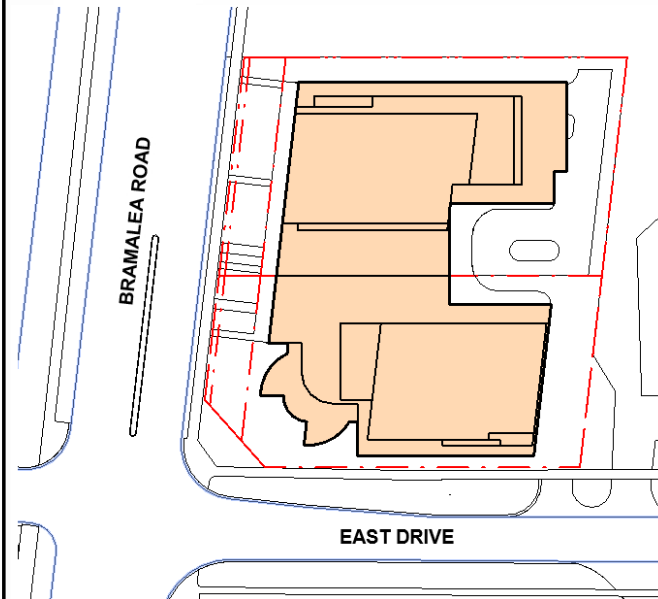


COPYRIGHT
This drawing has been prepared solely for the intended use. Any reproduction or distribution for any purpose other than authorized by Arcadis Architects Inc. is prohibited. Written dimensions shall have precedence over scaled dimensions. Contractors shall verify and be responsible for all dimensions and conditions on the job, and Arcadis Architects shall be informed of any variations from the dimensions and conditions shown on the drawing. Shop drawings shall be submitted to Arcadis Architects for general conformance before proceeding with fabrication.
Arcadis Architects (Canada) Inc.

ISSUES	DESCRIPTION	DATE
1	OPA/ZBA SUBMISSION	May 26, 2023
2	OPA/ZBA RESUBMISSION	January 12, 2024
3	OPA/ZBA RESUBMISSION	December 10, 2024

NOTES

KEYPLAN



SEAL

ARCADIS
ARCADIS ARCHITECTS (CANADA) INC.
55 St. Clair Avenue West | 7th Floor
Toronto | ON | M4V 2Y7 | Canada
T 416 596 1930 | F 416 596 0644
www.arcadis.com

PROJECT
69 BRAMALEA
69 Bramalea Road
Brampton, Ontario

PROJECT NO:
108558
DRAWN BY:
Author
PROJECT MGR:
Designer
CHECKED BY:
Checker
APPROVED BY:
Approver

SHEET TITLE
NORTH ELEVATION

SHEET NUMBER
A-302
ISSUE
3

2024-12-09 5:08:09 PM

1 NORTH ELEVATION
A-302 Scale: 1 : 200

C:\Users\alimohab877\OneDrive - ARCADIS\Documents\69BRAMALEA\A-PH1-PCD\IM-R22_26-18st_18moa_alimohammad_1AMZSABWAE5MU.rvt

MATERIAL LEGEND

GL - 01	VISION GLASS
SP - 01	SPANDREL PANEL - LIGHT
SP - 02	SPANDREL PANEL - CHARCOAL
LV - 01	LOUVER PANEL
RL - 01	VISION GLASS
ST - 01	LIGHT STONE
ST - 02	MEDIUM TONE STONE
ST - 03	HERITAGE PANELS
MT - 01	METAL PANEL

CLIENT

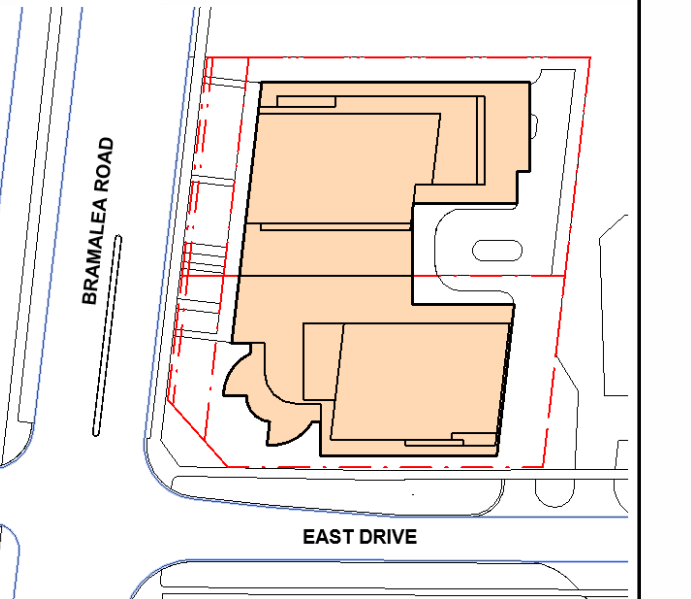


COPYRIGHT
This drawing has been prepared solely for the intended use. No reproduction or distribution for any purpose other than authorized by Arcadis Architects is permitted. Written dimensions shall have precedence over scaled dimensions. Contractors shall verify and be responsible for all dimensions and conditions on the job, and Arcadis Architects shall be informed of any variations from the dimensions and conditions shown on the drawing. Shop drawings shall be submitted to Arcadis Architects for general conformance before proceeding with fabrication.
Arcadis Architects (Canada) Inc.

ISSUES No.	DESCRIPTION	DATE
1	OPA/ZBA SUBMISSION	May 26, 2023
2	OPA/ZBA RESUBMISSION	January 12, 2024
3	OPA/ZBA RESUBMISSION	December 10, 2024

NOTES

KEYPLAN



SEAL

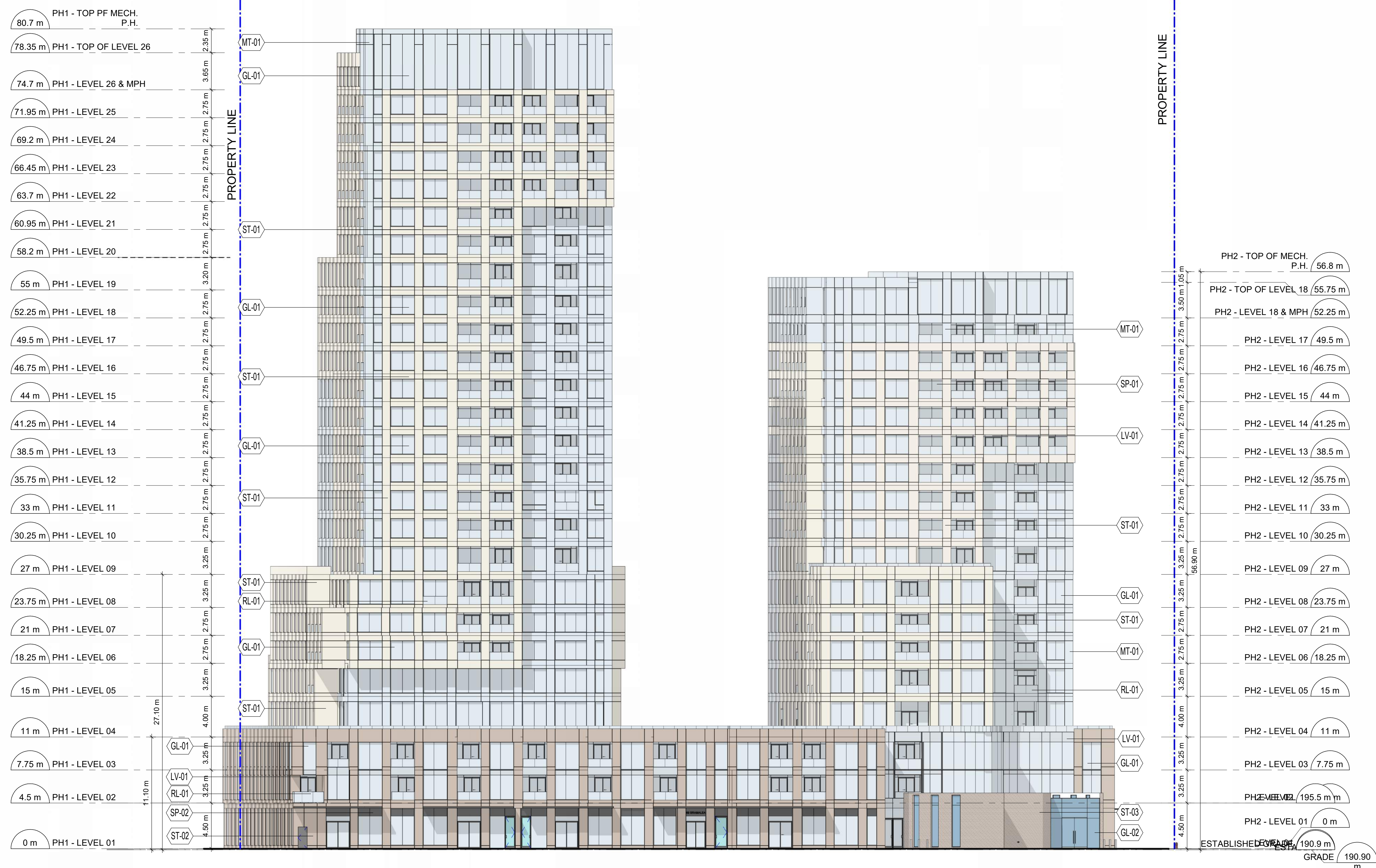


PROJECT
69 BRAMALEA
69 Bramalea Road
Brampton, Ontario

PROJECT NO:
108558
DRAWN BY:
Author
PROJECT MGR:
Designer
CHECKED BY:
Checker
APPROVED BY:
Approver

SHEET TITLE
WEST ELEVATION

SHEET NUMBER
A-303
ISSUE
3



1 WEST ELEVATION
A-303 Scale: 1 : 200

2024-12-09 5:08:58 PM

C:\Users\alimohab877\OneDrive - ARCADIS\Documents\69BRAMALEA\PH1-PCDD\IM-R22_26-1864_Imoona.alimohammad_HMZSABWAE5MU.nt

2024-12-09 5:09:36 PM

A-304

MATERIAL LEGEND

GL - 01	VISION GLASS
SP - 01	SPANDREL PANEL - LIGHT
SP - 02	SPANDREL PANEL - CHARCOAL
LV - 01	LOUVER PANEL
RL - 01	VISION GLASS
ST - 01	LIGHT STONE
ST - 02	MEDIUM TONE STONE
ST - 03	HERITAGE PANELS
MT - 01	METAL PANEL

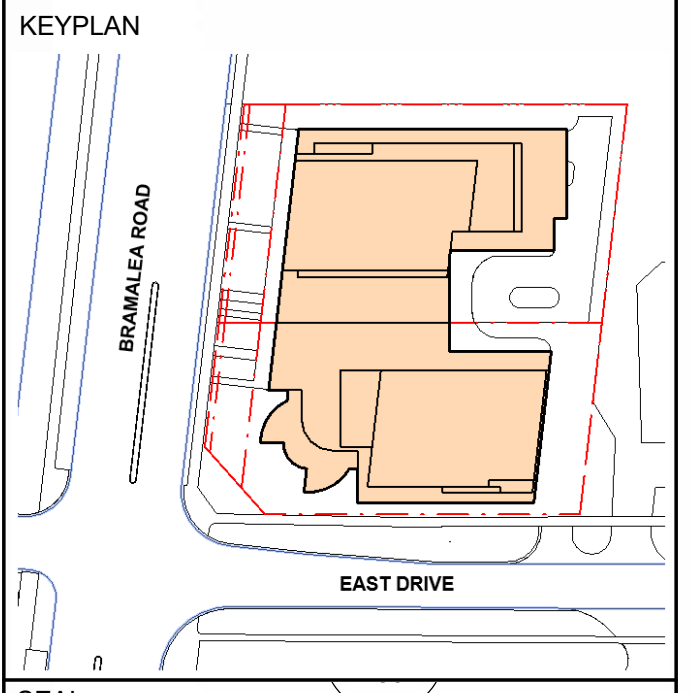


COPYRIGHT
 This drawing has been prepared solely for the intended use. Any reproduction or distribution for any purpose other than authorized by Arcadis Architects Inc. is prohibited. Written dimensions shall have precedence over scaled dimensions. Contractors shall verify and be responsible for all dimensions and conditions on the job, and Arcadis Architects shall be informed of any variations from the dimensions and conditions shown on the drawing. Shop drawings shall be submitted to Arcadis Architects for general conformance before proceeding with fabrication.
 Arcadis Architects (Canada) Inc.

ISSUES

No.	DESCRIPTION	DATE
1	OPA/ZBA SUBMISSION	May 26, 2023
2	OPA/ZBA RESUBMISSION	January 12, 2024
3	OPA/ZBA RESUBMISSION	December 10, 2024

NOTES



SEAL



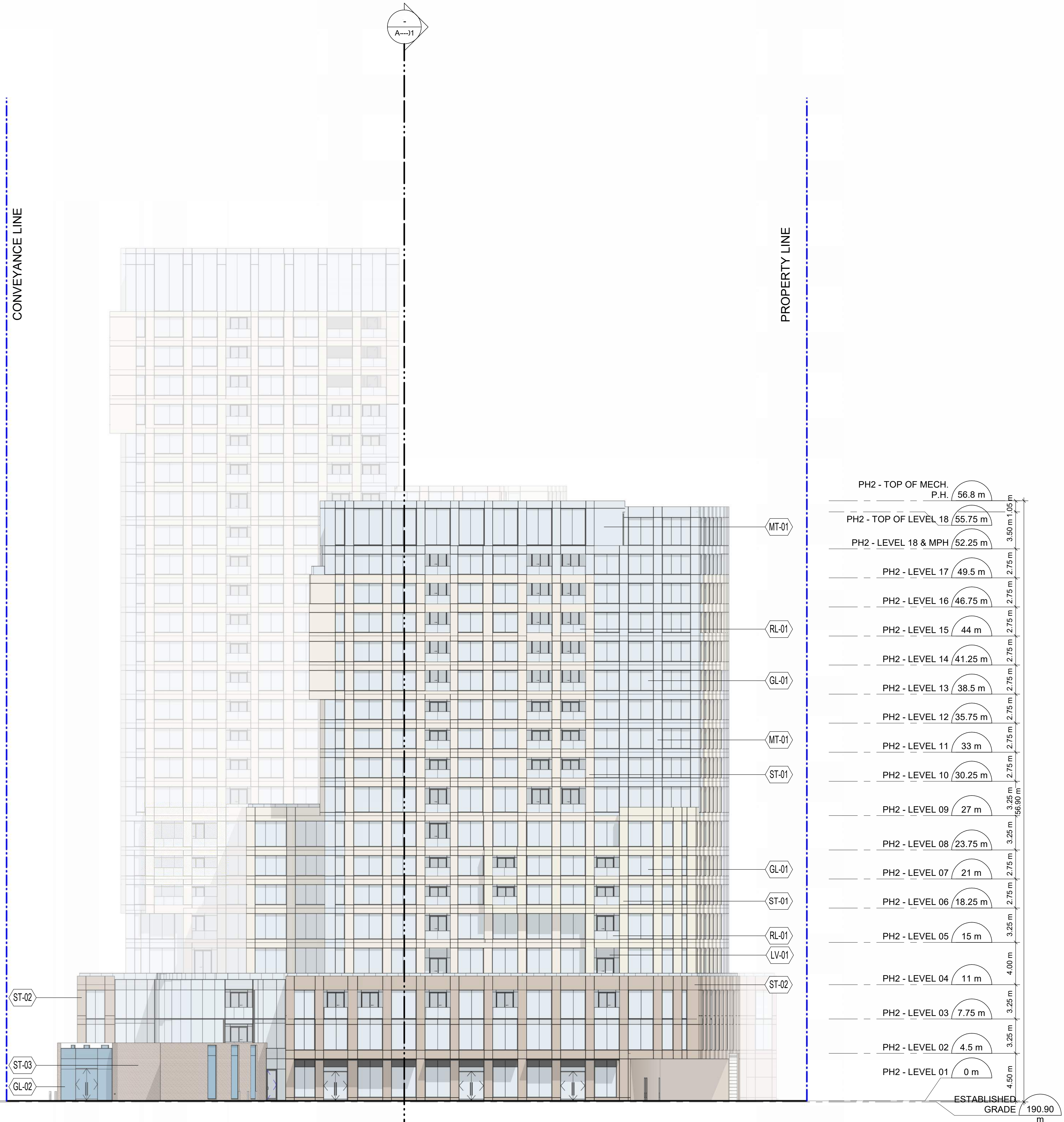
PROJECT
 69 BRAMALEA
 69 Bramalea Road
 Brampton, Ontario

PROJECT NO: 108558
DRAWN BY: Author
PROJECT MGR: Designer
CHECKED BY: Checker
APPROVED BY: Approver

SHEET TITLE
 SOUTH ELEVATION

SHEET NUMBER A-304 **ISSUE** 3

PROPERTY LINE
 BRAMALEA ROAD WIDENING
 CONVEYANCE LINE



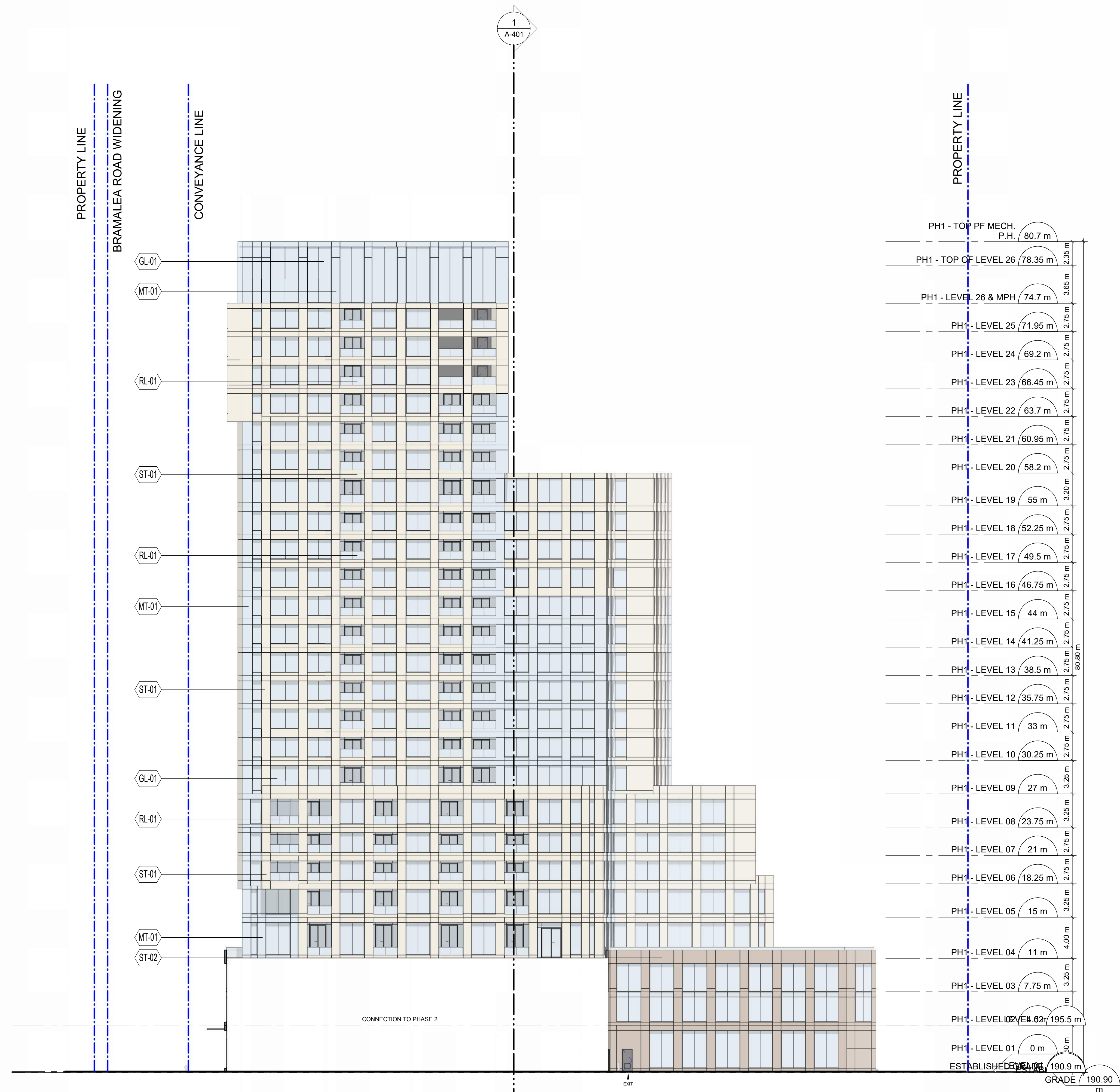
1 SOUTH ELEVATION
 A-304 Scale: 1 : 200

C:\Users\alimohab877\OneDrive - ARCADIS\Documents\69BRAMALEA-A-PH1-PCD\IM-R22_26-18st_Imoon.almohammad_1M2SABWAE5MU.rvt

2024-12-09 5:09:58 PM

INTERNAL SOUTH ELEVATION FOR PHASE 1

A-305 Scale: 1 : 200



MATERIAL LEGEND

GL - 01	VISION GLASS
SP - 01	SPANDREL PANEL - LIGHT
SP - 02	SPANDREL PANEL - CHARCOAL
LV - 01	LOUVER PANEL
RL - 01	VISION GLASS
ST - 01	LIGHT STONE
ST - 02	MEDIUM TONE STONE
ST - 03	HERITAGE PANELS
MT - 01	METAL PANEL

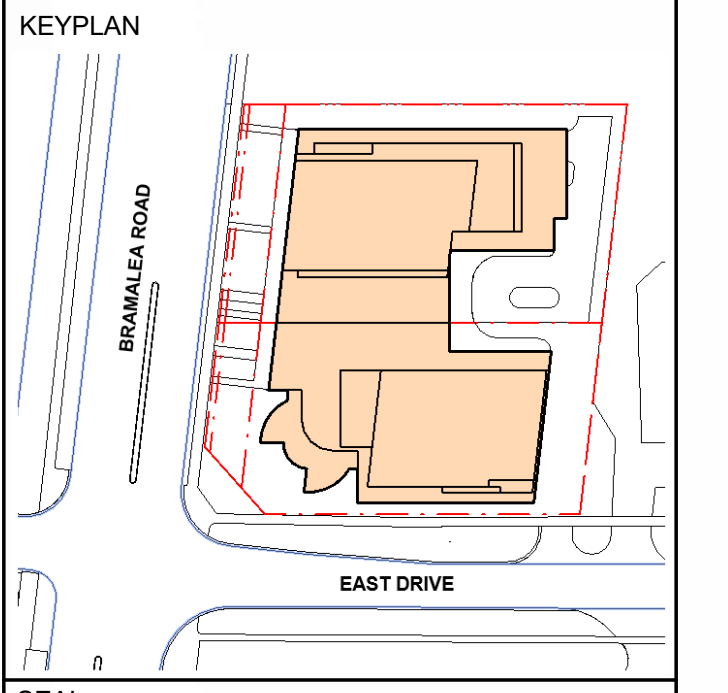
CLIENT



COPYRIGHT
 This drawing has been prepared solely for the intended use. Any reproduction or distribution for any purpose other than authorized by Arcadis Architects Inc. is prohibited. Written dimensions shall have precedence over scaled dimensions. Contractors shall verify and be responsible for all dimensions and conditions on the job, and Arcadis Architects shall be informed of any variations from the dimensions and conditions shown on the drawing. Shop drawings shall be submitted to Arcadis Architects for general conformance before proceeding with fabrication.
 Arcadis Architects (Canada) Inc.

ISSUES	DESCRIPTION	DATE
1	OPAZBA SUBMISSION	May 26, 2023
2	OPAZBA RESUBMISSION	January 12, 2024
3	OPAZBA RESUBMISSION	December 10, 2024

NOTES



SEAL



PROJECT
 69 BRAMALEA
 69 Bramalea Road
 Brampton, Ontario

PROJECT NO: 108558
DRAWN BY: Author
PROJECT MGR: Designer
CHECKED BY: Checker
APPROVED BY: Approver

SHEET TITLE
 BUILDING A INTERNAL ELEVATION

SHEET NUMBER A-305 **ISSUE** 3

C:\Users\alimohab877\OneDrive - ARCADIS\Documents\69BRAMALEA\A-PH1-PCD\IM-R22_26-1864_Imoona.alimohammad_HMZSABWAE5MU.rvt

MATERIAL LEGEND

GL - 01	VISION GLASS
SP - 01	SPANDREL PANEL - LIGHT
SP - 02	SPANDREL PANEL - CHARCOAL
LV - 01	LOUVER PANEL
RL - 01	VISION GLASS
ST - 01	LIGHT STONE
ST - 02	MEDIUM TONE STONE
ST - 03	HERITAGE PANELS
MT - 01	METAL PANEL

CLIENT

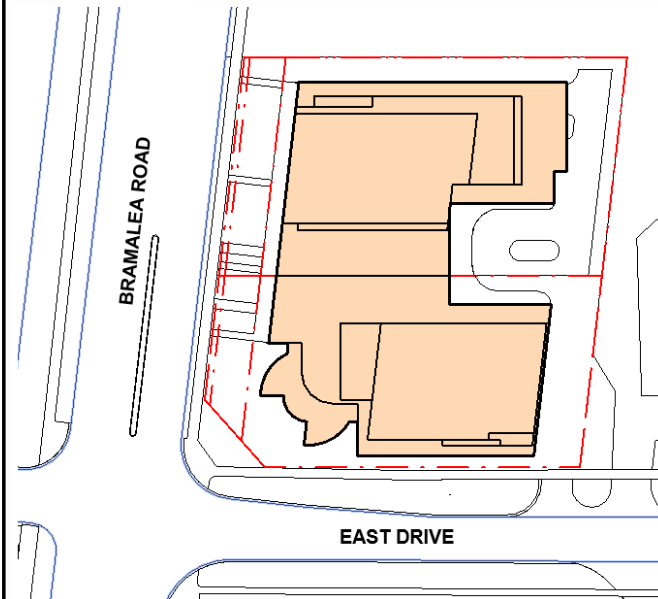


COPYRIGHT
This drawing has been prepared solely for the intended use. No reproduction or distribution for any purpose other than authorized by Arcadis Architects Inc. is permitted. Written dimensions shall have precedence over scaled dimensions. Contractors shall verify and be responsible for all dimensions and conditions on the job, and Arcadis Architects shall be informed of any variations from the dimensions and conditions shown on the drawing. Shop drawings shall be submitted to Arcadis Architects for general conformance before proceeding with fabrication.
Arcadis Architects (Canada) Inc.

ISSUES	DESCRIPTION	DATE
1	OPA/ZBA SUBMISSION	May 26, 2023
2	OPA/ZBA RESUBMISSION	January 12, 2024
3	OPA/ZBA RESUBMISSION	December 10, 2024

NOTES

KEYPLAN



SEAL

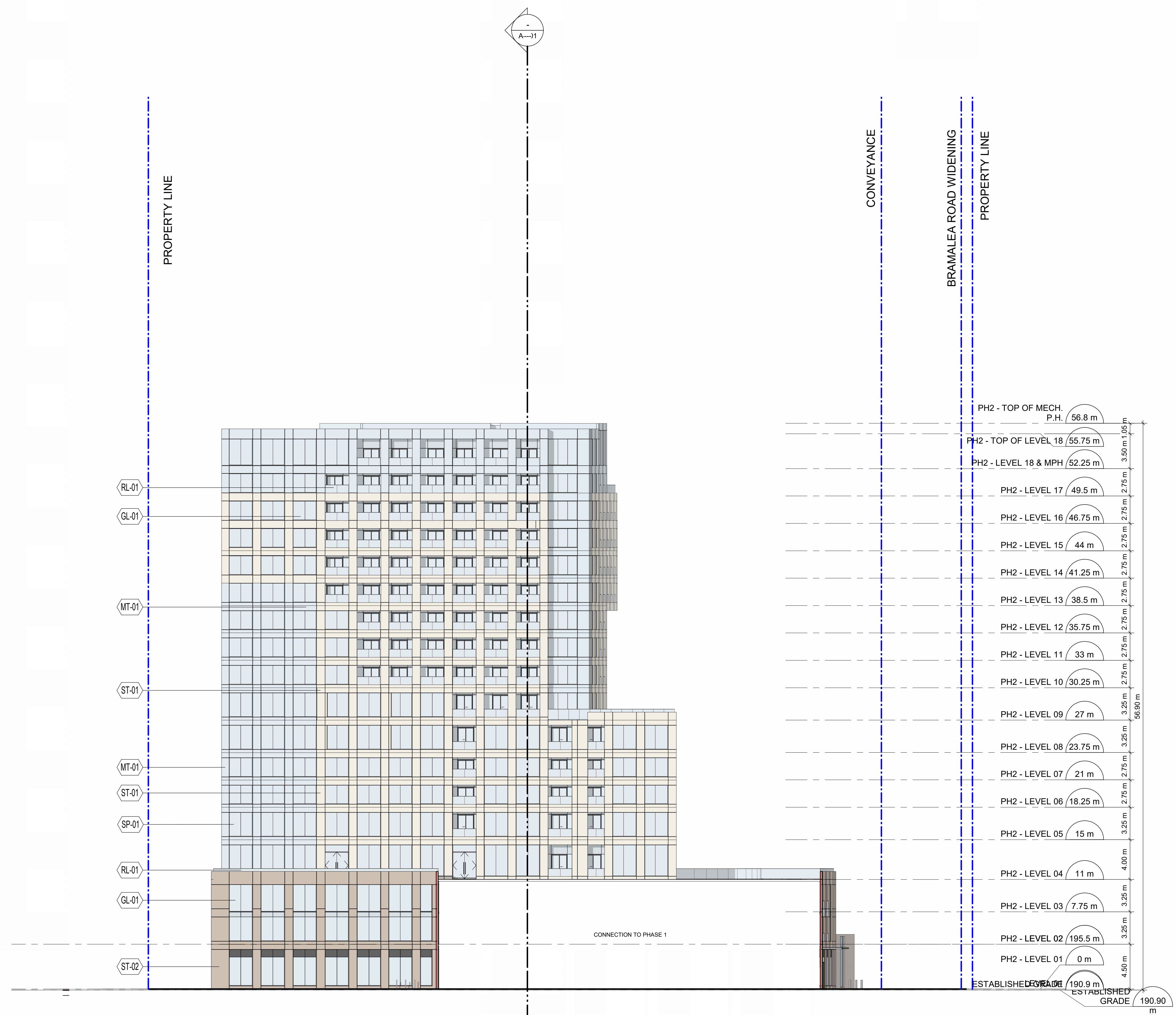


PROJECT
69 BRAMALEA
69 Bramalea Road
Brampton, Ontario

PROJECT NO: 108558
DRAWN BY: Author
PROJECT MGR: Designer
CHECKED BY: Checker
APPROVED BY: Approver

SHEET TITLE
BUILDING B INTERNAL
ELEVATION

SHEET NUMBER A-306
ISSUE 3

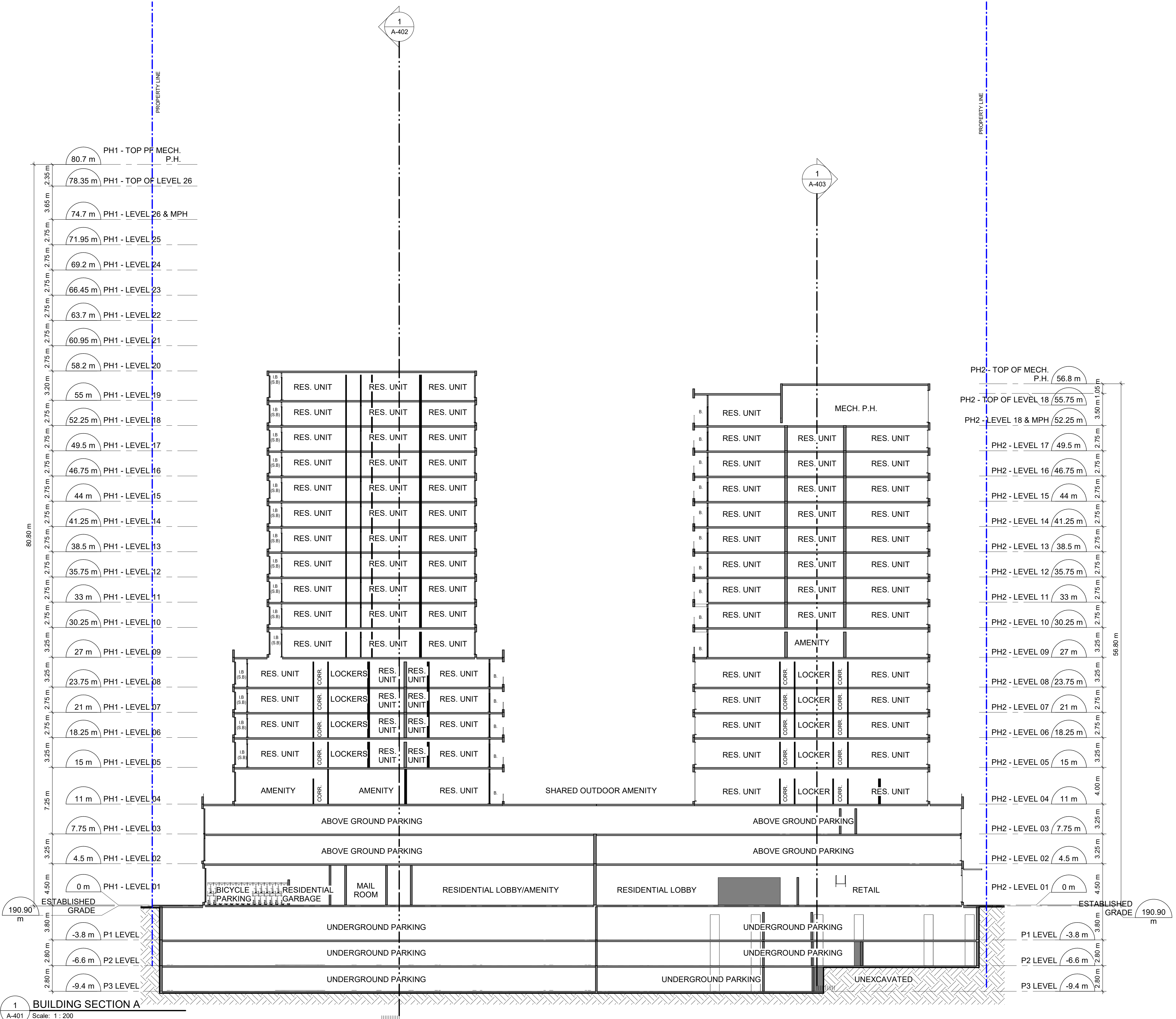


2024-12-09 5:10:26 PM

1 INTERNAL NORTH ELEVATION FOR PHASE 2
A-306 Scale: 1 : 200

C:\Users\alimohab877\OneDrive - ARCADIS\Documents\69BRAMALEA-A-PH1-PCD\IM-R22_26-18st_18moona.alimohammad_1M2SABWAE5MU.rvt

2024-12-09 5:10:27 PM



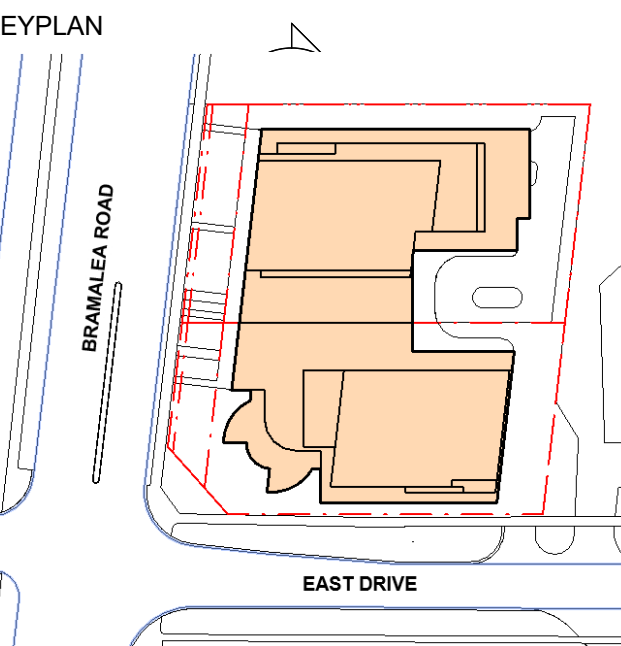
1 BUILDING SECTION A
A-401 Scale: 1 : 200



COPYRIGHT
This drawing has been prepared solely for the intended use. No reproduction or distribution for any purpose other than authorized by Arcadis Architects Inc. is permitted. Written dimensions shall have precedence over scaled dimensions. Contractors shall verify and be responsible for all dimensions and conditions on the job, and Arcadis Architects shall be informed of any variations from the dimensions and conditions shown on the drawing. Shop drawings shall be submitted to Arcadis Architects for general conformance before proceeding with fabrication.
Arcadis Architects (Canada) Inc.

ISSUES No.	DESCRIPTION	DATE
1	OPA/ZBA SUBMISSION	May 26, 2023
2	OPA/ZBA RESUBMISSION	January 12, 2024
3	OPA/ZBA RESUBMISSION	December, 10, 2024

NOTES



SEAL



PROJECT
69 BRAMALEA
69 Bramalea Road
Brampton, Ontario

PROJECT NO:
108558
DRAWN BY: Author
PROJECT MGR: Designer
CHECKED BY: Checker
APPROVED BY: Approver

SHEET TITLE
SITE SECTION - NORTH-SOUTH

SHEET NUMBER
A-401
ISSUE
3

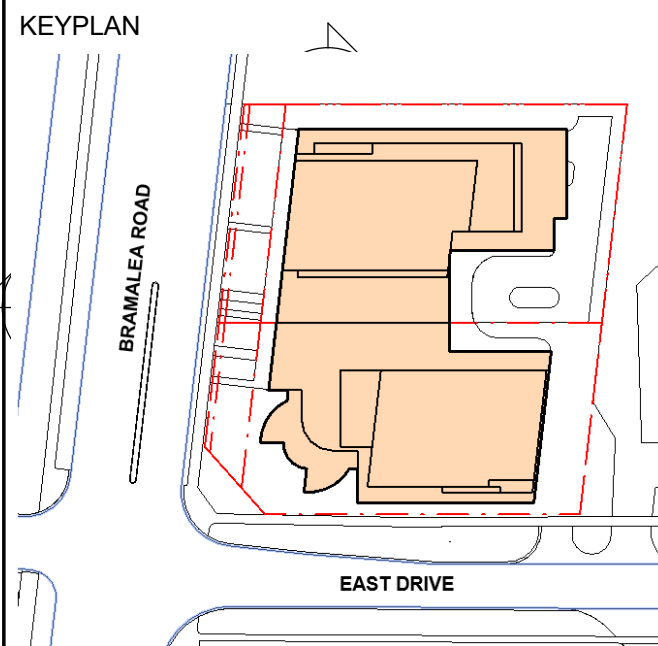
C:\Users\alimohab877\OneDrive - ARCADIS\Documents\69BRAMALEA-A-PH1-PCD\IM-R22_26-1861_Imoona.alimohammad_HMZSABWAE5MU.rvt



COPYRIGHT
 This drawing has been prepared solely for the intended use. Any reproduction or distribution for any purpose other than authorized by Arcadis Architects Inc. is prohibited. Written dimensions shall have precedence over scaled dimensions. Contractors shall verify and be responsible for all dimensions and conditions on the job, and Arcadis Architects shall be informed of any variations from the dimensions and conditions shown on the drawing. Shop drawings shall be submitted to Arcadis Architects for general conformance before proceeding with fabrication.
 Arcadis Architects (Canada) Inc.

ISSUES	DESCRIPTION	DATE
1	OPA/ZBA SUBMISSION	May 26, 2023
2	OPA/ZBA RESUBMISSION	January 12, 2024
3	OPA/ZBA RESUBMISSION	December 10, 2024

NOTES



SEAL

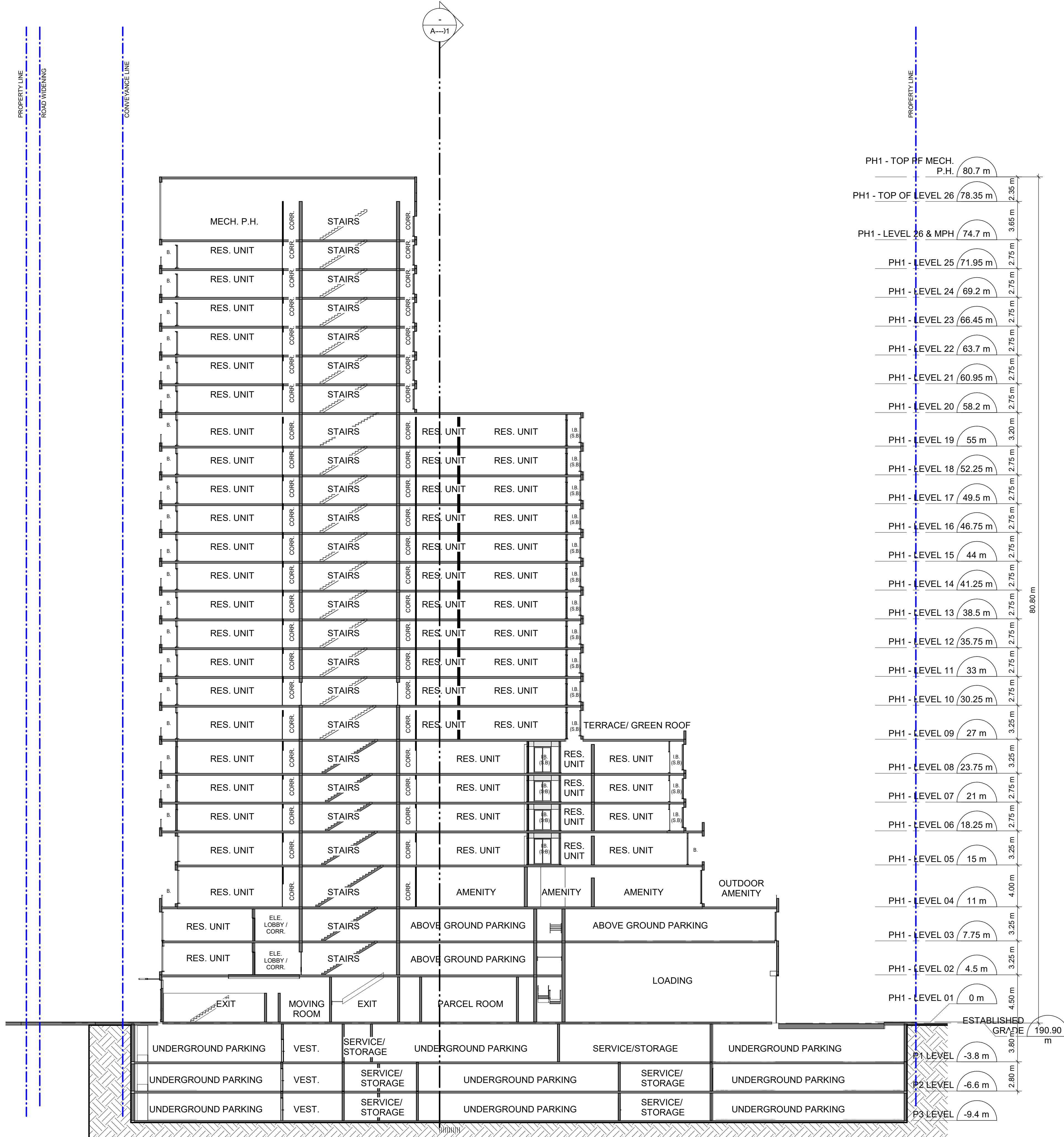


PROJECT
 69 BRAMALEA
 69 Bramalea Road
 Brampton, Ontario

PROJECT NO: 108558
DRAWN BY: Author
CHECKED BY: Checker
PROJECT MGR: Designer
APPROVED BY: Approver

SHEET TITLE
 PHASE 1 SECTION - EAST-WEST

SHEET NUMBER A-402 **ISSUE** 3

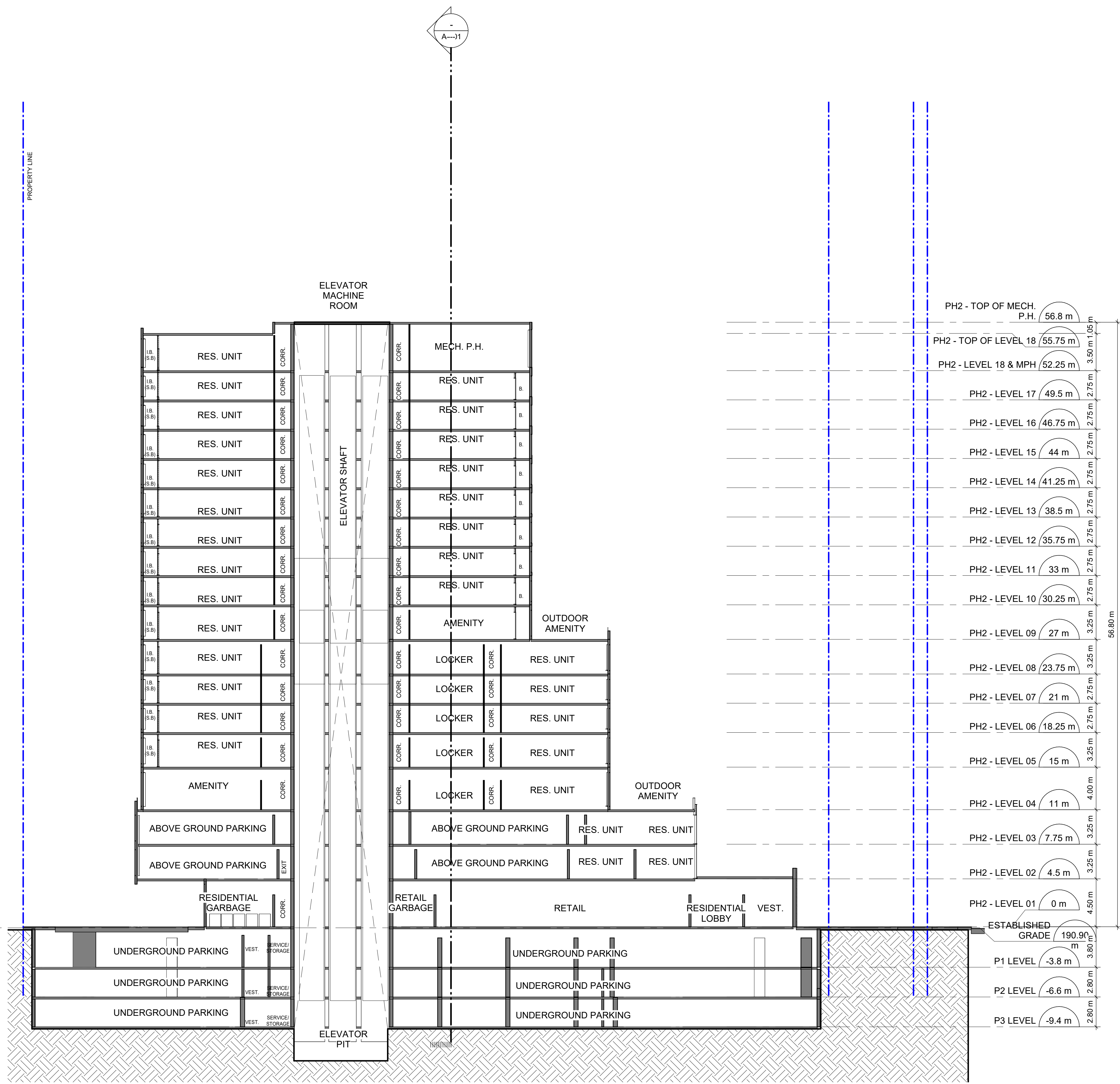


2024-12-09 5:10:29 PM

1 BUILDING SECTION AT PH1
 A-402 Scale: 1 : 200

C:\Users\alimohab877\OneDrive - ARCADIS\Documents\69BRAMALEA-A-PH1-POD\IM-R22_26-18st_Imoona.alimohammad_1M2SABWAE5MU.rvt

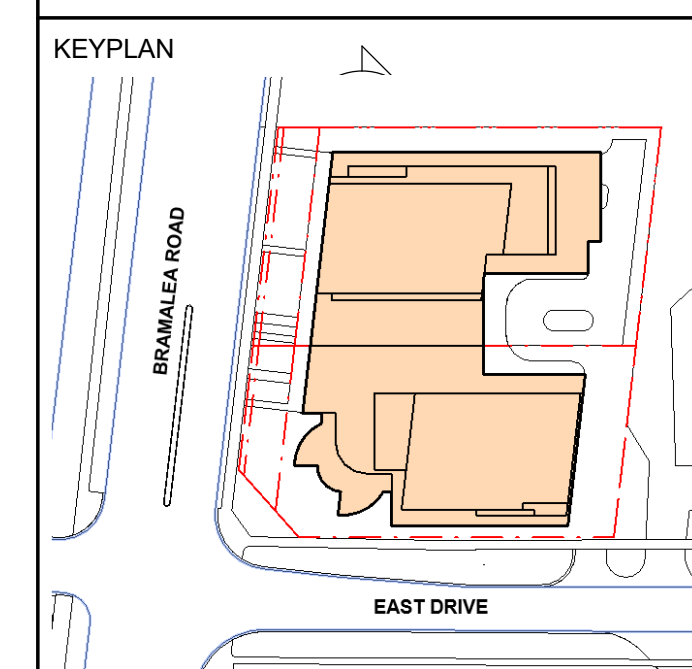
1 BUILDING SECTION AT PH2
A-403 Scale: 1 : 200



COPYRIGHT
This drawing has been prepared solely for the intended use. Any reproduction or distribution for any purpose other than authorized by Arcadis Architects Inc. is prohibited. Written dimensions shall have precedence over scaled dimensions. Contractors shall verify and be responsible for all dimensions and conditions on the job, and Arcadis Architects shall be informed of any variations from the dimensions and conditions shown on the drawing. Shop drawings shall be submitted to Arcadis Architects for general conformance before proceeding with fabrication.
Arcadis Architects (Canada) Inc.

ISSUES No.	DESCRIPTION	DATE
1	OPA/ZBA SUBMISSION	May 26, 2023
2	OPA/ZBA RESUBMISSION	January 12, 2024
3	OPA/ZBA RESUBMISSION	December 10, 2024

NOTES



SEAL



PROJECT
69 BRAMALEA
69 Bramalea Road
Brampton, Ontario

PROJECT NO:
108558
DRAWN BY: Author
CHECKED BY: Checker
PROJECT MGR: Designer
APPROVED BY: Approver

SHEET TITLE
PHASE 2 SECTION - EAST-WEST

SHEET NUMBER
A-403
ISSUE
3



EAST VIEW FROM BRAMALEA ROAD

2024-12-09 5:10:31 PM

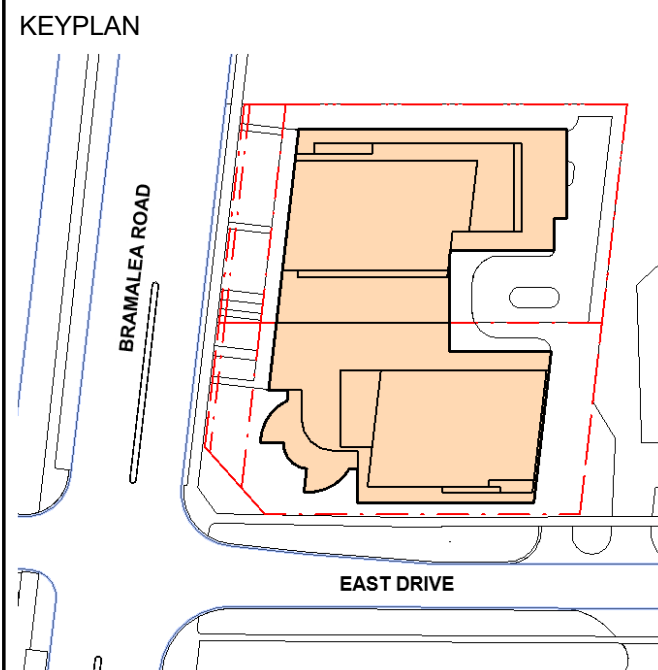
CLIENT



COPYRIGHT
 This drawing has been prepared solely for the intended use. Thus any reproduction or distribution for any purpose other than authorized by Arcadis Architects is prohibited. Written dimensions shall have precedence over scaled dimensions. Contractors shall verify and be responsible for all dimensions and conditions on the job, and Arcadis Architects shall be informed of any variations from the dimensions and conditions shown on the drawing. Shop drawings shall be submitted to Arcadis Architects for general conformance before proceeding with fabrication.
 Arcadis Architects (Canada) Inc.

ISSUES		
No.	DESCRIPTION	DATE
1	OPA/ZBA SUBMISSION	May 26, 2023
2	OPA/ZBA RESUBMISSION	January 12 2024
3	OPA/ZBA RESUBMISSION	December 10 2024

NOTES



SEAL



PROJECT
69 BRAMALEA
 69 Bramalea Road
 Brampton, Ontario

PROJECT NO:
108558

DRAWN BY: Author	CHECKED BY: Checker
PROJECT MGR: Designer	APPROVED BY: Approver

SHEET TITLE
PERSPECTIVES

SHEET NUMBER A-601	ISSUE 3
------------------------------	-------------------

C:\Users\alimohab@877OneDrive - ARCADIS\Documents\69BRAMALEA-A-PH1-PCDD\IM-R22_26-1864_Imboma.alimohammad_1M2SABWAE5MU.rvt



WEST VIEW FROM EAST DRIVE



EAST VIEW FROM BRAMALEA ROAD



EAST VIEW FROM BRAMALEA ROAD

CLIENT

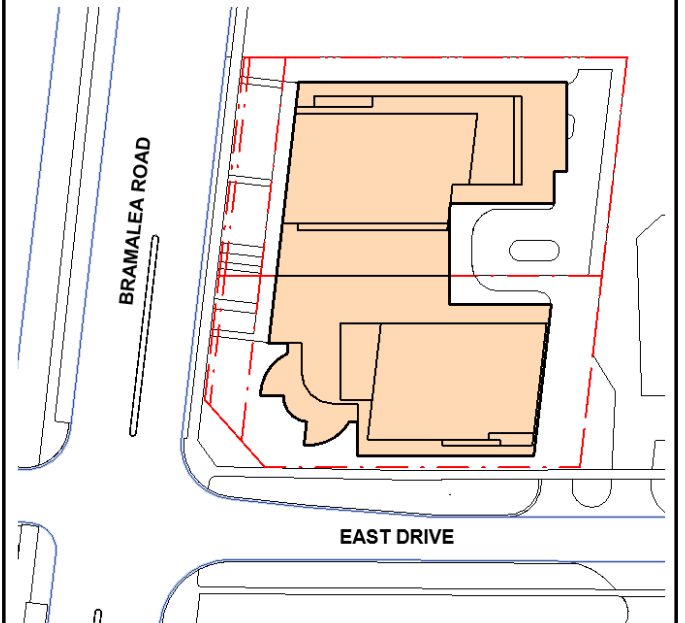


COPYRIGHT
 This drawing has been prepared solely for the intended use. No reproduction or distribution for any purpose other than authorized by Arcadis Architects is permitted. Written dimensions shall have precedence over scaled dimensions. Contractors shall verify and be responsible for all dimensions and conditions on the job, and Arcadis Architects shall be informed of any variations from the dimensions and conditions shown on the drawing. Shop drawings shall be submitted to Arcadis Architects for general conformance before proceeding with fabrication.
 Arcadis Architects (Canada) Inc.

ISSUES No.	DESCRIPTION	DATE
1	OPA/ZBA SUBMISSION	May 26, 2023
2	OPA/ZBA RESUBMISSION	January 12, 2024
3	OPA/ZBA RESUBMISSION	December 10, 2024

NOTES

KEYPLAN



SEAL



PROJECT
 69 BRAMALEA
 69 Bramalea Road
 Brampton, Ontario

PROJECT NO: 108558
DRAWN BY: Author
PROJECT MGR: Designer
CHECKED BY: Checker
APPROVED BY: Approver

SHEET TITLE
 PERSPECTIVES

SHEET NUMBER A-602 **ISSUE** 3

2024-12-09 5:10:31 PM

C:\Users\alimohab3877\OneDrive - ARCADIS\Documents\69BRAMALEA-A-PH1-PCD\IM-R22_26-1864_Imoona.alimohammad_HMZSABWAE5MU.rvt

CLIENT

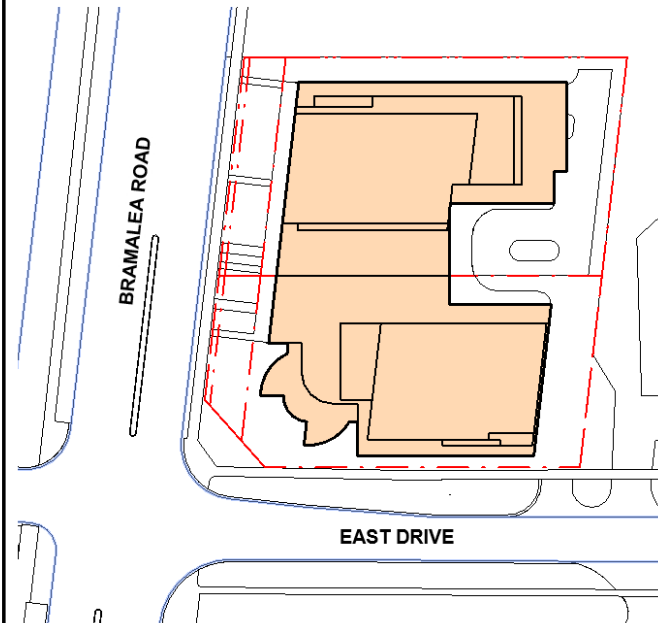


COPYRIGHT
This drawing has been prepared solely for the intended use. No reproduction or distribution for any purpose other than authorized by Arcadis Architects is permitted. Written dimensions shall have precedence over scaled dimensions. Contractors shall verify and be responsible for all dimensions and conditions on the job, and Arcadis Architects shall be informed of any variations from the dimensions and conditions shown on the drawing. Shop drawings shall be submitted to Arcadis Architects for general conformance before proceeding with fabrication.
Arcadis Architects (Canada) Inc.

ISSUES	DESCRIPTION	DATE
1	OPA/ZBA SUBMISSION	May 26, 2023
2	OPA/ZBA RESUBMISSION	January 12, 2024
3	OPA/ZBA RESUBMISSION	December 10, 2024

NOTES

KEYPLAN



SEAL



PROJECT
69 BRAMALEA
69 Bramalea Road
Brampton, Ontario

PROJECT NO: 108558
DRAWN BY: Author
PROJECT MGR: Designer
CHECKED BY: Checker
APPROVED BY: Approver

SHEET TITLE
PERSPECTIVES

SHEET NUMBER A-603 **ISSUE** 3



NORTHEAST VIEW FROM BRAMALEA ROAD

2024-12-09 5:10:31 PM

C:\Users\almoahab877\OneDrive - ARCADIS\Documents\69BRAMALEA-A-PH1-PCDD\IM-RS2_26-1864_Imoona.almoahab877\IMZSABWAE5MU.rvt



SOUTHWEST VIEW FROM ADJACENT PROPERTY



NORTHWEST VIEW FROM EAST DRIVE



NORTHEAST VIEW FROM BRAMALEA ROAD

CLIENT

MEDALLION

COPYRIGHT
 This drawing has been prepared solely for the intended use. No reproduction or distribution for any purpose other than authorized by Arcadis Architects is permitted. Written dimensions shall have precedence over scaled dimensions. Contractors shall verify and be responsible for all dimensions and conditions on the job, and Arcadis Architects shall be informed of any variations from the dimensions and conditions shown on the drawing. Shop drawings shall be submitted to Arcadis Architects for general conformance before proceeding with fabrication.
 Arcadis Architects (Canada) Inc.

ISSUES		
No.	DESCRIPTION	DATE
1	OPA/ZBA SUBMISSION	May 26, 2023
2	OPA/ZBA RESUBMISSION	January 12, 2024
3	OPA/ZBA RESUBMISSION	December 10, 2024

NOTES

SEAL

ARCADIS
 ARCADIS ARCHITECTS (CANADA) INC.
 55 St. Clair Avenue West | 7th Floor
 Toronto | ON | M4V 2Y7 | Canada
 T 416 596 1930 | F 416 596 0644
www.arcadis.com

PROJECT
69 BRAMALEA
 69 Bramalea Road
 Brampton, Ontario

PROJECT NO:
108558

DRAWN BY: Author	CHECKED BY: Checker
PROJECT MGR: Designer	APPROVED BY: Approver

SHEET TITLE
PERSPECTIVES

SHEET NUMBER A-604	ISSUE 3
------------------------------	-------------------

2024-12-09 5:10:32 PM

C:\Users\alimohab@677\OneDrive - ARCADIS\Documents\69BRAMALEA-A-PH1-PCD\108558_26-1864_Imboma.alimohammad_108558\BAMALEA.rvt