

CASA
DEE
Montessori



Introduction & Business Overview

Casa Dee Montessori Schools Operates three childcares across Peel Region

Two are located in Brampton.

- Casa Dee Montessori employs about 20 staff and plans to add another 4 with another location, creating employment opportunities.
- We provide child care services to 32 children currently in Brampton, with an additional capacity for 13.
- We are committed to providing additional capacity for children and continuing to work with the City of Brampton and the Region of Peel.

Introduction

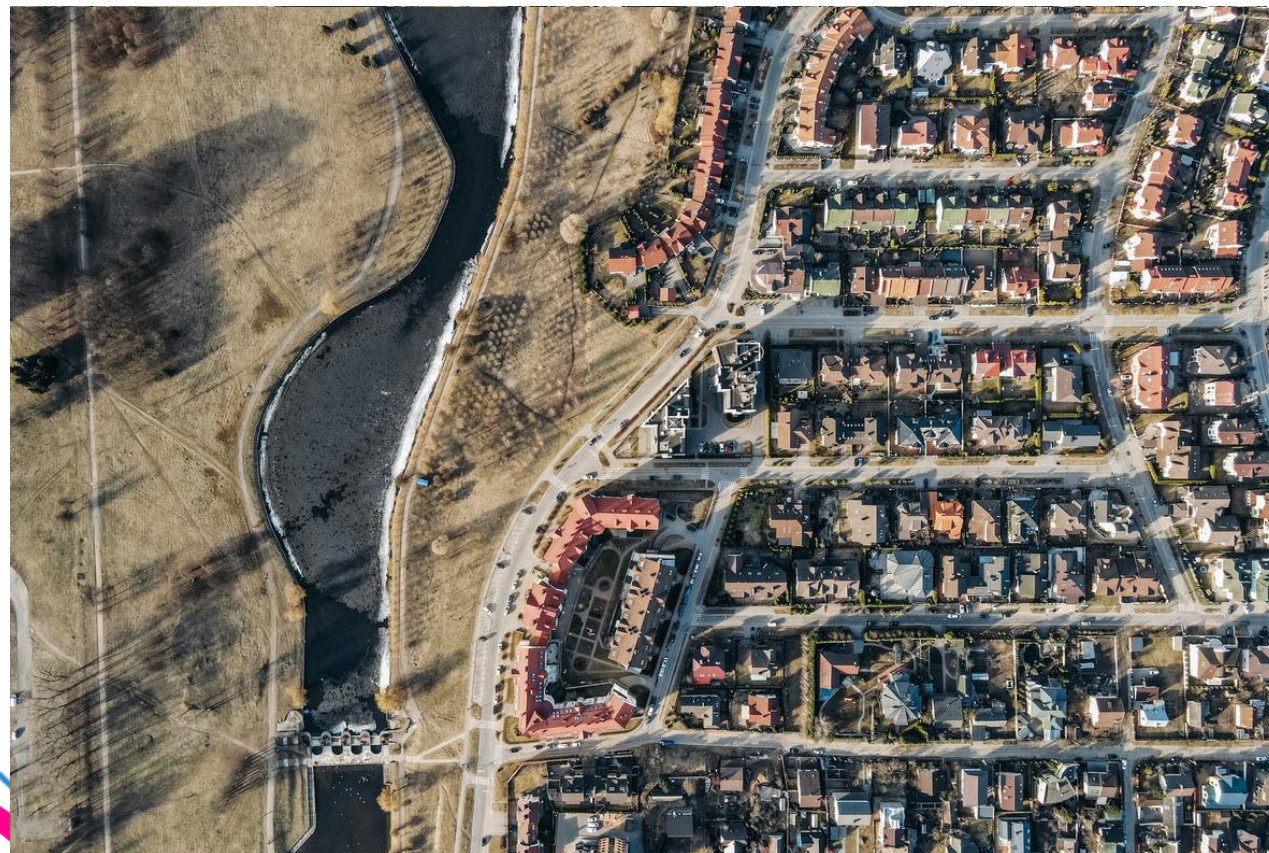


Growing Demand for Childcare

- CDM's waitlist for childcare services is growing. We expect 30-40 additional children to be added weekly, bringing the total to 1,000+ families waiting for childcare services within a year.
- The majority of inquiries are coming from the rapidly growing Brampton West.
- CDM aims to add at least 300-400 childcare spaces over the next two years to meet both current and future childcare needs, resulting in approximately 70-80 new employment positions.

What is we are seeking

- CDM is primarily seeking one or more building to lease about 4500-6000sqft
- Long term about new land which can be zoned for childcare use to develop



Programs we will Support

- CDM's is open all new locations be part of CWELCC
- We apply and Permit Peel Subsidy Program
- Be Part of PRIS and CDRC



Community Benefits of Expansion

- The project will improve access to licensed child care in the community, supporting vulnerable children from diverse backgrounds
- Children living in low-income families
- Children with special needs
- Black and other racialized groups
- Children of newcomers to Canada
- Francophone children
- Indigenous children

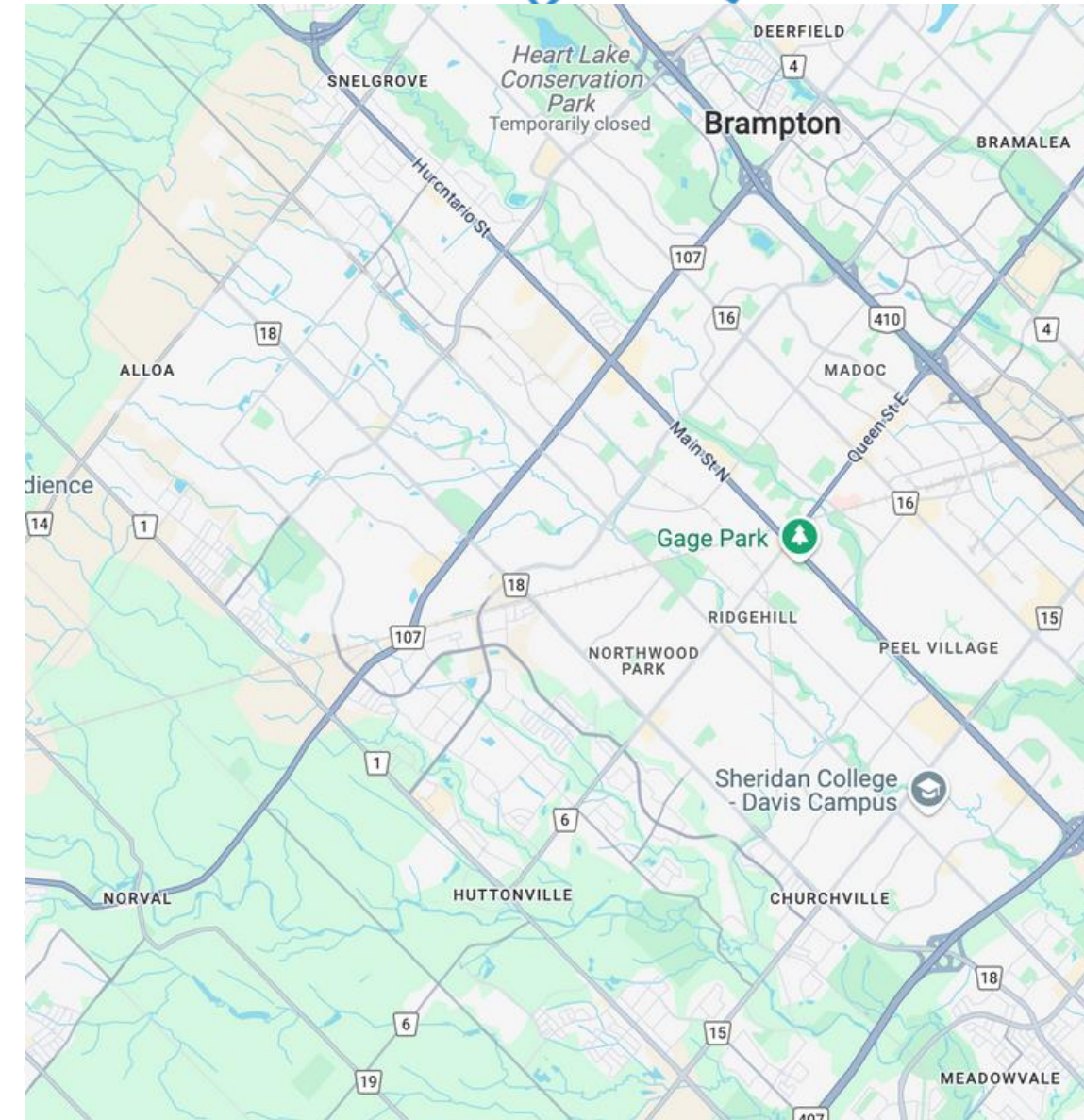


Community Benefits of Expansion

- The project will serve a diverse community from different backgrounds and cultures. We will showcase this diversity through events and incorporate it into our programming.
- We will participate in Raising the Bar and PIRS. Additionally, there are plans to hire a special needs teacher to support children with special needs.
- The area has many newcomers to Canada who will benefit from having their children in childcare, allowing them to work and support their families.

Identifying Potential Locations

- Ideally Location would Along or North of Bovaird Drive and West of Hwy 410.
- Would allow 15 minutes access to about from North, South and West Brampton



Proposed Timeline & Next Steps

- Identify a new site ASAP
- Apply for CWELCC Application
- Construction and permitting
- Equipment and Hiring
- Welcoming new parents