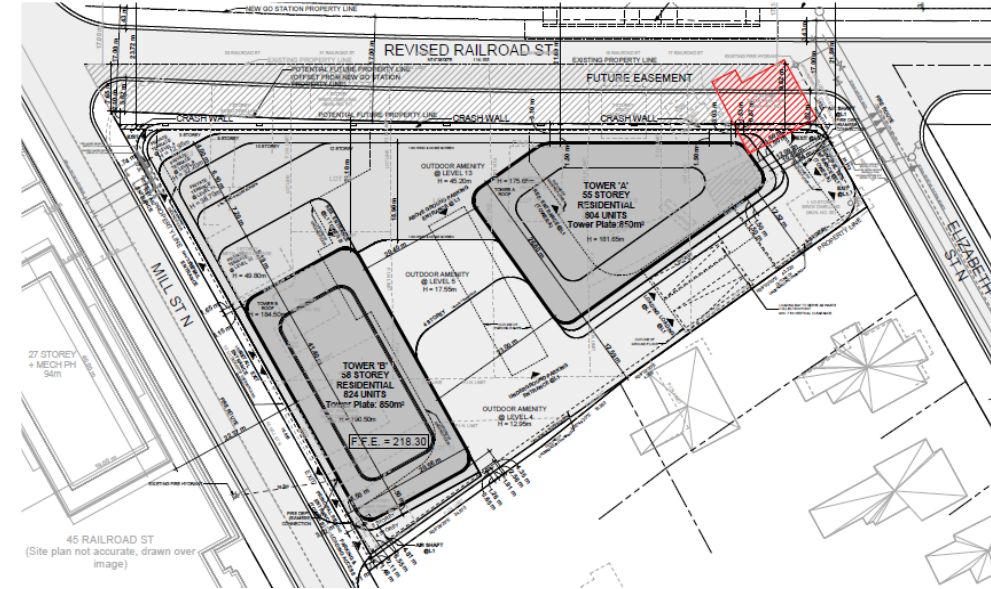


59 Elizabeth Street North and Railroad Cultural Heritage Landscape Documentation and Salvage Report and Heritage Commemoration Plan Recommendation Report



Project footprint & adjacent listed and designated properties

The proposed development consists of two (2) high-rise residential buildings with heights of 55 and 58 storeys with a 3 to 13 storey terraced building podium.



Proposed development Site Plan with footprint of existing 59 Elizabeth Street North



Elizabeth Street North - Sectional Elevation with design mitigation strategies

59 Elizabeth Street North and Railroad Cultural Heritage Landscape Documentation and Salvage Report and Heritage Commemoration Plan Recommendation Report



59 Elizabeth Street North

Identified attributes for 59 Elizabeth St N

- Associations with the structure's use and history as a hotel including its placement at the intersection of Railroad Street and Elizabeth Street North across from the train station and rail corridor.
- The relationship to the adjacent late 19th and early 20th century residential dwellings along Railroad Street.

Identified attributes for Railroad CHL

- Associations with the structure's use and history as a hotel including its placement at the intersection of Railroad Street and Elizabeth Street North across from the train station and rail corridor.
- The relationship to the adjacent late 19th and early 20th century residential dwellings along Railroad Street.



17 Railroad Street



19 Railroad Street



23 Railroad Street



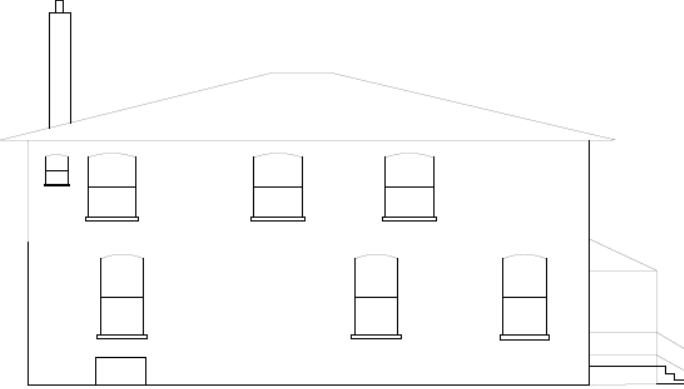
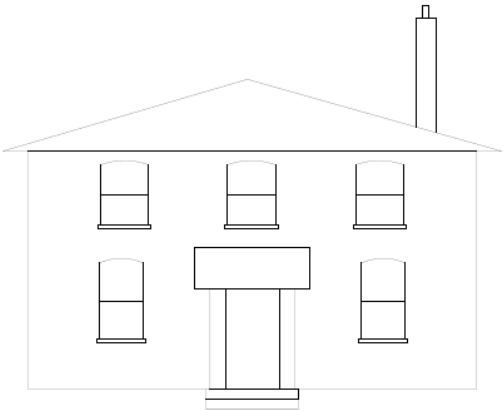
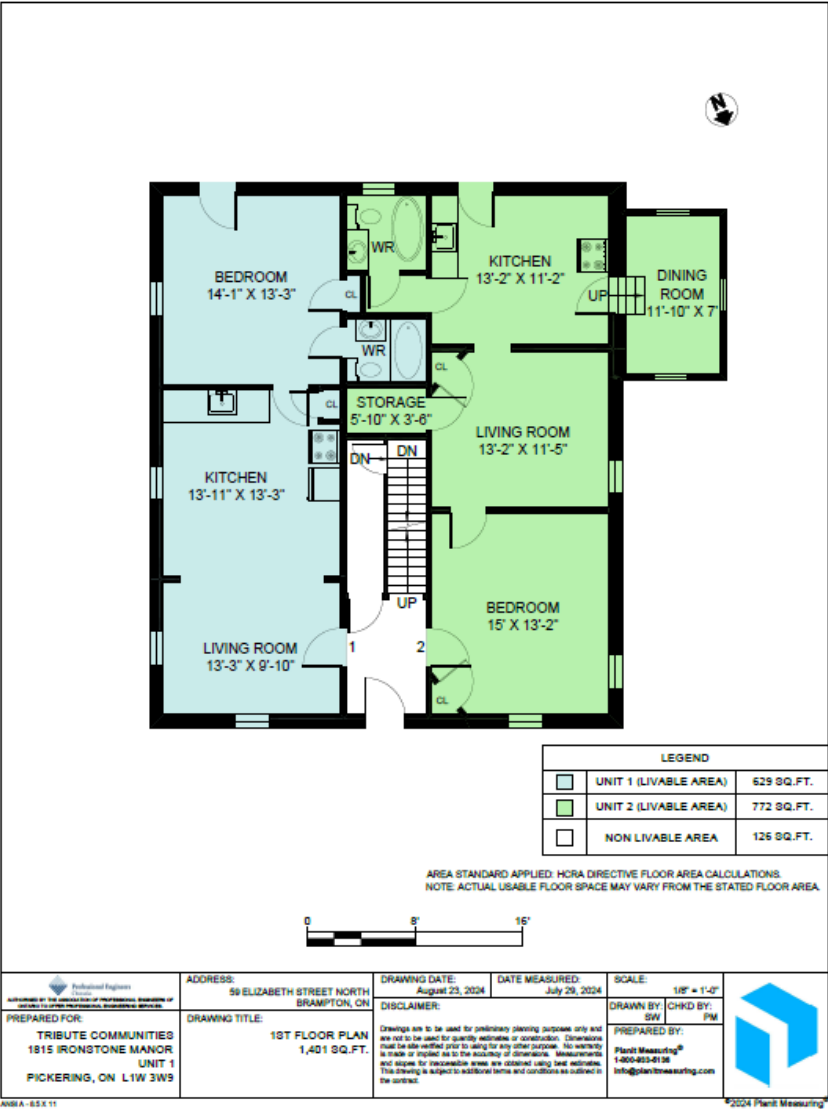
31 Railroad Street- Listed





35 Railroad Street

59 Elizabeth Street North and Railroad Cultural Heritage Landscape
Documentation and Salvage Report and Heritage Commemoration Plan Recommendation Report

Documentation drawings for 59 Elizabeth Street North

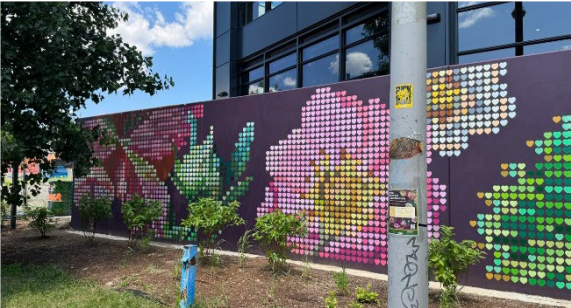


59 Elizabeth Street North and Railroad Cultural Heritage Landscape Documentation and Salvage Report and Heritage Commemoration Plan Recommendation Report

Heritage Resource	Component to be Salvaged	Photograph
59 Elizabeth Street North	Representative sample of bricks from the exterior walls of 59 Elizabeth Street North (1 pallet)	
	Potential plaster mouldings	<i>Not visible ahead of demolition</i>
	Clawfoot bathtub	
	Cast iron radiators	
Railroad Street CHL	Representative samples of bricks from contributing properties located within the CHL (1 pallet)	
		

Proposed Commemorative Strategies:

- Installation of Interpretive Plaques:
 - For Elizabeth Street North
Title: The Arlington Hotel
Proposed Location: Intersection of Railroad Street and Elizabeth Street North
 - For Railroad Street Plaza
Title: Railroad Street and the Railway
Proposed Location: Intersection of Railroad Street and Mill Street North
 - Provisional Interior Plaque
Installed with displayed salvaged plaster moldings from 59 Elizabeth Street North
- Graphic Wrapping:
Graphic film wrapping on the crash wall facing the Brampton Innovation District Go Station. The graphic wrapping would include images or historical mapping of the area or artistic sketches of the houses that were formerly located within the Railroad Street CHL, or more abstract interpretations of area's historic character by painted bricks.



- Display of Salvaged Materials:
Salvaged bricks from 59 Elizabeth St N and Railroad CHL are proposed to be displayed alongside interpretive panels as paver or plinth, or within landscape.