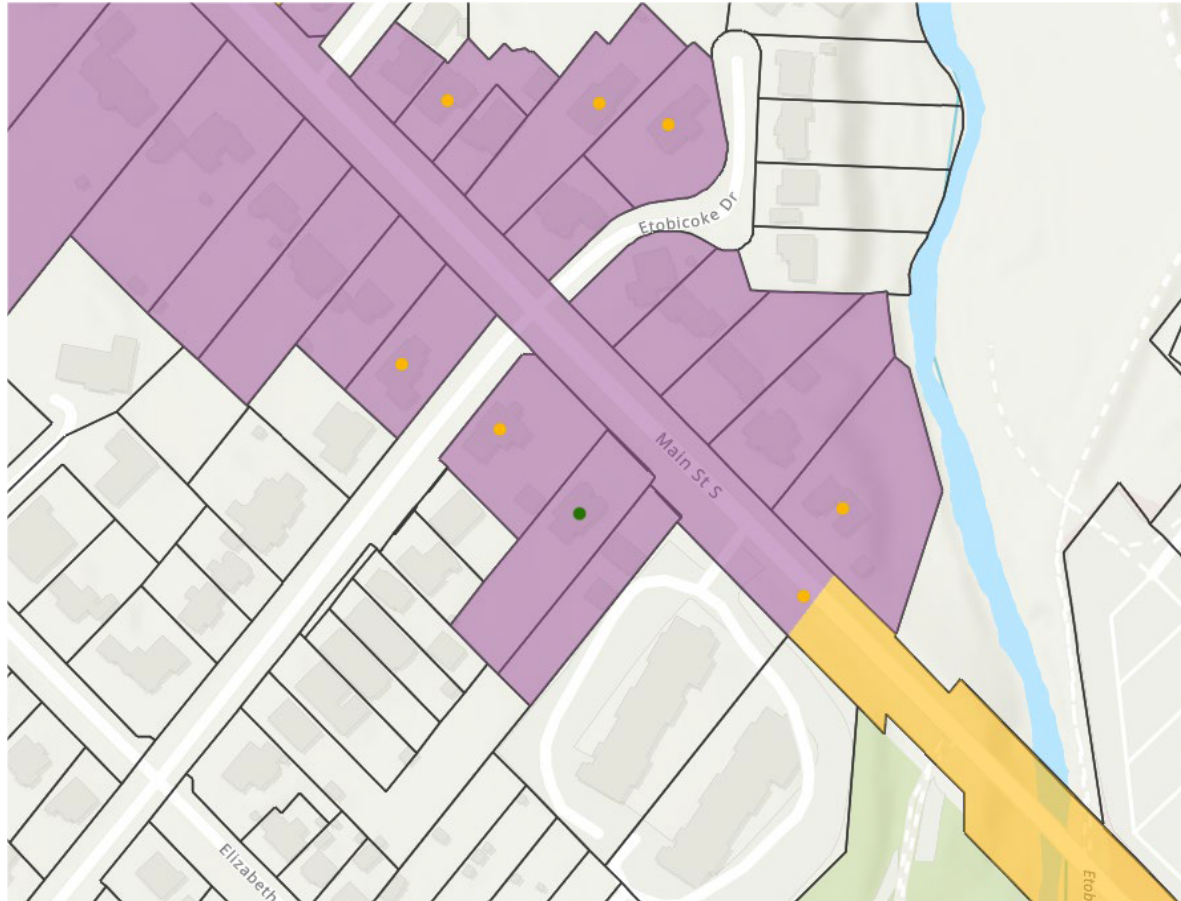
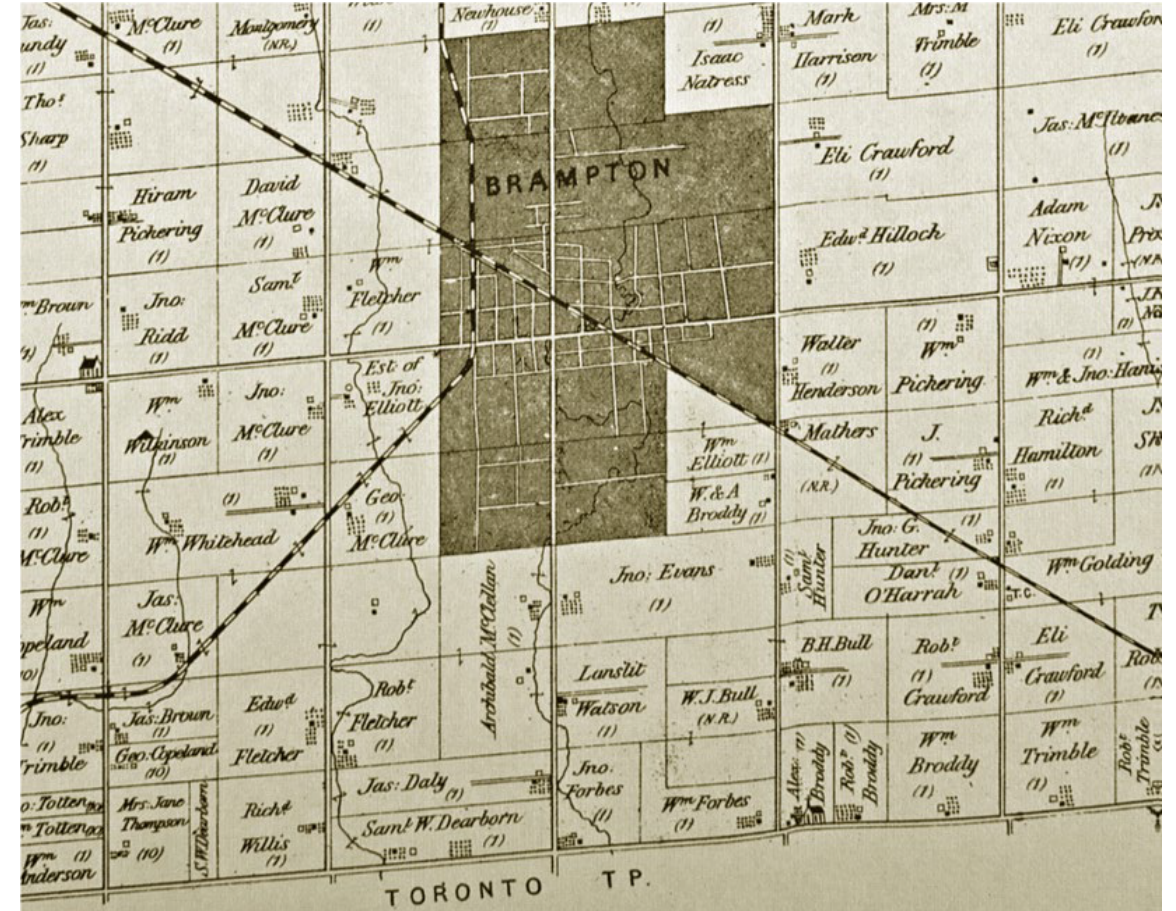


127, 133 and 133A Main Street South Heritage Impact Assessment Recommendation Report



Excerpt from the City of Brampton's planning map indicating the heritage status of the subject lands, outlined with a red dashed line. (Source: City of Brampton, 2024)



Excerpt from the Miles & Co. 1877 Illustrated historical Atlas of the County of Peel, Ont, with the east half of Lot 4, noted with a red dashed line, now comprising part of the Town of Brampton. (Source: Courtesy of McGill University)

127, 133 and 133A Main Street South Heritage Impact Assessment Recommendation Report

127 Main St S (Listed)



127 Main St S Front Façade (Source: City records)



Main St S Rear Façade (Source: City records)

List of identified heritage attributes:

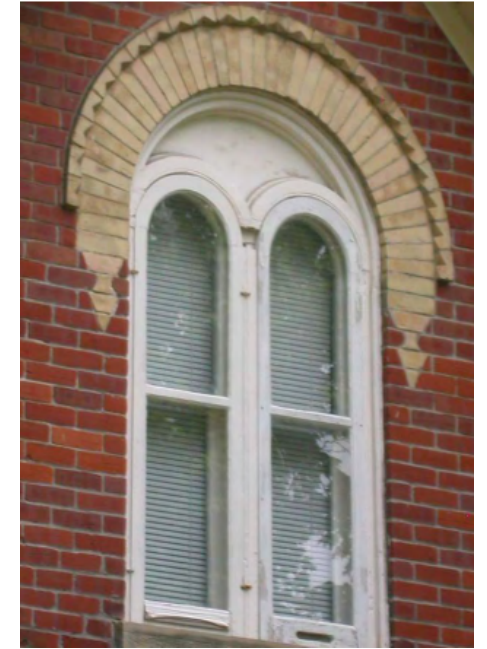
- Edwardian architectural style
- Cut-Stone foundation
- Original 2.5 storey red brick exterior at north, east and south elevations
- Shape and pitch of the hip roof with four symmetrical rectangular dormers
- Original openings including stone sills and lintels
- Triangular pedimented portico at the principal elevation including round short doric columns on masonry bases
- Scale, massing, setback
- Landscaping and mature trees
- Kirkwood family association

127, 133 and 133A Main Street South Heritage Impact Assessment Recommendation Report

133 Main St S (Designated)



133 Main St S Front Façade (Source: City records)



Heritage attributes for 133 Main St S (Source: City records)

List of identified heritage attributes:

- Rare triple-gable form with steeply pitched gables
- Polygonal bay windows on front façade
- symmetrical massing with centre hall plan;
- un-painted red brick masonry laid in stretcher bond;
- dichromatic brick patterning with buff yellow brick utilized to produce quoining, voussoirs and water table;
- predominating window shapes are segmented arched and round-headed windows;
- round-headed double Tuscan window over the two bay windows (front facade);
- central balcony over the main entrance decorated with an iron crest rail;
- Gothic headed opening over the central balcony;
- main entrance with single leaf painted paneled door, rectangular sidelights and panels, an arched three light transom spanning the top of the door, recessed paneled door jamb;
- attached brick stable at rear;
- buff brick voussoirs decorated with projecting brick details in saw tooth or diamond pattern distinguish arches and drop finials decorations are created at ends of certain voussoirs using shaped buff brick;
- all stone window sills and hand carved motifs in the sills

127, 133 and 133A Main Street South
Heritage Impact Assessment Recommendation Report

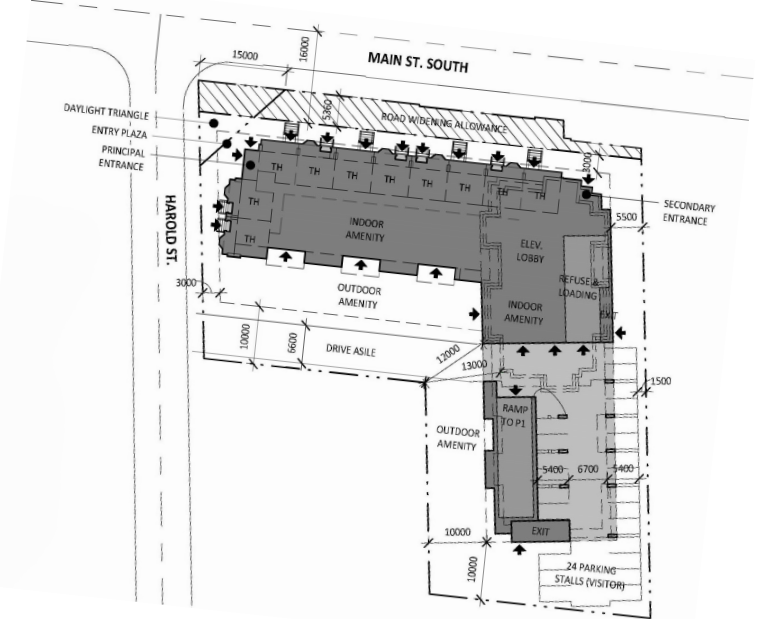
133A Main St S



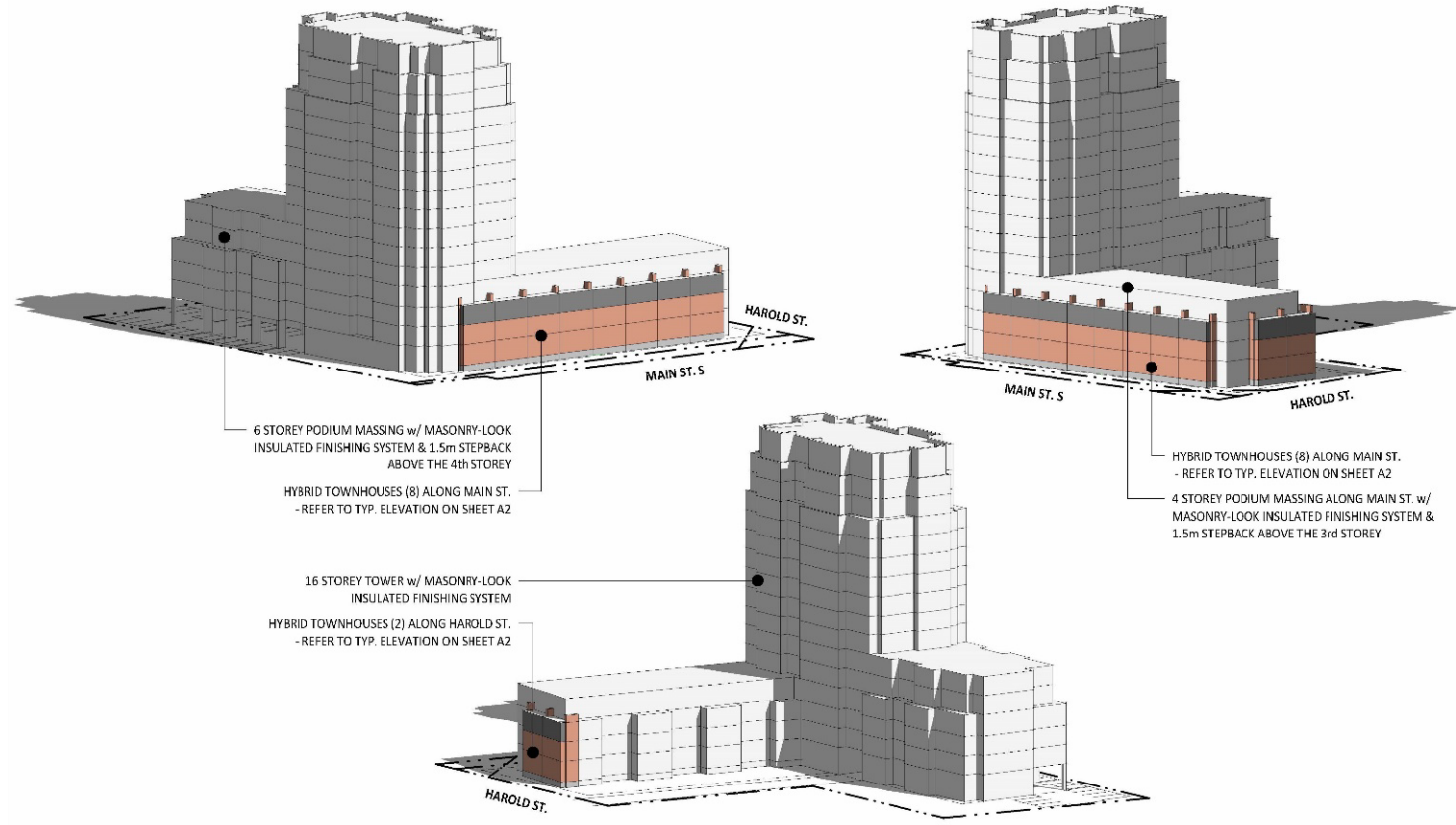
127, 133 and 133A Main Street South Heritage Impact Assessment Recommendation Report



Existing properties and proposed development footprint



Proposed development conceptual plan



Proposed building massing

The proposed development consists of one sixteen storey condominium buildings with six storey podium and hybrid townhouses along Main Street South with four storey massing

Townhouse units are proposed both along Main Street South (8 units) and Harold Street (2 units), with entrances provided from the streetscape. The townhouse design is proposed to incorporate design elements which are reflective of the existing historic dwellings located onsite, so as to pay homage to the site history.

127, 133 and 133A Main Street South Heritage Impact Assessment Recommendation Report



- 1 SPLIT FACE STONE FOUNDATION (BASE)
- 2 RED BRICK CLADDING
- 3 PORCH WITH PLAIN ENTABLATURE AND COLUMNS SITTING ON STONE BASE
- 4 SPLIT FACE STONE WINDOW SILLS & LINTELS
- 5 BUFF BRICK QUOINS
- 6 BUFF BRICK VOUSOIRS
- 7 POLYGONAL BAY WINDOWS
- 8 GOTHIC HEADED OPENING
- 9 RECESSED ARCH ENTRY W/ TRANSOM & SIDELITES



127 MAIN ST. SOUTH



133 MAIN ST. SOUTH

Integration of historic building elements into proposed development