

**PLAN OF SUBDIVISION OF  
PART OF BLOCKS 4 AND 5, PLAN 43M-1431 AND  
PART OF LOT 13,  
CONCESSION 3, EAST OF HURONTARIO STREET  
(GEOGRAPHIC TOWNSHIP OF CHINGUACOUSY)  
CITY OF BRAMPTON  
REGIONAL MUNICIPALITY OF PEEL**

SCALE 1:1000  
0m 10m 20m 30m 40m 50m 60m 70m 80m 90m 100 metres

RADY-PENTEK & EDWARD SURVEYING LTD., O.L.S.

**METRIC**  
DISTANCES AND COORDINATES SHOWN ON THIS PLAN ARE IN METRES  
AND CAN BE CONVERTED TO FEET BY DIVIDING BY 0.3048.

**NOTES**

- DENOTES MONUMENT FOUND
- DENOTES MONUMENT SET
- SIB DENOTES STANDARD IRON BAR
- SSIB DENOTES SHORT STANDARD IRON BAR
- IB DENOTES IRON BAR
- P.I.N. DENOTES PROPERTY IDENTIFIER NUMBER
- (WT) DENOTES WITNESS
- (922) DENOTES SCHAEFFER & DZALDOV LIMITED, O.L.S.
- (JOB) DENOTES J. D. BARNES LIMITED, O.L.S.
- (1225) DENOTES DAVID B. SEARLES SURVEYING LTD., O.L.S.
- PL1 DENOTES PLAN 43R-24833
- PL2 DENOTES PLAN 43R-29411
- PL3 DENOTES PLAN 43R-31190
- PL4 DENOTES PLAN 43M-1431
- SCP DENOTES SPECIFIED CONTROL POINT
- (PCC) DENOTES POINT OF COMPOUND CURVE
- (RPE) DENOTES RADY-PENTEK & EDWARD SURVEYING LTD., O.L.S.
- (1188) DENOTES CHRISTOPHER ANTHONY SEXTON O.L.S.

**BEARING NOTE**

BEARINGS ARE UTM GRID, ZONE 17, NAD83 (ORIGINAL), DERIVED FROM SPECIFIED CONTROL POINTS 04219910109 AND 04219920140.  
COORDINATES ARE UTM ZONE 17, NAD83 (ORIGINAL), TO URBAN ACCURACY PER SEC. 14 (2) OF O. REG. 216/10, AND CANNOT, IN THEMSELVES, BE USED TO RE-ESTABLISH CORNERS OR BOUNDARIES SHOWN ON THIS PLAN.  
POINT ID      NORTHING      EASTING  
SCP 04219910109      4941538.77      598024.18  
SCP 04219920140      4843900.25      599534.75  
DISTANCES ARE GROUND AND CAN BE CONVERTED TO GRID BY MULTIPLYING BY THE COMBINED SCALE FACTOR OF 0.9996768.

**MUNICIPAL APPROVAL**

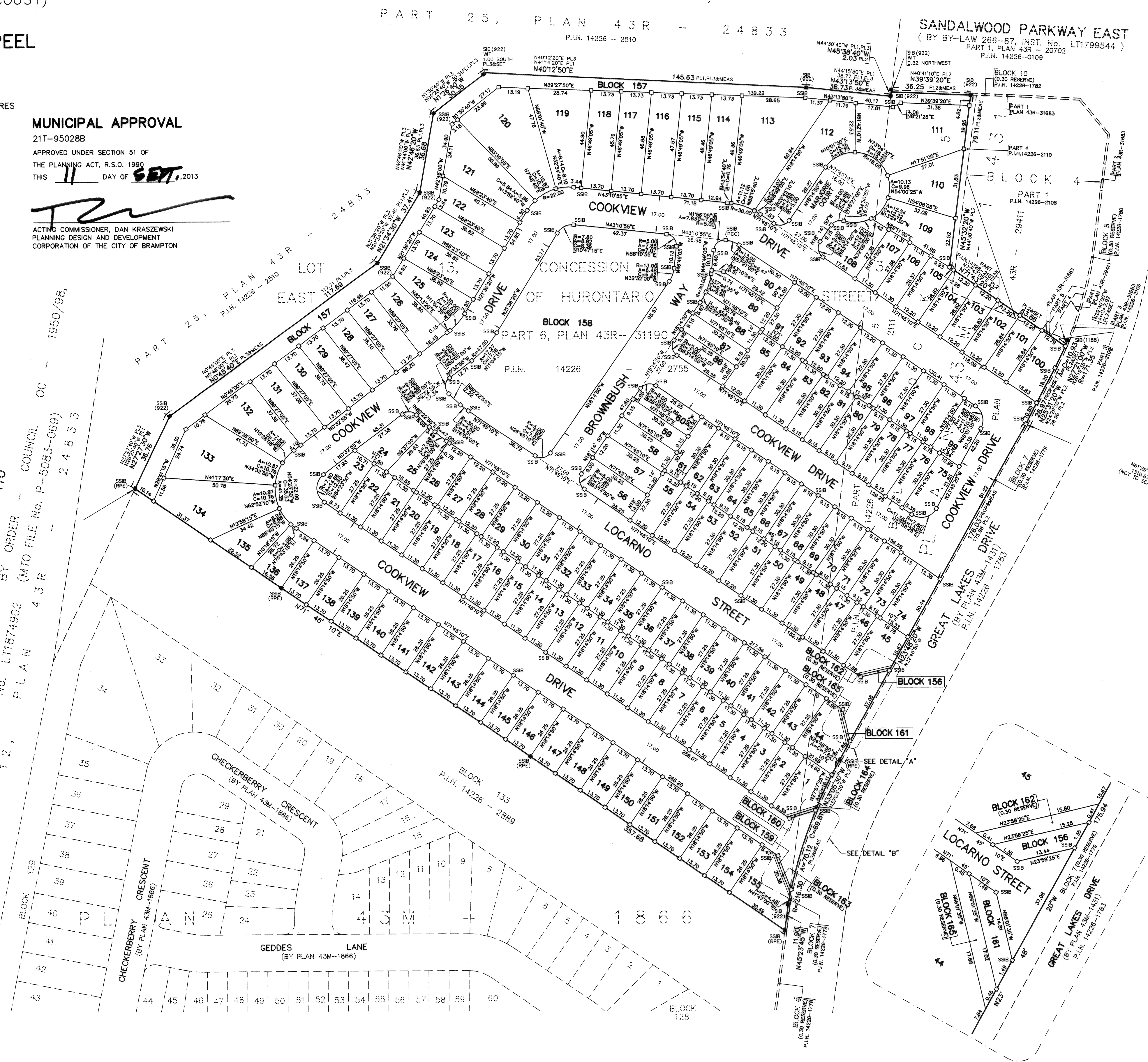
21T-95028B  
APPROVED UNDER SECTION 51 OF  
THE PLANNING ACT, R.S.O. 1990  
THIS 11 DAY OF SEPT, 2013  
*[Signature]*  
ACTING COMMISSIONER, DAN KRASZEWSKI  
PLANNING DESIGN AND DEVELOPMENT  
CORPORATION OF THE CITY OF BRAMPTON

THE KING'S HIGHWAY No. 410  
DESIGNATED AS A CONTROLLED ACCESS HIGHWAY BY ORDER -- COUNCIL OC -- 1950/98,  
INST. No. LT1874902 (MTO FILE No. P-5083-069)

PART 25, PLAN 43R -- 24833  
P.I.N. 14226 - 2510

SANDALWOOD PARKWAY EAST  
(BY BY-LAW 266-87, INST. No. LT1799544)  
PART 1, PLAN 43R -- 20702  
P.I.N. 14226-0109

DESIGNATED AS A CONTROLLED ACCESS HIGHWAY BY ORDER -- COUNCIL OC -- 1950/98,  
INST. No. LT1874902 (MTO FILE No. P-5083-069)  
PART 12, PLAN 43R -- 24833



**OWNER'S CERTIFICATE**

THIS IS TO CERTIFY THAT:  
1. LOTS 1 TO 155, BOTH INCLUSIVE, BLOCKS 156 TO 161 BOTH INCLUSIVE, 0.30 RESERVES, NAMELY BLOCKS 162 TO 165, BOTH INCLUSIVE, STREETS NAMELY BROWNBLUSH WAY, COOKVIEW DRIVE, LOCARNO STREET AND MARJORIE COURT HAVE BEEN LAID OUT IN ACCORDANCE WITH OUR INSTRUCTIONS.

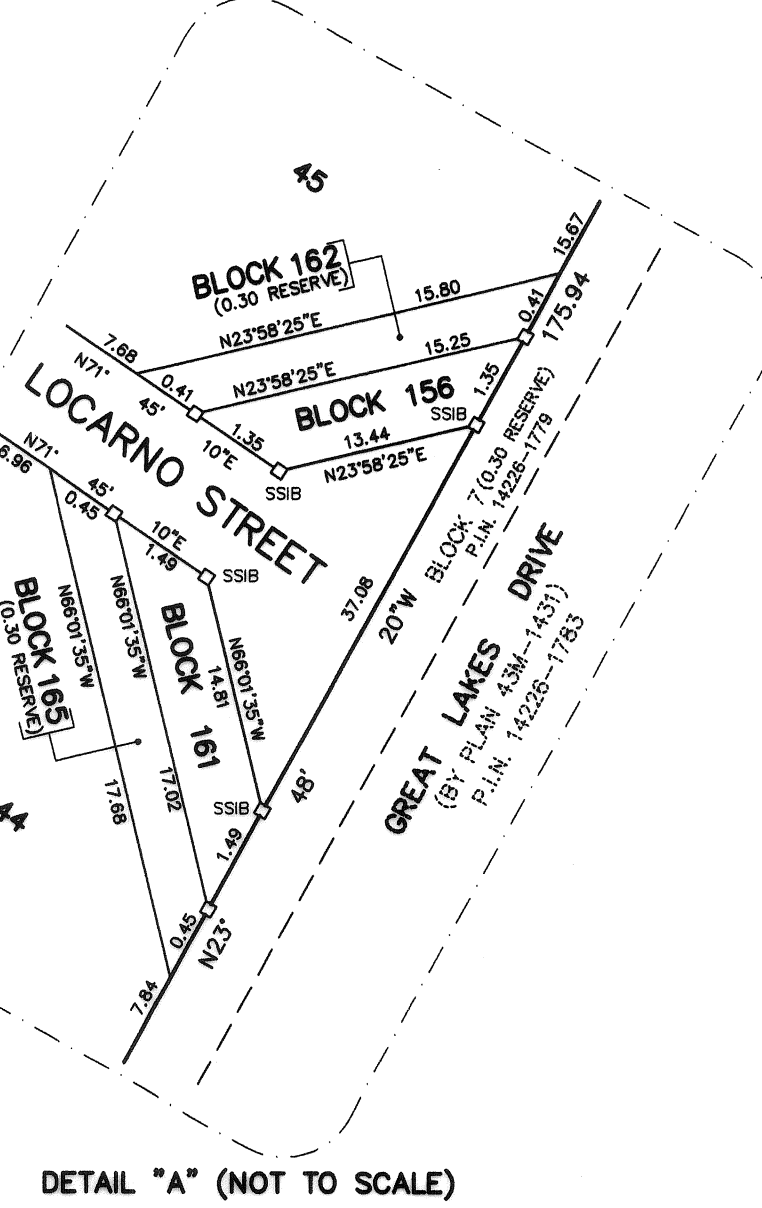
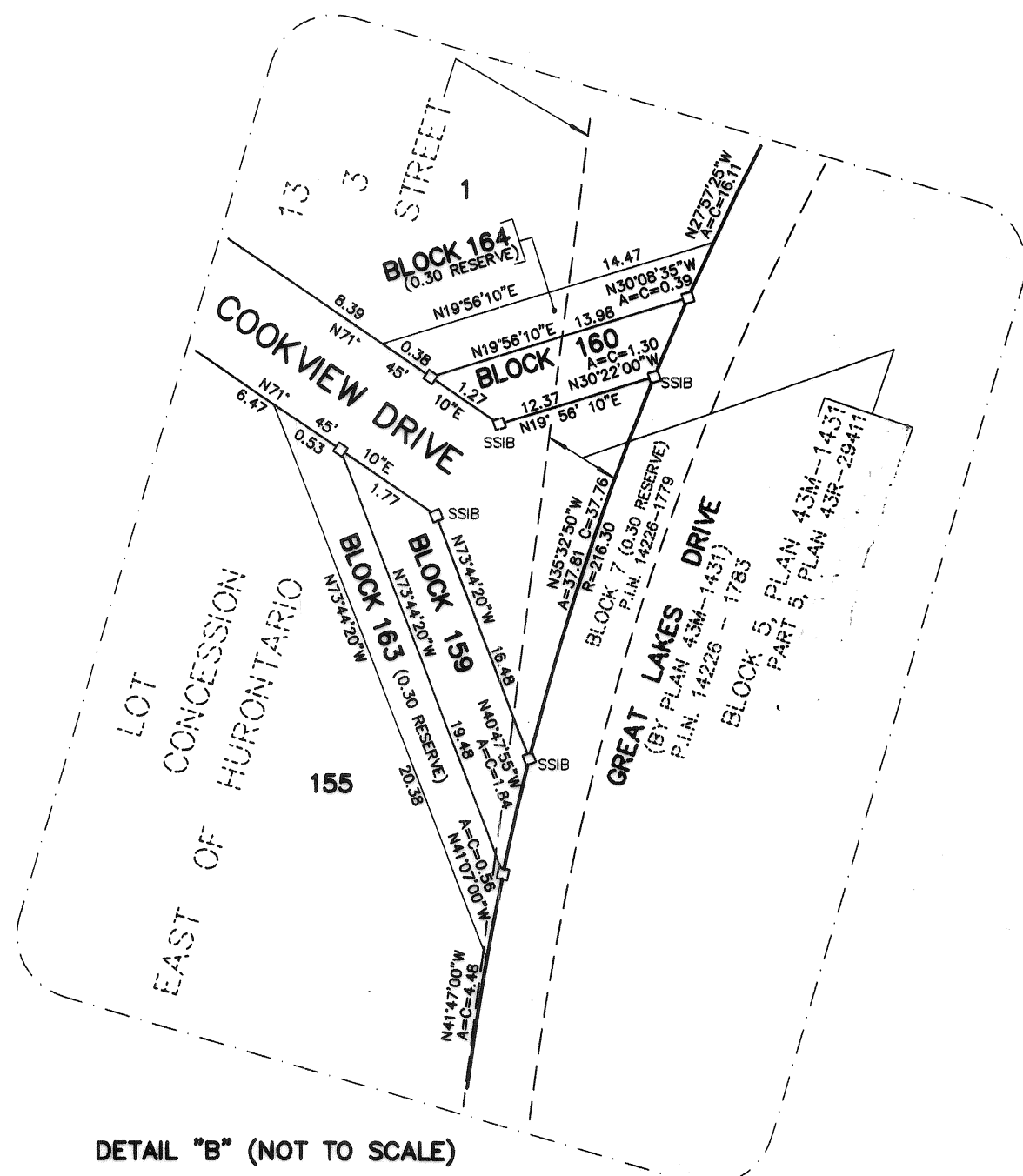
2. THE STREETS ARE HEREBY DEDICATED AS PUBLIC HIGHWAYS TO THE CORPORATION OF THE CITY OF BRAMPTON.

DATED THE 5th DAY OF JUNE, 2013.  
CHINGUACOUSY FARM LIMITED  
*[Signature]*  
SHELDON LUBFELD  
I HAVE THE AUTHORITY TO BIND THE CORPORATION

**SURVEYOR'S CERTIFICATE**

I CERTIFY THAT:  
1. THIS SURVEY AND PLAN ARE CORRECT AND IN ACCORDANCE WITH THE SURVEYS ACT, THE SURVEYORS ACT AND THE LAND TITLES ACT AND THE REGULATIONS MADE UNDER THEM.

2. THE SURVEY WAS COMPLETED ON THE 23<sup>RD</sup> DAY OF NOV, 2011.  
DATE APRIL 19<sup>TH</sup> 2012  
*[Signature]*  
C. P. EDWARD  
ONTARIO LAND SURVEYOR



21T-95028B  
**PLAN 43M-1934**  
I CERTIFY THAT THIS PLAN IS REGISTERED IN THE LAND REGISTRY OFFICE FOR THE LAND TITLES DIVISION OF PEEL (No.43) AT 15:30 O'CLOCK ON THE 12 DAY OF SEP, 2013 AND ENTERED IN REGISTER(S) FOR PROPERTY IDENTIFIER(S) 14226-0109, 14226-0110, 14226-0111, 14226-0112, 14226-0113, 14226-0114, 14226-0115, 14226-0116, 14226-0117, 14226-0118, 14226-0119, 14226-0120, 14226-0121, 14226-0122, 14226-0123, 14226-0124, 14226-0125, 14226-0126, 14226-0127, 14226-0128, 14226-0129, 14226-0130, 14226-0131, 14226-0132, 14226-0133, 14226-0134, 14226-0135, 14226-0136, 14226-0137, 14226-0138, 14226-0139, 14226-0140, 14226-0141, 14226-0142, 14226-0143, 14226-0144, 14226-0145, 14226-0146, 14226-0147, 14226-0148, 14226-0149, 14226-0150, 14226-0151, 14226-0152, 14226-0153, 14226-0154, 14226-0155, 14226-0156, 14226-0157, 14226-0158, 14226-0159, 14226-0160, 14226-0161, 14226-0162, 14226-0163, 14226-0164, 14226-0165, 14226-0166, 14226-0167, 14226-0168, 14226-0169, 14226-0170, 14226-0171, 14226-0172, 14226-0173, 14226-0174, 14226-0175, 14226-0176, 14226-0177, 14226-0178, 14226-0179, 14226-0180, 14226-0181, 14226-0182, 14226-0183, 14226-0184, 14226-0185, 14226-0186, 14226-0187, 14226-0188, 14226-0189, 14226-0190, 14226-0191, 14226-0192, 14226-0193, 14226-0194, 14226-0195, 14226-0196, 14226-0197, 14226-0198, 14226-0199, 14226-0200, 14226-0201, 14226-0202, 14226-0203, 14226-0204, 14226-0205, 14226-0206, 14226-0207, 14226-0208, 14226-0209, 14226-0210, 14226-0211, 14226-0212, 14226-0213, 14226-0214, 14226-0215, 14226-0216, 14226-0217, 14226-0218, 14226-0219, 14226-0220, 14226-0221, 14226-0222, 14226-0223, 14226-0224, 14226-0225, 14226-0226, 14226-0227, 14226-0228, 14226-0229, 14226-0230, 14226-0231, 14226-0232, 14226-0233, 14226-0234, 14226-0235, 14226-0236, 14226-0237, 14226-0238, 14226-0239, 14226-0240, 14226-0241, 14226-0242, 14226-0243, 14226-0244, 14226-0245, 14226-0246, 14226-0247, 14226-0248, 14226-0249, 14226-0250, 14226-0251, 14226-0252, 14226-0253, 14226-0254, 14226-0255, 14226-0256, 14226-0257, 14226-0258, 14226-0259, 14226-0260, 14226-0261, 14226-0262, 14226-0263, 14226-0264, 14226-0265, 14226-0266, 14226-0267, 14226-0268, 14226-0269, 14226-0270, 14226-0271, 14226-0272, 14226-0273, 14226-0274, 14226-0275, 14226-0276, 14226-0277, 14226-0278, 14226-0279, 14226-0280, 14226-0281, 14226-0282, 14226-0283, 14226-0284, 14226-0285, 14226-0286, 14226-0287, 14226-0288, 14226-0289, 14226-0290, 14226-0291, 14226-0292, 14226-0293, 14226-0294, 14226-0295, 14226-0296, 14226-0297, 14226-0298, 14226-0299, 14226-0300, 14226-0301, 14226-0302, 14226-0303, 14226-0304, 14226-0305, 14226-0306, 14226-0307, 14226-0308, 14226-0309, 14226-0310, 14226-0311, 14226-0312, 14226-0313, 14226-0314, 14226-0315, 14226-0316, 14226-0317, 14226-0318, 14226-0319, 14226-0320, 14226-0321, 14226-0322, 14226-0323, 14226-0324, 14226-0325, 14226-0326, 14226-0327, 14226-0328, 14226-0329, 14226-0330, 14226-0331, 14226-0332, 14226-0333, 14226-0334, 14226-0335, 14226-0336, 14226-0337, 14226-0338, 14226-0339, 14226-0340, 14226-0341, 14226-0342, 14226-0343, 14226-0344, 14226-0345, 14226-0346, 14226-0347, 14226-0348, 14226-0349, 14226-0350, 14226-0351, 14226-0352, 14226-0353, 14226-0354, 14226-0355, 14226-0356, 14226-0357, 14226-0358, 14226-0359, 14226-0360, 14226-0361, 14226-0362, 14226-0363, 14226-0364, 14226-0365, 14226-0366, 14226-0367, 14226-0368, 14226-0369, 14226-0370, 14226-0371, 14226-0372, 14226-0373, 14226-0374, 14226-0375, 14226-0376, 14226-0377, 14226-0378, 14226-0379, 14226-0380, 14226-0381, 14226-0382, 14226-0383, 14226-0384, 14226-0385, 14226-0386, 14226-0387, 14226-0388, 14226-0389, 14226-0390, 14226-0391, 14226-0392, 14226-0393, 14226-0394, 14226-0395, 14226-0396, 14226-0397, 14226-0398, 14226-0399, 14226-0400, 14226-0401, 14226-0402, 14226-0403, 14226-0404, 14226-0405, 14226-0406, 14226-0407, 14226-0408, 14226-0409, 14226-0410, 14226-0411, 14226-0412, 14226-0413, 14226-0414, 14226-0415, 14226-0416, 14226-0417, 14226-0418, 14226-0419, 14226-0420, 14226-0421, 14226-0422, 14226-0423, 14226-0424, 14226-0425, 14226-0426, 14226-0427, 14226-0428, 14226-0429, 14226-0430, 14226-0431, 14226-0432, 14226-0433, 14226-0434, 14226-0435, 14226-0436, 14226-0437, 14226-0438, 14226-0439, 14226-0440, 14226-0441, 14226-0442, 14226-0443, 14226-0444, 14226-0445, 14226-0446, 14226-0447, 14226-0448, 14226-0449, 14226-0450, 14226-0451, 14226-0452, 14226-0453, 14226-0454, 14226-0455, 14226-0456, 14226-0457, 14226-0458, 14226-0459, 14226-0460, 14226-0461, 14226-0462, 14226-0463, 14226-0464, 14226-0465, 14226-0466, 14226-0467, 14226-0468, 14226-0469, 14226-0470, 14226-0471, 14226-0472, 14226-0473, 14226-0474, 14226-0475, 14226-0476, 14226-0477, 14226-0478, 14226-0479, 14226-0480, 14226-0481, 14226-0482, 14226-0483, 14226-0484, 14226-0485, 14226-0486, 14226-0487, 14226-0488, 14226-0489, 14226-0490, 14226-0491, 14226-0492, 14226-0493, 14226-0494, 14226-0495, 14226-0496, 14226-0497, 14226-0498, 14226-0499, 14226-0500, 14226-0501, 14226-0502, 14226-0503, 14226-0504, 14226-0505, 14226-0506, 14226-0507, 14226-0508, 14226-0509, 14226-0510, 14226-0511, 14226-0512, 14226-0513, 14226-0514, 14226-0515, 14226-0516, 14226-0517, 14226-0518, 14226-0519, 14226-0520, 14226-0521, 14226-0522, 14226-0523, 14226-0524, 14226-0525, 14226-0526, 14226-0527, 14226-0528, 14226-0529, 14226-0530, 14226-0531, 14226-0532, 14226-0533, 14226-0534, 14226-0535, 14226-0536, 14226-0537, 14226-0538, 14226-0539, 14226-0540, 14226-0541, 14226-0542, 14226-0543, 14226-0544, 14226-0545, 14226-0546, 14226-0547, 14226-0548, 14226-0549, 14226-0550, 14226-0551, 14226-0552, 14226-0553, 14226-0554, 14226-0555, 14226-0556, 14226-0557, 14226-0558, 14226-0559, 14226-0560, 14226-0561, 14226-0562, 14226-0563, 14226-0564, 14226-0565, 14226-0566, 14226-0567, 14226-0568, 14226-0569, 14226-0570, 14226-0571, 14226-0572, 14226-0573, 14226-0574, 14226-0575, 14226-0576, 14226-0577, 14226-0578, 14226-0579, 14226-0580, 14226-0581, 14226-0582, 14226-0583, 14226-0584, 14226-0585, 14226-0586, 14226-0587, 14226-0588, 14226-0589, 14226-0590, 14226-0591, 14226-0592, 14226-0593, 14226-0594, 14226-0595, 14226-0596, 14226-0597, 14226-0598, 14226-0599, 14226-0600, 14226-0601, 14226-0602, 14226-0603, 14226-0604, 14226-0605, 14226-0606, 14226-0607, 14226-0608, 14226-0609, 14226-0610, 14226-0611, 14226-0612, 14226-0613, 14226-0614, 14226-0615, 14226-0616, 14226-0617, 14226-0618, 14226-0619, 14226-0620, 14226-0621, 14226-0622, 14226-0623, 14226-0624, 14226-0625, 14226-0626, 14226-0627, 14226-0628, 14226-0629, 14226-0630, 14226-0631, 14226-0632, 14226-0633, 14226-0634, 14226-0635, 14226-0636, 14226-0637, 14226-0638, 14226-0639, 14226-0640, 14226-0641, 14226-0642, 14226-0643, 14226-0644, 14226-0645, 14226-0646, 14226-0647, 14226-0648, 14226-0649, 14226-0650, 14226-0651, 14226-0652, 14226-0653, 14226-0654, 14226-0655, 14226-0656, 14226-0657, 14226-0658, 14226-0659, 14226-0660, 14226-0661, 14226-0662, 14226-0663, 14226-0664, 14226-0665, 14226-0666, 14226-0667, 14226-0668, 14226-0669, 14226-0670, 14226-0671, 14226-0672, 14226-0673, 14226-0674, 14226-0675, 14226-0676, 14226-0677, 14226-0678, 14226-0679, 14226-0680, 14226-0681, 14226-0682, 14226-0683, 14226-0684, 14226-0685, 14226-0686, 14226-0687, 14226-0688, 14226-0689, 14226-0690, 14226-0691, 14226-0692, 14226-0693, 14226-0694, 14226-0695, 14226-0696, 14226-0697, 14226-0698, 14226-0699, 14226-0700, 14226-0701, 14226-0702, 14226-0703, 14226-0704, 14226-0705, 14226-0706, 14226-0707, 14226-0708, 14226-0709, 14226-0710, 14226-0711, 14226-0712, 14226-0713, 14226-0714, 14226-0715, 14226-0716, 14226-0717, 14226-0718, 14226-0719, 14226-0720, 14226-0721, 14226-0722, 14226-0723, 14226-0724, 14226-0725, 14226-0726, 14226-0727, 14226-0728, 14226-0729, 14226-0730, 14226-0731, 14226-0732, 14226-0733, 14226-0734, 14226-0735, 14226-0736, 14226-0737, 14226-0738, 14226-0739, 14226-0740, 14226-0741, 14226-0742, 14226-0743, 14226-0744, 14226-0745, 14226-0746, 14226-0747, 14226-0748, 14226-0749, 14226-0750, 14226-0751, 14226-0752, 14226-0753, 14226-0754, 14226-0755, 14226-0756, 14226-0757, 14226-0758, 14226-0759, 14226-0760, 14226-0761, 14226-0762, 14226-0763, 14226-0764, 14226-0765, 14226-0766, 14226-0767, 14226-0768, 14226-0769, 14226-0770, 14226-0771, 14226-0772, 14226-0773, 14226-0774, 14226-0775, 14226-0776, 14226-0777, 14226-0778, 14226-0779, 14226-0780, 14226-0781, 14226-0782, 14226-0783, 14226-0784, 14226-0785, 14226-0786, 14226-0787, 14226-0788, 14226-0789, 14226-0790, 14226-0791, 14226-0792, 14226-0793, 14226-0794, 14226-0795, 14226-0796, 14226-0797, 14226-0798, 14226-0799, 14226-0800, 14226-0801, 14226-0802, 14226-0803, 14226-0804, 14226-0805, 14226-0806, 14226-0807, 14226-0808, 14226-0809, 14226-0810, 14226-0811, 14226-0812, 14226-0813, 14226-0814, 14226-0815, 14226-0816, 14226-0817, 14226-0818, 14226-0819, 14226-0820, 14226-0821, 14226-0822, 14226-0823, 14226-0824, 14226-0825, 14226-0826, 14226-0827, 14226-0828, 14226-0829, 14226-0830, 14226-0831, 14226-0832, 14226-0833, 14226-0834, 14226-0835, 14226-0836, 14226-0837, 14226-0838, 14226-0839, 14226-0840, 14226-0841, 14226-0842, 14226-0843, 14226-0844, 14226-0845, 14226-0846, 14226-0847, 14226-0848, 14226-0849, 14226-0850, 14226-0851, 14226-0852, 14226-0853, 14226-0854, 14226-0855, 14226-0856, 14226-0857, 14226-0858, 14226-0859, 14226-0860, 14226-0861, 14226-0862, 14226-0863, 14226-0864, 14226-0865, 14226-0866, 14226-0867, 14226-0868, 14226-0869, 14226-0870, 14226-0871, 14226-0872, 14226-0873, 14226-0874, 14226-0875, 14226-0876, 14226-0877, 14226-0878, 14226-0879, 14226-0880, 14226-0881, 14226-0882, 14226-0883, 14226-0884, 14226-0885, 14226-0886, 14226-0887, 14226-0888, 14226-0889, 14226-0890