

29th March 2026 Peter Enns

Brampton Climate Action Program



SHW Pumps & Engine Components Inc.

Plant Canada – Brampton, Ontario



founded 2014



> 1 Mio pcs/a (2023)



50 employees

Manufacture of Pumps & Engine Components

Products

Oil Pump GM CSS 675T
Oil Pump GM CSS 50T
Oil Pump GM CSS Prime "CCW"
Oil Pump GM CSS Prime "CW"
Oil Pump Ford
Oil-Water Pump Cummins

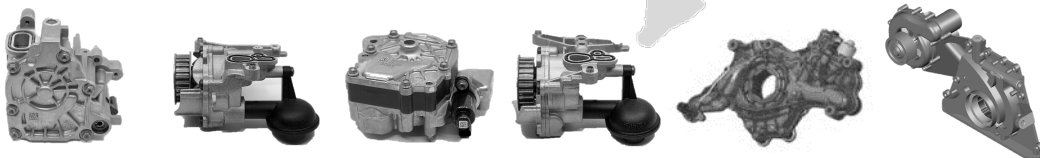
Certification

IATF 16949
ISO 14001
ISO 9001

Management

Chief Operating Officer:
Sebastian Rotermann

General Manager:
Dr. Hilmar Gaertner



Top Customer:



GLOBAL FOOTPRINT

Pankl / SHW worldwide



SHW

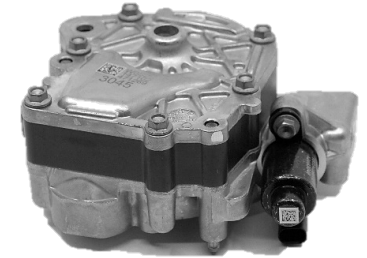
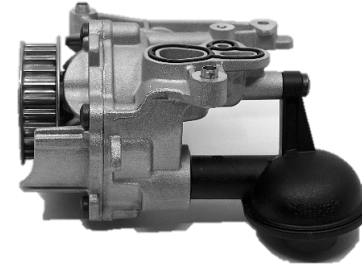
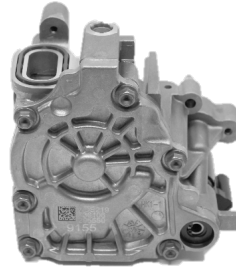
pankl

Aalen | **Bad Schussenried** | Neuhausen ob Eck | Tuttlingen |
Timișoara | **Toronto** | **Sao Paulo** | **Kunshan** | Haimen

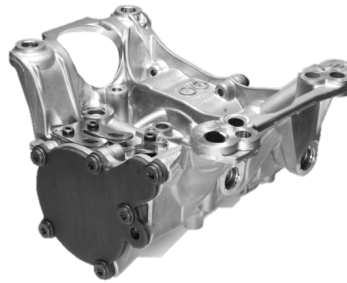
Kapfenberg | Bruck/Mur | Köflach | Mannheim | Topolčany |
Irvine | Cerritos | Leicester | Dalian | Tokyo

An excerpt from SHW's product portfolio

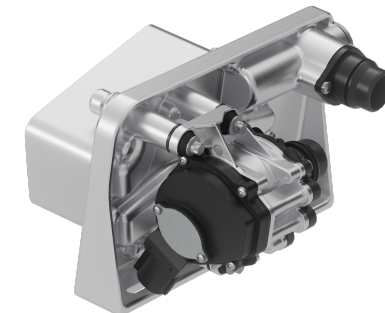
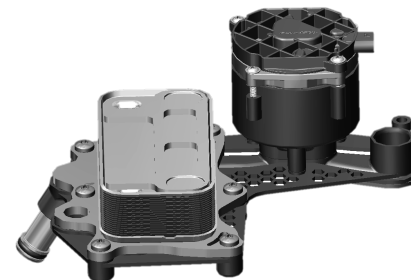
- Variable Oil Pumps
 - Self regulating pressure
 - Valve activated

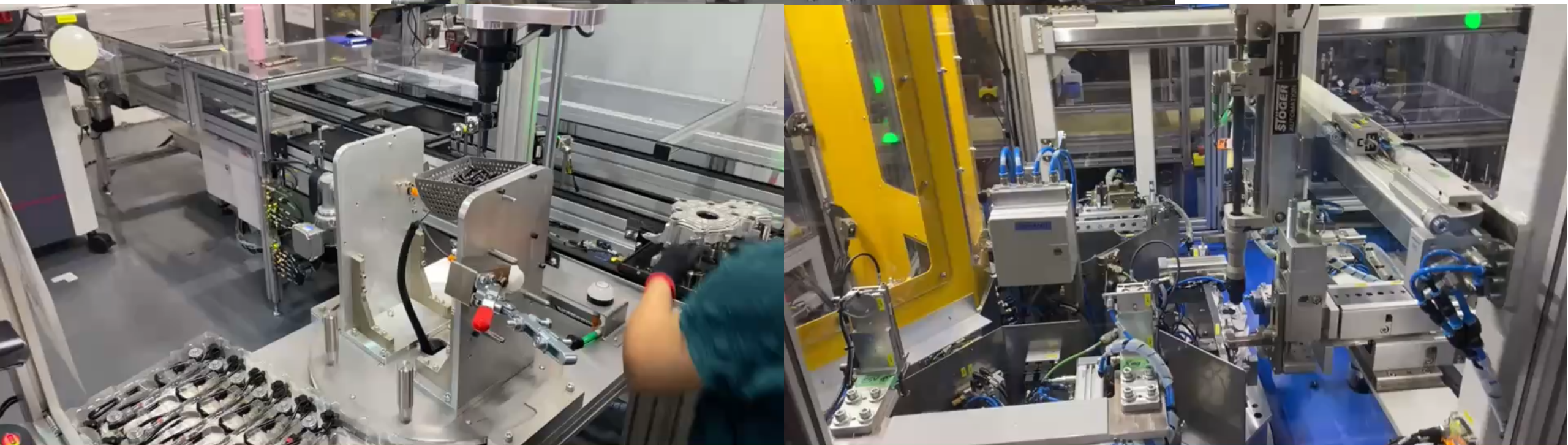
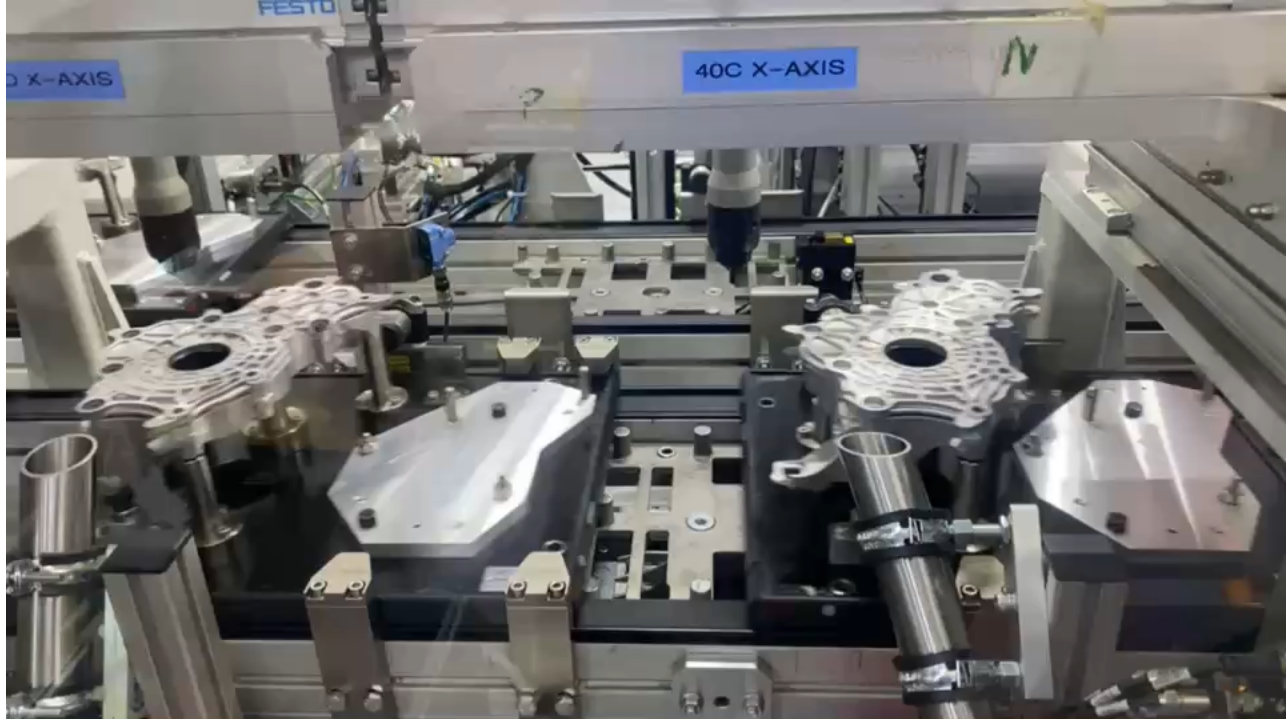


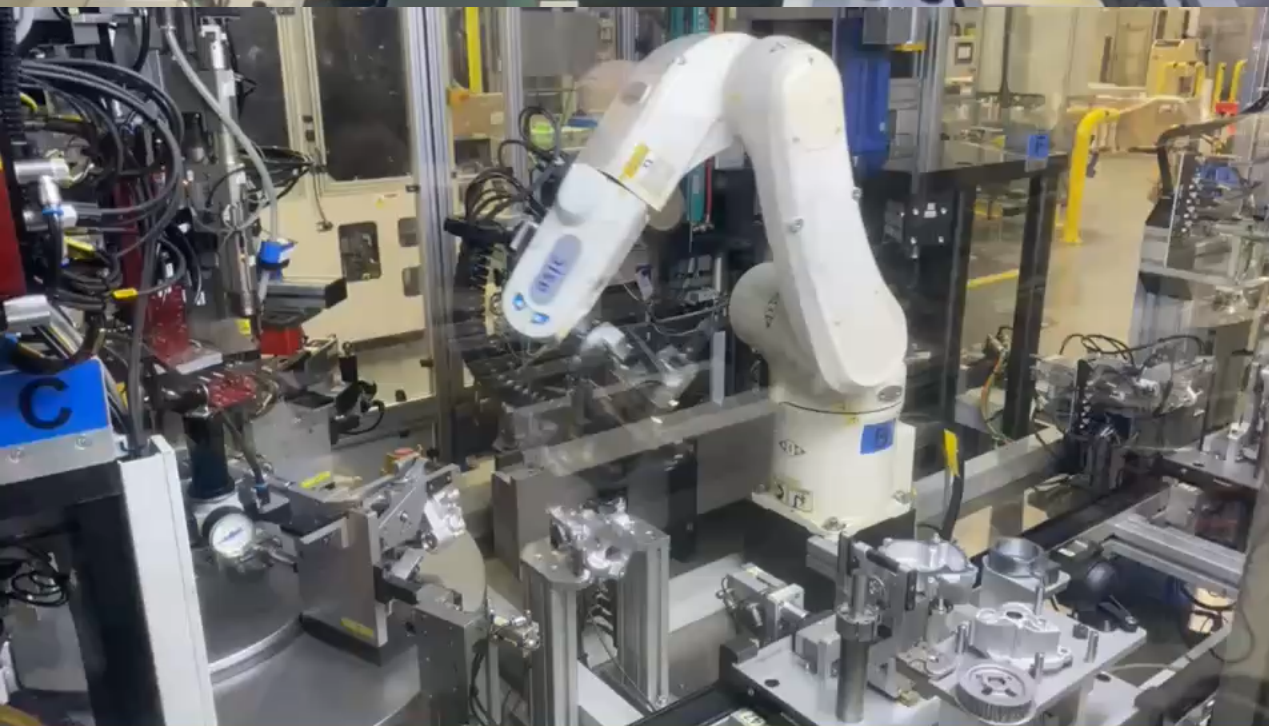
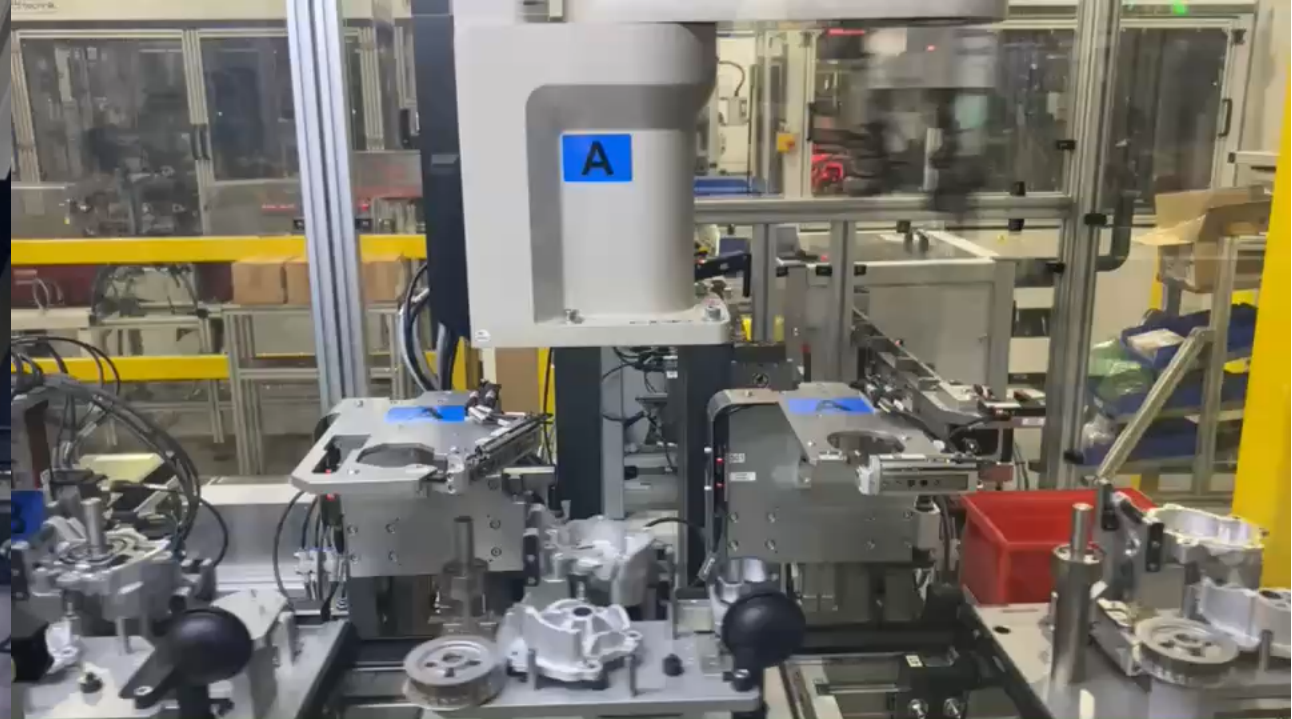
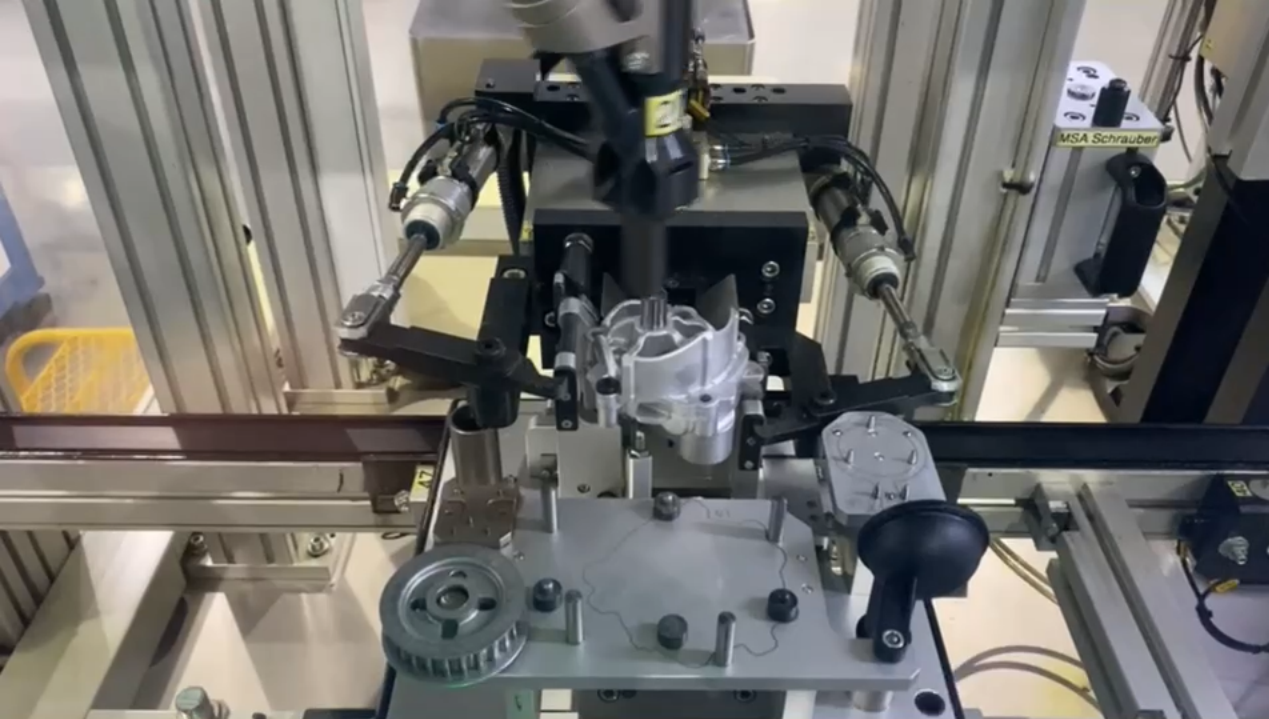
- Multifunction Pumps
 - Two pumps in one unit
 - Oil & Water
 - Oil & Vacuum



- Special Pumps
 - Battery Cooling
 - Thermo modules







The Process

- Save on Energy Website
 - Easy Access
 - Quick overview
 - Easy document upload
- Toronto & Region Conservation Authority
 - Great Support
 - Pilot Program Site Assessment

Executive Summary



7 Energy efficiency & GHG reduction opportunities identified



5 water efficiency opportunities identified



23 corporate flood & heat risk opportunities



TBD m3 potential natural Gas savings



39,781 kWh* potential electricity savings

*Savings may change based on new equipment installed.



1.5 tonnes CO2e* potential GHG reductions

*Only accounting for reductions from estimated electricity savings.



\$50,000 * in incentives

*Some additional incentives through Enbridge Gas programs still TBD.



\$4,972.59 * in annual cost savings

*Cost savings will vary based on actual billed rates. Calculations assumed electricity rate of \$0.125/kWh and natural gas rate of \$0.138/m3.

The Process

- Save on Energy Website
 - Easy Access
 - Quick overview
 - Easy document upload
- Toronto & Region Conservation Authority
 - Great Support
 - Pilot Program Site Assessment

Executive Summary



7 Energy efficiency & GHG reduction

The Trias Energetica concept:
the most sustainable energy is saved energy.



1 Reduce the demand for energy by avoiding waste and implementing energy-saving measures.

fied



unities



2 Use sustainable sources of energy instead of finite fossil fuels.



ngs



3 Produce and use fossil energy as efficiently possible.

ctions



\$50,000 * in incentives

*Some additional incentives through Enbridge Gas programs still TBD.



\$4,972.59 * in annual cost savings

*Cost savings will vary based on actual billed rates. Calculations assumed electricity rate of \$0.125/kWh and natural gas rate of \$0.138/m3.

New Setup with Cost efficient and Energy saving Air Compressors



- RS37N (small compressor)
 - 37HP
 - Power consumption based on demand
- RS75N (big compressor)
 - 75HP
 - Power Consumption based on demand
 - All in One solution
- Automatic Drain
 - Water drain based on amount
- Energy & Cost Savings
 - 500 – 700kg Co2 per year
 - Ca. 1500CAD per Year
 - Local Supplier
 - Recover waste heat





Special Thanks to:

- Matt Brunette
- Andrea Williams
- Clayden Petrie
- Haresh Patel

Also, Thanks to:

