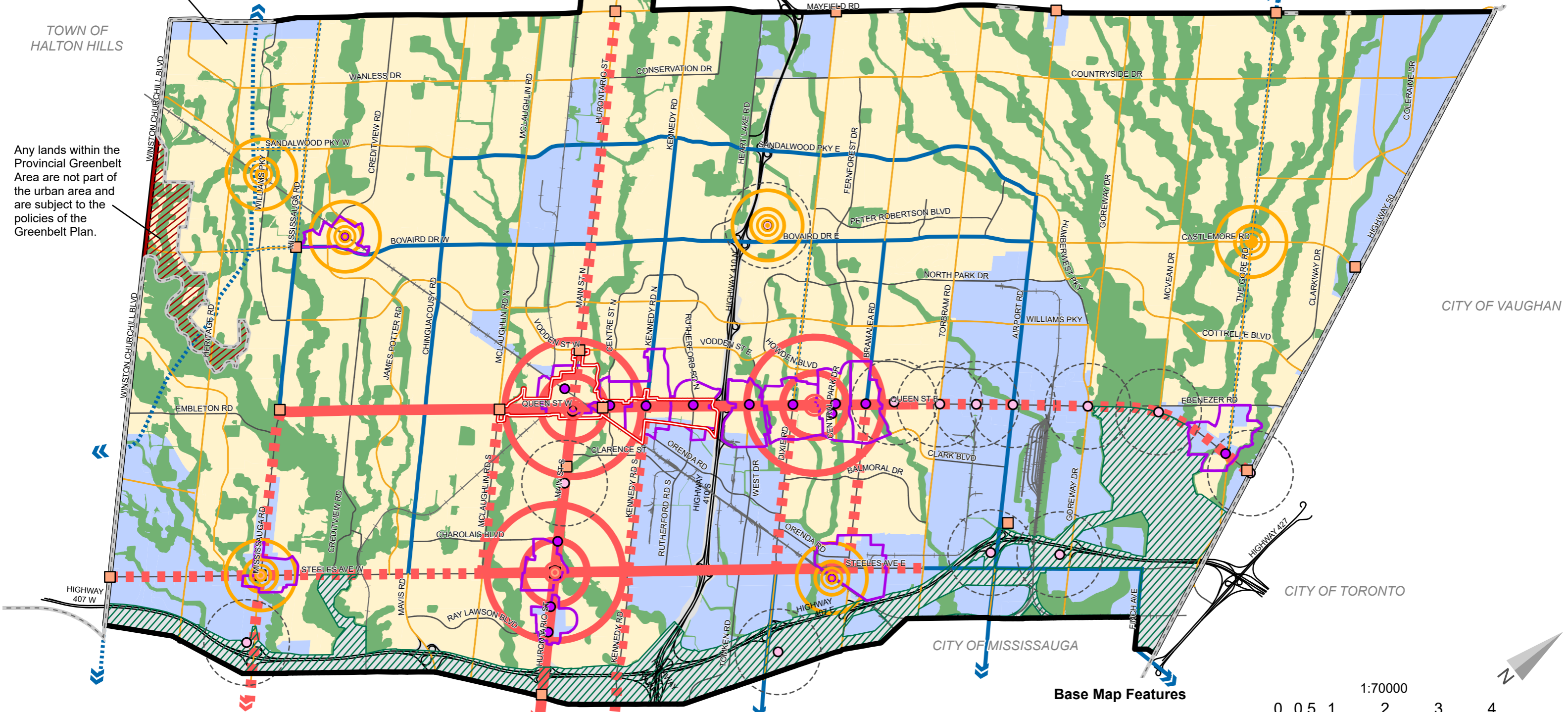


The 'Planned Corridors' overlay identified in the northwestern portion of Brampton reflects the boundaries and alignments of the Highway 413 Focused Analysis Area and the Northwest GTA Transmission Corridor Narrowed Area of Interest.

Streets Network subject to further refinement through Precinct Planning

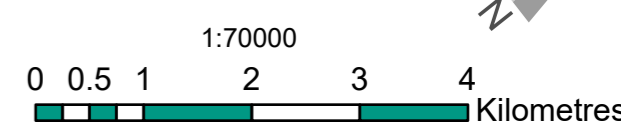
Any lands within the Provincial Greenbelt Area are not part of the urban area and are subject to the policies of the Greenbelt Plan.



- Overlays**
- Natural Heritage System
  - Community Areas
  - Employment Areas
  - Regional Urban Boundary
  - Urban Centres
  - Town Centres
  - Primary Urban Boulevards
  - Secondary Urban Boulevards
  - Corridors
  - Planned Corridors
  - Support Corridor
  - Transit Station
  - Planned Major Transit Station
  - Primary Major Transit Station Areas
  - Urban Growth Centre
  - Gateways
  - Greenbelt Plan

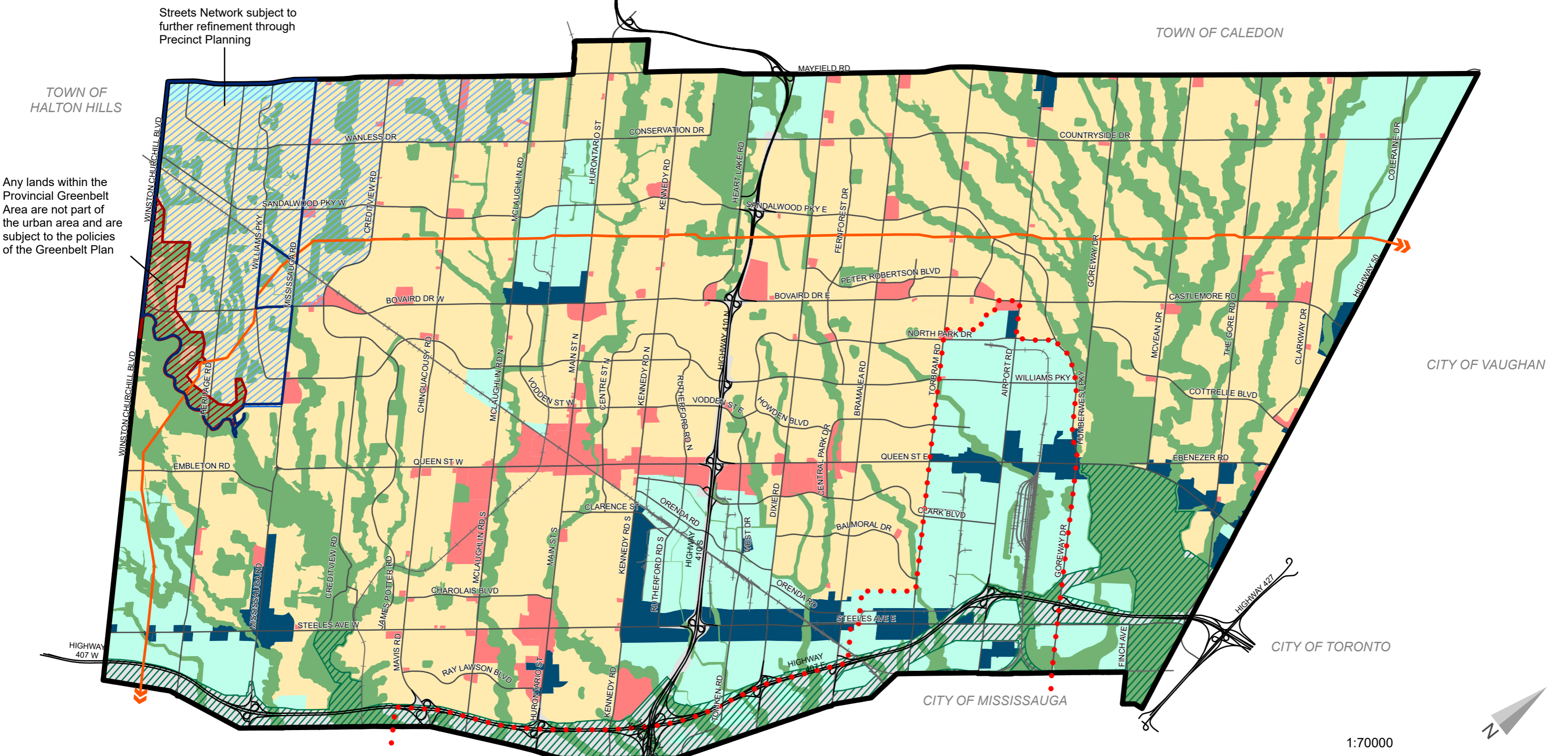
**Base Map Features**

- Railway
- Provincial Highways / Goods Movement Corridors
- Major Streets
- Parkway Belt West



Date: July 2025  
 Planning, Building and Growth Management  
 Brampton Plan

This map forms part of the Official Plan of the City of Brampton and must be read in conjunction with the text, other schedules and secondary plans. The boundaries and alignments of designations and overlays on this schedule are approximate and are not intended to be scaled.



Streets Network subject to further refinement through Precinct Planning

Any lands within the Provincial Greenbelt Area are not part of the urban area and are subject to the policies of the Greenbelt Plan

TOWN OF CALEDON

TOWN OF HALTON HILLS

CITY OF VAUGHAN

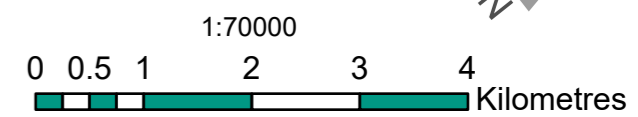
CITY OF TORONTO

CITY OF MISSISSAUGA

- Designations**
- Mixed Use
  - Neighbourhoods
  - Employment
  - Mixed-Use Employment
  - Rural Land
  - Natural Heritage System
  - Parkway Belt West

- Overlays**
- Lester B. Pearson International Airport (LBPIA) Operating Area
  - Greenbelt Plan
  - TransCanada Pipeline
  - Heritage Heights Secondary Plan Area
  - Northwest Brampton Development Area

- Base Map Features**
- Railway
  - Highway
  - Provincial Highways / Goods Movement Corridors
  - Major Streets



Date: July 2025  
 Planning, Building and Growth Management  
 Brampton Plan

This map forms part of the Official Plan of the City of Brampton and must be read in conjunction with the text, other schedules and secondary plans. The boundaries and alignments of designations and overlays on this schedule are approximate and are not intended to be scaled.

# SCHEDULE 2 | DESIGNATIONS

