

243 and 245 Main Street North



Table 1: Characteristics of Gothic Revival Architecture
 (Adapted from McAlester 1984; Ricketts et al. 2011; Kyles 2016; Mace 2013)

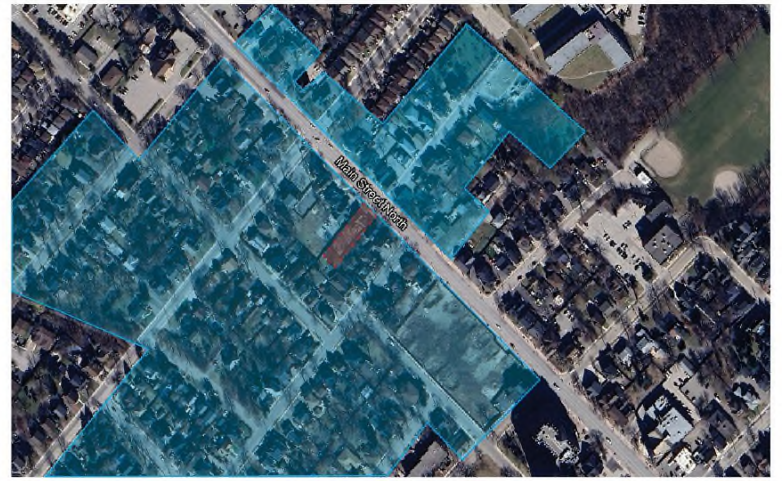
Characteristics of Gothic Revival Architecture	Characteristics of 243-245 Main Street North
One-and-a-half to two-storeys	Yes – Two-storeys
Rectangle, L-shaped or T-shaped plan	Yes – L-shaped
Generally symmetrical from part to part, though independent parts might be assembled irregularly	Yes
Dichromatic brickwork (often expressed in voussoirs, quoins, or brick banding)	Yes
Steeply pitched gables and roof	Yes
Multiple gables	Yes
Vertical emphasis	Yes
Projecting or recessed bays	Yes – Projecting bay
Pointed arches for windows and entrances	No
Porches with split post and a shallow roof that spans the facade	Yes
Decorative woodwork (expressed in finials, trim, vergeboard, verandahs or entrances)	Yes



- Two-storey dichromatic brick Gothic Revival residence constructed to an L-shaped plan
- Red brick cladding laid in a stretcher bond pattern
- Buff brick diamond-shaped detailing beneath gable peaks, voussoirs arranged to mimic a hood mould, and panel of corbelled bricks at the base of bay windows
- Cross gable roof with decorative vergeboard and brackets in the gable peaks designed in lace and geometric patterns
- Projecting polygonal bays on the east elevation and the west side of the north façade
- Tall, segmentally arched window openings with lug sills
- Rectangular stained-glass transom with a buff brick voussoir over the entrance
- Covered porch along the façade decorated with spindle work and scrolled brackets supported by square wood posts with geometric belusters



Heritage Attributes (1 of 3)
 243-245 Main Street North
 City of Brampton



- Two-storey dichromatic brick Gothic Revival residence constructed to an L-shaped plan
- Contribution to the Washington Block neighbourhood with a modest setback from Main Street North on a long, narrow, rectangular lot

ARA
ARCHAEOLOGY | HERITAGE | OUTREACH | EDUCATION
 Heritage Attributes (3 of 3)
 243-245 Main Street North
 City of Brampton

- Two-storey dichromatic brick Gothic Revival residence constructed to an L-shaped plan
- Red brick cladding laid in a stretcher bond pattern
- Buff brick diamond-shaped detailing beneath gable peaks, voussiors arranged to mimic a hood mould, and panel of corbelled bricks at the base of bay windows
- Cross gable roof with decorative vergeboard and brackets in the gable peaks designed in lace and geometric patterns
- Projecting polygonal bays on the east elevation and the west side of the north façade
- Single red brick chimney with a corbelled brick cap
- Tall, segmentally arched window openings with lug sills
- Segmentally arched basement window openings with red brick voussiors
- Covered porch along the façade decorated with spindle work and scrolled brackets supported by square wood posts with geometric balusters

ARA
ARCHAEOLOGY | HERITAGE | OUTREACH | EDUCATION
 Heritage Attributes (2 of 3)
 243-245 Main Street North
 City of Brampton