

3 Isabella Street

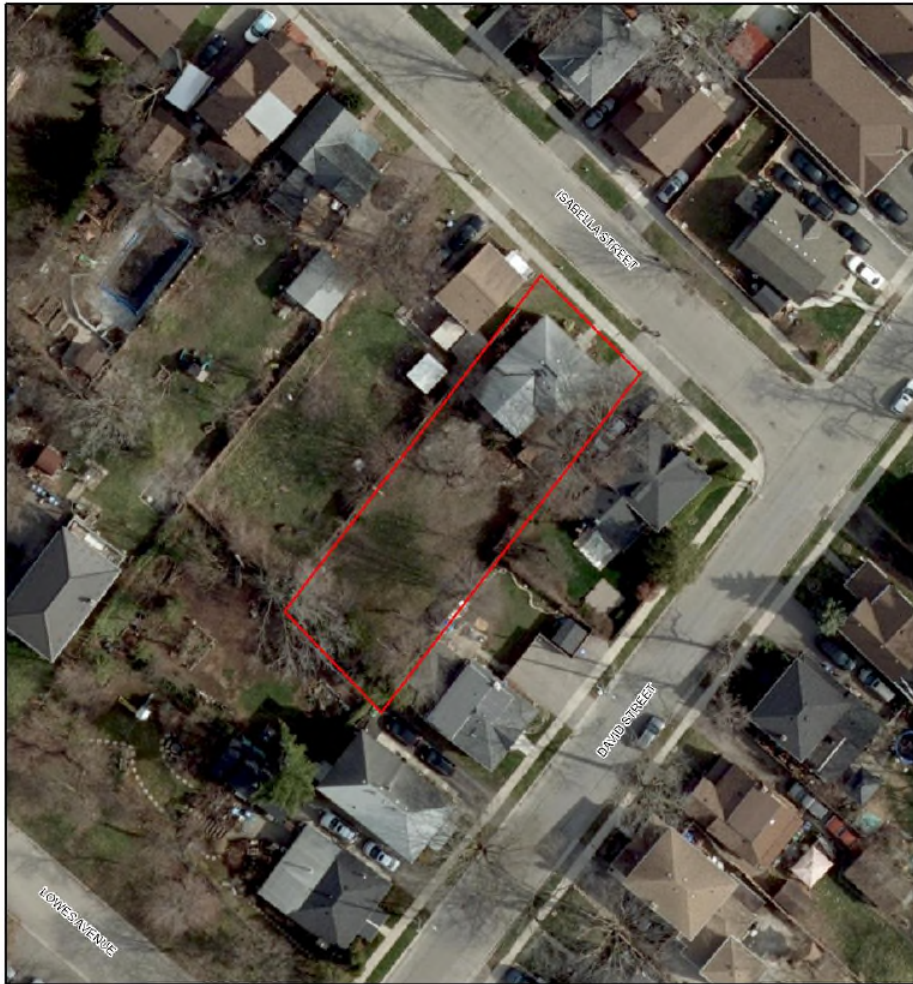

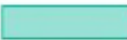






Table 1: Characteristics of Ontario Regency Cottages
(Adapted from Fram 2003; Kyles 2016; HRC 2009)

Characteristics of Ontario Regency Cottages	Characteristics of 3 Isabella Street
One to one-and-a-half storeys	Yes – One-Storey
Overall horizontal and low profile	Yes
Unadorned entranceway	No
Hip of gable roof (typically hip roof) with broad eaves	Yes – Hip Roof
Symmetrical (plans and elevation)	Yes
Verandah and porches	No
Commonly built in brick or stucco	Possible (stucco may remain beneath siding)
Mouldings, windows and/or "French Doors," typically classically design-based	Yes
Wooden trellages support the sometimes upswept-curved (bell case) verandah roof	No
Central entranceway, often with sidelights and transom	Yes – Transom only



-  One-storey, frame, nearly symmetrical three-bay Ontario Regency Cottage constructed to a square plan
-  Hip roof with overhanging eaves
-  Dentilated Meze

-  Rectangular window openings with moulded wood window surrounds with a triangular detail
-  Central entrance with a wood entablature with capped wood pilasters and an architrave decorated with dentils above a rectangular transom
-  Contribution to the Washington Block with overall massing, decorative details, and a shallow setback from Isabella Street on a narrow, rectangular lot