

51 David Street

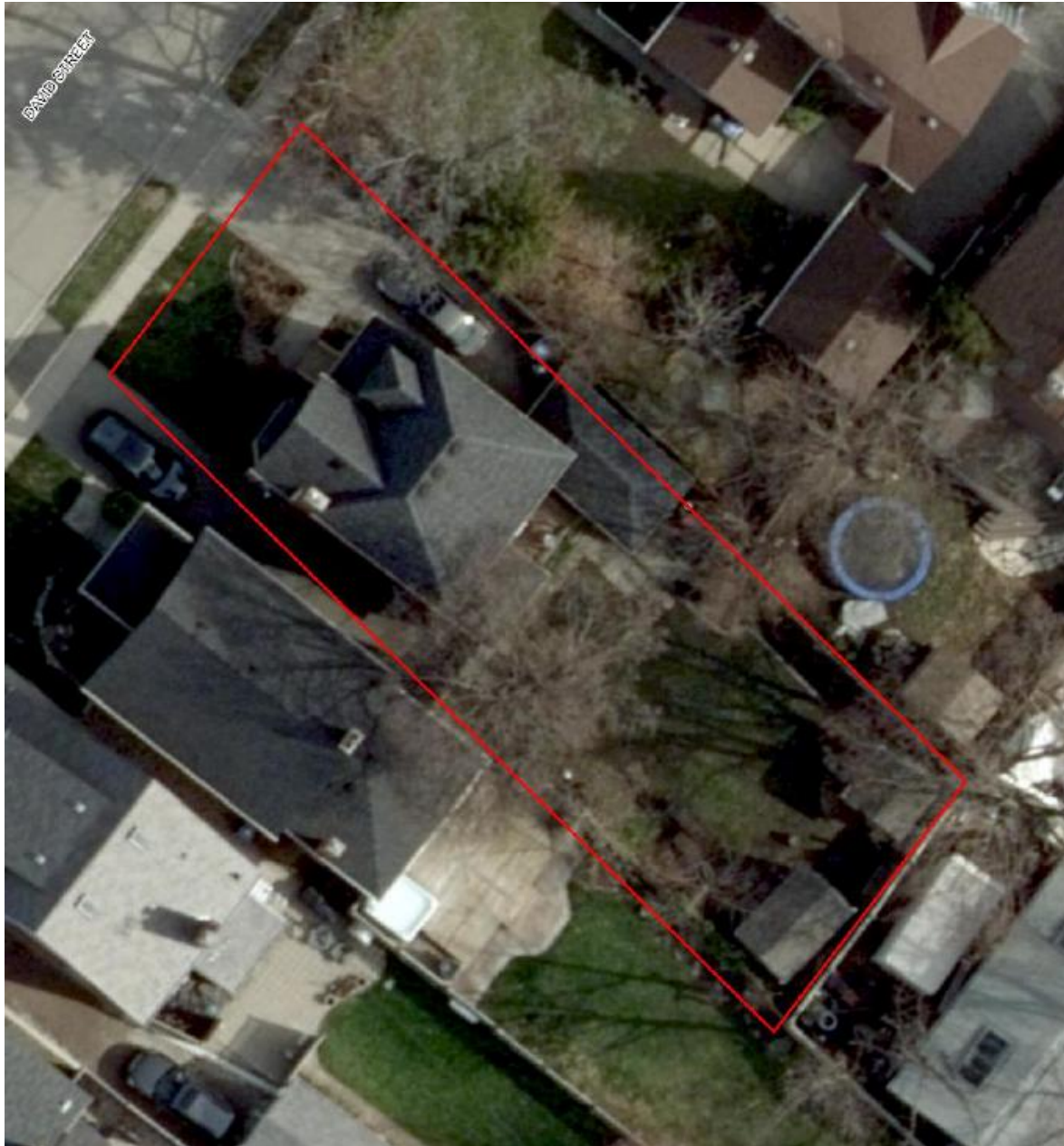


Table 1: Characteristics of Tudor Revival Architecture

(Adapted from Blumenson 1990; Kyles 2016; Fram 2003; Ricketts et al. 2011; McAlester 1984)

Characteristics of Tudor Revival Architecture	Characteristics of 51 David Street
One-and-a-half to two-and-a-half storeys	Yes – Two
Asymmetrical massing	Yes
Steeply pitched roof	Yes
Cross gable roof with dormers (sometimes clipped or jerkin head roofs)	Yes
Façade dominated by one or more prominent gable ends	Yes
Half-timbered decorative treatment (typically wood stain dark with stucco infill)	No
Large and elaborate chimneys	Yes
Tall narrow windows	Yes – Bay window
Bay windows	Yes
Leaded glass detailing	Yes
Windows usually grouped (in strings of three or more)	Partially – Bay window
Multi-pane glazing on windows	No
Formal front entrance recessed or detailed surrounds	Yes
Patterned brickwork or stonework	Yes
Wrought iron ornamentation or hardware	No

