

# Traffic Safety Updates Community Safety Advisory Committee

April 23, 2026

# Leading the Way

Brampton, one of Canada's fastest-growing large cities, is at the forefront of street safety initiatives.



## Safety Zones

210 Community Safety Zones with increased fines for speeding and other HTA offences



## Speed Control

Speed cushions at 150+ locations and 15 reduced neighbourhood speed limits



## Vulnerable Road User Safety

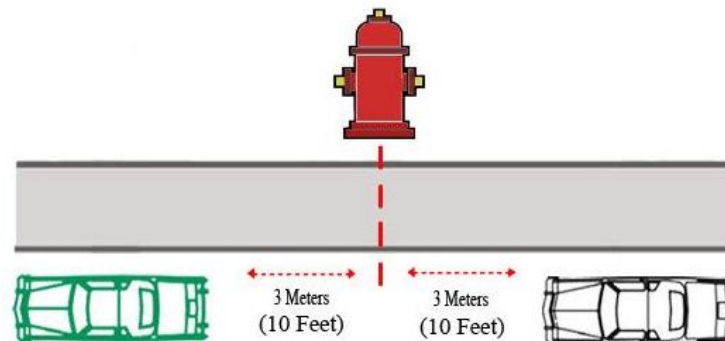
Improved pedestrian crossovers, cycling lanes and road diets. 200 school crossings and 254 school crossing guards

# The Basics

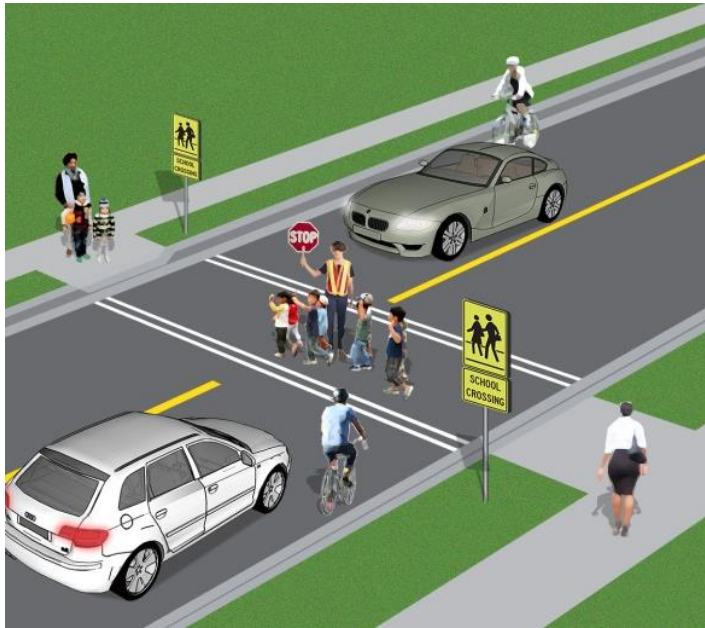


Parking is not permitted:

- Within 3 metres of a Fire Hydrant
- Within 9 metres of an intersection
- Within a Bike Lane
- During a winter event



# Types of Crossing



School Crossing



Pedestrian Crossover



Pedestrian Crosswalk at Traffic Light

# School Crossing



A school crossing is any pedestrian crossing where a:

- school crossing guard is present
- school crossing stop sign is displayed

Crossings are easily identified by the yellow-green fluorescent “school crossing” signs.

At school crossings, drivers are only required to stop and yield the entire roadway when a school crossing guard is present.



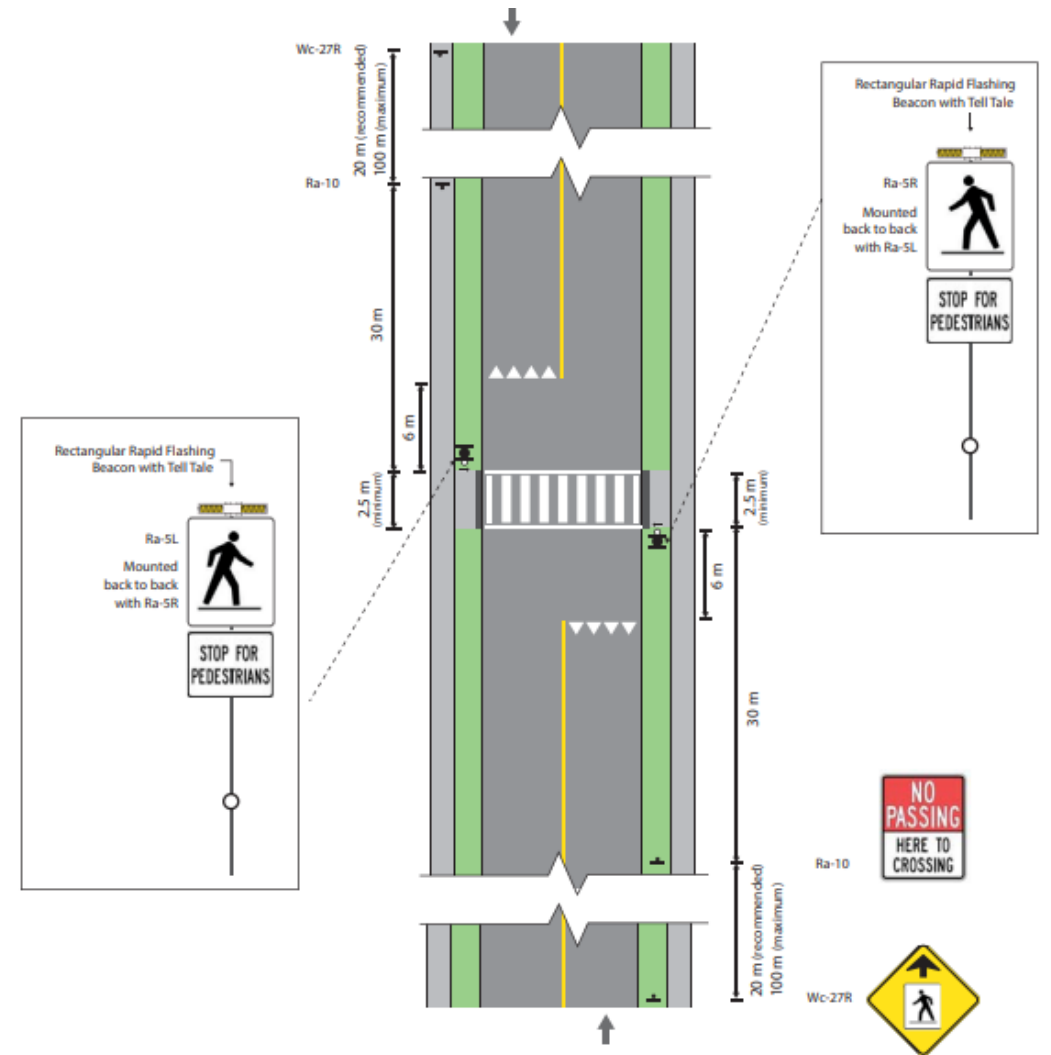
# Pedestrian Crossovers



## Types:

- **Type B:** Overhead and side-mounted signs + flashing beacons.
  - **Type C:** Side-mounted signs + flashing beacons.
  - **Type D:** Side-mounted signs only (no flashing beacons).
- Motorists must stop for pedestrians at all times of the day and yield the entire roadway.
  - Features enhanced pavement markings, signage and lighting.
  - Pedestrians using a Pedestrian Crossover should point across the road in the direction they are walking to clearly indicate their intention to motorists.
  - School Crossing Guards may also be present at these locations.

# Pedestrian Crossovers



# Pedestrian Crosswalks at Traffic Lights



Pedestrian signals help pedestrians cross at intersections with traffic lights.

A pedestrian facing a walk signal may cross the road in the direction of the signal.

A pedestrian facing a flashing or steady hand symbol should not begin to cross the road.

Pedestrians who have already begun to cross when the hand signal appears can finish crossing.



For  
Pedestrians  
Only



For  
Vehicles/  
Cyclists  
only

# Safety in School Zones

## School Bus Safety



- Drivers in both directions must stop.
- If you are behind the bus, stop at least 20 metres back.
- If the bus is coming toward you, stop far enough away to let children get on or off safely and cross the road.
- Use the bus to cross the road during pick-up and drop-off.

## School Zone Signs



Cannot park but can stop briefly to load/unload



Cannot stop, even momentarily to load/unload

## Walk or Bike to School



# Provincial E-Scooter Pilot

## E-Scooter Safety

Breaking down the basics of electric scooters in Ontario.



### E-Scooter Requirements

E-scooters must have:

- two wheels (one on the front, one on the back)
- brakes
- a platform for standing
- a handlebar for steering
- a horn or bell
- at least one white light on front, one red light on rear and reflective material on sides
- maximum 500W electric motor and maximum speed of 24 km/h

E-scooters must not have:

- pedals
- a seat
- a basket
- any motor modifications

### Consequences

- Similar to bicycles, all *Highway Traffic Act* rules of the road apply when riding e-scooters.
- Violations can result in fines and penalties.
- Impaired operation is illegal.

### Rider Requirements

You must:

- be at least 16 years old
- always stand while riding
- wear a bicycle helmet if under 18 years old

You are not permitted to:

- carry passengers
- carry cargo
- park in areas designated for vehicles or pedestrians
- operate an e-scooter on controlled access highways

### Reminders

- E-scooters cannot be used on municipal roads without a bylaw. Check your local municipality to see if and where you can ride.
- Use bicycle lanes (where available).
- Yield to cyclists and pedestrians.

### More Information

[Ontario.ca/Escooters](https://ontario.ca/Escooters)

## Where can E-Scooters be Used in Brampton?

- On roadways with a speed limit of 50 km/h or less
- Within Bike Lanes
- On Multi-use Paths
  
- E-scooters are not permitted to be used on the sidewalk.

# TRAFFIC CALMING INITIATIVES



Speed  
Cushions



In-Road Flexible  
Traffic Calming  
Sign

# TRAFFIC CALMING INITIATIVES



Neighbourhood  
Speed Limits



Roundabouts



Horizontal  
Deflection

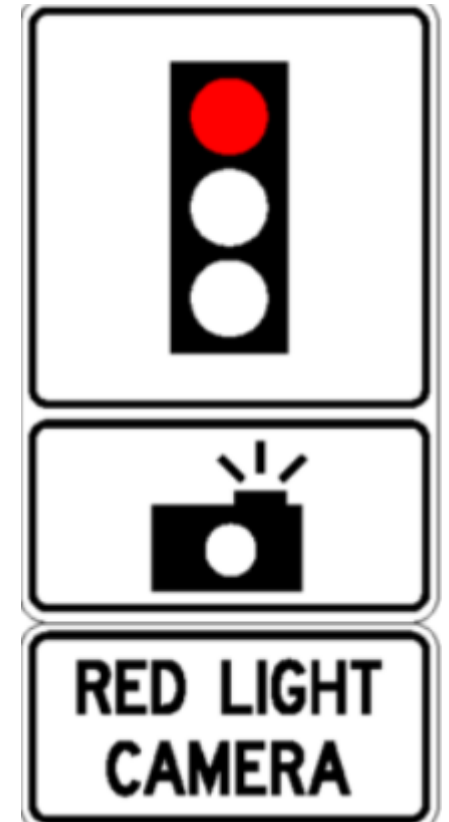
# TRAFFIC CALMING INITIATIVES



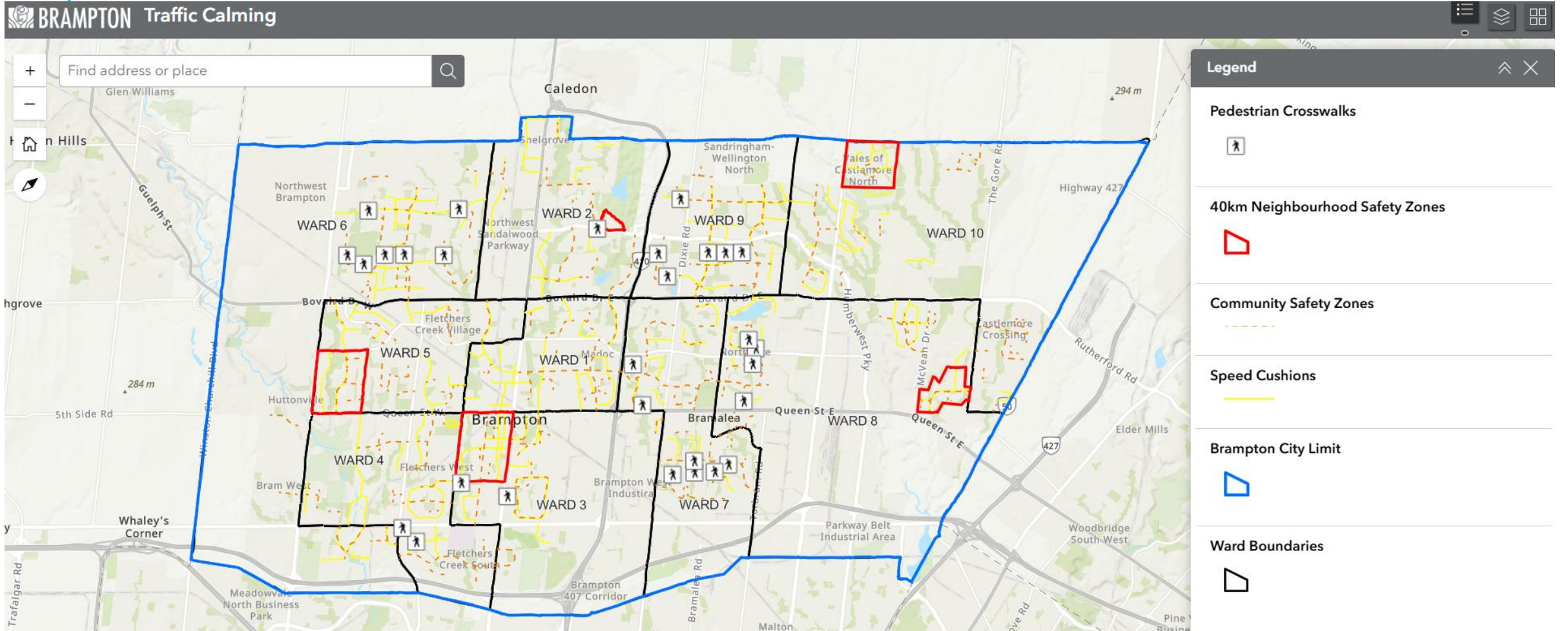
Road Diets



Raised Intersection



# Traffic Calming Map



Thank you!

