

I CERTIFY THAT THIS PLAN IS REGISTERED IN THE LAND REGISTRY OFFICE FOR THE LAND TITLES DIVISION OF PEEL (No.43) AT 2:50 O'CLOCK ON THE 29th DAY OF May, 2012 AND ENTERED IN REGISTER(S) FOR PROPERTY IDENTIFIER 14226-2439 14226-2511 AND THE REQUIRED CONSENTS ARE REGISTERED AS PLAN DOCUMENT No. PR 2201585

J. Morrison
REPRESENTATIVE FOR LAND REGISTRAR

THIS PLAN COMPRISES ALL OF P.I.N. 14226-2439 AND ALL OF P.I.N. 14226-2511 SUBJECT TO AN EASEMENT AS SET OUT IN INST. NO. CH2554 (AFFECTS ALL OF BLOCKS 118 AND 122 AND PARTS OF BLOCK 123, BLOCK 131 (STREET WIDENING) HEARTMEW ROAD AND BRUSSELS AVENUE)

PLAN OF SUBDIVISION OF PART OF LOTS 12 AND 13, CONCESSION 3, EAST OF HURONTARIO STREET (GEOGRAPHIC TOWNSHIP OF CHINGUACOUSY) CITY OF BRAMPTON REGIONAL MUNICIPALITY OF PEEL

SCALE 1:1000
RADI-PENK & EDWARD SURVEYING LTD., O.L.S.
METRIC DISTANCES SHOWN ON THIS PLAN ARE IN METRES AND CAN BE CONVERTED TO FEET BY DIVIDING BY 0.3048.

OWNER'S CERTIFICATE

THIS IS TO CERTIFY THAT:
1. LOTS 1 TO 115, BOTH INCLUSIVE, BLOCKS 116 TO 130, BOTH INCLUSIVE, STREET WIDENING, NAMELY BLOCK 131, 0.30 RESERVE NAMELY BLOCK 132 STREETS, NAMELY BRUSSELS AVENUE, DOCKSIDE COURT, GULFBROOK CIRCLE AND HEARTMEW ROAD HAVE BEEN LAID OUT IN ACCORDANCE WITH OUR INSTRUCTIONS.
2. THE STREETS AND STREET WIDENING NAMELY BLOCK 131 ARE HEREBY DEDICATED AS PUBLIC HIGHWAYS TO THE CORPORATION OF THE CITY OF BRAMPTON.

DATED THE 14th DAY OF FEB, 2012.
CHINGUACOUSY FARM LIMITED

Mark Libfeld
MARK LIBFELD
I HAVE THE AUTHORITY TO BIND THE CORPORATION

SURVEYOR'S CERTIFICATE

I CERTIFY THAT:
1. THIS SURVEY AND PLAN ARE CORRECT AND IN ACCORDANCE WITH THE SURVEYS ACT, THE SURVEYORS ACT AND THE LAND TITLES ACT AND THE REGULATIONS MADE UNDER THEM.
2. THE SURVEY WAS COMPLETED ON THE 25th DAY OF Nov, 2011.

DATE Dec 1st 2011
C. P. EDWARD
ONTARIO LAND SURVEYOR

NOTES

- DENOTES MONUMENT FOUND
- DENOTES MONUMENT SET
- SSB DENOTES STANDARD IRON BAR
- SSSB DENOTES SHORT STANDARD IRON BAR
- IB DENOTES IRON BAR
- P.I.N. DENOTES PROPERTY IDENTIFIER NUMBER
- (WT) DENOTES WITNESS
- (922) DENOTES SCHAEFFER, DZALDOV LIMITED, O.L.S.
- (1225) DENOTES DAVID SEARLES SURVEYING LTD., O.L.S.
- (1110) DENOTES ROBERT DOUGLAS TOMLINSON O.L.S.
- (JOB) DENOTES J. D. BARNES LIMITED O.L.S.
- PL1 DENOTES PLAN 43R-31190
- PL2 DENOTES PLAN 43M-1680
- PL3 DENOTES PLAN 43R-24833
- PL4 DENOTES PLAN 43R-20990
- SCP DENOTES SPECIFIED CONTROL POINT

BEARING NOTE

BEARINGS ARE UTM GRID, ZONE 17, NAD83 (ORIGINAL), DERIVED FROM SPECIFIED CONTROL POINTS 04219910109 AND 04219920140.

COORDINATES ARE UTM ZONE 17, NAD83 (ORIGINAL), TO URBAN ACCURACY PER SEC. 14 (2) OF O.REG. 216/10, AND CANNOT, IN THEMSELVES, BE USED TO RE-ESTABLISH CORNERS OR BOUNDARIES SHOWN ON THIS PLAN.

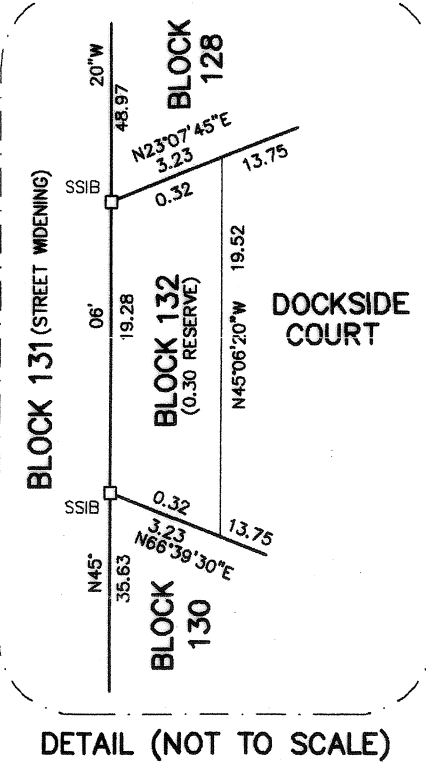
DISTANCE NOTE

DISTANCES ARE GROUND AND CAN BE CONVERTED TO GRID BY MULTIPLYING BY THE COMBINED SCALE FACTOR OF 0.9996768.

MUNICIPAL APPROVAL

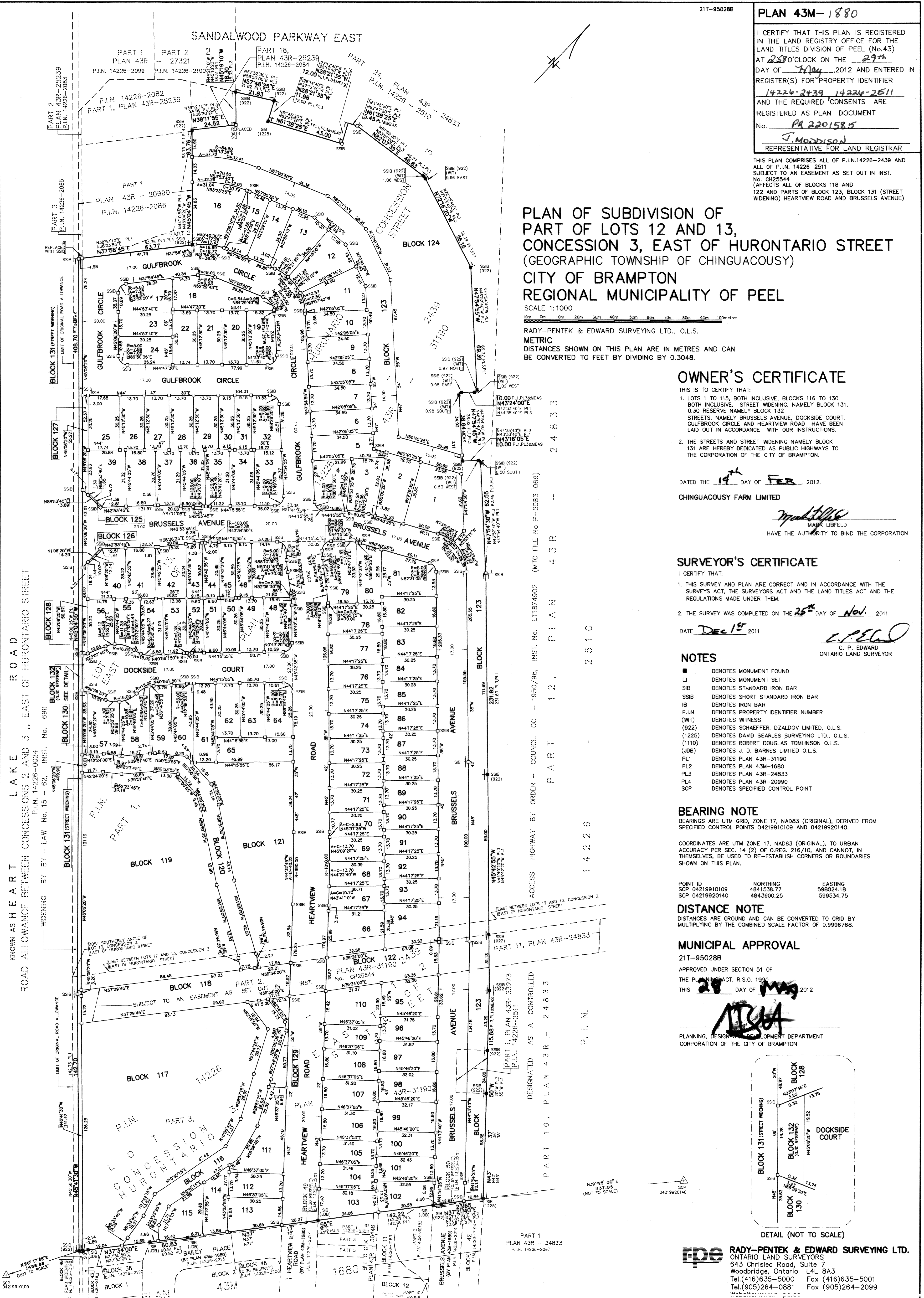
21T-950288
APPROVED UNDER SECTION 51 OF THE PLANNING ACT, R.S.O. 1990
THIS 28 DAY OF May 2012

ALBA
PLANNING, DESIGN AND DEVELOPMENT DEPARTMENT CORPORATION OF THE CITY OF BRAMPTON



rpe RADY-PENK & EDWARD SURVEYING LTD.
ONTARIO LAND SURVEYORS
643 Christie Road, Suite 7
Woodbridge, Ontario L4L 8A3
Tel. (416) 635-5000 Fax (416) 635-5001
Tel. (905) 264-0881 Fax (905) 264-2099
Website: www.rpe.ca
DRAWN: P.M./C.D.S. CHECKED: C.P.E.
JOB No. 08-261 CAD FILE No. 08261S3d

TOTAL AREA OF SUBDIVISION = 13.073 Ha.



KNOWN AS HEART ROAD ALLOWANCE BETWEEN CONCESSIONS 2 AND 3, EAST OF HURONTARIO STREET

BY BY-LAW No. 15 - 52, INST. No. 698
P.I.N. 14226-0024

CONCESSION 3, EAST OF HURONTARIO STREET

HEARTMEW ROAD

BRUSSELS AVENUE

DOCKSIDER COURT

GULFBROOK CIRCLE

HURONTARIO STREET

CONCESSION 2

CONCESSION 1

CONCESSION 0

CONCESSION -1

CONCESSION -2

CONCESSION -3

CONCESSION -4

CONCESSION -5

CONCESSION -6

CONCESSION -7

CONCESSION -8

CONCESSION -9

CONCESSION -10

CONCESSION -11

CONCESSION -12

CONCESSION -13

CONCESSION -14

CONCESSION -15

CONCESSION -16

CONCESSION -17

CONCESSION -18

CONCESSION -19

CONCESSION -20

CONCESSION -21

CONCESSION -22

CONCESSION -23

CONCESSION -24

CONCESSION -25

CONCESSION -26

CONCESSION -27

CONCESSION -28

CONCESSION -29

CONCESSION -30

CONCESSION -31

CONCESSION -32

CONCESSION -33

CONCESSION -34

CONCESSION -35

CONCESSION -36

CONCESSION -37

CONCESSION -38

CONCESSION -39

CONCESSION -40

CONCESSION -41

CONCESSION -42

CONCESSION -43

CONCESSION -44

CONCESSION -45

CONCESSION -46

CONCESSION -47

CONCESSION -48

CONCESSION -49

CONCESSION -50

CONCESSION -51

CONCESSION -52

CONCESSION -53

CONCESSION -54

CONCESSION -55

CONCESSION -56

CONCESSION -57

CONCESSION -58

CONCESSION -59

CONCESSION -60

CONCESSION -61

CONCESSION -62

CONCESSION -63

CONCESSION -64

CONCESSION -65

CONCESSION -66

CONCESSION -67

CONCESSION -68

CONCESSION -69

CONCESSION -70

CONCESSION -71

CONCESSION -72

CONCESSION -73

CONCESSION -74

CONCESSION -75

CONCESSION -76

CONCESSION -77

CONCESSION -78

CONCESSION -79

CONCESSION -80

CONCESSION -81

CONCESSION -82

CONCESSION -83

CONCESSION -84

CONCESSION -85

CONCESSION -86

CONCESSION -87

CONCESSION -88

CONCESSION -89

CONCESSION -90

CONCESSION -91

CONCESSION -92

CONCESSION -93

CONCESSION -94

CONCESSION -95

CONCESSION -96

CONCESSION -97

CONCESSION -98

CONCESSION -99

CONCESSION -100

CONCESSION -101

CONCESSION -102

CONCESSION -103

CONCESSION -104

CONCESSION -105

CONCESSION -106

CONCESSION -107

CONCESSION -108

CONCESSION -109

CONCESSION -110

CONCESSION -111

CONCESSION -112

CONCESSION -113

CONCESSION -114

CONCESSION -115

CONCESSION -116

CONCESSION -117

CONCESSION -118

CONCESSION -119

CONCESSION -120

CONCESSION -121

CONCESSION -122

CONCESSION -123

CONCESSION -124

CONCESSION -125

CONCESSION -126

CONCESSION -127

CONCESSION -128

CONCESSION -129

CONCESSION -130

CONCESSION -131

CONCESSION -132

CONCESSION -133

CONCESSION -134

CONCESSION -135

CONCESSION -136

CONCESSION -137

CONCESSION -138

CONCESSION -139

CONCESSION -140

CONCESSION -141

CONCESSION -142

CONCESSION -143

CONCESSION -144

CONCESSION -145

CONCESSION -146

CONCESSION -147

CONCESSION -148

CONCESSION -149

CONCESSION -150

CONCESSION -151

CONCESSION -152

CONCESSION -153

CONCESSION -154

CONCESSION -155

CONCESSION -156

CONCESSION -157

CONCESSION -158

CONCESSION -159

CONCESSION -160

CONCESSION -161

CONCESSION -162

CONCESSION -163

CONCESSION -164

CONCESSION -165

CONCESSION -166

CONCESSION -167

CONCESSION -168

CONCESSION -169

CONCESSION -170

CONCESSION -171

CONCESSION -172

CONCESSION -173

CONCESSION -174

CONCESSION -175

CONCESSION -176

CONCESSION -177

CONCESSION -178

CONCESSION -179

CONCESSION -180

CONCESSION -181

CONCESSION -182

CONCESSION -183

CONCESSION -184

CONCESSION -185

CONCESSION -186

CONCESSION -187

CONCESSION -188

CONCESSION -189

CONCESSION -190

CONCESSION -191

CONCESSION -192

CONCESSION -193

CONCESSION -194

CONCESSION -195

CONCESSION -196

CONCESSION -197

CONCESSION -198

CONCESSION -199

CONCESSION -200

CONCESSION -201

CONCESSION -202

CONCESSION -203

CONCESSION -204

CONCESSION -205