

# Providing Year-Round Mobility

## Current Winter Maintenance Practices

### Active Transportation Facilities

Brampton Cycling Advisory Committee  
Meeting - Tuesday, February 16, 2021



**BRAMPTON IS A HEALTHY AND SAFE CITY**



## CITY OF BRAMPTON SNOW CLEARING POLICY TO ENCOURAGE WINTER CYCLING

Page 12 of 57

### Introduction

Consistent messaging is essential when trying to reform attitudes of the citizens of Brampton. When we say we want to encourage active transportation, all our policies should be on board with this end. That being said, if we are encouraging people to cycle year round, for transportation, we should make sure there is a welcome spot for their bikes at municipal destinations. This means bike racks should be cleared of snow, in a consistent basis, across the city.

Page 13 of 57

unrelated matter, I asked if 311 would be on centre. She put me on hold while she informed me that her supervisor said

ing for this policy in writing as well as the facilities maintenance.

med me she could arrange to have the bike there I patronize. I explained that I

the snow was being cleared satisfactorily is requesting that all municipal facilities be pay specifically since I had not visited many tion of the person who would be in charge

ed that the bike racks closest to the main ton Cycling Advisory Committee.

Page 14 of 57

### CYC018-2020

1. That the delegation from Stephen Laidlaw, Co-chair, to the Cycling Advisory Committee Meeting of December 15, 2020, re: City of Brampton Snow Clearing Policy To Encourage Winter Cycling, be received; and,
2. That staff be requested to report back to a future Cycling Advisory Committee meeting with information regarding current winter maintenance practices for municipal bike parking facilities.



# Scope

## Infrastructure/Facility Types

- Bike Racks
- Bike Lanes (on-road)
- Multi-use Paths (road allowance)
- Rec. Trail (valleyland/utility corridor)

## Maintenance

- Responsibility (Operating Group)
- Response Times
- Level of Service





# Bike Racks

## **Responsibility (Operating Group):**

Facility Staff (recently revised to align with City organization changes)

**Response Times:** as needed/required (regular maintenance task)

**Level of Service:** snow fully removed from rack, with operations at a lower capacity due to facility closures there may be some delays in overall removal timing.

\* A reminder to clear snow around bike racks was recently send out by District Managers to all recreation facilities.







# Bike Lanes (On-road)

## Responsibility (Operating Group):

Roads Maintenance, Operations & Fleet

## Response Times:

Same as roads, “safe and passable” within 24 hours following the end of a snow event.

## Level of Service:

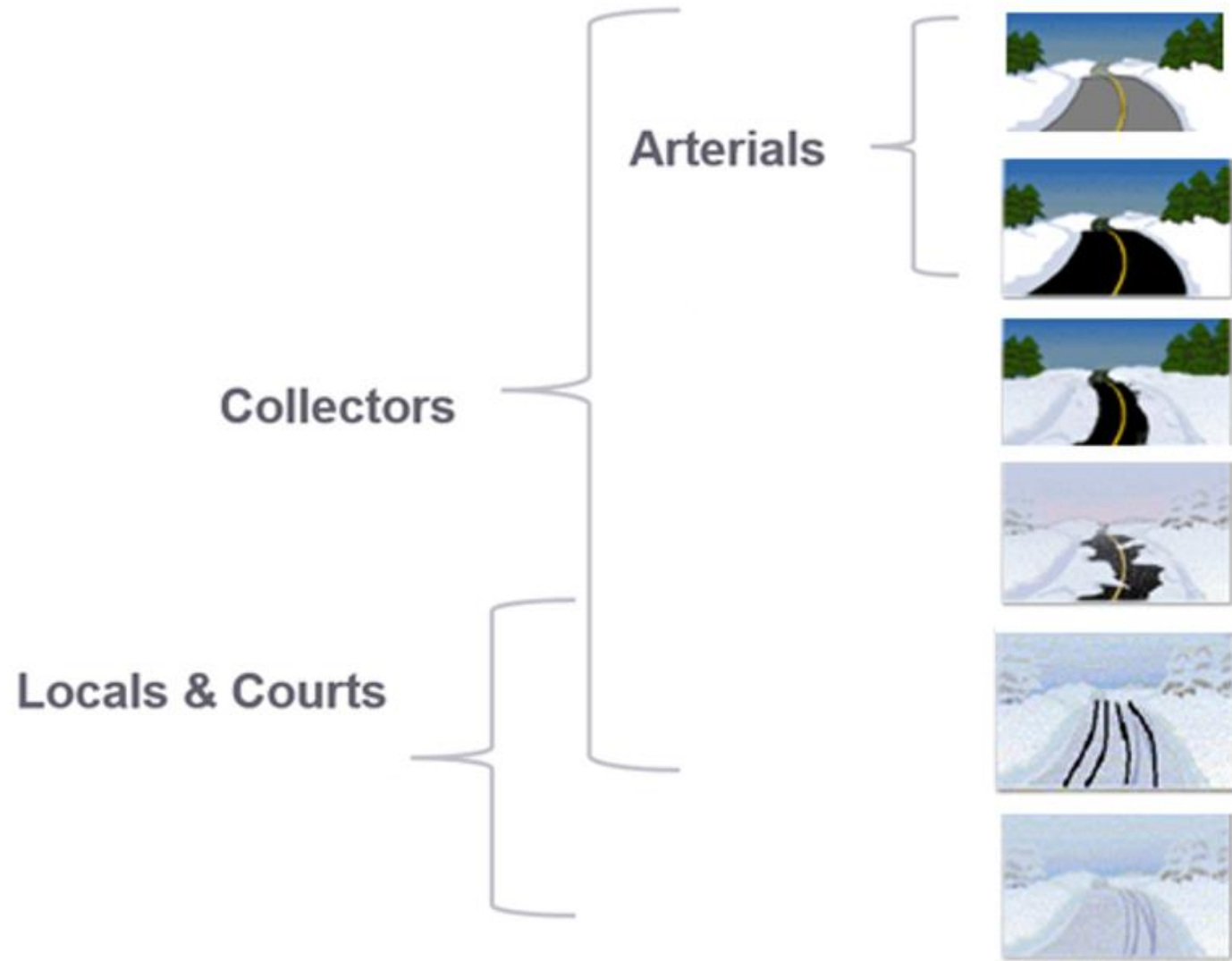
Safe and passage means:

- Arterials – bare pavement, completely clear of ice and snow, may be wet or dry, pre-treated and plowed continuously during any snowfall
- Collectors – conditions range from bare to track bare pavement (snow covered except for wheel tracks), receive second priority during snow clearing operations
- Locals – roads can be track bare or snow-covered, plowed when at least 5 cm of snow falls in a single storm

<https://brampton.focus511.com/> - snow plow tracker map











# Multi-use Paths (In-Boulevard)

## Responsibility (Operating Group):

Roads Maintenance, Operations & Fleet

## Response Times:

- within 24 hours after snow fall or if a major event within 48 hours
- once snow exceeds 5.0 cm depth, plow is deployed

## Level of Service:

- maintained as if sidewalk, with equipment design to clear 1.5m wide sidewalk and only one facility type/side of road (boulevard paths next to s/w not maintained)
- maintains Region MUPs/sidewalks

[www.brampton.ca/snow](http://www.brampton.ca/snow)









# Recreational Trails (Valleyland/Utility Corridor)

**Responsibility (Operating Group):**  
Parks Maintenance

**Response Times:**

- within 24 hours after snow fall or if a major event within 48 hours
- once snow exceeds 7.5 cm depth, plow is deployed

**Level of Service:**

- plow a 3.0 m width
- snow removal and apply material (salt/sand/mixture)
- paved paths only
- “hand” locations: hard to get at locations, bridges that can’t accommodate vehicle load
- as a part of Winter Wonderland named trails (Etobicoke, Fletchers, Ching. Esker and Doan Doan) are inspected daily at 6:00 am for ice/snow, etc.

[www.brampton.ca/snow](http://www.brampton.ca/snow)







## Winter Maintenance Recreational Trails

NOV 2020



**STREETS  
FOR  
PEOPLE**

## Bike Lane



**BRAMPTON IS A HEALTHY AND SAFE CITY**





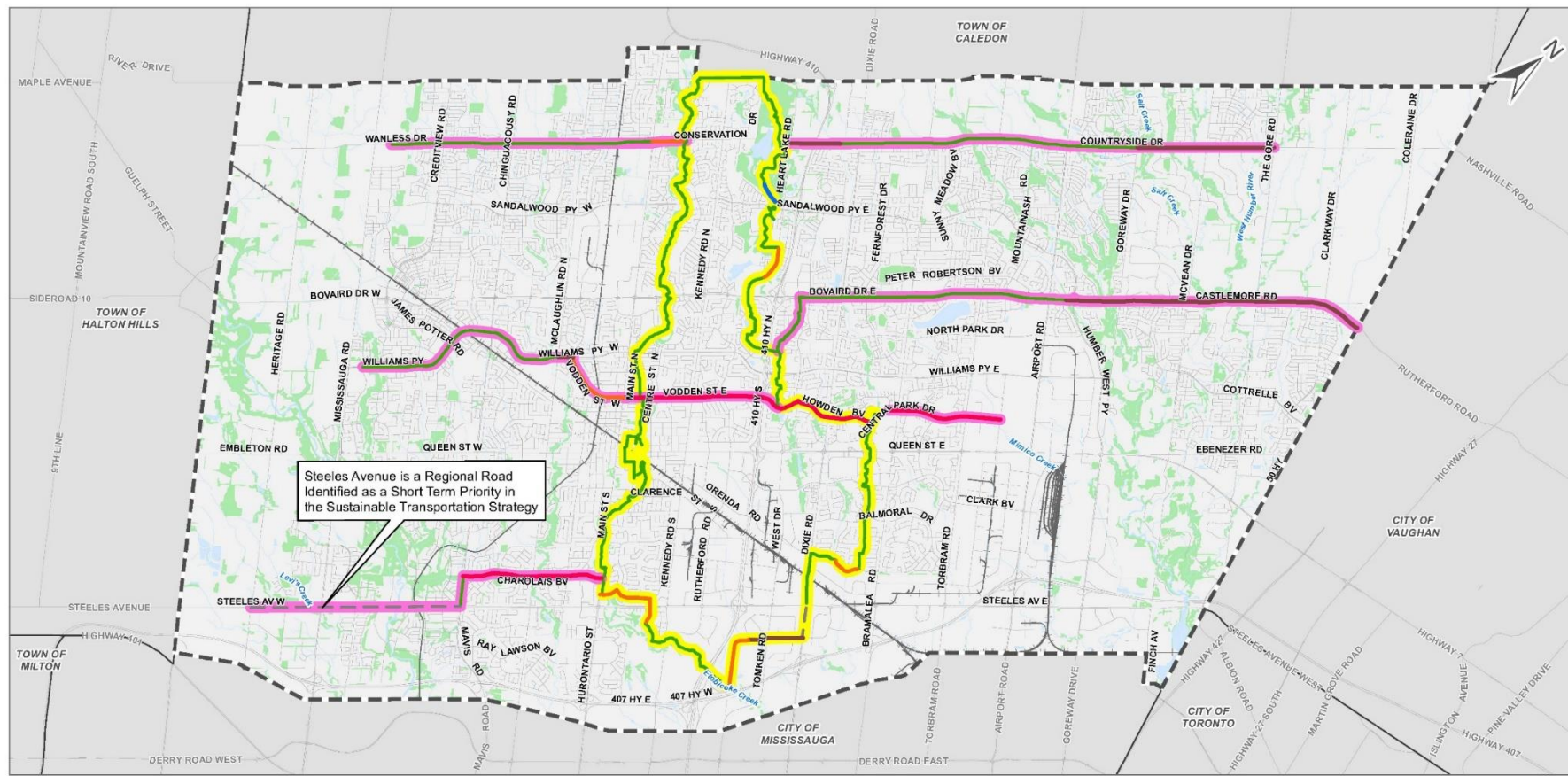
# ATMP

## Recommendations – Winter Maintenance

1. Develop priority network
2. Assess best practices and service level thresholds to determine impact to operating budgets, equipment needs and resources.

### Operating Thresholds/Best Practices:

- bare pavement condition
- 1 m min. width for uni-directional
- 2.4 m min. width for bi-directional



Priority Cycling Network:  
Loop Route and East-West Connections

Brampton ATMP  
City of Brampton



Notes  
1. Coordinate System: NAD 1983 UTM Zone 17N

Path: \\c:\east\bigroup.com\U\H\102159\_BramptonATMP\6.0 Design (Work) Phase\2-GIS\X\ATMP\Analysis\_Mapping\REV\102159-Fig-09-loop-and-ew-connections\_2019-04-29.mxd

Date: April 2019



# BRAMPTON IS A HEALTHY AND SAFE CITY







Ride your bike. Discover your city.

Brampton Cycling Advisory Committee



**BRAMPTON**  
Flower City