



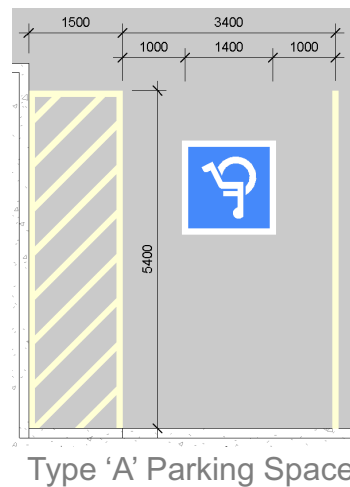
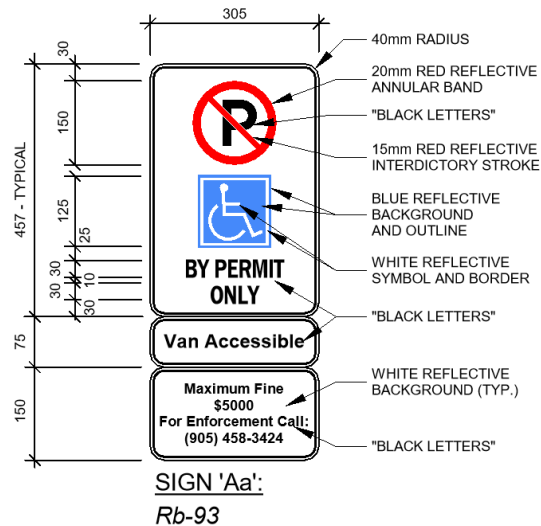
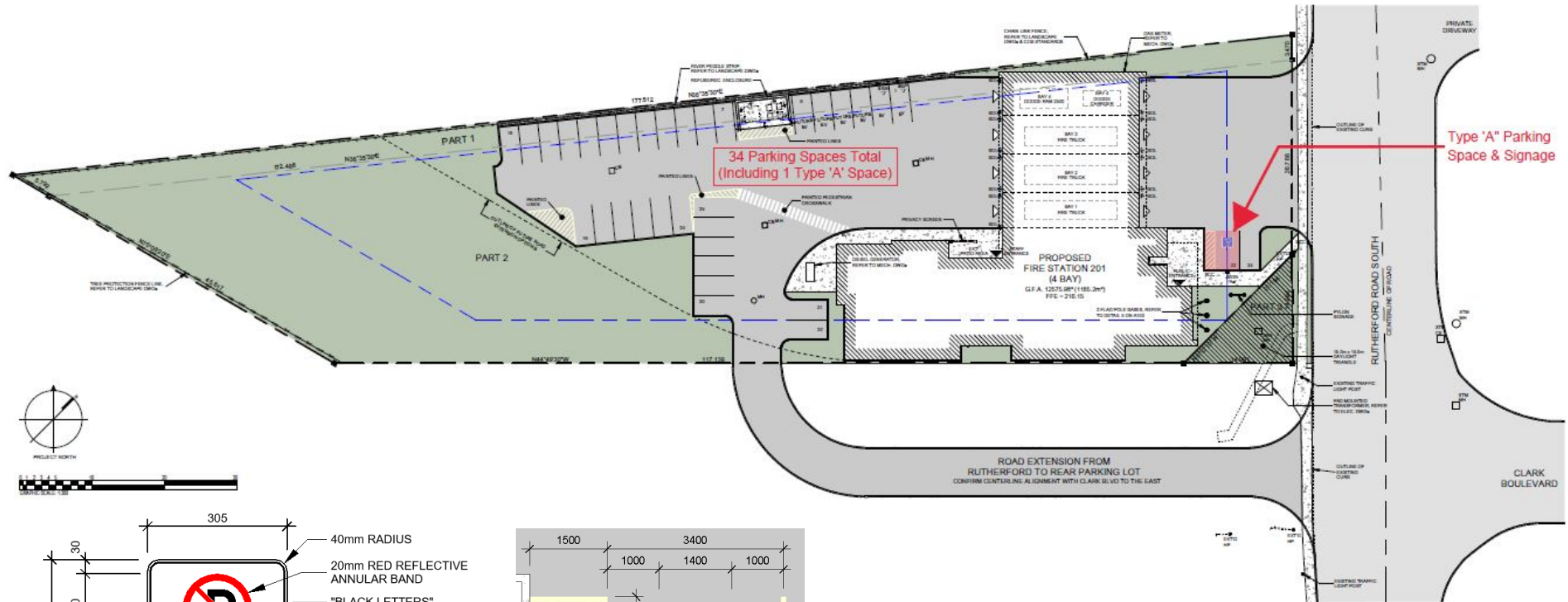
BFES Station 201 – Accessibility Advisory Committee Presentation

Address : 25 Rutherford Road South, Brampton

March 9<sup>th</sup>, 2021

salterpilonarchitecture

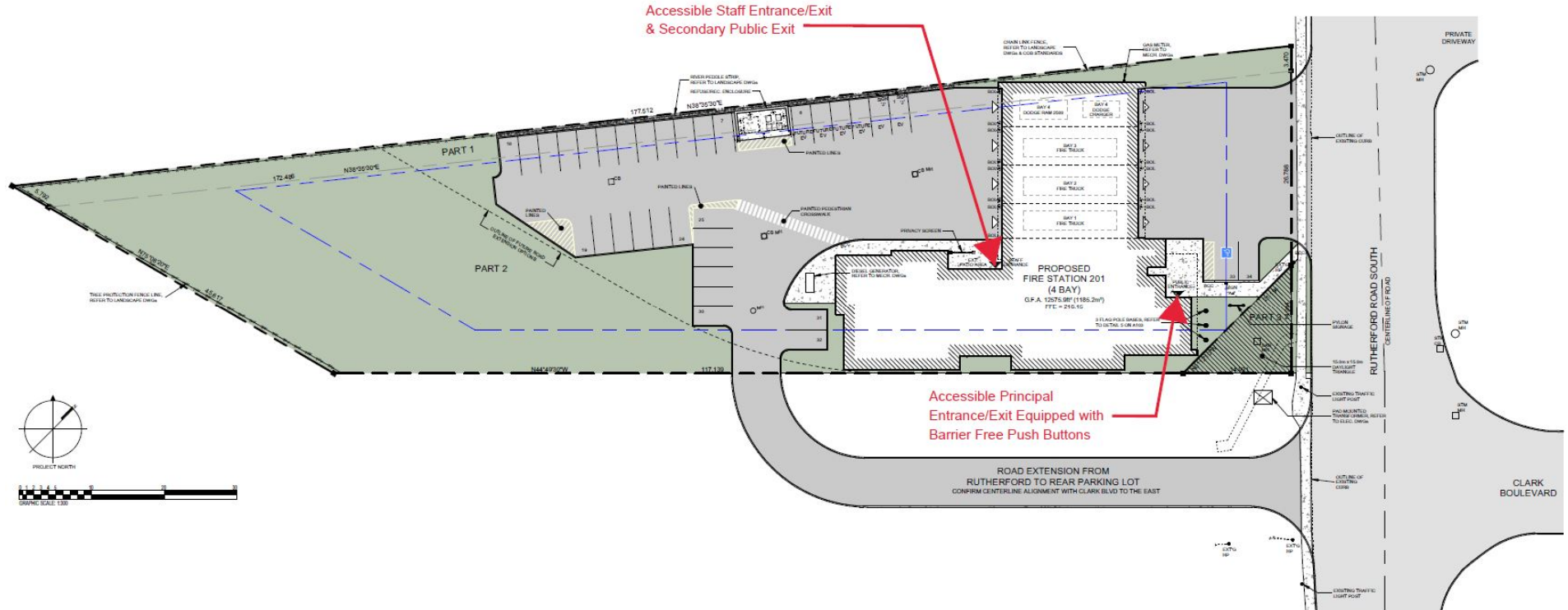
# Station #201 | Site Plan – Accessible Parking



**Brampton Fire Station #201**  
Accessibility Advisory Committee Presentation  
March 9<sup>th</sup>, 2021

**salterpilon**architecture

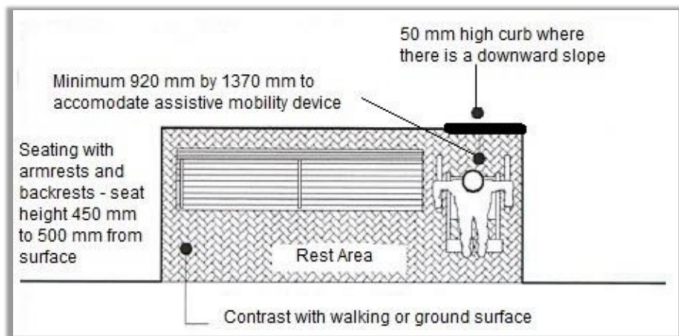
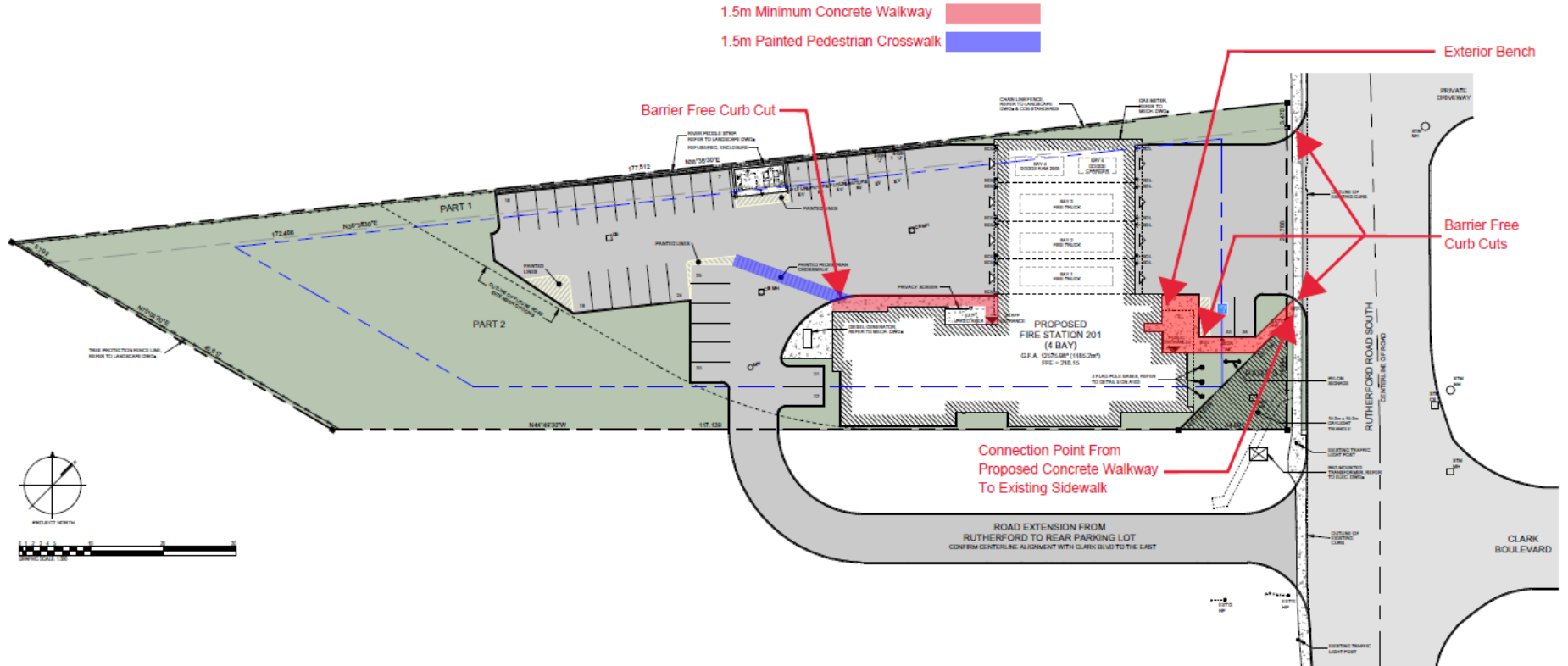
# Station #201 | Site Plan – Accessible Entrances/Exits



Brampton Fire Station #201  
Accessibility Advisory Committee Presentation  
March 9<sup>th</sup>, 2021

salterpilonarchitecture

## Station #201 | Site Plan – Exterior Path Of Travel

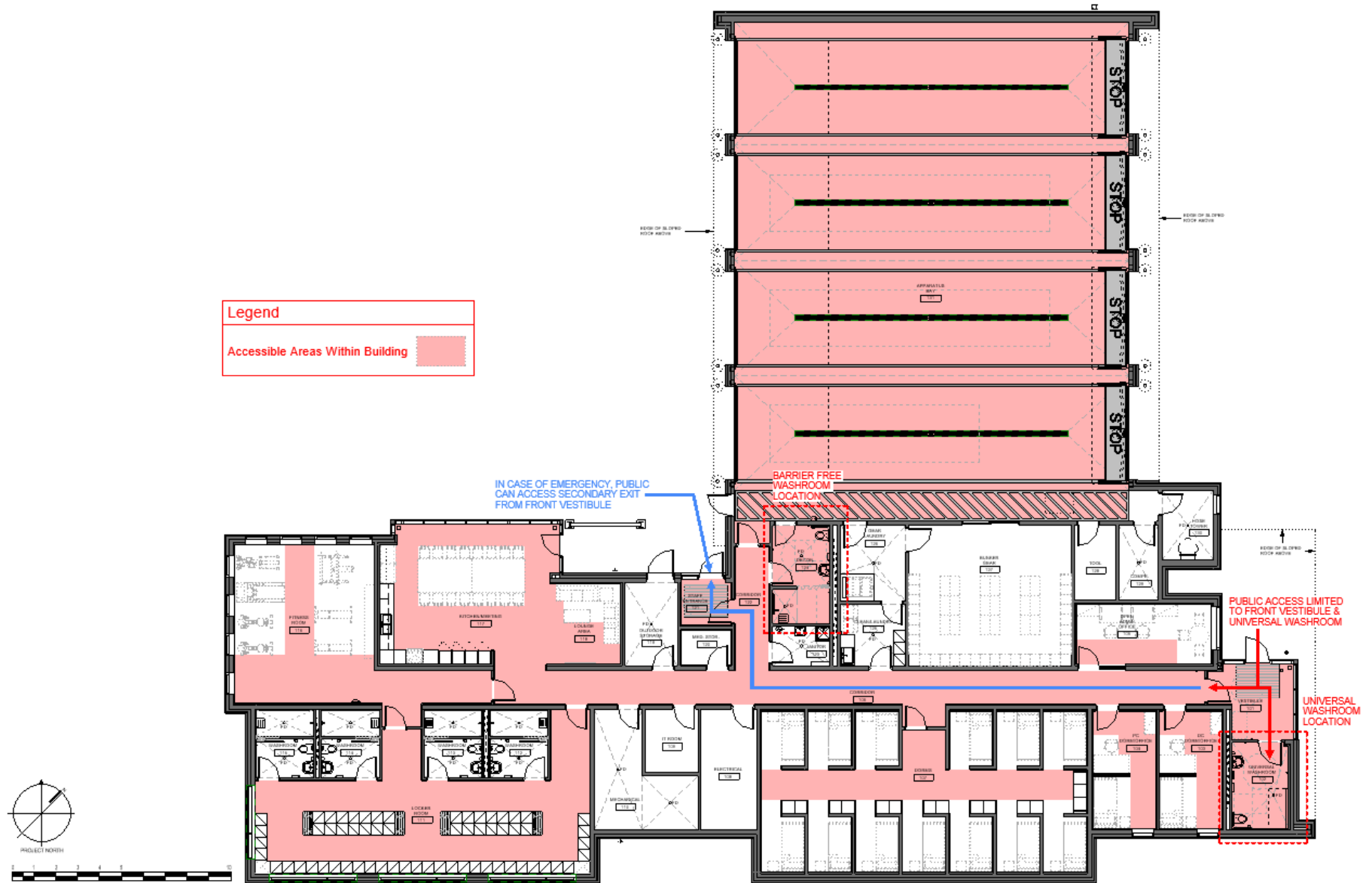


**Brampton Fire Station #201**  
**Accessibility Advisory Committee Presentation**  
**March 9<sup>th</sup>, 2021**

salterpilonarchitecture

# Station #201 | Floor Plan – Accessible Areas

Legend	
Accessible Areas Within Building	



Brampton Fire Station #201  
Accessibility Advisory Committee Presentation  
March 9<sup>th</sup>, 2021

salterpilonarchitecture

# Station #201 | Floor Plan – Turning Circle & Maneuvering Areas

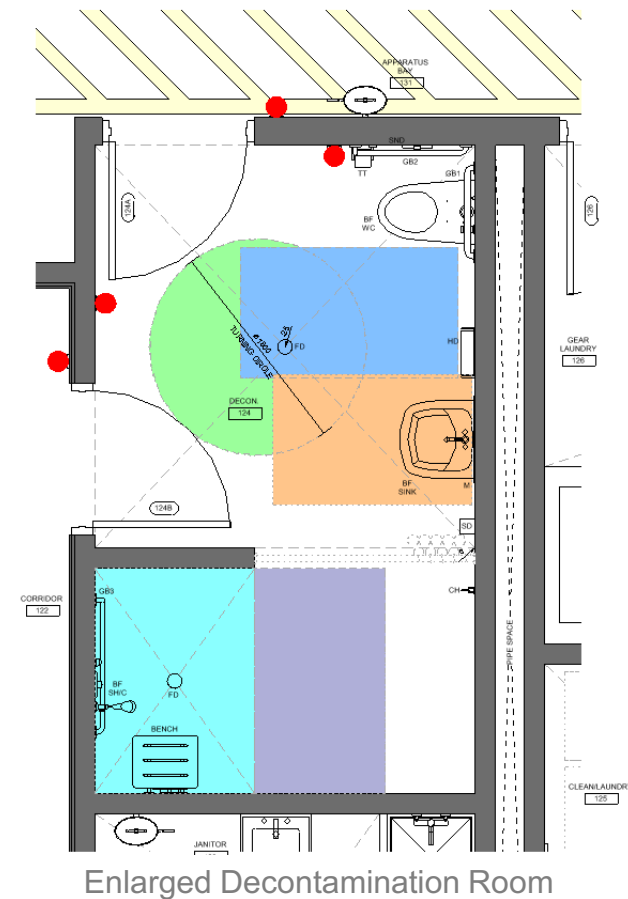
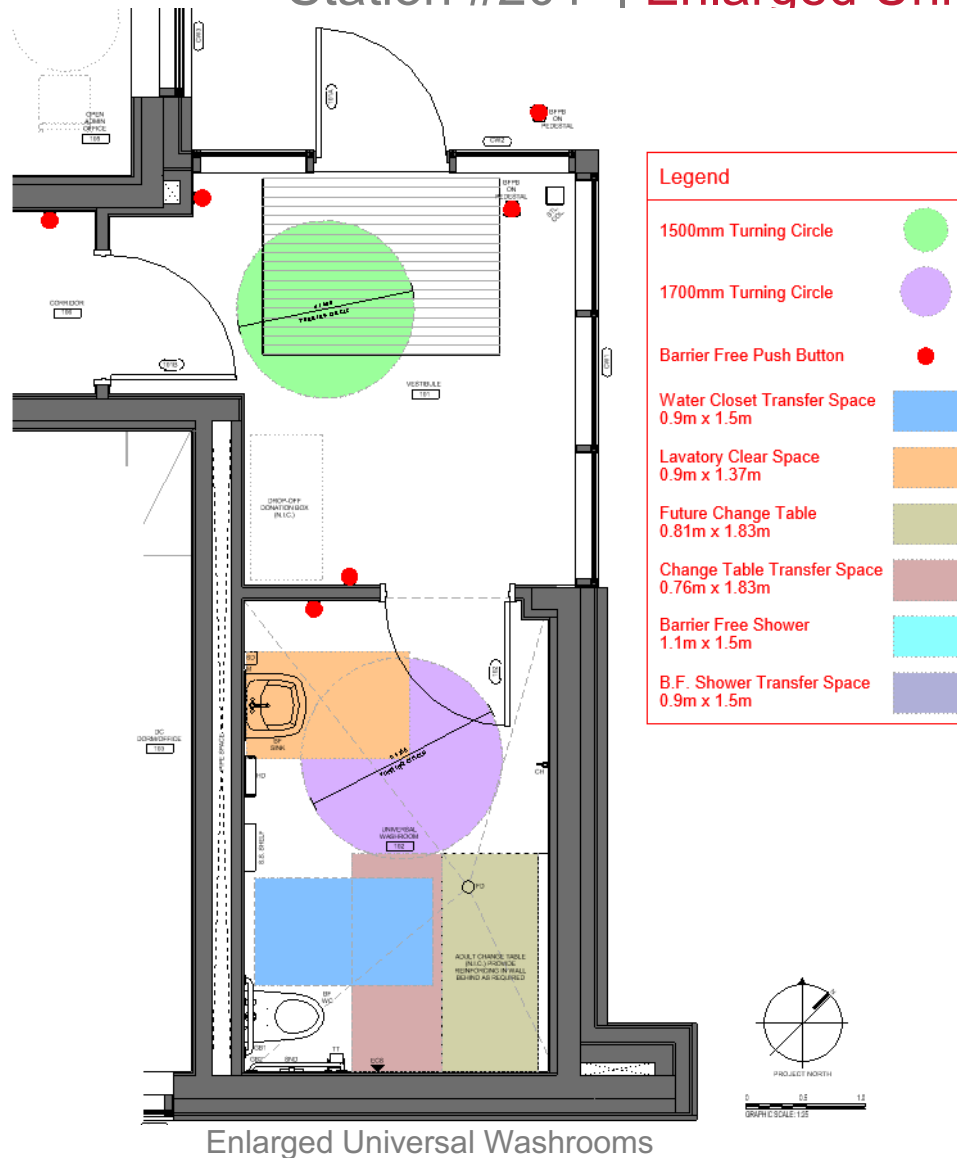


Brampton Fire Station #201  
Accessibility Advisory Committee Presentation  
March 9<sup>th</sup>, 2021

salterpilonarchitecture



# Station #201 | Enlarged Universal & Barrier Free Washrooms



**Brampton Fire Station #201**  
**Accessibility Advisory Committee Presentation**  
 March 9<sup>th</sup>, 2021

**salterpilon**architecture

## Station #201 | Rendering



## Fire Station 201 Entrance | East Façade @ Rutherford Road



Brampton Fire Station #201  
Accessibility Advisory Committee Presentation  
March 9<sup>th</sup>, 2021

salterpilon<sub>architecture</sub>