

# BRAMPTON'S RIVERWALK

## The Riverwalk Area Urban Design Master Plan (UDMP)

**Presentation for Brampton's Environmental Advisory Committee (BEAC)**

April 13, 2021

*Alex Taranu, Sr. Advisor, Design  
Environment & Dev. Engineering*

*Stav Kassaris, Environmental Planner,  
Environment & Dev. Engineering*

*Public Works & Engineering Department, City of Brampton*





# The Riverwalk Program: Overview

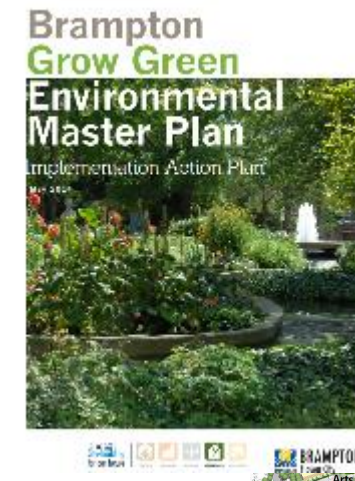
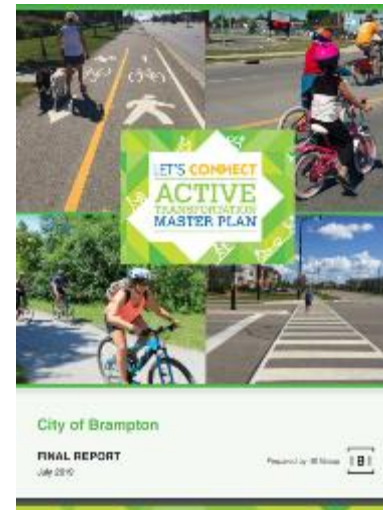
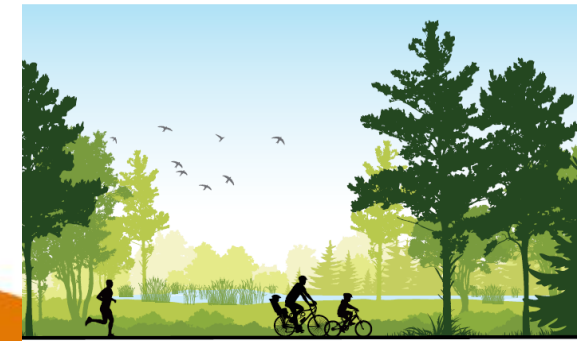
- Key infrastructure and transformative initiative for Downtown Brampton
- Integrates flood protection, revitalization, nature and open space, place making, public amenities
- Transforms a liability into a sustainable asset and attraction for economic growth and people
- Integrates with other strategic initiatives
- Catalyst for Downtown revitalization, development





# The Riverwalk Program: Policy Context and Support

- Provincial Urban Growth Centre, Special Policy Area update (2014)
- **TRCA Living City Strategy**
- **Brampton Grow Green Environmental Master Plan**
- **Parks and Recreation Master Plan**
- **Active Transportation Master Plan**
- Council approval of the Vision, Feasibility Studies; continuous Council support
- Current Term of Council priority
- Brampton 2040 Vision
- **Brampton Eco Park Strategy**
- Economic Development Master Plan, Tourism Strategies
- Arts & Culture Master Plan update, upcoming Cultural Heritage Strategy
- ROP Active Parks Design Guide, COB Sustainability Guidelines and Indicators



FIVE-YEAR UPDATE TO  
**BUILDING**  
The Living City  
2013-2022 STRATEGIC PLAN



# Riverwalk Program Work Components: Overview



## Downtown Brampton Flood Protection Env. Assessment (DBFP EA)

- Commenced in 2018 to seek solutions for Downtown Brampton flood protection
- Led by Toronto & Region Conservation Authority (TRCA) in partnership with the City of Brampton
- **Completed Summer 2020; approved in Sep 2020**



## Urban Design/Open Space Master Plan (UDMP)

- Commenced in 2019 to complement the EA
- Led by City of Brampton
- Producing an overall master plan for open space; design concepts for the main parks; preliminary programming; integrating sustainability and resilience
- **Public engagement and consultation: 2020, Mar 2021**

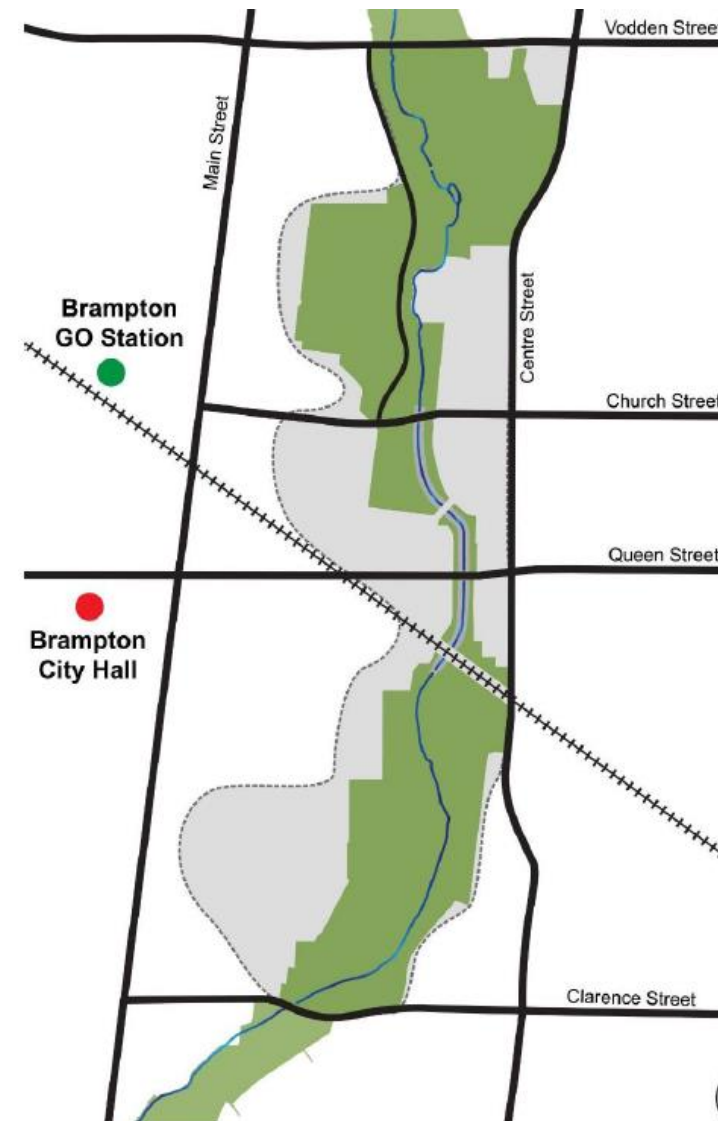


## Economic Development, Real Estate

- Return on Investment (ROI) Study (2019)
- Identified significant economic benefits of unlocking development in Downtown Brampton

## Advocacy and Funding

- \$38.8 M from federal Disaster Mitigation Fund
- \$5.9 M approved by Council for Detailed Design





# Riverwalk Program: Advocacy, Communication, Engagement

- Presentations, walks, social media posts
- **Website** is key information and communication platform
  - ✓ Overview of program
  - ✓ Key documents
  - ✓ FAQs
  - ✓ Image gallery (past, present, future)
  - ✓ Visualizations and videos
- Stakeholder engagement
- Outreach to community
- Community Liaison Team
- Public Info Session Oct 1, 2020
- **Public Info Session Mar 17, survey**

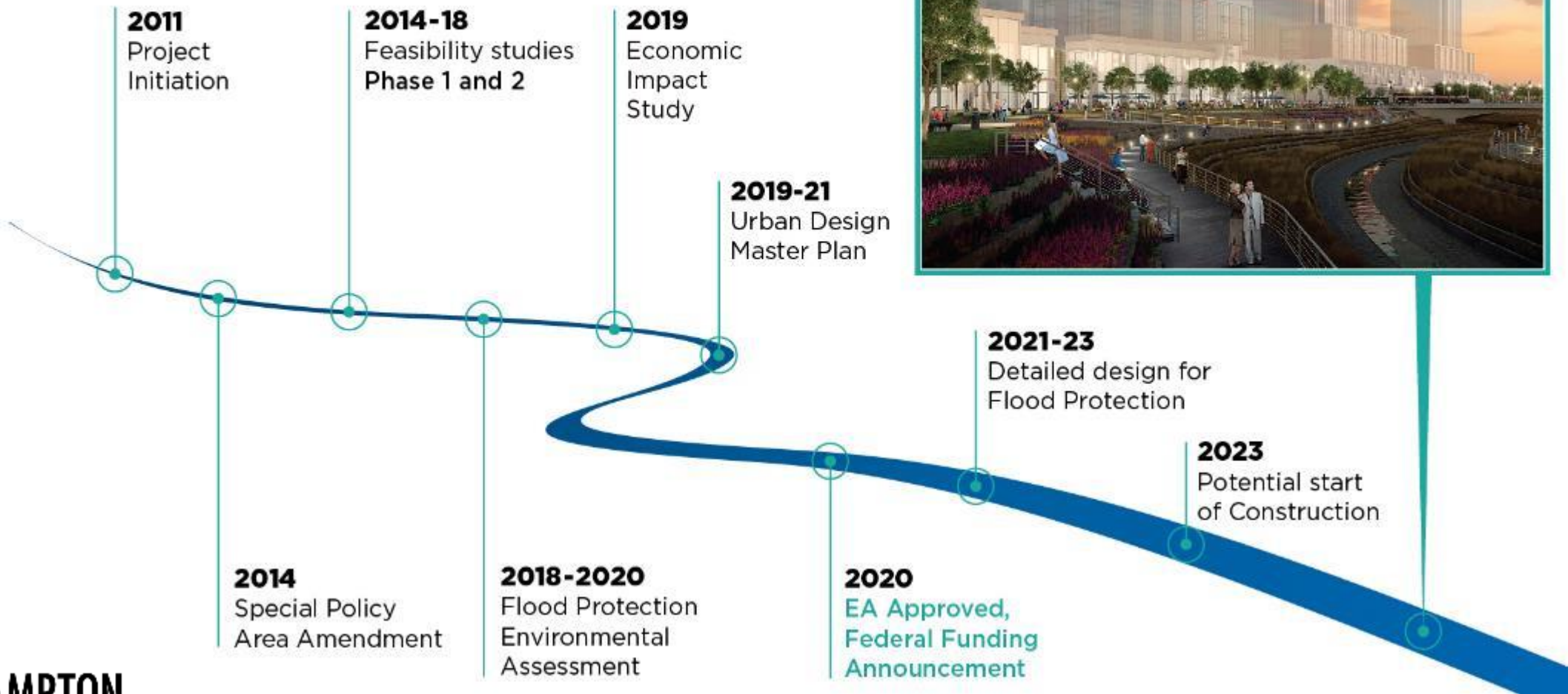


See <https://www.brampton.ca/EN/Business/planning-development/projects-studies/riverwalk/Pages/Have-Your-Say.aspx> for more information and updates

[www.brampton.ca/riverwalk](https://www.brampton.ca/riverwalk)

# Riverwalk Program: Timelines

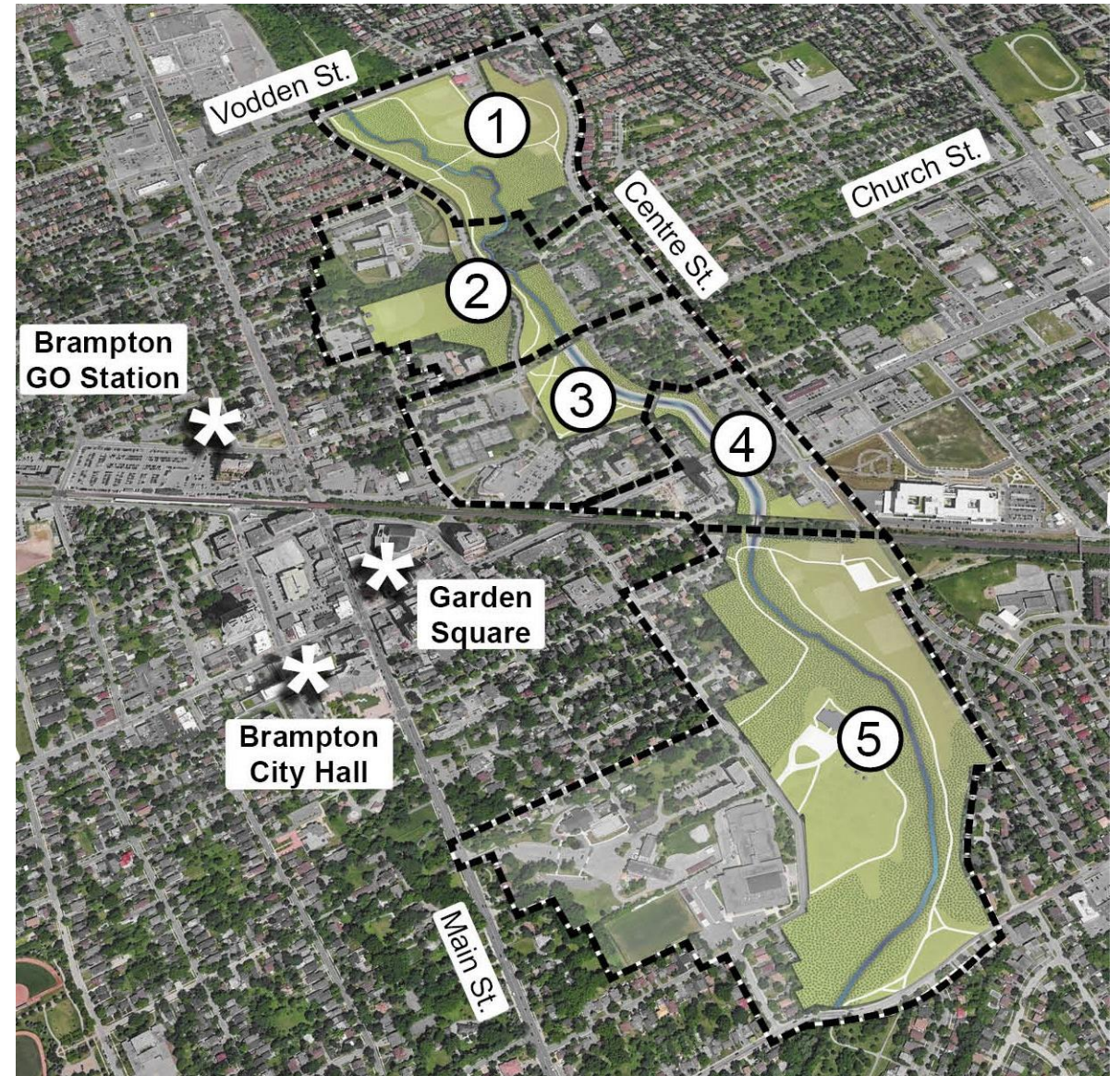
## ETOBICOKE CREEK





# Urban Design Master Plan: Overview

- Complements Environmental Assessment (EA) engineering solutions and **proposes landscape treatments** for flood mitigation elements
- Produces **open space and public realm master plan** for entire valley
- Integrates **active transportation** and transit
- Provides **preliminary programming** elements for parks
- Focuses on **making attractive places for all**, character and identity improvements
- Provides a **framework for resilience, sustainability and healthy living** for the area
- Targeting **completion** by Q2 2021





# Riverwalk UDMP: Work to Date Summary



Natural Creek Bed in Centennial Park



Naturalized Planting in Centennial Park



Meadow in Duggan Park

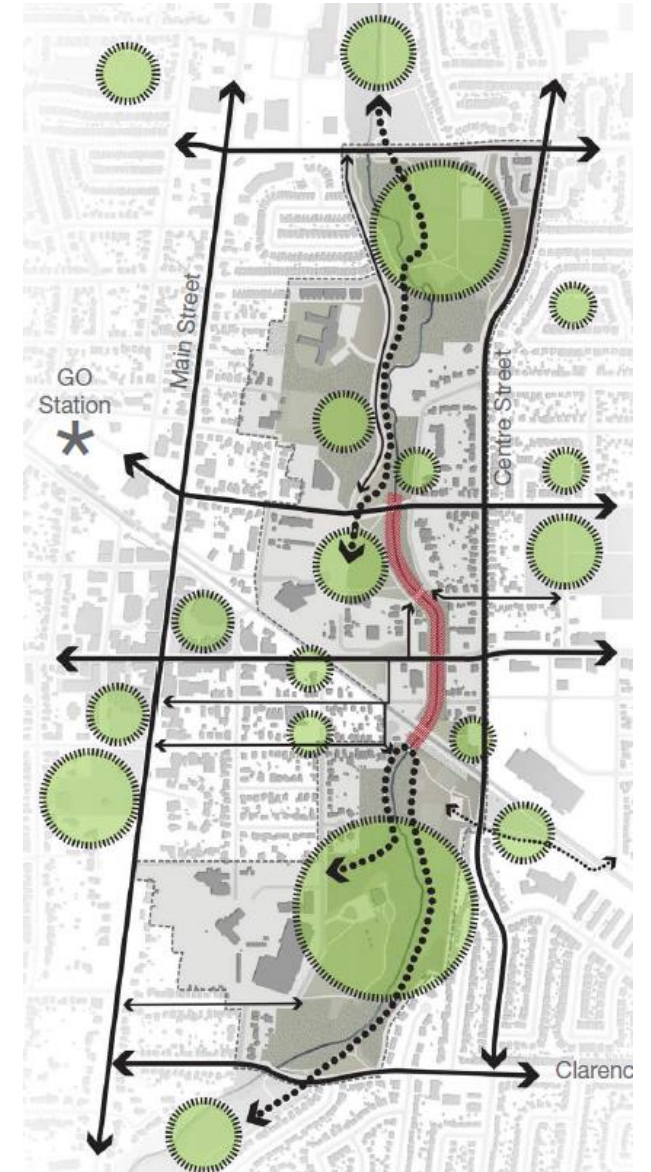


## Existing Condition Analysis

Review context, current state; open space system/parks, environment, transportation and access, environment, cultural heritage, accessibility

## Constraints & Opportunities Analysis

Valley and 5 component areas (Duggan Park, Central Public School Park, Rosalea Park, revamped channel, Centennial Park)





# Design Vision Update

## The City Faces the River, The City Rediscovered the River

*Riverwalk is Brampton's new riverfront, a continuous ribbon of open space that weaves through and intersects with the city's urban fabric.*

*Riverwalk will be a catalyst for city building, community building, ecology, resilience and sustainability.*

For a Summary of Public Information Session #1,  
see: [www.brampton.ca/riverwalk](http://www.brampton.ca/riverwalk)





# Riverwalk UDMF: Work to Date

Environment, Resilience, Sustainability, Public Health focus

## Riverwalk Vision

The City Faces the River  
The City Rediscovered the River

The original vision for Riverwalk presented opportunities for downtown revitalization. The Downtown Etobicoke Creek Revitalization Study was approved by Brampton City Council in June 2014.



*“The Riverwalk...  
...provides a focal point for city  
building, community, ecology,  
resilience and sustainability”*

## Design Principles and objectives

Riverwalk is Brampton's new riverfront, a continuous ribbon of open space that weaves through and intersects the City's urban fabric and provides a focal point for city building, community, ecology, resilience and sustainability.

### Links & Connections

- Connect major destinations along and adjacent to Riverwalk.
- Link Riverwalk bike lanes, streets and transit.
- Integrate Riverwalk into surrounding neighbourhoods, public realm improvements.
- Establish a hierarchy of pathways and trails that are accessible, safe and understandable.
- Establish loops and links to for a flexible and varied experience.
- Create bridges and boardwalks that are accessible and safe.



### Integration & Intensification

- Redefine and urbanize Riverwalk edges.
- Create a vibrant riverfront amenity by building upon the Flood Protection measures.
- Establish a new destination identity for the Riverwalk & Downtown.
- Create strong urban connections between the Riverwalk and Downtown Brampton.



### Programming & Recreation

- Enhance programs and features to increase recreational opportunities while protecting sensitive habitats.
- Provide new pedestrian experiences of open spaces and water's edge.
- Improve and enhance the overall public realm and functionality.
- Develop varied movement and recreation routes.
- Encourage nature-based play and exploration.
- Encourage physical activity and wellness.



### Discovery, Education & Interpretation

- Showcase the rich cultural heritage associated with Downtown Brampton, the Etobicoke Creek and within the Riverwalk study area.
- Develop clear and consistent wayfinding and interpretive signage around major trail entry points and nodes.
- Share the story of the Etobicoke Creek's natural and human history through public art and other installations.



### Protect, Preserve & Enhance

- Expand and enhance terrestrial and aquatic habitat for native flora and fauna.
- Enhance responsible interaction with the natural environment.
- Protect and preserve the most sensitive natural areas.
- Protect, enhance and establish new view corridors, vistas and visual connections from surrounding streets, bridges and neighbourhoods, and within the Riverwalk Precinct.



### Sustainability & Resilience

- Exhibit sustainable best practices and climate change leadership through innovative design, robust materials and low maintenance and cohesive management frameworks.
- Celebrate, enhance, create and integrate ecological spaces and habitat, improving resiliency to climate change, increasing our natural capital and protecting valuable natural resources and ecosystems for the future.



### Safety & Accessibility

- Create a continuous trail that provides a clear, safe and intuitive route through Riverwalk.
- Provide clear and safe access all levels of mobility and ability.
- Implement a unified wayfinding and signage strategy.
- Create a lighting strategy addresses public safety objectives while achieving the highest standards of habitat protection, reduction of light pollution and energy efficiency.





# The Riverwalk: Lessons from the Pandemic



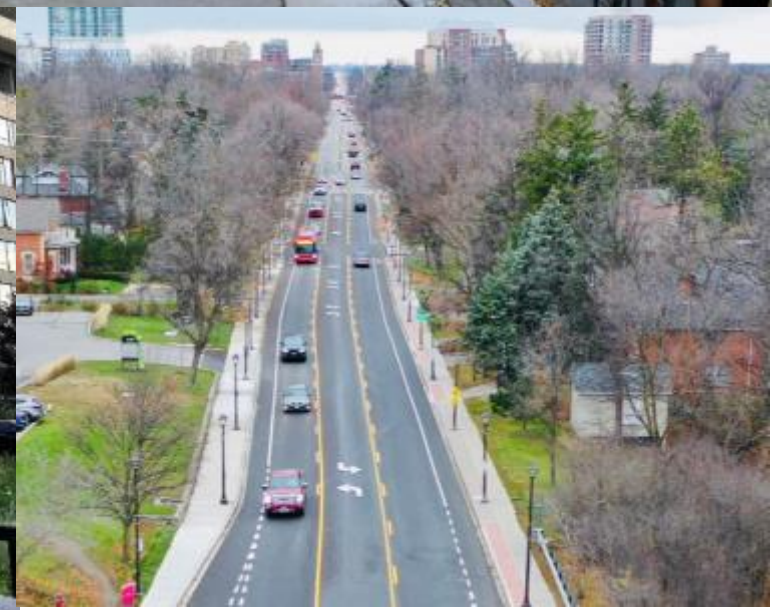
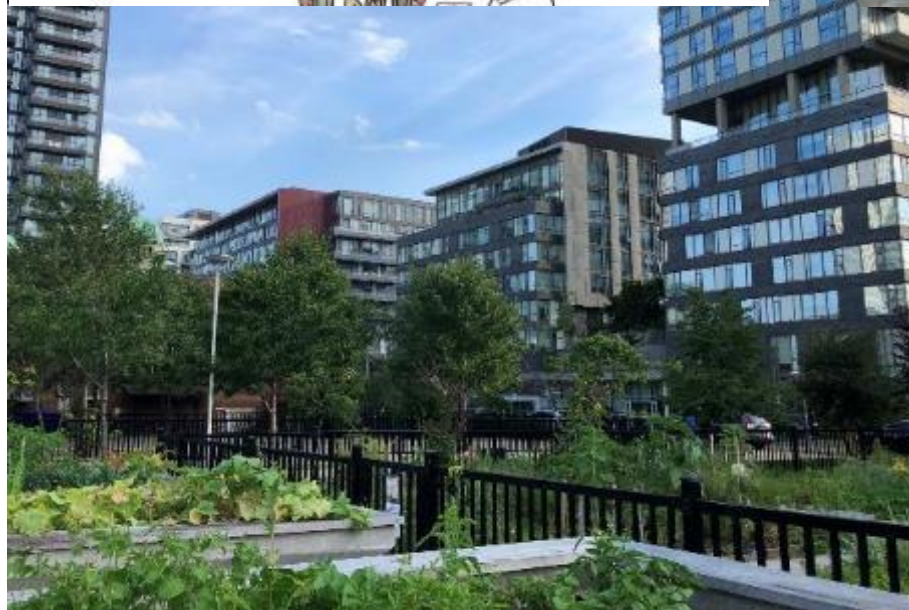
Key current issues arising from pandemic lessons:

- Access to nature and open space
- Access to sustainable mobility
- Access to affordable housing
- Access to amenities

+

The “new” economy

Post-pandemic City opportunities





# Riverwalk UDMP: Environment, Resilience, Sustainability, Public Health

- Framework stage - planning and design directions, integration:
  - ✓ natural heritage enhancement
  - ✓ climate change mitigation and adaptation
  - ✓ sustainable mobility
  - ✓ sustainability, green energy and infrastructure
  - ✓ low impact development, storm water management
  - ✓ urban agriculture
  - ✓ active living, public health and wellbeing
  - ✓ access to nature
  - ✓ economic sustainability, social equity
  - ✓ environmental education
- Collaboration, partnerships: TRCA, Region of Peel, community
- Potential pilot/demonstration projects including in the interim
- Resilience, Sustainability and Healthy Development Framework to become complete Plan including performance indicators





# The Riverwalk Program: **Brampton Eco Park**

**Brampton Eco Park** = a *network* of sustainable urban/green spaces (*at the city scale*), referred to as Eco Spaces, that better integrate residents with the natural environment

Guided by 7 principles:

- |  |   |
|--|---|
| 1) Maximize ecological value                 | 5) Integrate with surrounding community |
| 2) Provide opportunities for social services | 6) Support innovation                   |
| 3) Make nature visible                       | 7) Reflect local identity               |
| 4) Design with nature                        |   |

## **Eco Spaces**

- enhance and maintain healthy natural systems and processes
- integrate opportunities for meaningful social and environmental interactions and experiences
- strive to incorporate the seven guiding Eco Park principles

[www.brampton.ca/ecopark](http://www.brampton.ca/ecopark)

***Eco Park as design driver:  
“to plan, design and improve  
the Riverwalk area as  
a premier Eco Space”***





# Riverwalk UDMP: Design Drivers, Directions

- **Eco Park Space concept**
  - ✓ Environmental and ecological enhancement
  - ✓ Green infrastructure
  - ✓ Access to nature
- **Programming for a variety of uses, for inclusivity**
  - ✓ Passive and active recreation options
  - ✓ Events, entertainment, public art
  - ✓ Natural and cultural heritage education
- **Focus on sustainable mobility**
  - ✓ Enhancing the active transportation network
  - ✓ Proximity of the Downtown mobility hub, regional transit/GO service, future LRT, Zum
  - ✓ High order transit network (upcoming Queen street BRT)
- **Strengthening Downtown character and identity**
  - ✓ Place-making and attractions based on the area's history/heritage, interpretative program
  - ✓ Cultural events, public art, wayfinding





# Riverwalk UDMP: Design Directions, Approaches, Intent

## Programming:

- Multiuse, flexible spaces for variety of uses
- Programming and design for all ages and abilities (8-80)
- Inviting and inclusive public spaces, public amenities for all
- Comfort and safety, accessibility
- Variety of spaces, places, and amenities from urban to natural
- Integrated/eco-design, “design with nature”
- Support for equity, social balance, education
- Attraction for downtown, events

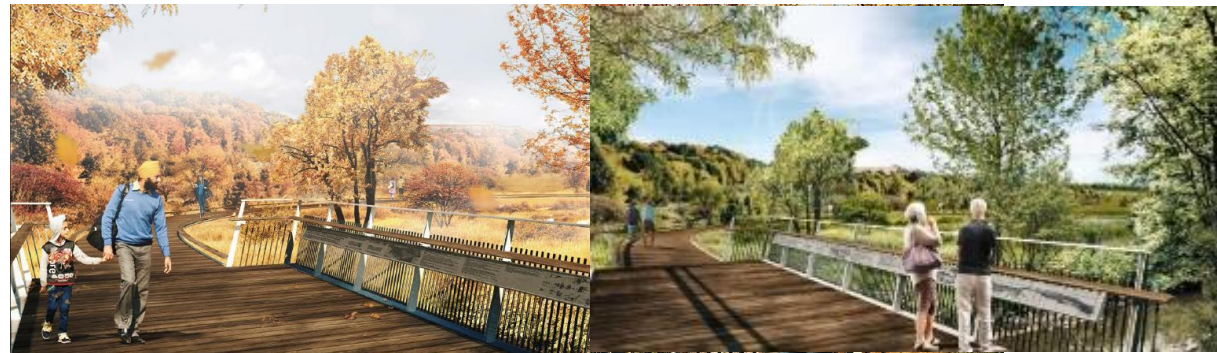
*Design for people, with people -  
design with heart.*





# Riverwalk UDMP: Focus on Five Areas and Parks

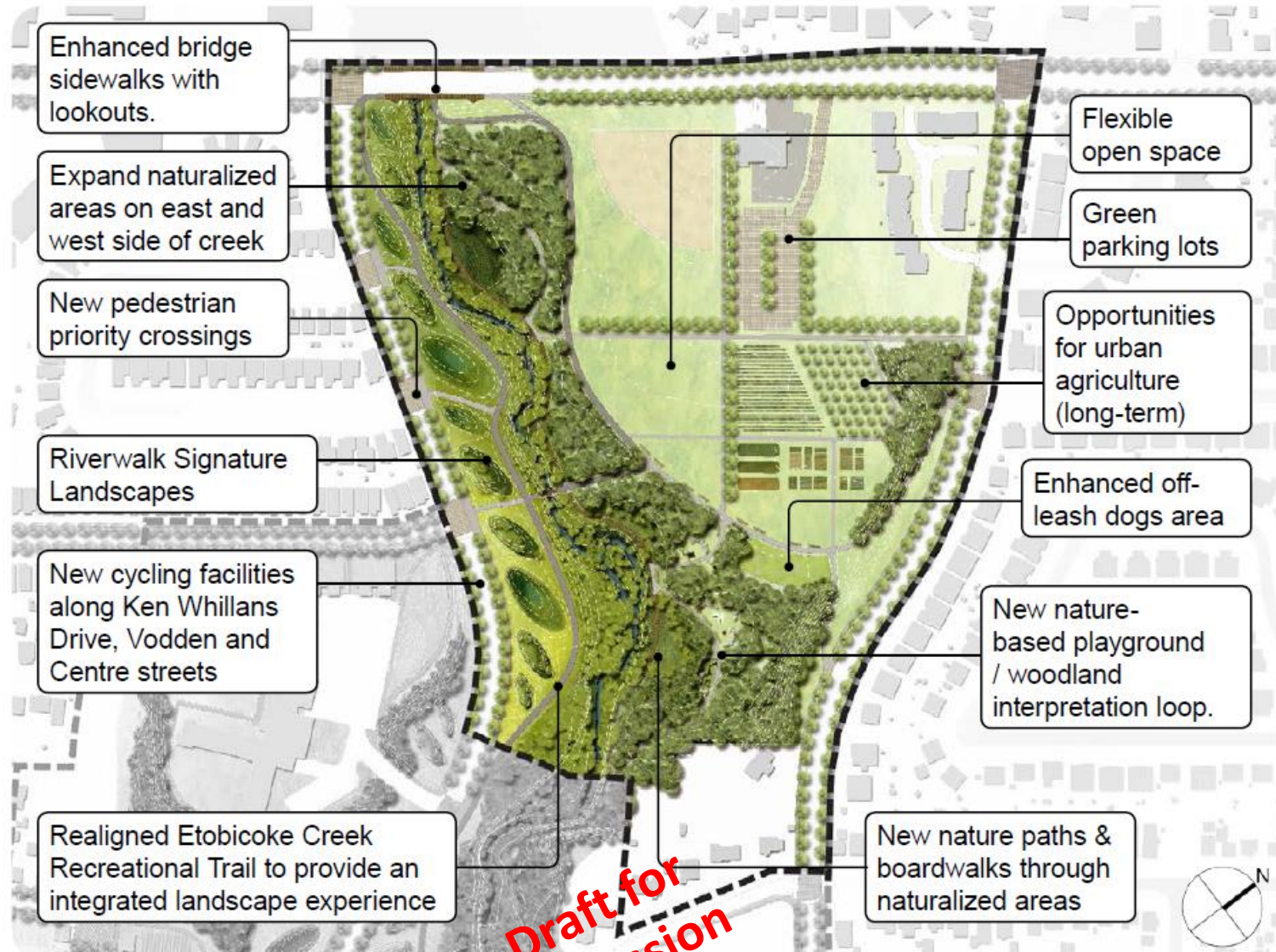
- Duggan Park
- Central Public School/  
Ken Whillans parkway
- Rosalea Park
- The Channel
- Centennial Park





# Design Intent and Concepts: Duggan Park

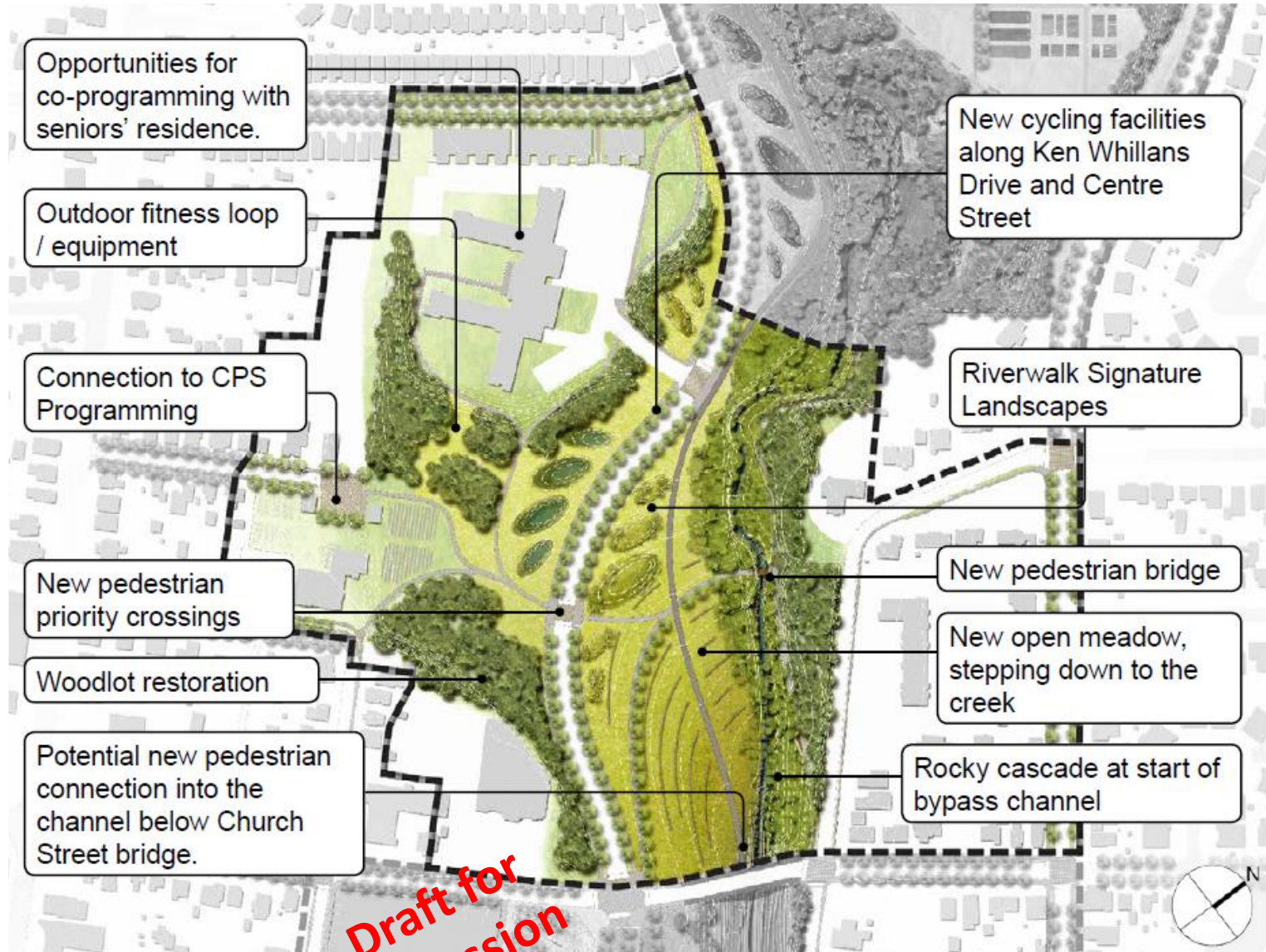
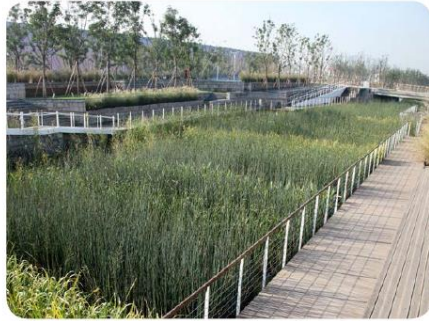
- Enhance and increase natural features (woodlot, wetland, riparian edge, etc).
- Establish new boardwalks and woodland trails.
- Provide improved access to the water's edge.
- Create new nature-based playground.
- Increase flexible space by relocating existing baseball fields, reconfiguring dogs-off leash area (long-term 10+ years)





# Design Intent and Concepts: Rosalea Park North

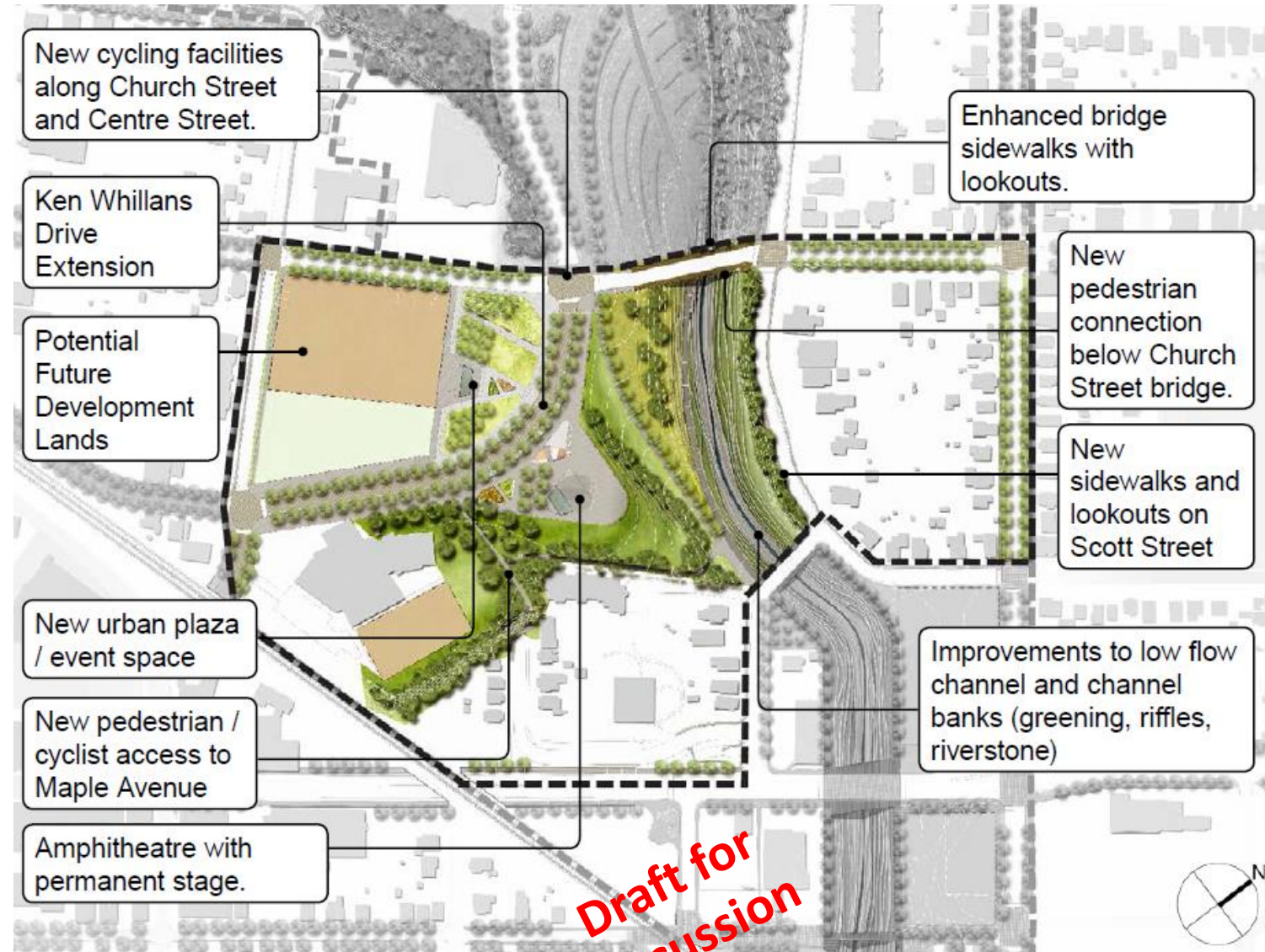
- Realignment and reconfiguration of Ken Whillans Drive into a complete street.
- Regrading of the space on the west side of the creek to create a new meadow landscape.
- Improvements to the Central Public School fields and facilities and connections with adjacent community.
- Creation of a rocky cascade feature at the mouth of the bypass channel.





# Design Intent and Concepts: Rosalea Park

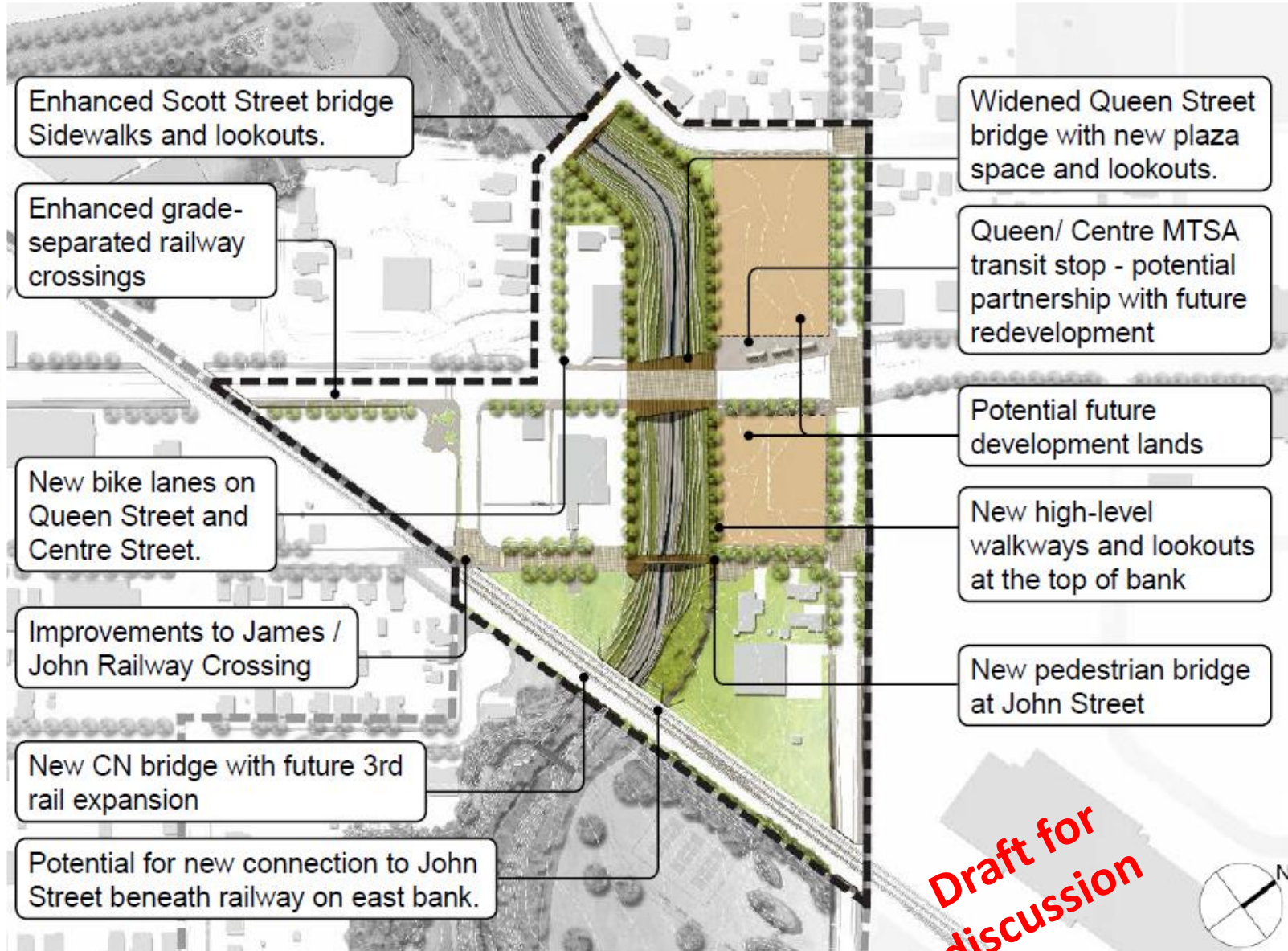
- Create an extension of Downtown public open space and events spaces
- Grassed amphitheater, water features, seasonal programming
- New urban plaza and event space
- Extension of Ken Whillans Drive, new flexible street
- New connection to the Etobicoke Creek.





# Design Intent and Concepts: Etobicoke Creek By-pass Channel

- The intersection between the valley/creek and the city. “A canyon through the city”.
- Rehabilitation of the Etobicoke Creek bypass channel to provide a better urban and ecological amenity.
- Reconnect the Etobicoke Creek Recreational Trail.
- New pedestrian / cycling bridge at John Street
- New public space and transit stop at Queen / Centre Streets





# Environment, Sustainability, Resilience, Public Health

## Opportunities:

- Bioswales along boulevards (existing reconfigured, relocated Ken Whillans Dr, new extension)
- SWP in Central Public School
- Pervious paving for parking areas
- Landscaped stepping along the channel
- Rain gardens
- Urban agriculture

### Protect, Preserve & Enhance

- Expand and enhance terrestrial and aquatic habitat for native flora and fauna.
- Enhance responsible interaction with the natural environment.
- Protect and preserve the most sensitive natural areas.
- Protect, enhance and establish new view corridors, vistas and visual connections.



### Sustainability & Resilience

- Exhibit sustainable best practices, innovative design and climate change leadership.
- Improve resiliency to climate change to increase natural capital and protect natural resources and ecosystems
- Incorporate resilience into the strategic, tactical and operational levels of the City.
- Foster equity through project planning, community engagement, and access to funding.



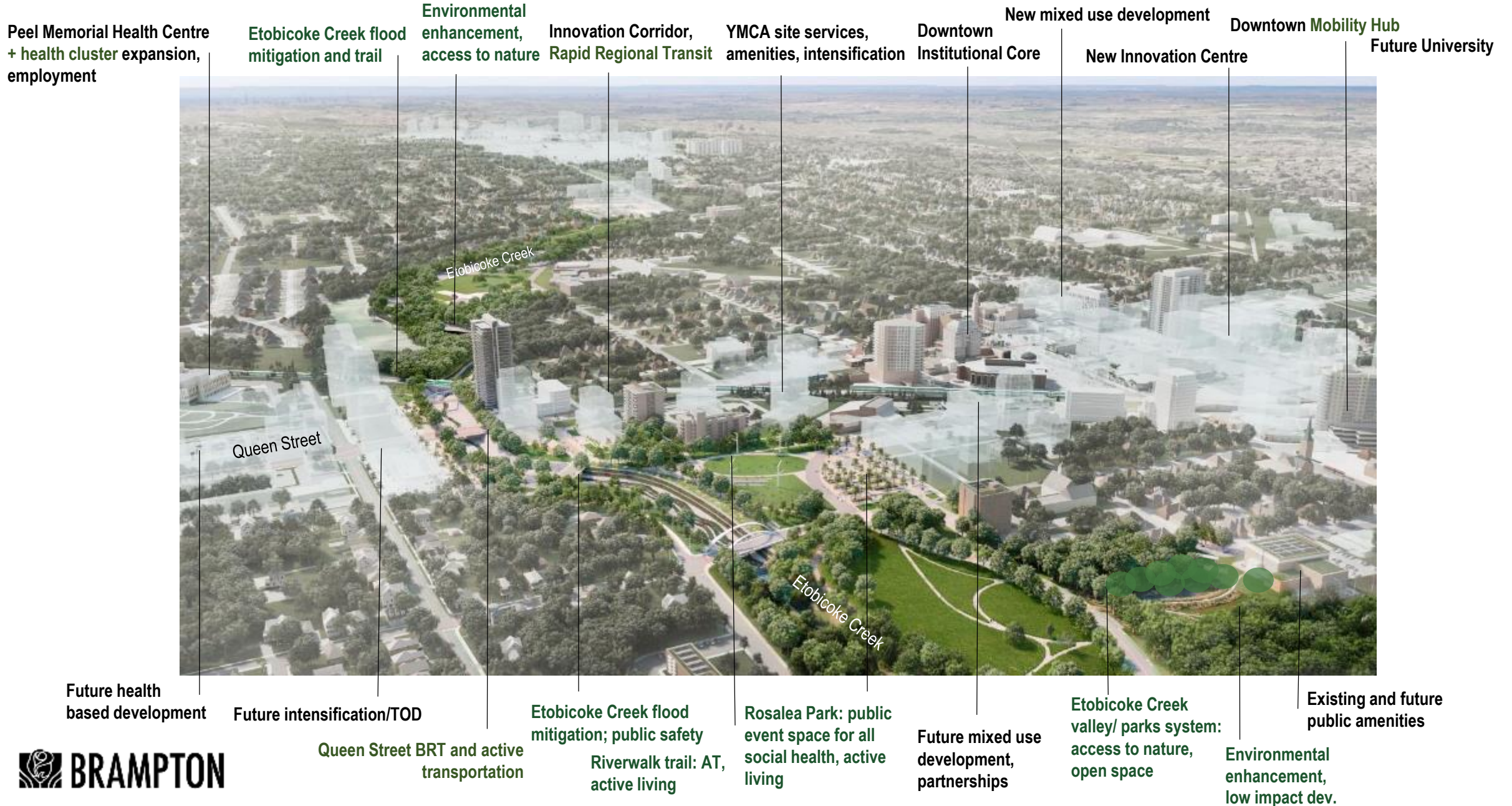
### Discovery, Education & Interpretation

- Showcase the rich cultural heritage associated with Downtown Brampton, the Etobicoke Creek and within the Riverwalk study area.
- Develop clear and consistent wayfinding and interpretive signage around major trail entry points and nodes.
- Share the story of the Etobicoke Creek's natural and human history through public art and other installations.





# Riverwalk Area: Downtown Revitalization and Development





# The Riverwalk Project: Conclusion

When completed the Riverwalk will:

- **Protect** from flood and disasters
- **Revitalize** Downtown and surrounding area
- **Trigger** infrastructure renewal
- **Generate** employment, attract people, investment
- **Build** community, support diversity, bring people together
- **Develop** central park system, **contribute to Brampton Eco Park**
- **Make a resilient, sustainable, healthy Downtown and City**
- **Support** diversity and culture, improve social life
- **Stimulate** new approaches, innovation, change





# Thank you!

