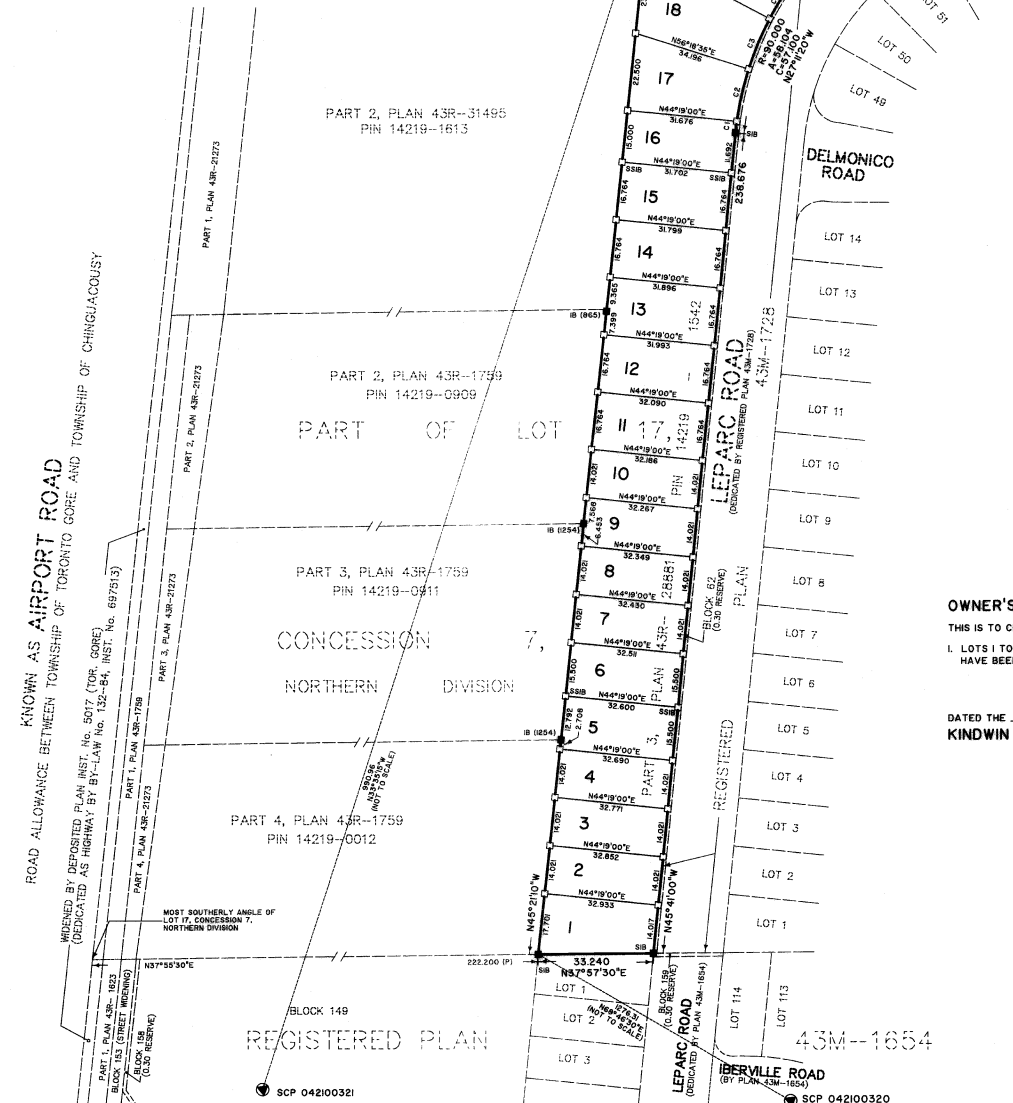


METRIC: DISTANCES AND COORDINATES ON THIS PLAN ARE IN METRES AND CAN BE CONVERTED TO FEET BY DIVIDING BY 0.3048.

CURVE TABLE				
NUM	ARC	RADIUS	BEARING	CHORD
C1	3.309	90.000	N44°37'50"W	5.308
C2	15.529	90.000	N38°38'00"W	15.510
C3	15.736	90.000	N28°40'05"W	15.716
C4	15.186	90.000	N9°29'05"W	15.145
C5	10.373	90.000	N8°59'45"W	10.367



ATTACHMENT 2

PLAN 43M-1923

I CERTIFY THAT THIS PLAN IS REGISTERED IN THE LAND REGISTRY OFFICE FOR THE LAND TITLES DIVISION OF PEEL No. 43 AT 15:56 O'CLOCK ON THE 3rd DAY OF April, 2013 AND ENTERED IN THE PARCEL REGISTER FOR PROPERTY IDENTIFIER NO. 14219-1542 AND THE REQUIRED CONSENTS ARE REGISTERED AS PLAN DOCUMENT NO. PR 2351632

Sandra Barbosa
Representative For Land Registrar

THIS PLAN COMPRISES ALL OF PIN 14219-1542.

PLAN OF SUBDIVISION OF PART OF LOT 17, CONCESSION 7, NORTHERN DIVISION

(GEOGRAPHIC TOWNSHIP OF TORONTO GORE)

NOW IN THE

CITY OF BRAMPTON REGIONAL MUNICIPALITY OF PEEL

SCALE 1:1000



SCHAEFFER DZALDOV BENNETT LTD.

NOTES

SYMBOL	DENOTES
□	PLANTED IRON BAR
■	FOUND MONUMENT
SSB	STANDARD IRON BAR
SSB	SHORT STANDARD IRON BAR
P	PLAN 43R-28881
PI	REGISTERED PLAN 43M-1728
M	MEASURED
922	SCHAEFFER DZALDOV BENNETT LTD.
1254	R.E. CLIPSHAM O.L.S.
PRC	POINT OF REVERSE CURVE

ALL FOUND MONUMENTS ARE NUMBERED 922 UNLESS NOTED OTHERWISE. THE 0.30 RESERVE HAS BEEN EXAGGERATED FOR CLARITY.

TOTAL AREA OF SUBDIVISION = 1.0971 ha.

BEARINGS ARE UTM GRID, DERIVED FROM SPECIFIED CONTROL POINTS 042100320 AND 042100321, UTM ZONE 17, NAD83 (ORIGINAL).

DISTANCES ARE GROUND AND CAN BE CONVERTED TO GRID BY MULTIPLYING BY A COMBINED SCALE FACTOR OF 0.999691.

SPECIFIED CONTROL POINTS (SCPs): UTM ZONE 17, NAD83 (ORIGINAL) COORDINATES TO URBAN ACCURACY PER SEC. 14(2) OF O.REG. 216/10		
POINT ID.	NORTHING	EASTING
SCP 042100320	4849612.291	601552.370
SCP 042100321	4848544.559	600688.921

COORDINATES CANNOT, IN THEMSELVES, BE USED TO RE-ESTABLISH CORNERS OR BOUNDARIES SHOWN ON THIS PLAN

SURVEYOR'S CERTIFICATE

I CERTIFY THAT:

- THIS SURVEY AND PLAN ARE CORRECT AND IN ACCORDANCE WITH THE SURVEYS ACT, THE SURVEYORS ACT, THE LAND TITLES ACT AND THE REGULATIONS MADE UNDER THEM.
- THE SURVEY WAS COMPLETED ON THE 17th DAY OF AUGUST, 2012.

DATE AUGUST 21, 2012.

Dan Dzaldov
DAN DZALDOV
Ontario Land Surveyor

SCHAEFFER DZALDOV BENNETT LTD.
ONTARIO LAND SURVEYORS

64 JARDIN DRIVE CONCORD, ONTARIO L4K 3P3 TEL (416) 987-0101
DRAWN: ACAD/SL/LW CHECKED: WMF SCALE 1:1000 JOB NO. 02-108-06-02B

NOVEMBER 16, 2012

OWNER'S CERTIFICATE

THIS IS TO CERTIFY THAT:

- LOTS 1 TO 20, BOTH INCLUSIVE AND BLOCK 21, HAVE BEEN LAID OUT IN ACCORDANCE WITH OUR INSTRUCTIONS.

DATED THE 20th DAY OF AUGUST, 2012.

KINDWIN DEVELOPMENT CORPORATION

DAVID BRAND - PRESIDENT
I HAVE THE AUTHORITY TO BIND THE CORPORATION

MUNICIPAL APPROVAL
21T-03-0078
APPROVED UNDER SECTION 51 OF THE
PLANNING ACT, R.S.O. 1990 THIS 28 DAY
OF MAY, 2013.

[Signature]
COMMISSIONER, PLANNING, DESIGN AND
DEVELOPMENT DEPARTMENT OF THE
CITY OF BRAMPTON