

Netherlands

Circular Economy Living lab Pilot Project City of Brampton

NL

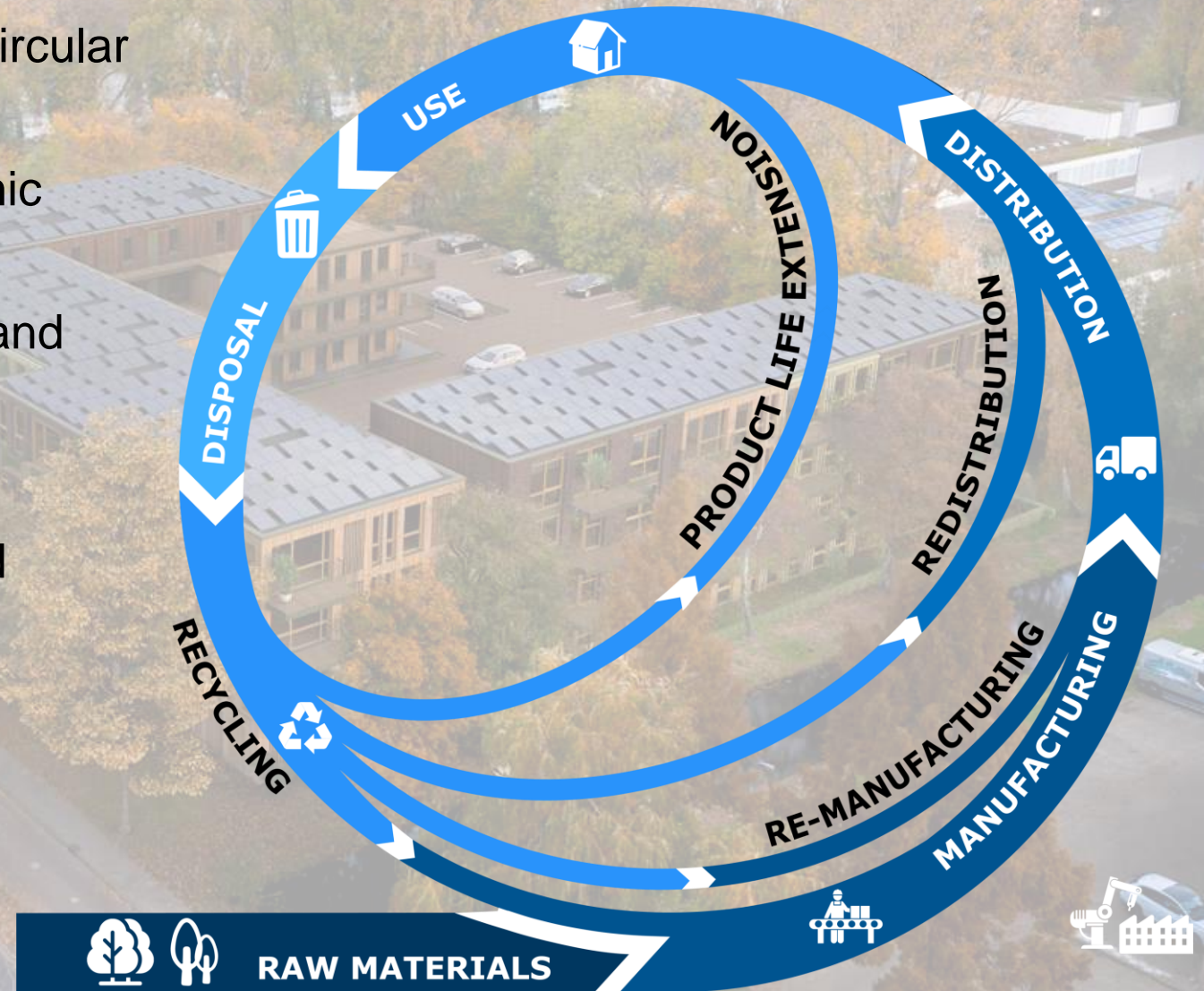


Finch Buildings

Finch Building

Vision

- Dutch Government is aiming for a complete Circular economy by 2050
- Consulate General promotes bilateral economic relations
- Organizes Events, trade missions, Webinars and Workshops
- Assists in Establishment of Pilot Projects
- 'living lab': sharing of information, insights and ideas between Dutch and Canadian partners.



Approach

Living Lab Pilot in the GTA;

- Dutch sustainability efforts to be implemented in Canada or vice versa
- Collaborating knowledge institutes could co-operate in data collection
- Sustainability initiatives and concepts could potentially be upgraded to larger marketable scale.

Technology demonstration, research, testing, training and dissemination.

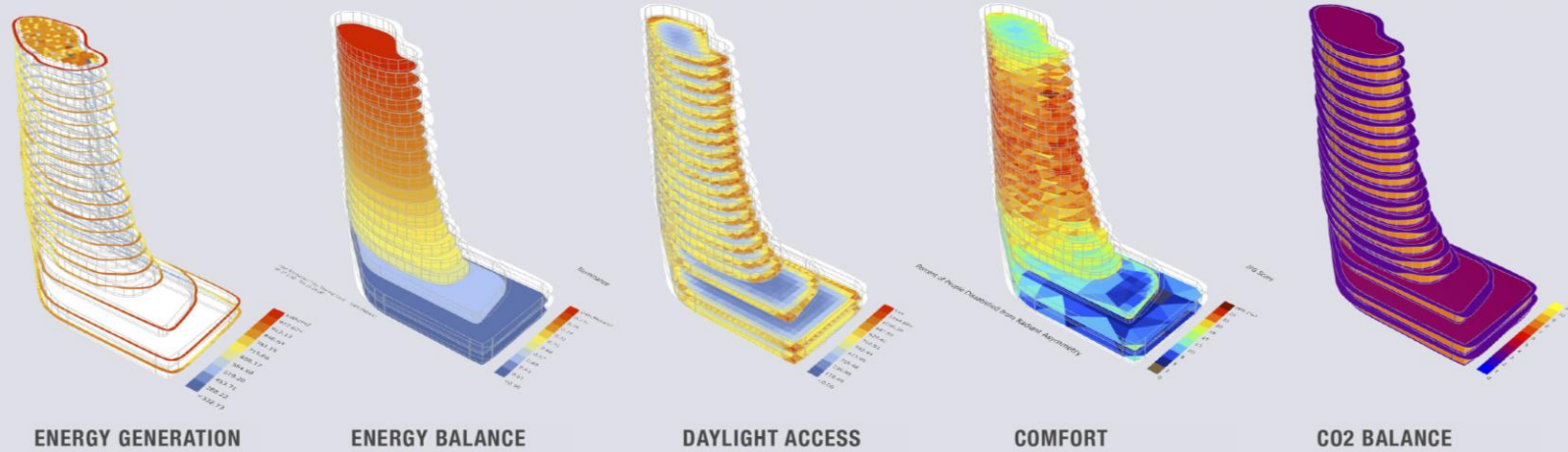


Finch Buildings, Photo Kees Hummel

Concept

Innovative and efficient energy concept

- Reduce the energy requirements as in “Passive House”.
- Generating Energy from renewable resources.
- Provide surplus energy for transportation and delivers power back to the grid.



CLIFF

CIRCULARITY

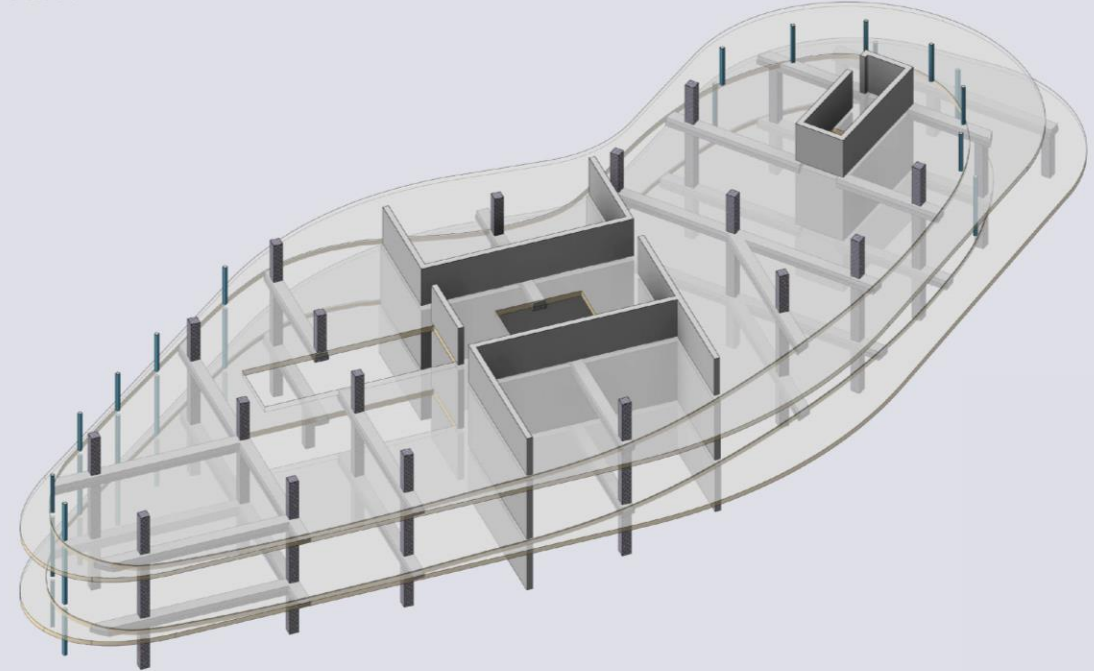
ENERGY GENERATING STRUCTURE,

DELIVERS MORE ELECTRICITY THAN
REQUIRED FOR OPERATION,

100% RENEWABLE ENERGY THROUGH OVER
2,000 M2 OF PV PANELS

5X MORE PV AREA THAN ROOF SURFACE
THROUGH OPTIMIZED BUILDING ENVELOPE
DESIGN

45/55% GLAZED FACADES FOR OPTIMIZED
DAYLIGHT ACCESS AND ENERGY
PRESERVATION

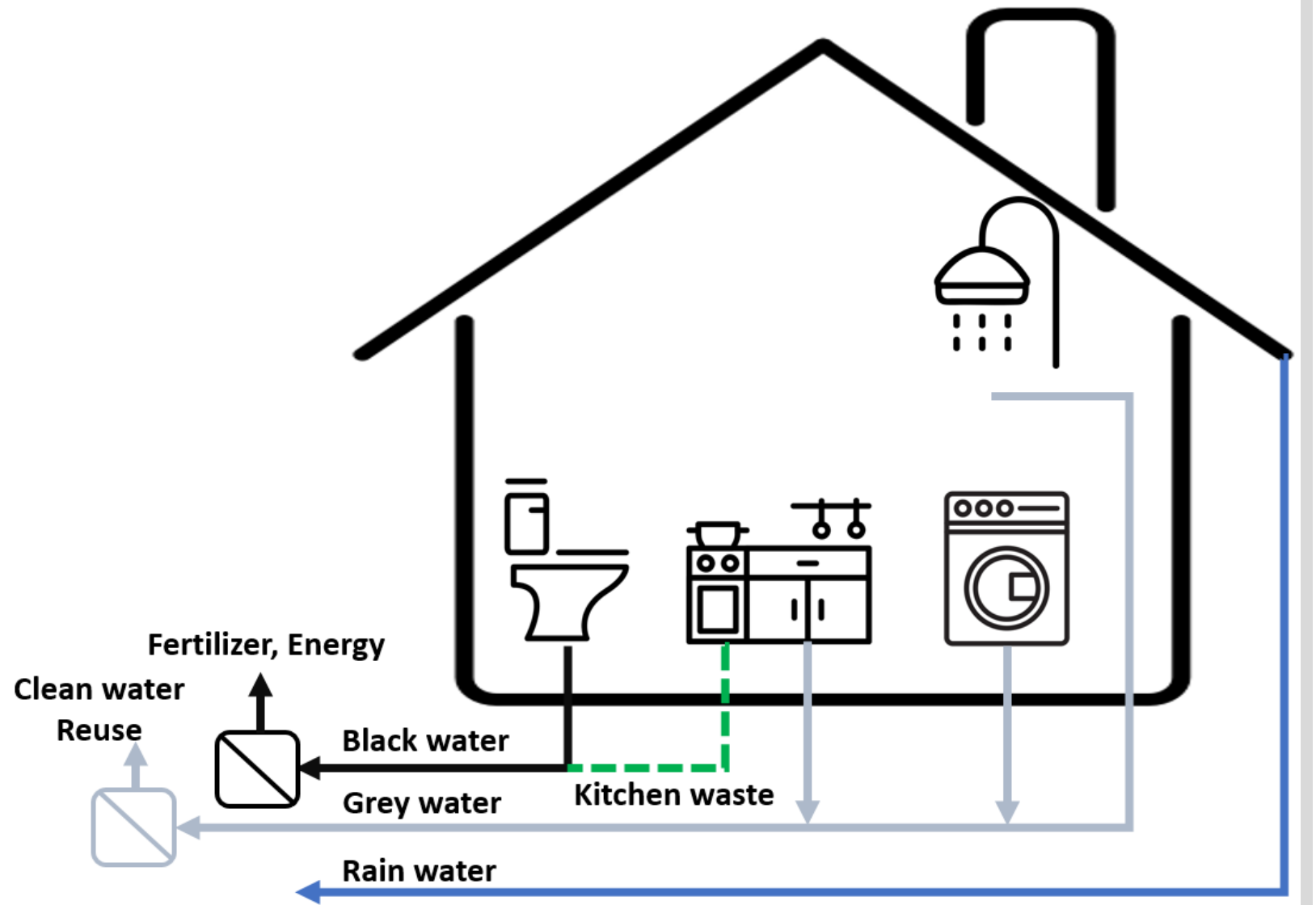


FRITS VAN DONGEN
ARCHITECTS AND PLANNERS

Concept

Construction that will **Balance CO2 emission** through;

- The reuse, recycling and upcycling of materials,
- Regenerative or biobased materials.
- Innovative building design with materials and technologies that will address sustainability challenges.



Concept

The creation of a positive living/working experience for People and the Earth.

- All Inclusive
- Affordable housing
- All Age Strategies,
- Support Cultural Diversity



Finch Buildings, Photo Kees Hummel

Search

To partner with an organization in the GTA which (developer or landowner) to initiate a “living lab” or Passive House/Office pilot project according to the local needs and requirements.

Boundaries

Consulate General will not be able to engage in any legal/ development/investment/financing activities associated with the pilot project.

The Consulate General will be able to:

- Promote the pilot project through its network
- Assist in recruiting the relevant and appropriate parties/partners required to participate in the pilot project
- Assist in the communication between Dutch and Canadian parties during the initial phase of the pilot project
- Disseminate information and results through an article, workshop or social media updates

Questions

