



STATUTORY PUBLIC MEETING

May 10th, 2021

CITY OF BRAMPTON

ZONING BY-LAW AMENDMENT (OZS-2021-0008)
1685 QUEEN STREET EAST

MARTINWAY BRAMALEA PROJECT INC

WESTON
CONSULTING



THE PROJECT TEAM



KRCMΛR™



AIR PHOTO

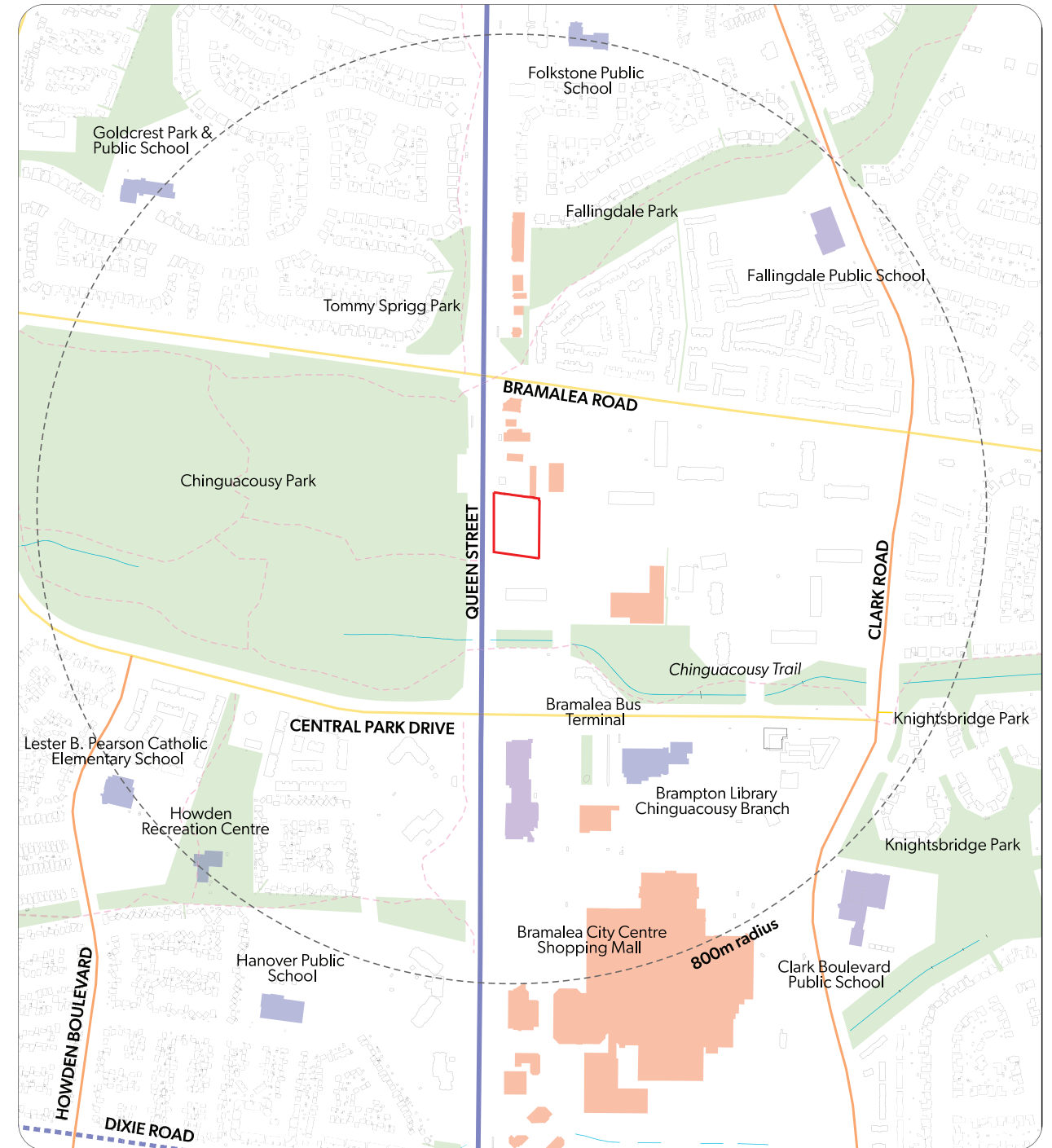


- Area: 0.74 hectares (1.83 acres)
- Frontage: 97.6 metres along Queen Street East
- Generally rectangular in shape

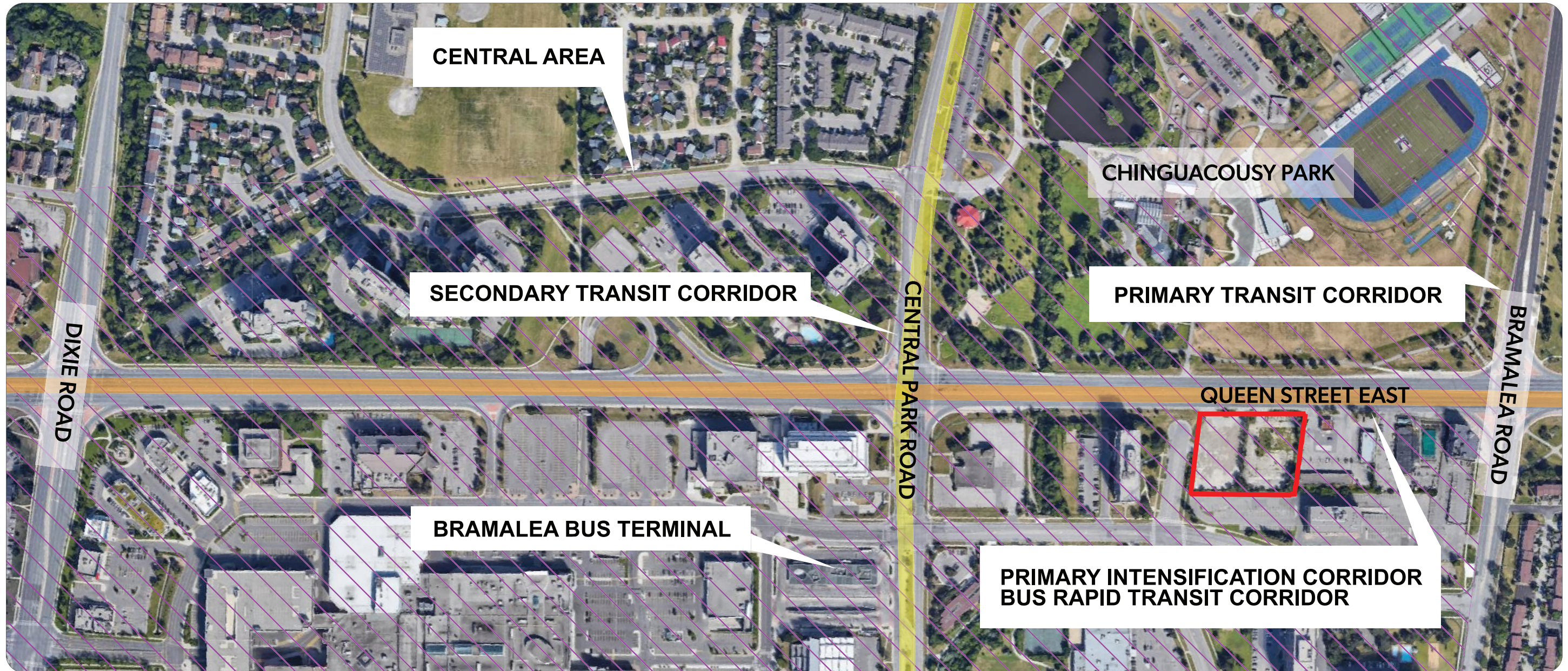
SITE CONTEXT

Surrounding Land Use

- North: Chinguacousy Park and related amenities
- South: Commercial and high-rise residential uses
- East: Commercial and office uses
- West: Residential high-rise and institutional uses



POLICY CONTEXT



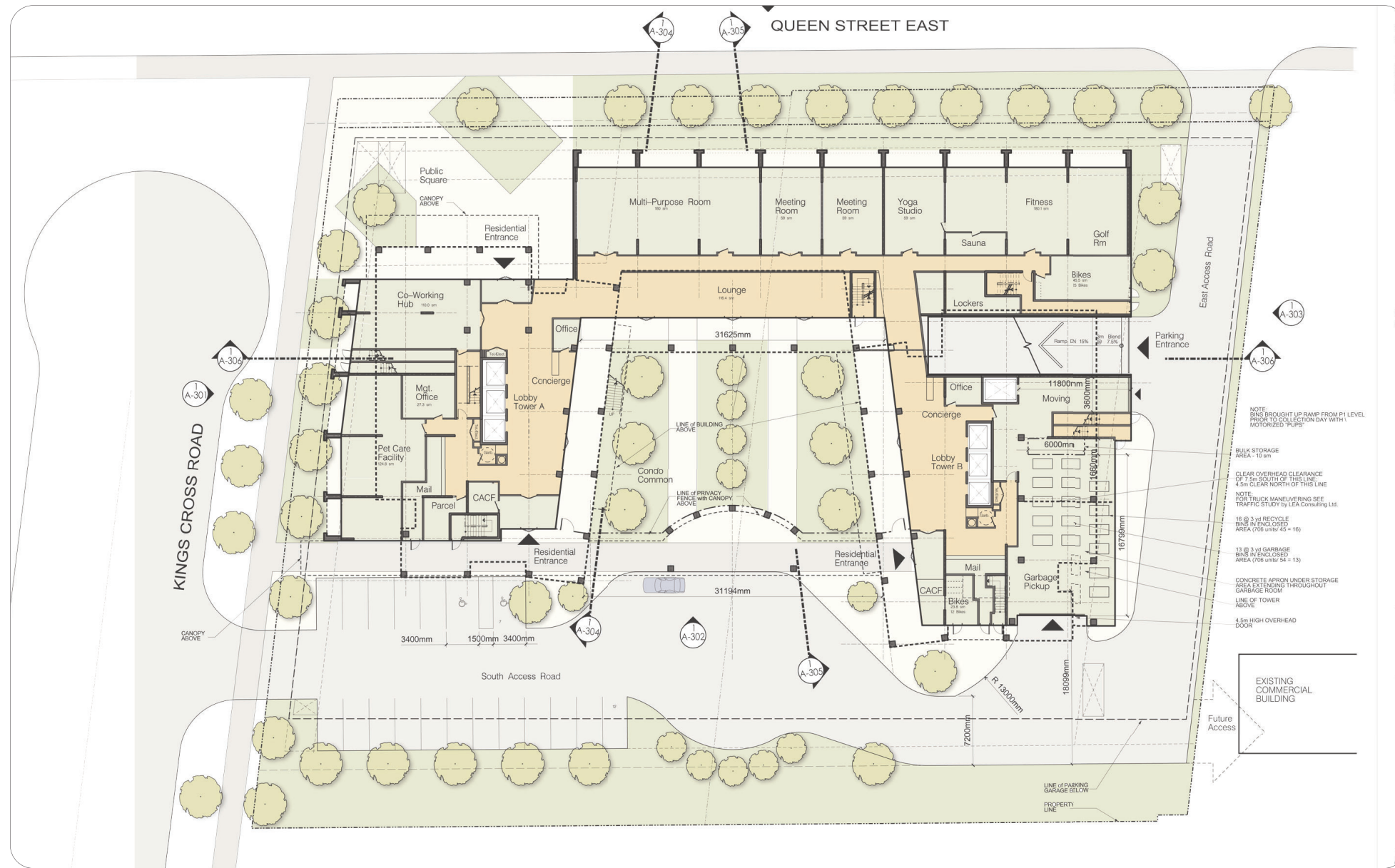
APPLICATION SUMMARY



Project Stats

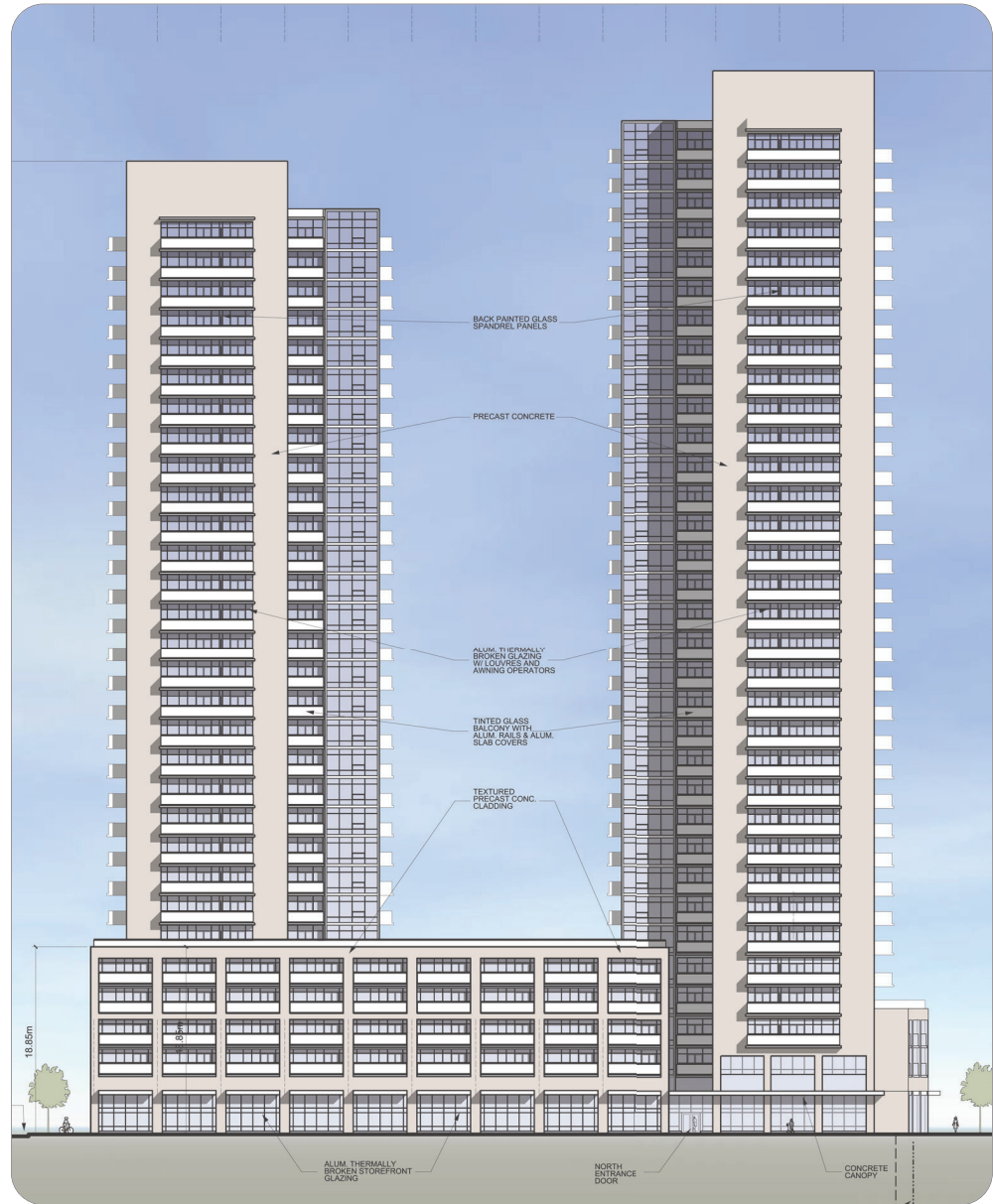
- Total GFA: 51,025.7 m²
- FSI (gross): 6.86
- Lot coverage (net): 36.8%
- Height:
 - Tower A: 33 storeys (101.5 metres)
 - Tower B: 30 storeys (90.3 metres)
- 5-storey podium
- Unit Breakdown:
 - 1 bedroom: 576
 - 2 bedroom: 128
 - Total: 704
- 4 levels of underground parking
- Total of 663 parking spaces with 19 at-grade
- 3,280 m² of amenity space = 4.66 m² per unit

GROUND FLOOR PLAN

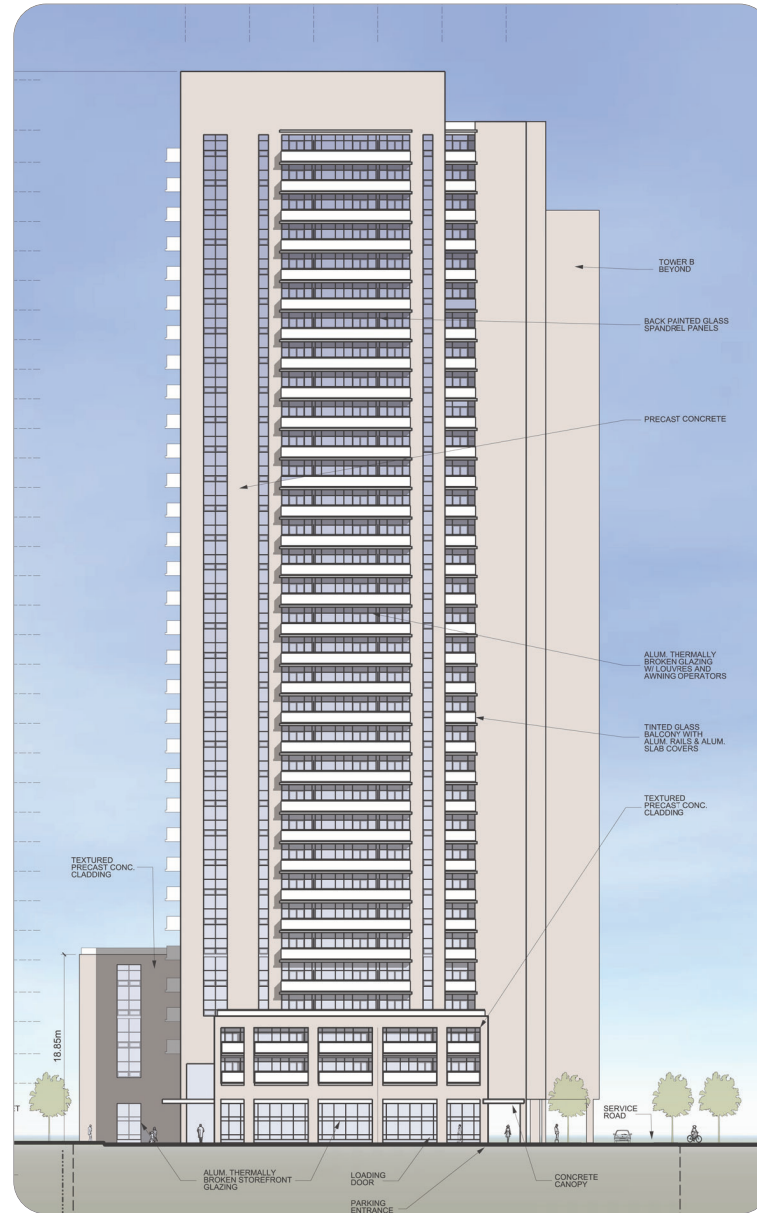


RENDERINGS/ELEVATIONS

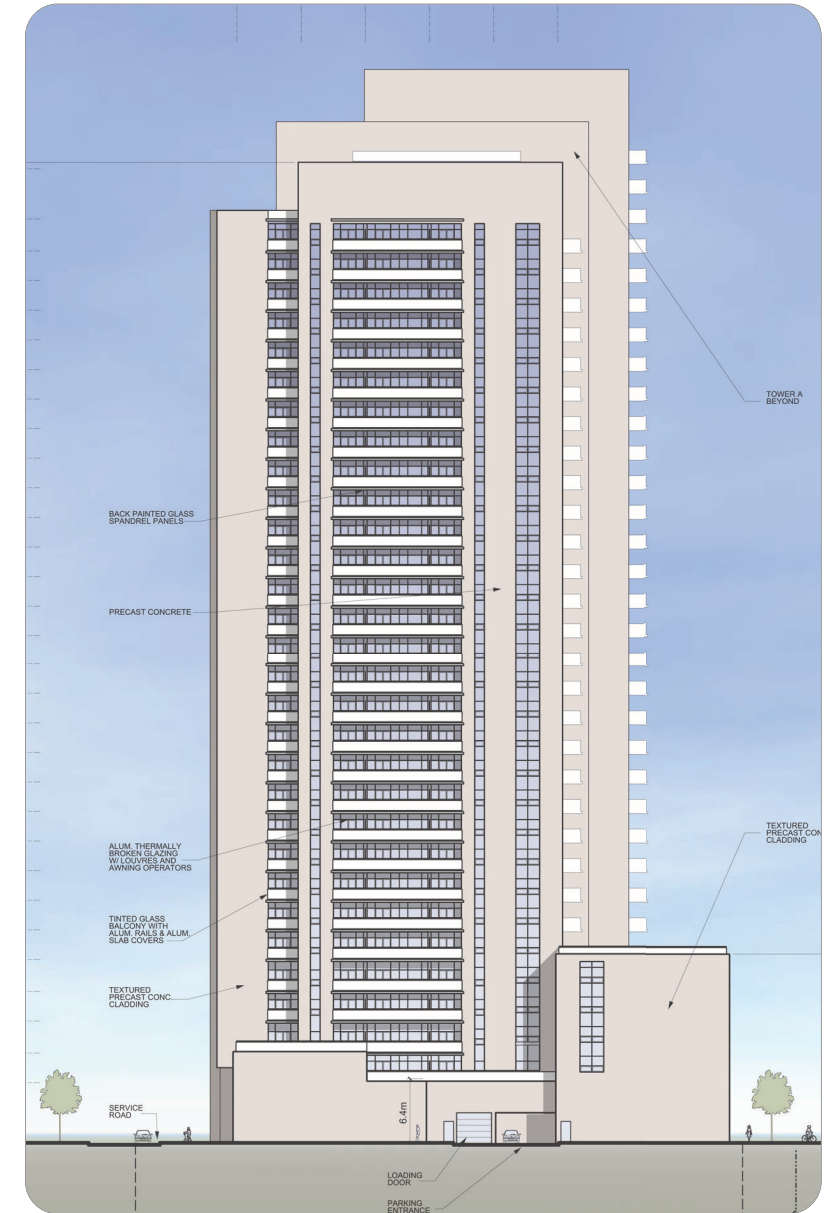
NORTH ELEVATION



WEST ELEVATION TOWER A

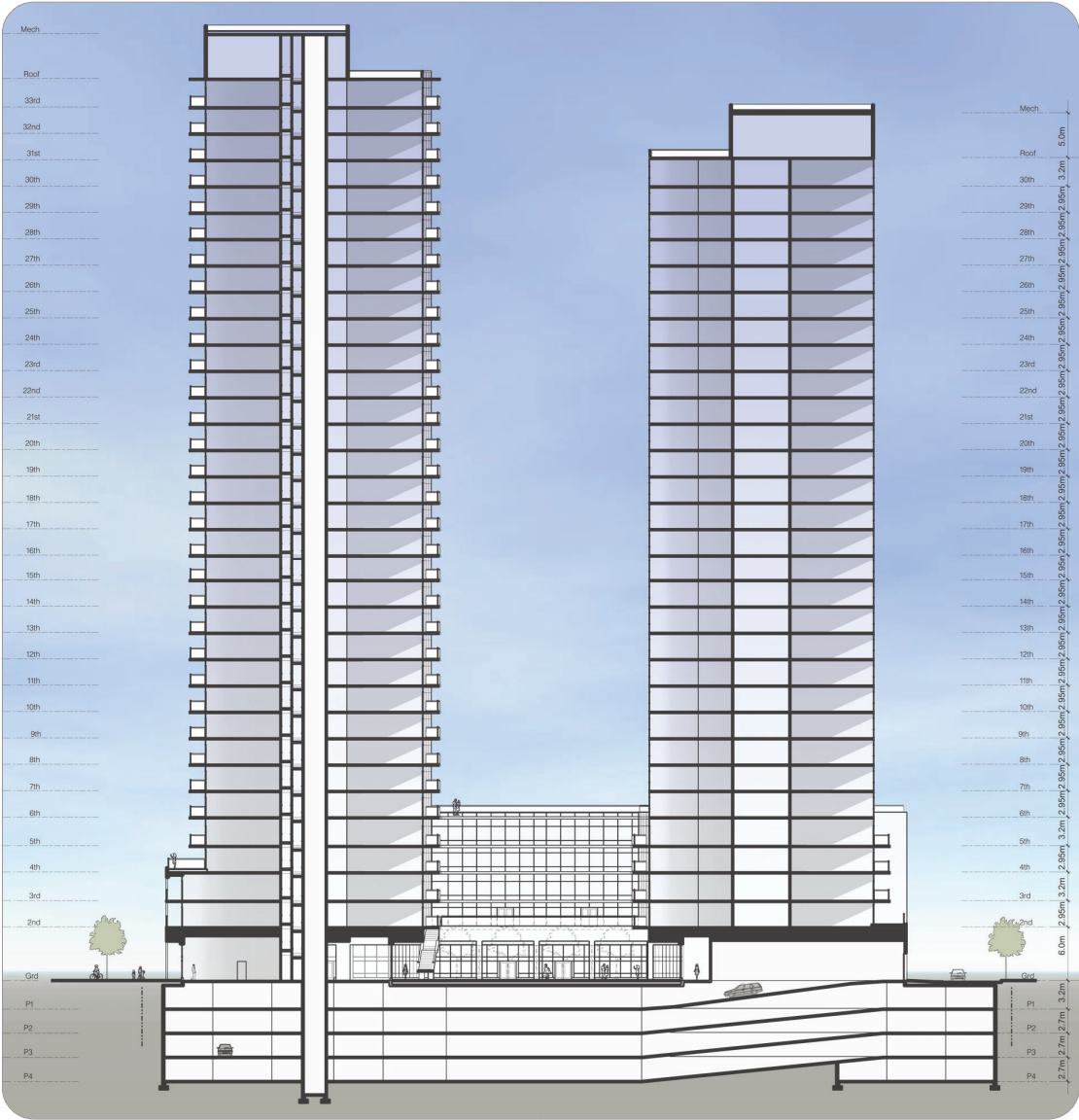


EAST ELEVATION TOWER B

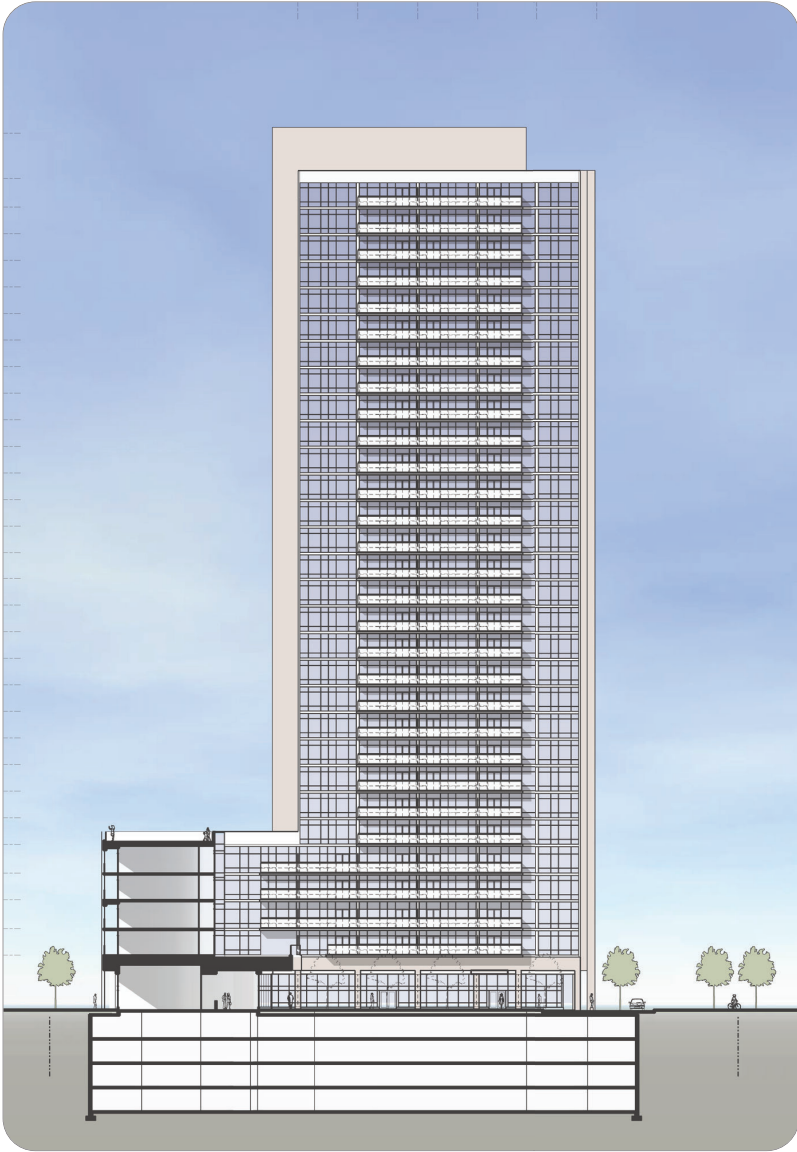


BUILDING SECTIONS

EAST/WEST SECTION LOOKING NORTH



NORTH/SOUTH SECTION LOOKING EAST



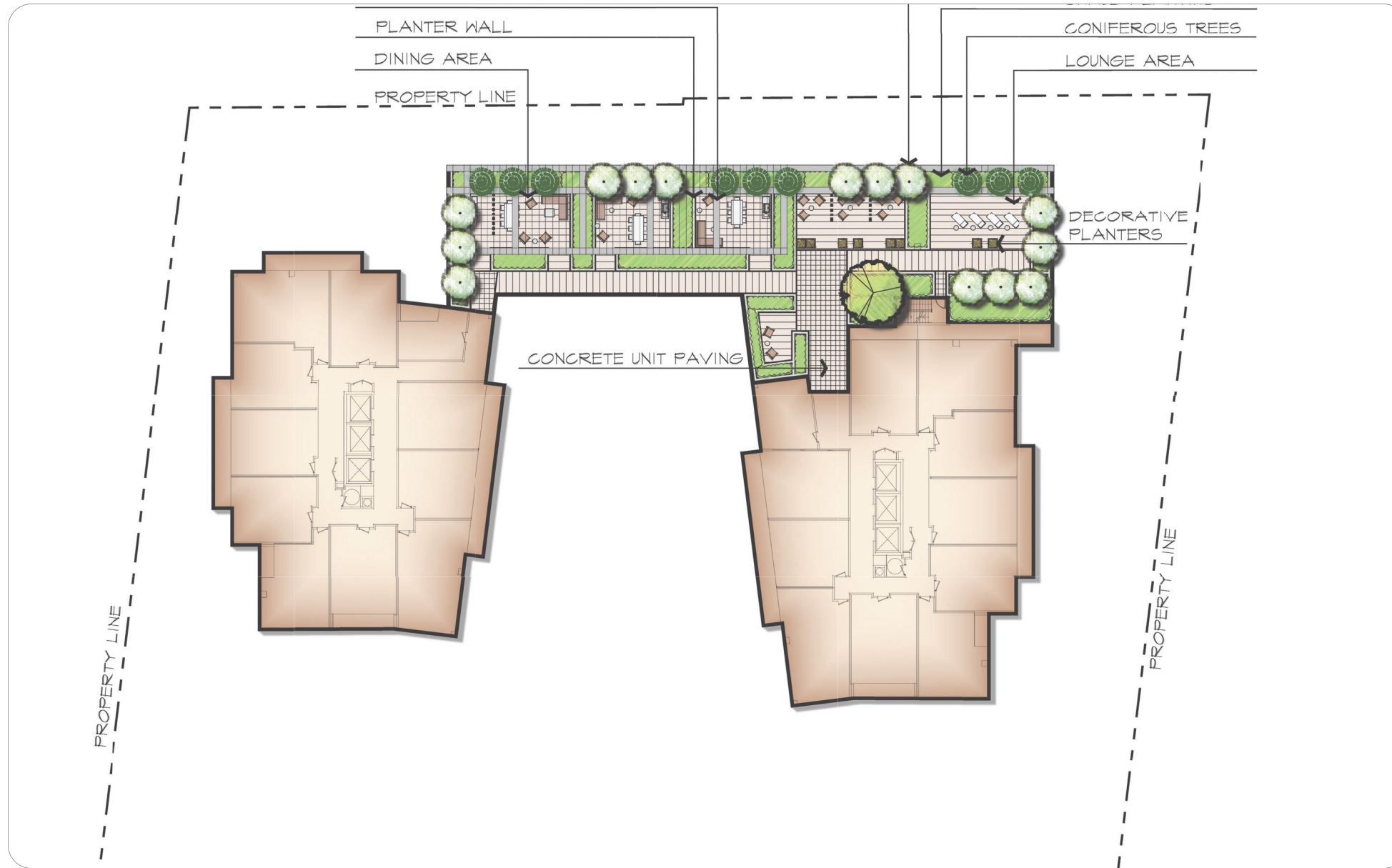
NORTH/SOUTH SECTION LOOKING WEST



LANDSCAPE PLAN



TERRACE PLAN





THANK YOU

Comments & Questions?

Michael Vani, RPP, Weston Consulting
Chris Bullock, Martinway Bramalea Project Inc
Harry Christakis, Principal, HCA Architects