



Delegation to City of Brampton  
May 10, 2021



Thomas Fischer  
Vice President of Partnerships



***Thomas Fischer***  
***Vice President of Partnerships***

- ✓ 12+ years working with Habitat for Humanity
  - ✓ Dedication to providing affordable housing solutions to communities across Ontario
  - ✓ Successful housing builds in Peel Region

***NOW Housing***

- ✓ *Ontario based*
- ✓ *Modular construction*
- ✓ *Pre-fabricated in a factory*
- ✓ *Permanent or temporary*

**< OUR JOURNEY  
BEGAN BY TURNING  
THIS...**

**INTO  
THIS... >**





**OR THIS...**

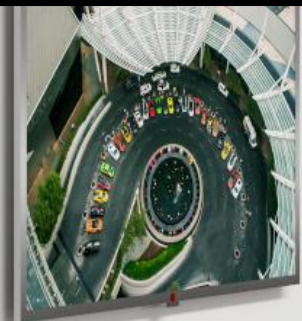




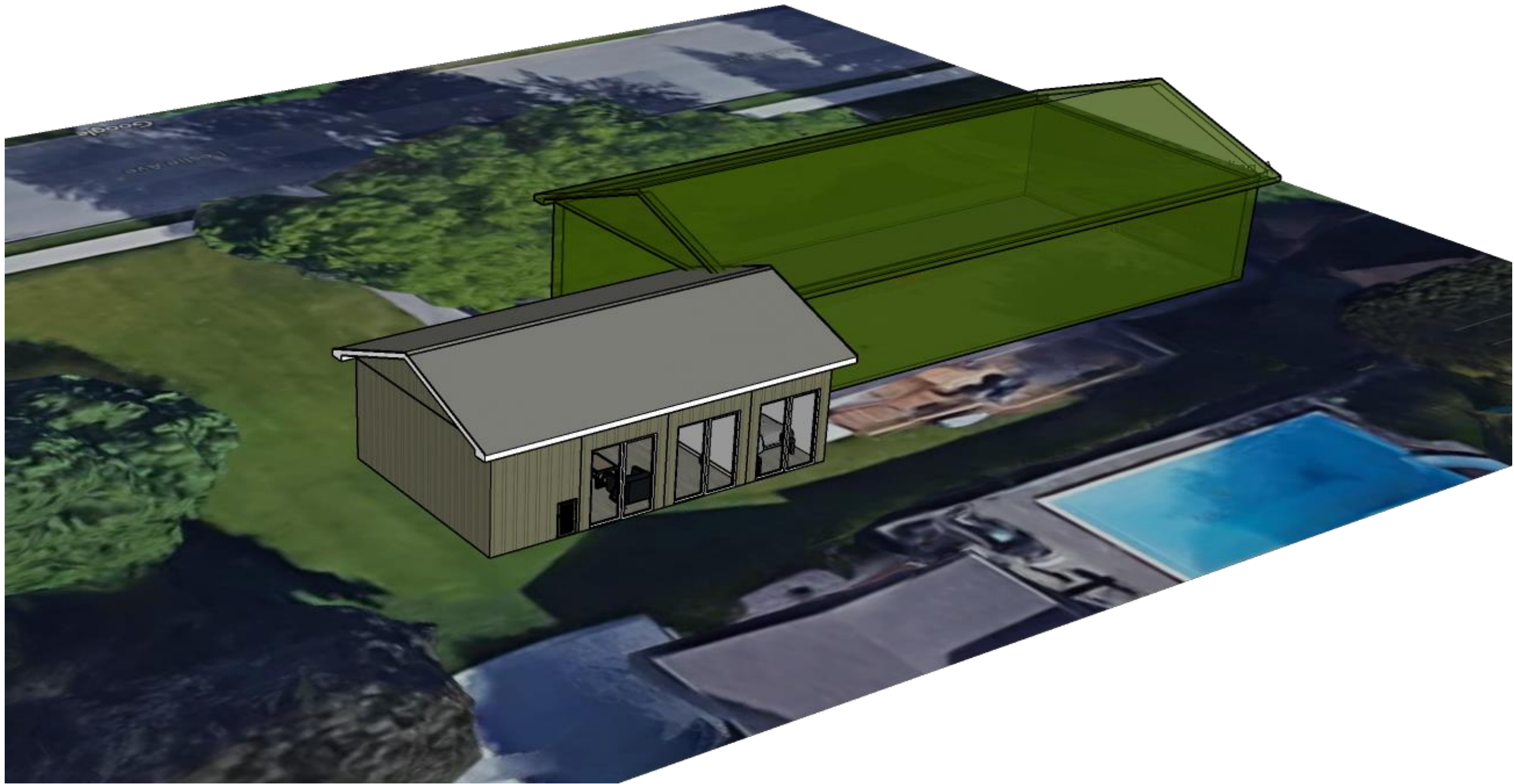
# INFILL - CURRENT ROJECT LOW-RISE MODELS EXTERNAL WALKWAY







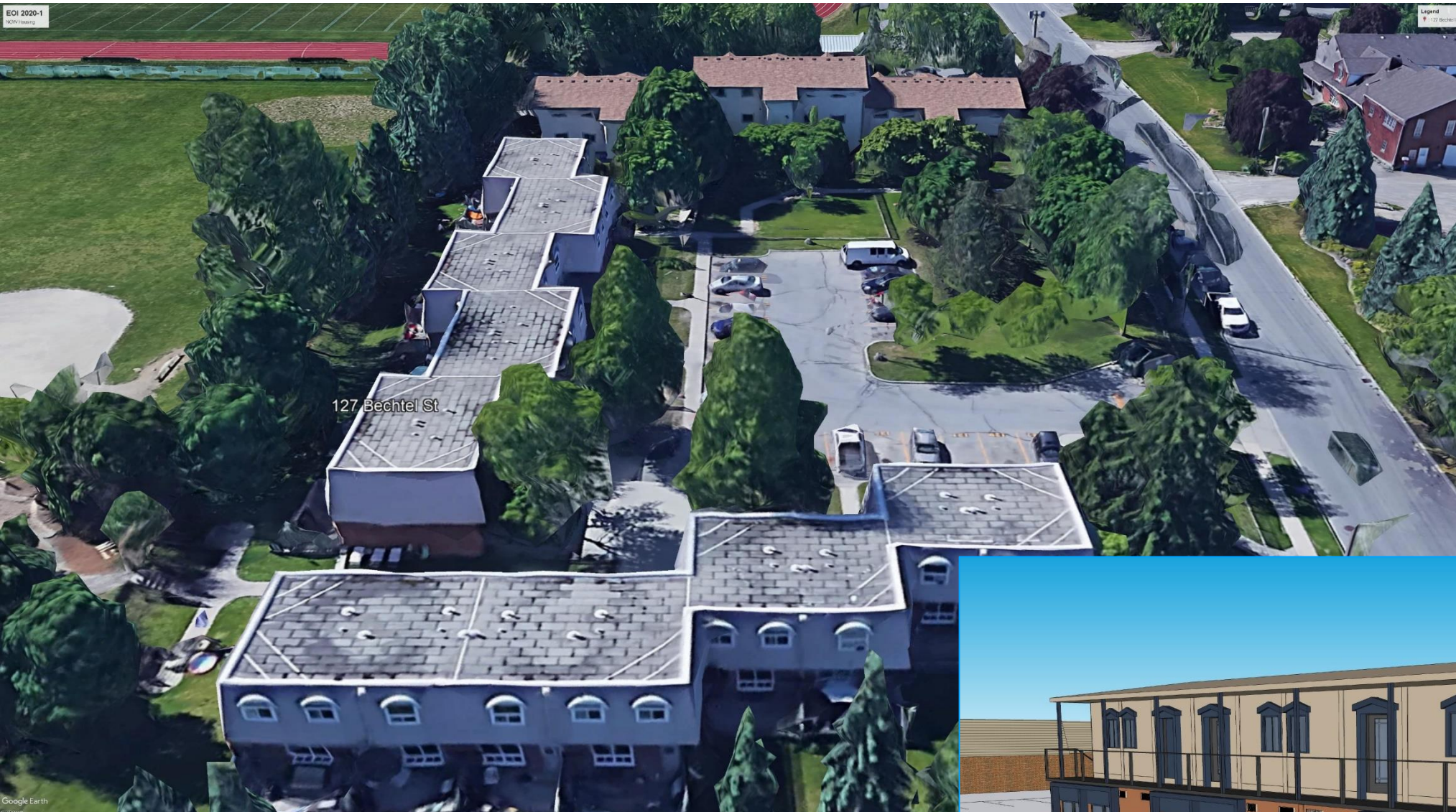
## SINGLE UNIT INFILL





# BECHTEL STREET - CAMBRIDGE

## Affordable Housing Infill





# Proposed - LOW-RISE INTERNAL CORRIDOR





## 2-STORY - PROPOSED 320 sq.ft, bachelor units



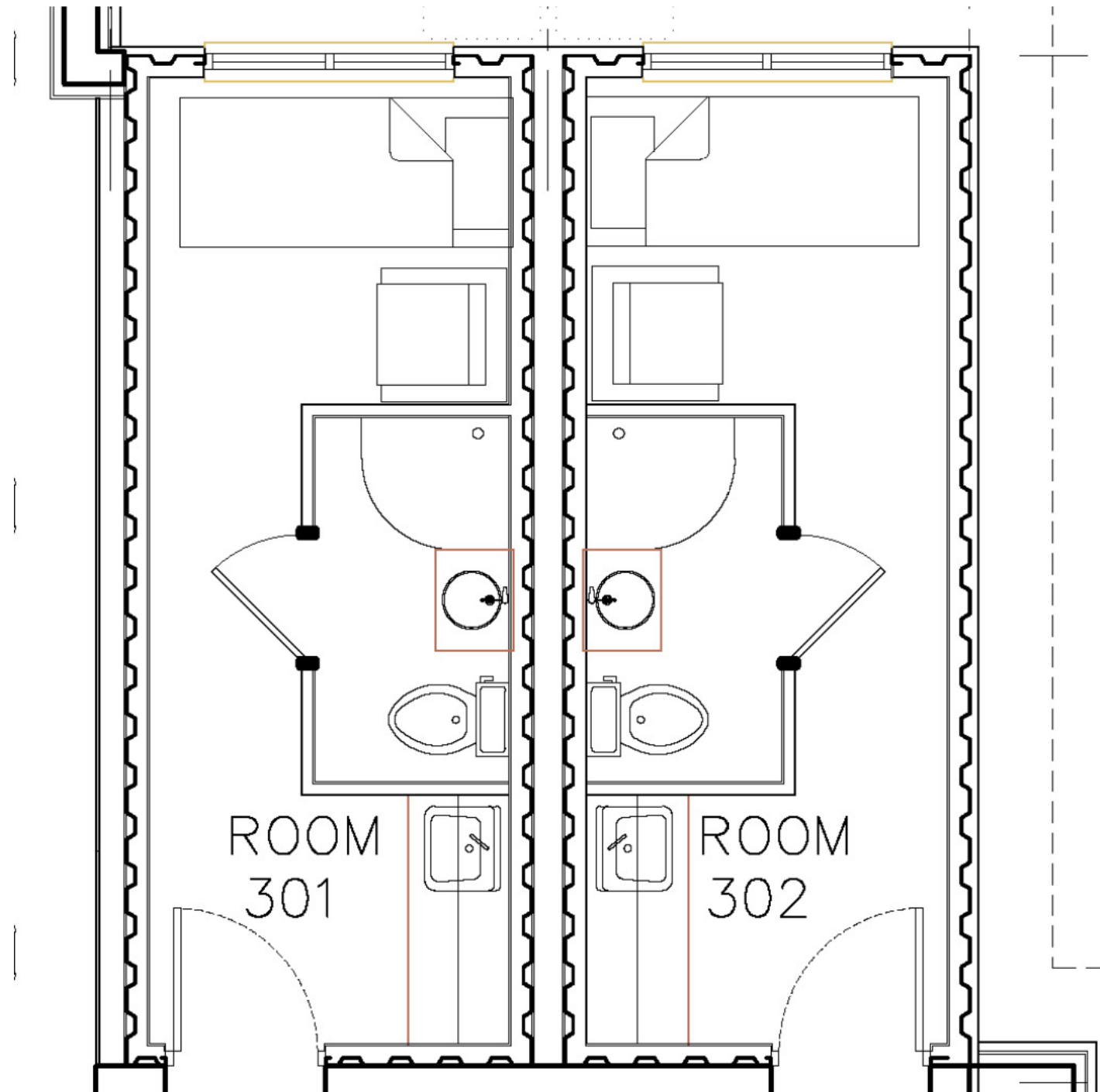


# 1250sq.ft 5 BEDROOM SHARED LIVING FLOOR PLAN





# Single Room Occupancy FLOOR PLAN





NOW Housing will work to:

- ✓ Design-build housing to meet the specific needs of residents
- ✓ Consideration of cultural needs
- ✓ Co-housing or self contained floor plans
- ✓ Consider accessibility and visitability needs
- ✓ We are willing to work with housing partners identified by the City of Brampton





Contact Us

Phone: (800) 858-1002

Email: [experts@NOWhousing.com](mailto:experts@NOWhousing.com)

Website: [www.NOWhousing.com](http://www.NOWhousing.com)