

PLAN OF SUBDIVISION OF
PART OF BLOCK 339
PLAN 43M-1812
CITY OF BRAMPTON
REGIONAL MUNICIPALITY OF PEEI

SCALE 1:500
RADY-PENTEK & EDWARD SURVEYING LTD., O.L.S.
METRIC
DISTANCES AND COORDINATES SHOWN ON THIS PLAN ARE IN METRES
AND CAN BE CONVERTED TO FEET BY DIVIDING BY 0.3048.

MUNICIPAL APPROVAL

APPROVED UNDER SECTION 51 OF
THE PLANNING ACT, R.S.O. 1990
THIS 15TH DAY OF AUGUST, 2013
B. P. Pentek
ACTING CHIEF OFFICER, CITY OF BRAMPTON
PLANNING DESIGN AND DEVELOPMENT DEPARTMENT
CORPORATION OF THE CITY OF BRAMPTON

SURVEYOR'S CERTIFICATE

I CERTIFY THAT:
1. THIS SURVEY AND PLAN ARE CORRECT AND IN ACCORDANCE WITH THE
SURVEY ACT, THE SURVEYORS ACT AND THE LAND TITLES ACT AND THE
REGULATIONS MADE UNDER THEM.
2. THE SURVEY WAS COMPLETED ON THE 26TH DAY OF JULY, 2013.
DATE JULY 17TH, 2013
C. P. Edward
C. P. EDWARD
ONTARIO LAND SURVEYOR

OWNER'S CERTIFICATE

THIS IS TO CERTIFY THAT:
1. BLOCKS 1 TO 35, BOTH INCLUSIVE, STREETS NAMED BAYCLIFFE CRESCENT (BOTH PORTIONS),
AFFLECK ROAD, BUTTERNORTH ROAD, ARIEL ROAD, CROSSBELL ROAD,
DELANE LANE AND PESCARA LANE HAVE BEEN Laid OUT IN
ACCORDANCE WITH OUR INSTRUCTIONS.
2. THE STREETS ARE HEREBY DEDICATED AS PUBLIC HIGHWAYS
TO THE CORPORATION OF THE CITY OF BRAMPTON.
DATED THE 26TH DAY OF JULY, 2013.
MATTAMY (CREDIT RIVER) LIMITED
100
FRANK DORACIN
AUTHORIZED SIGNING OFFICER
I HAVE THE AUTHORITY TO BIND THE CORPORATION

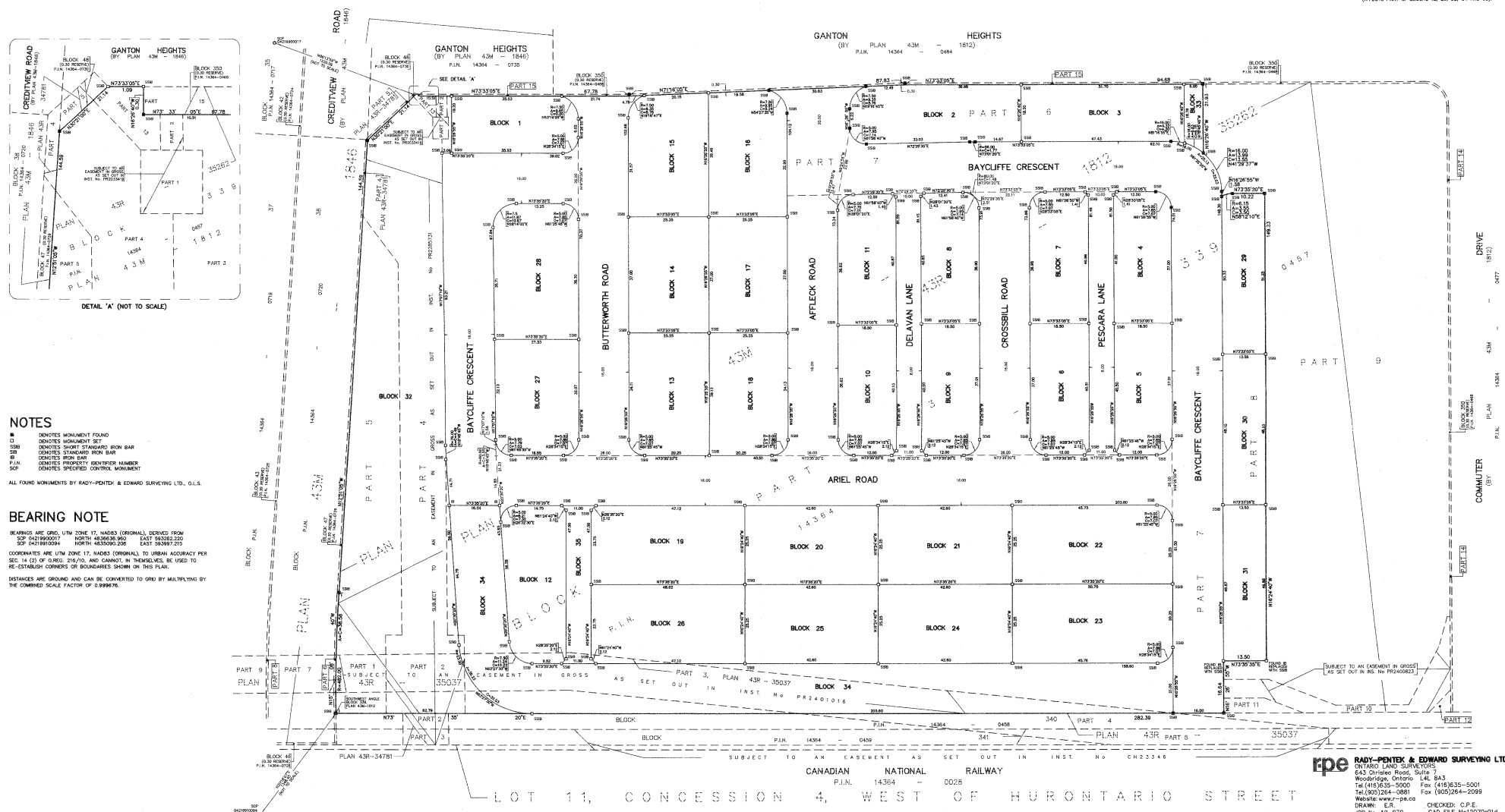
ATTACHMENT 2

PLAN 43M-1932

I CERTIFY THAT THIS PLAN IS REGISTERED
IN THE LAND REGISTRY OFFICE FOR THE
LAND TITLES DIVISION OF PEEL (No. 43)
AT 1:50 SCALE ON THE 18TH
DAY OF August 2013 AND ENTERED IN
PARCEL REGISTRY FOR PROPERTY
IDENTIFIER 1324-0571 AND THE
REQUIRED CONSENTS ARE REGISTERED AS
PLAN DOCUMENT NO. 2417540

Sandra Barbosa
REPRESENTATIVE FOR LAND REGISTRAR

THIS PLAN COMPREHENDS PART OF PLAN 14364-0457.
SUBJECT TO AN EASEMENT IN GROSS OVER PARTS 1 AND 2,
PLAN 43M-3502 AS SET OUT IN INST. NO. PR23349
(AFFECTS PART OF BLOCK 32) SUBJECT TO AN EASEMENT
IN GROSS OVER PART 4, PLAN 43M-3502 AS SET OUT IN
INST. NO. PR23349 (AFFECTS PART OF BLOCKS 32 AND 34)
SUBJECT TO AN EASEMENT IN GROSS OVER PARTS 1, 2
AND 3, PLAN 43M-3502 AS SET OUT IN INST. NO. PR24016
(AFFECTS PART OF BLOCKS 12, 26, 35, 34 AND 35)



NOTES

- DENOTES MONUMENT FOUND
- DENOTES MONUMENT SET
- DENOTES SHORT STANDARD IRON BAR
- DENOTES STANDARD IRON BAR
- DENOTES IRON EAGLE
- DENOTES PROPERTY IDENTIFIER NUMBER
- DENOTES SPECIFIED CONTROL MONUMENT

ALL FOUND MONUMENTS BY RADY-PENTEK & EDWARD SURVEYING LTD., O.L.S.

BEARING NOTE

BEARINGS ARE GRID, UTM ZONE 17, NAD83 (ORIGINAL), DERIVED FROM
SOP 0479900017 NORTH 436036.960 EAST 983262.220
SOP 0079900004 NORTH 435000.000 EAST 983977.255
COORDINATES ARE UTM ZONE 17, NAD83 (ORIGINAL), TO URBAN ACCURACY PER
SEC 14 (2) OF OREG. 216/10, AND CANNOT BE USED TO
RE-ESTABLISH CORNERS OR BOUNDARIES SHOWN ON THIS PLAN.
DISTANCES ARE GROUND AND CAN BE CONVERTED TO GRID BY MULTIPLYING BY
THE COMBINED SCALE FACTOR OF 0.999976.

rpe RADY-PENTEK & EDWARD SURVEYING LTD.
ONTARIO LAND SURVEYORS
643 Christie Road, Suite 7
Woodbridge, Ontario L4L 8A3
Tel (416) 635-5000 Fax (416) 635-5001
Tel (905) 264-0881 Fax (905) 264-2099
Website: www.rpe.ca
DRAWN: L.R. CHECKED: C.J.E.
JOB No. 12-070 CAD FILE No. 02704016

Jul 17, 2013 - 14:43:48