

# A New Kind of Medical School

---

Ryerson  
University



# Context

The current structure of Ontario's healthcare system is not sustainable long-term. With Brampton disproportionately underserved in health care, **the transformation of the system will need a new kind of doctor.**

## Key challenges:

- Acute care is not enough to address the multiplicity of needs.
- Chronic disease such as diabetes, and complex needs stretch an overloaded system.
- The lack of access for some communities creates a greater need for attention to equity.
- The lack of innovation and technology in healthcare that identifies issues earlier and address patient needs.



# Our Vision

The Brampton School of Medicine will lend itself to community-centered care, while training a diverse network of professionals.

## Why Ryerson:

- We are known for innovation in curriculum, and professional practice.
- We attract talent from diverse backgrounds.
- We focus on culturally respectful approaches.
- We established our commitment to meeting local needs, and embedding it in professional practice.
- We look at problems differently and challenge the status quo.



# Our Vision (continued)

Our doctors will rise to meet today's needs through a curriculum that:

- focuses on community-centric primary care and the social determinants of health and well-being
- provides more culturally competent care
- leverages innovation and technology to improve quality of care, and patient outcomes
- provides future physicians with the skills to develop interdisciplinary networks of healthcare to achieve better outcomes for patients in their communities, and
- focuses on issues of aging, as our seniors population increases.



# Why Brampton

The new school will:

- enhance the Brampton healthcare system, and
- create space for a diverse pool of talent to thrive in healthcare and healthcare related sectors.

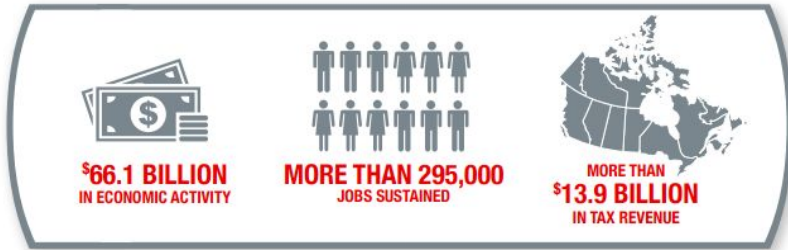
**Our community-focused approach will expand the reach of primary care in the City and Peel Region.**



# Economic Impact

A recent study by the Association of Canadian Faculties of Medicine indicates that Canadian Medical Schools generate 3.5% of Canadian GDP.

**AFMC** TOTAL IMPACT OF CANADA'S FACULTIES OF MEDICINE AND AFFILIATED TEACHING HOSPITALS, FY 12/13



The Northern Ontario School of Medicine in Thunder Bay and Sudbury reported almost \$90 million in direct economic impact for its local community.



# Case Study

## Rowan University - Camden Rising Initiative

- Attracted over \$2 billion in investment from over 20 corporations.
- Improved the health care provision in the Camden area.
- Created new well-paying jobs, reducing unemployment.
- Funded City investments in schools, infrastructure and transportation.

Following Rowan's examples, our vision is to create a Health Innovation District in Downtown Brampton.



# What's Next?

## Our Founding Pillars:

- provide culturally competent care and,
- focus on community-centric primary care and the social factors that determine health.

## How do we achieve that?

Last fall we began engaging in community organizations, health care businesses, clinicians and clinical groups.

- Our new Director of Community Engagement, Nauman Khan, will lead discussions with community groups to gain feedback in the planning.
- Collaborate with council offices to set up community and stakeholder consultations to ensure your constituents are involved in our process.

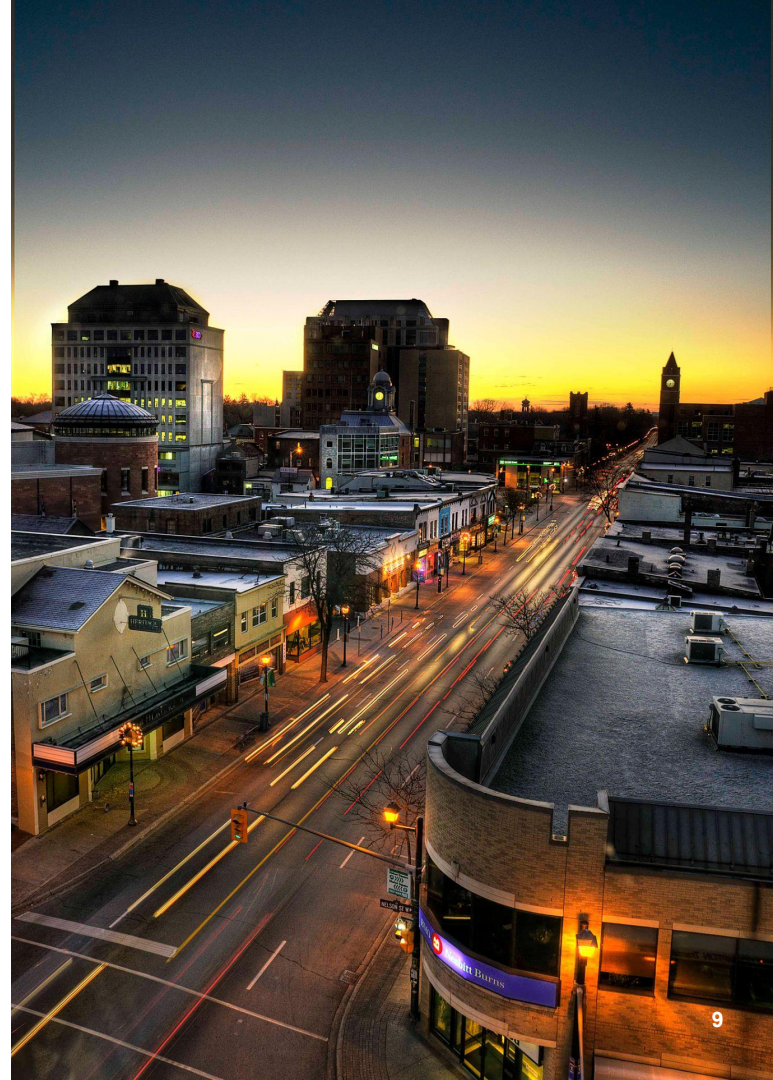




# Our Ask

We ask that you match the provincial government's funding of \$1 million as we continue to carry out our planning of the medical school.

**We want this medical school to be developed not just for your community but with your community.**



# Thank you

CITY OF BRAMPTON  
West Tower  
41 George Street South

Ryerson  
University