

Chris Gibson Recreation Centre

Accessibility Meeting

June 1, 2021

Agenda

1. Exterior Paths of Travel

- a) Sidewalks and curbs
- b) Street Furniture
- c) Parking and Drop off

2. Access and Circulation

- a) Entrances
- b) Stairs and Elevator

3. Washroom Facilities

4. Other Amenities

- a) Viewing Positions
- b) Dressing Rooms
- c) Offices
- d) Counters






5. Systems and Controls

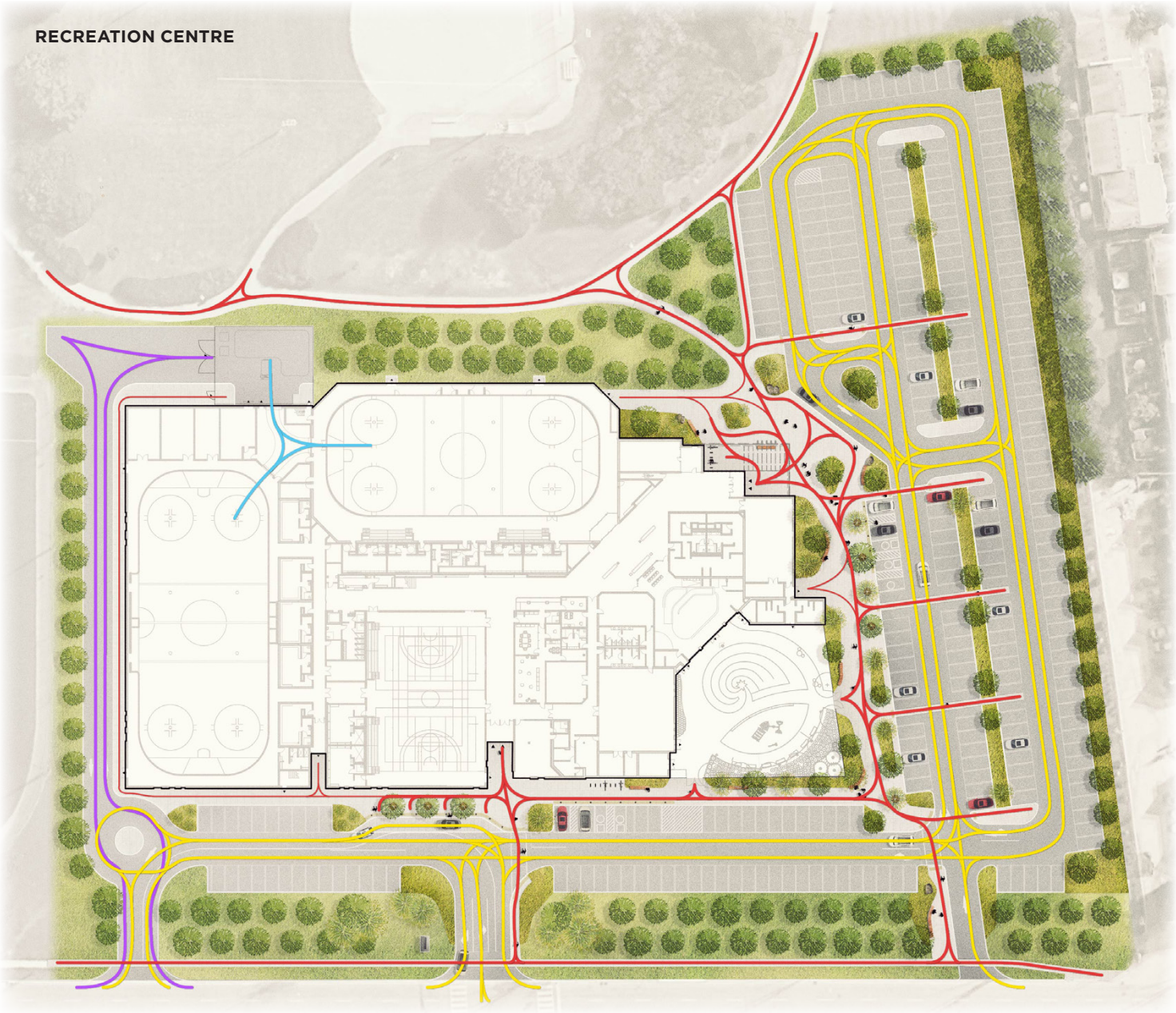
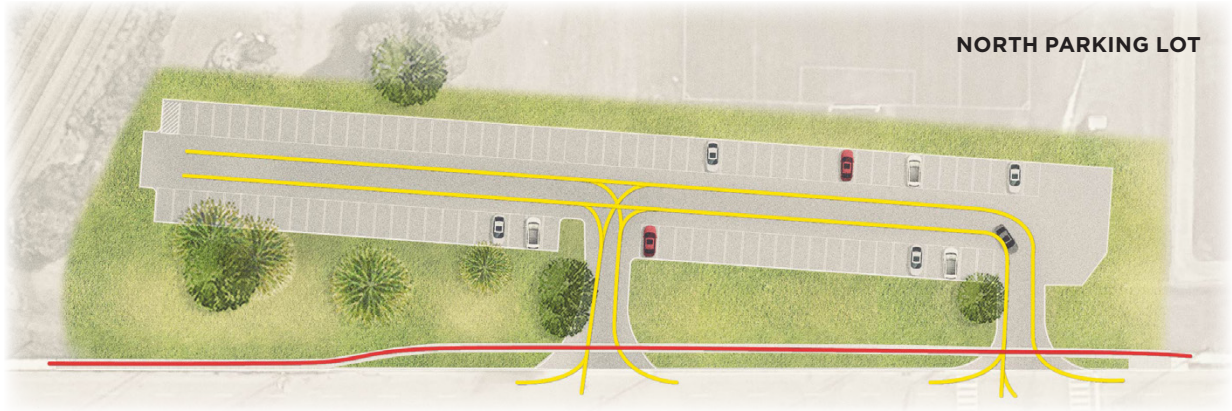
- a) Exits
- b) Materials

1. Exterior Paths of Travel

Site Circulation

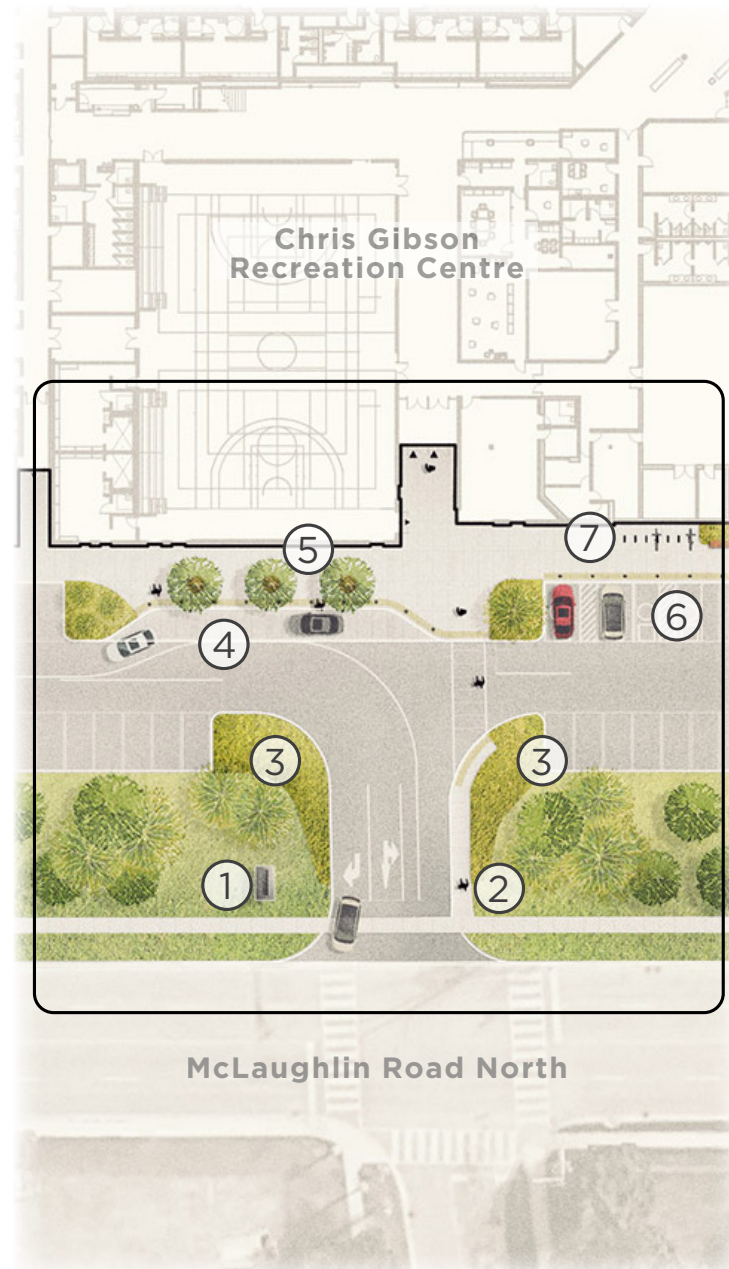
Recreation Centre & North Parking Lot

-  Pedestrian Circulation - Major
-  Pedestrian Circulation - Minor
-  Vehicular Circulation
-  Waste Service Vehicles
-  Ice Resurfacing Vehicle





1. Ceremonial Entrance



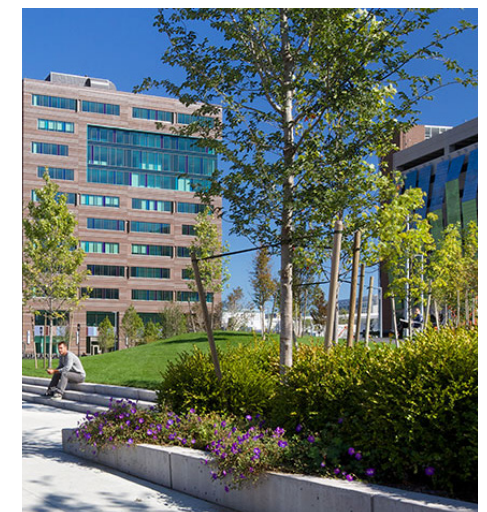
Spatial Characteristics

1. Existing CGRC signage to remain
2. Pedestrian sidewalk for direct access from McLaughlin to ceremonial entrance
3. Perennial, shrub, ornamental grass and groundcover planting to highlight drive aisle and pedestrian sidewalk access
4. Flush curb and concrete lay-by for ease of drop-off and pick-up to recreation centre entrance
5. Tree planting in metal grates frame lay-by entrance
6. Flush curb condition between accessible parking and walkway to facilitate ease of access
7. Bicycle parking easily accessible near entrance

Precedent Imagery



Planting Imagery

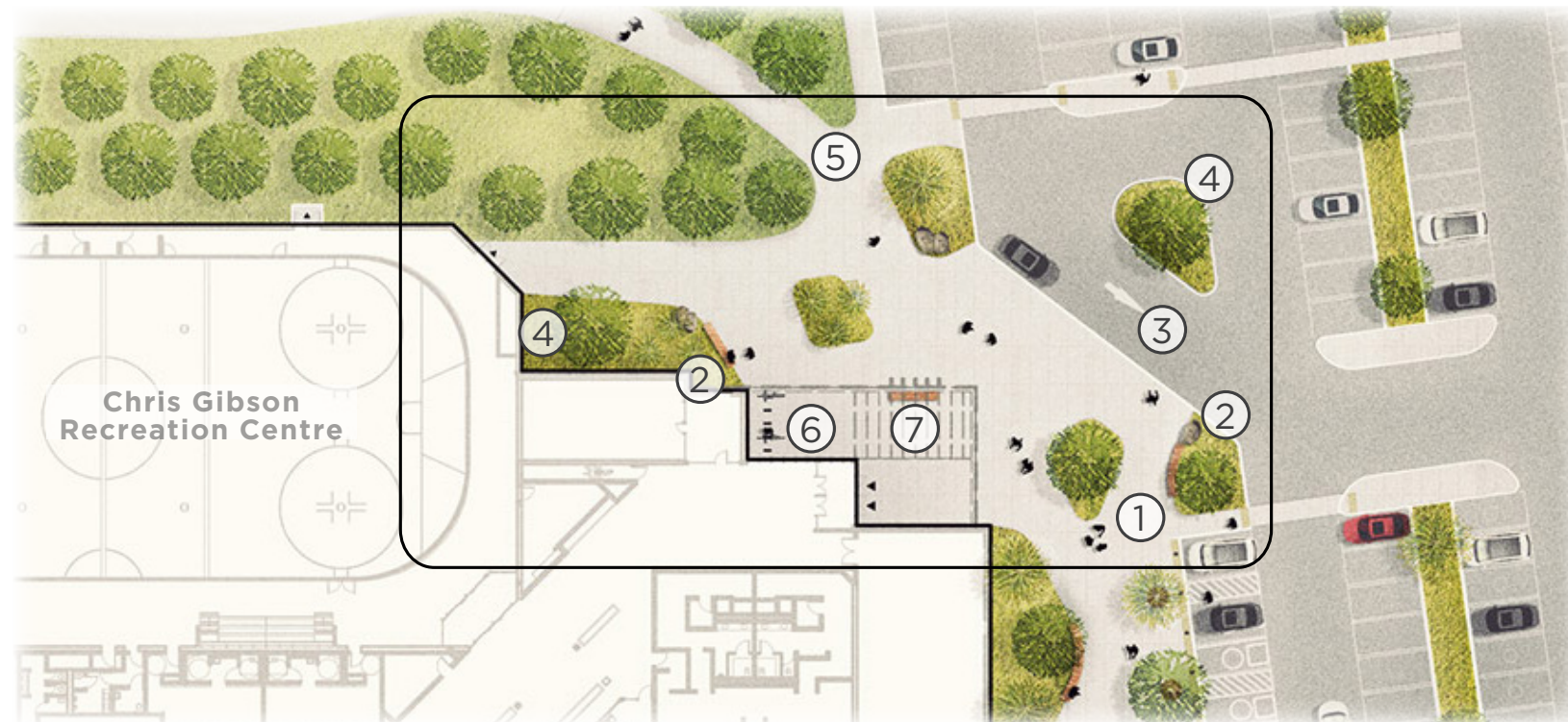




2. East Forecourt Plaza

Spatial Characteristics

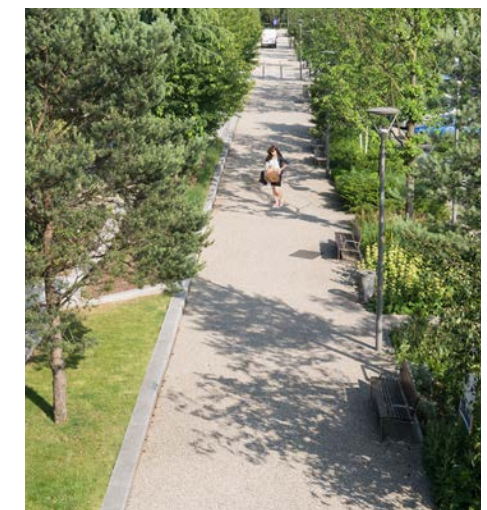
1. Design of pathways to create a continuous and direct experience between Chris Gibson Park and the entry forecourt
2. Integrated wooden bench seating located at edge of forecourt planting islands
3. Widened road to facilitate ease of pedestrian drop-off and pick-up
4. Planting palette alludes to natural Chris Gibson Natural Areas areas adjacent
5. Improved connection to Chris Gibson Natural Areas east of the Recreation Centre
6. Covered bicycle parking located near entrance
7. Seating in partial shade beneath architectural canopy



Precedent Imagery



Planting Imagery





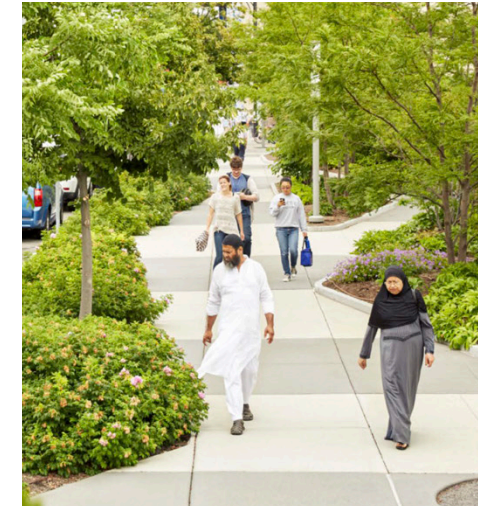
3. Pedestrian Promenade



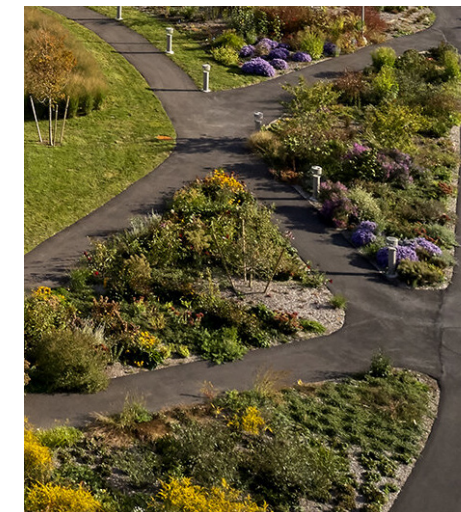
Spatial Characteristics

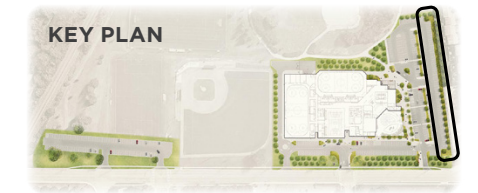
1. Dedicated pedestrian connection to McLaughlin Road North adjacent to new right-in drive aisle
2. Continuous and equidistant tree planting creates a corridor that directs pedestrians to East Forecourt Entrance
3. Integrated wooden bench seating located at edge of planting islands, which extend the splash pad planting buffer and add further seasonal interest
4. Surface paving change safely draws pedestrians from parking lot to Pedestrian Promenade
5. Flush curb condition and permeable tree planting in grates facilitates ease of access from accessible parking
6. Planting palette alludes to natural Chris Gibson Natural Areas areas adjacent

Precedent Imagery



Planting Imagery





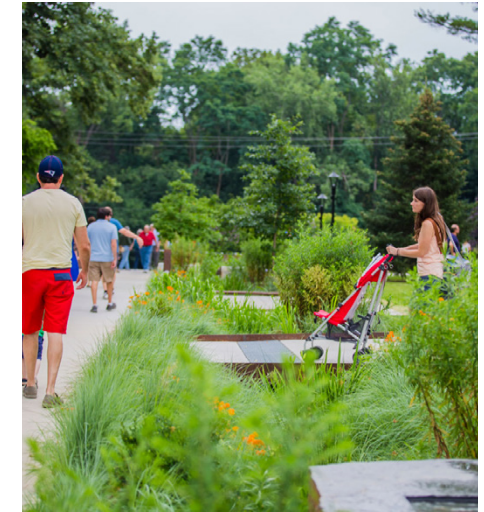
5. Enhanced Infiltration Swale

Spatial Characteristics

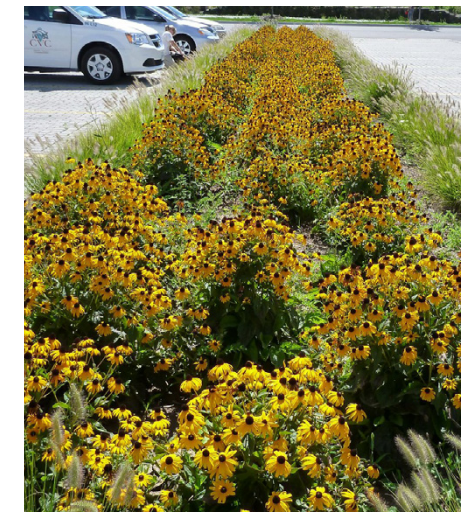
1. Paving change safely draws pedestrians from parking lot to Pedestrian Promenade via Pedestrian Crossings
2. Enhanced Infiltration Swale through parking island, including trees and native planting, promotes biodiversity, adds visual interest, reduces heat-island effect and filters water on site
3. Riverstone strip at parking island curb edge deters plant damage caused by vehicles and salt



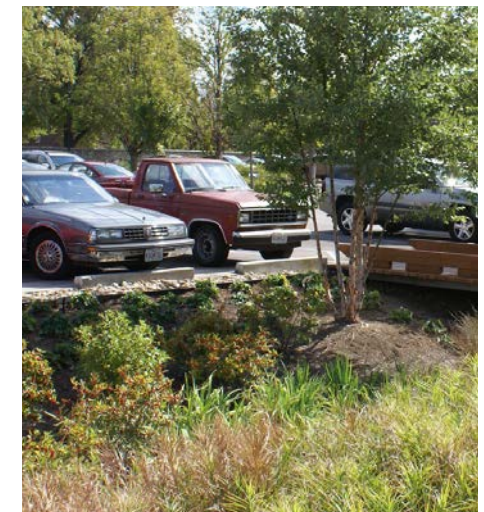
Precedent Imagery



Planting Imagery



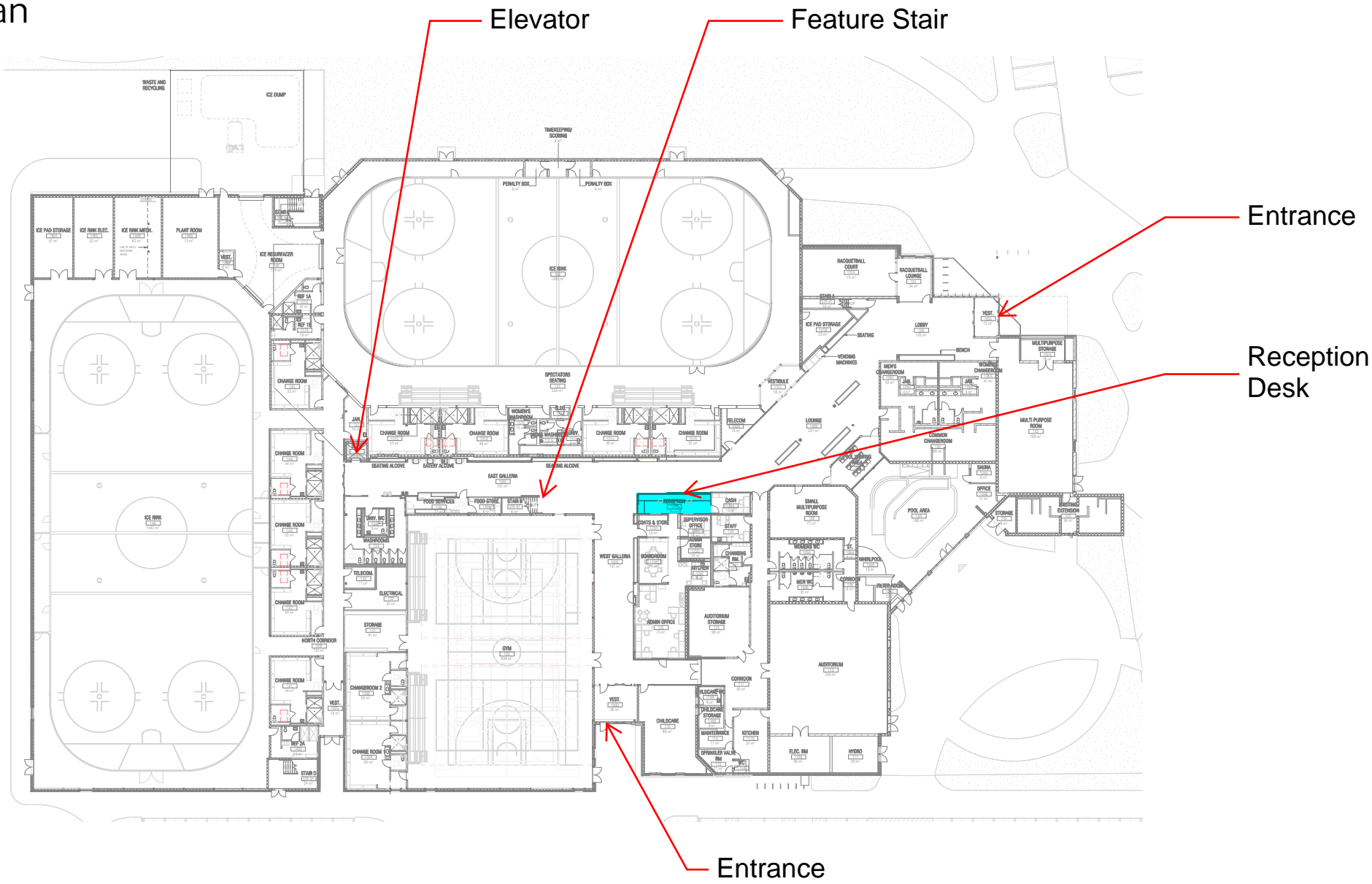
Black-eyed Susan & Foxtail Grass retention swale, Credit Valley Conservation Area by PMA



Native rain garden planting at Missouri Botanical Garden by Pashek MTR

2. Access and Circulation

Level 1 Floor Plan





Ceremonial Entrance

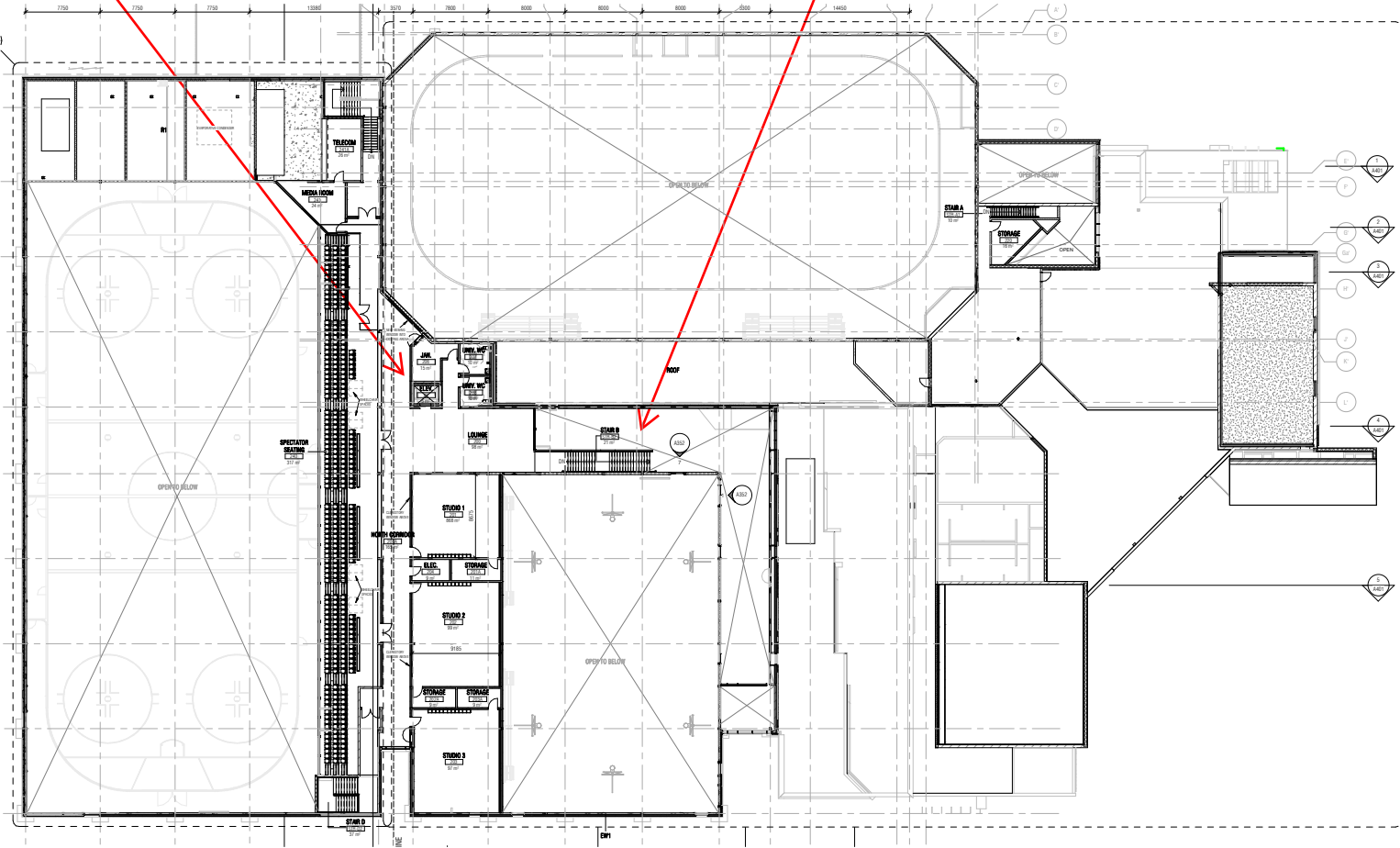


Southeast Entrance

Level 2 Floor Plan

Elevator

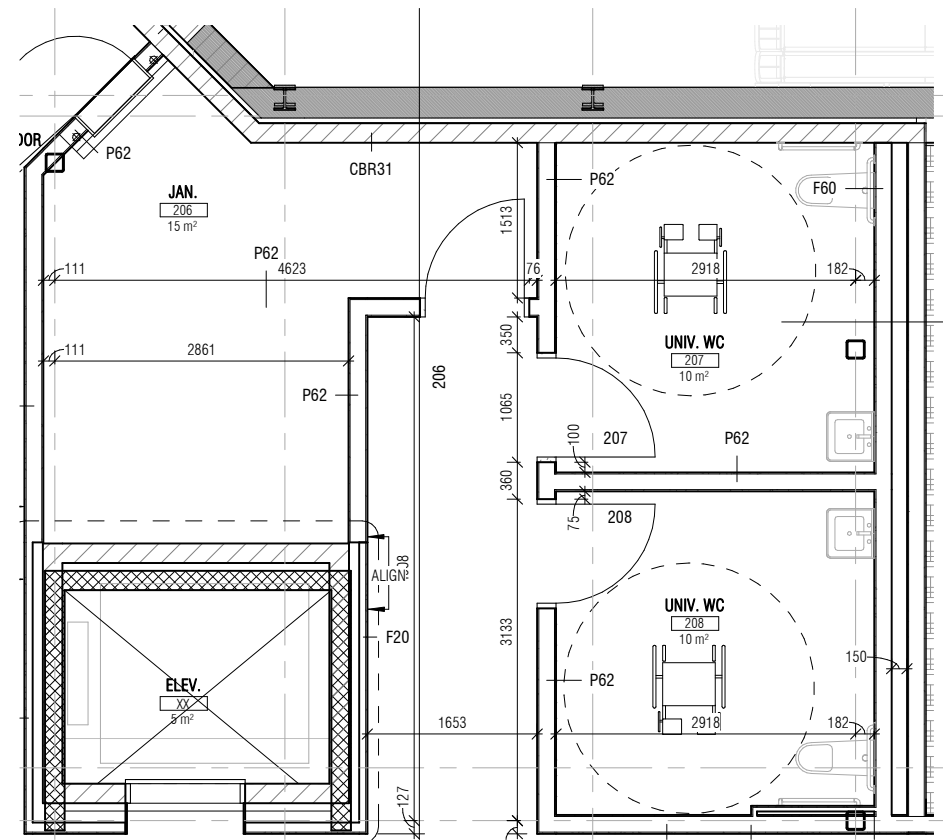
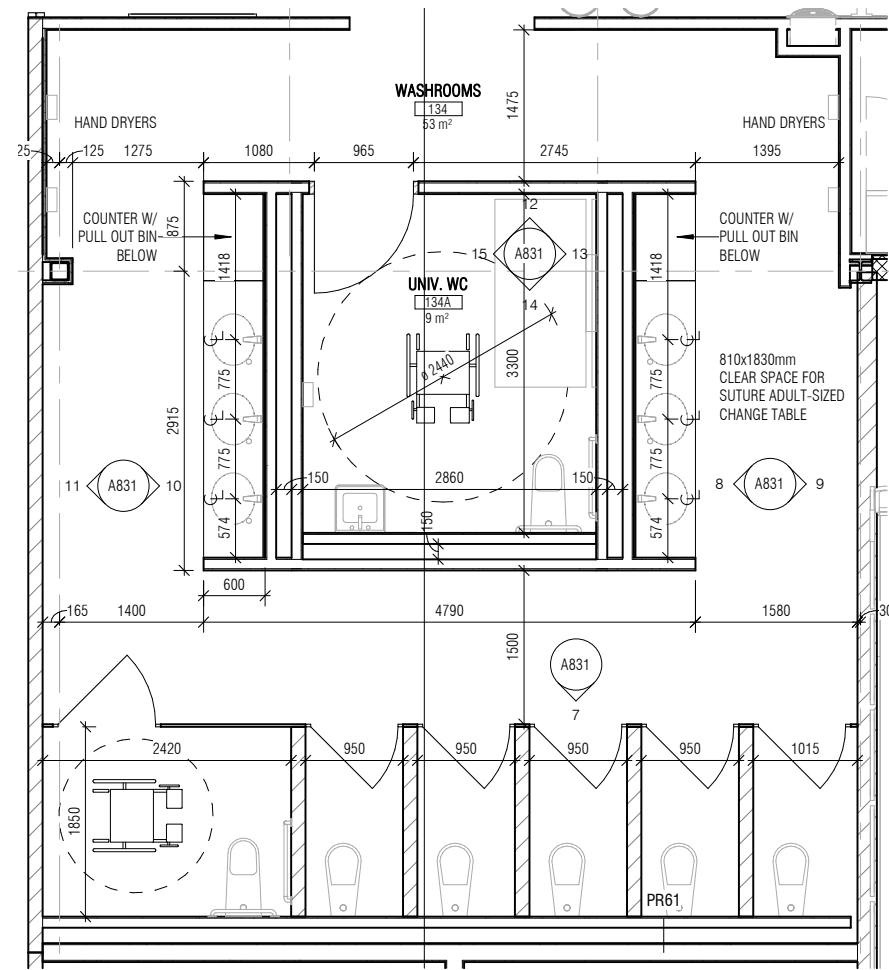
Feature
Stair





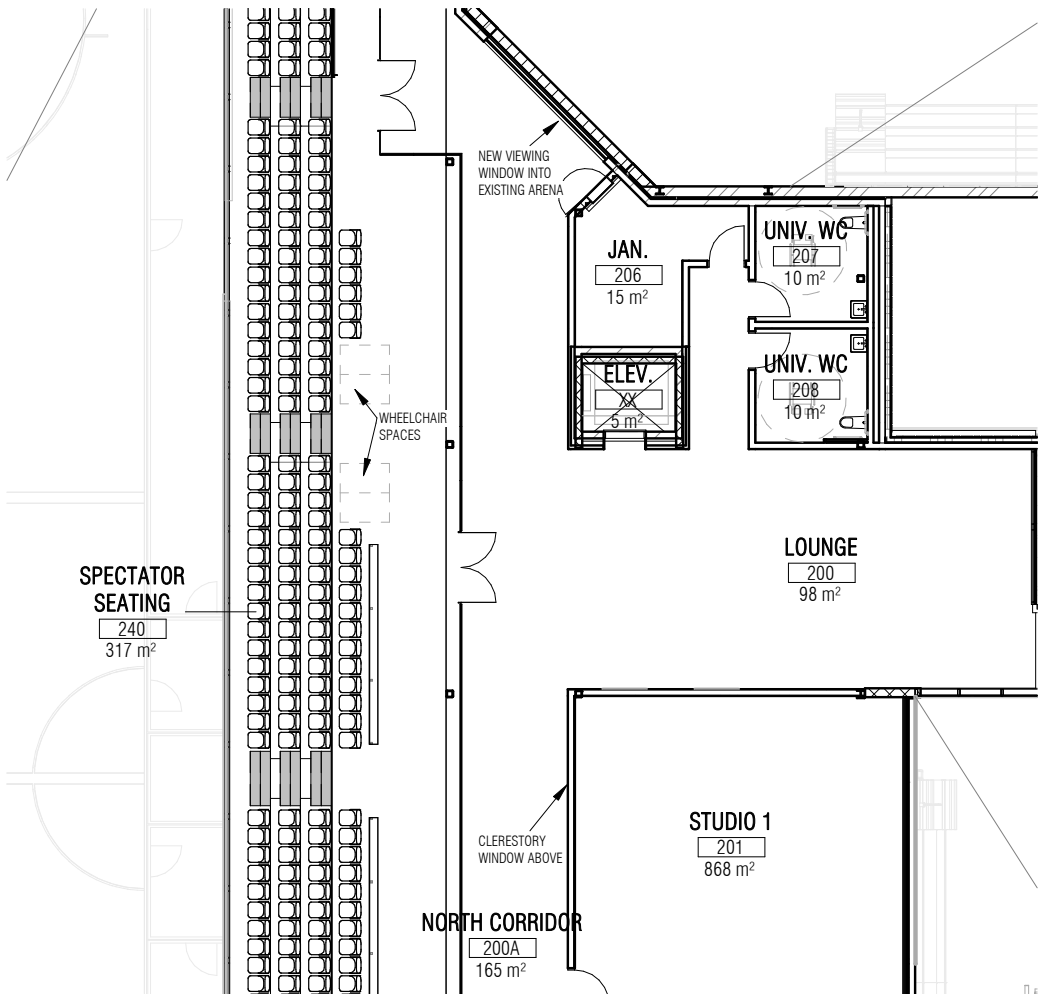
3. Washroom Facilities

Gender Neutral Washroom and Universal Washrooms

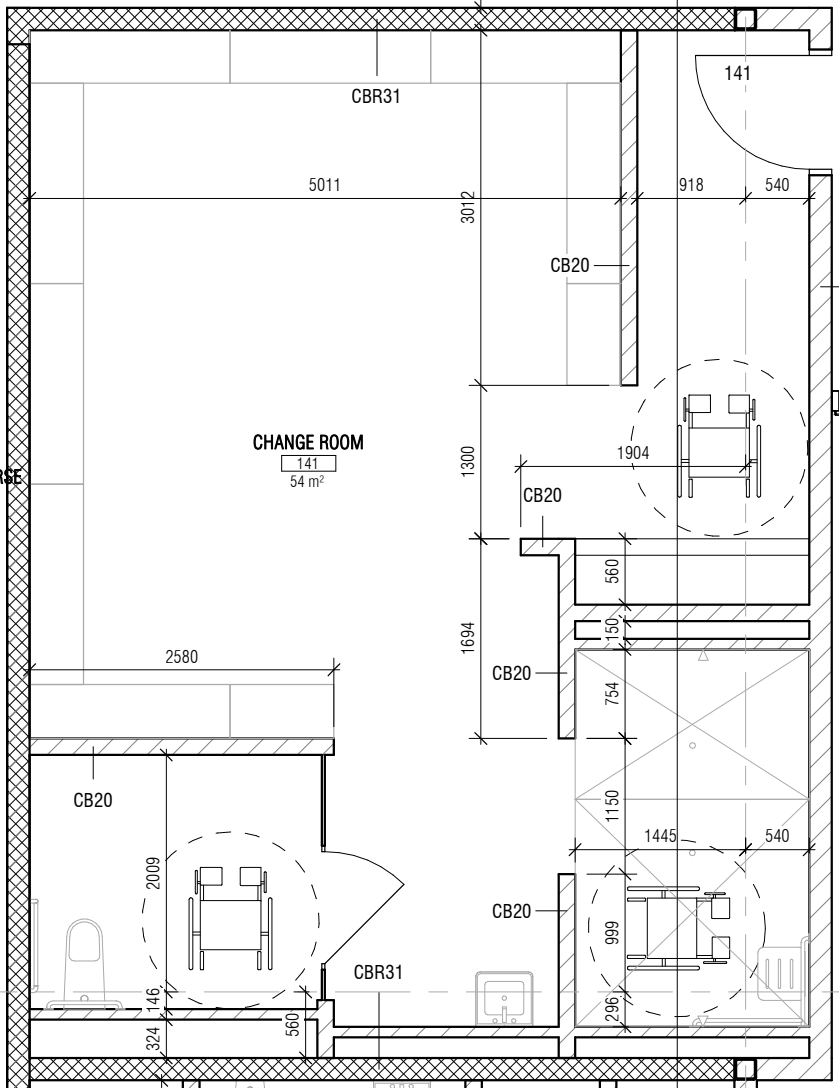
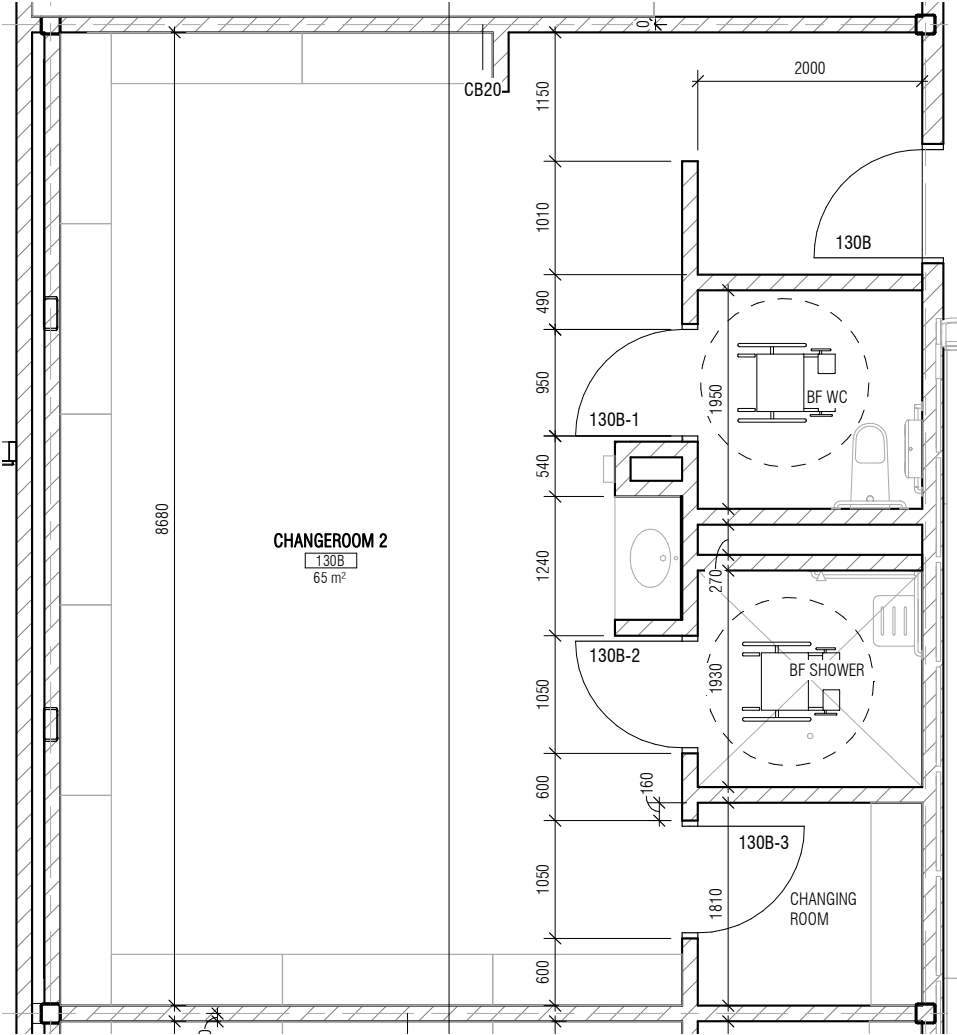


4. Other Amenities

Spectator Seating



Changerooms



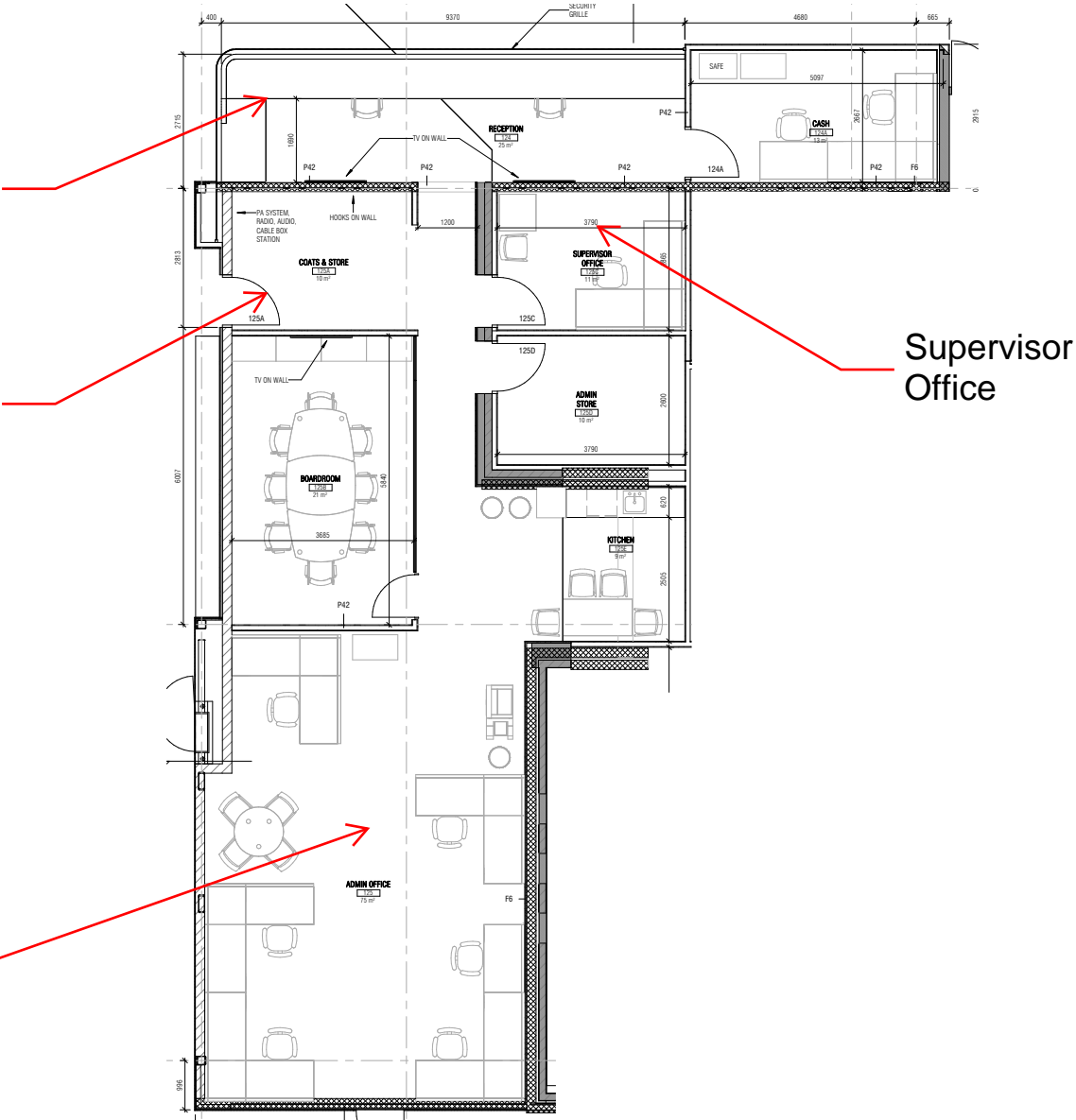


Administration

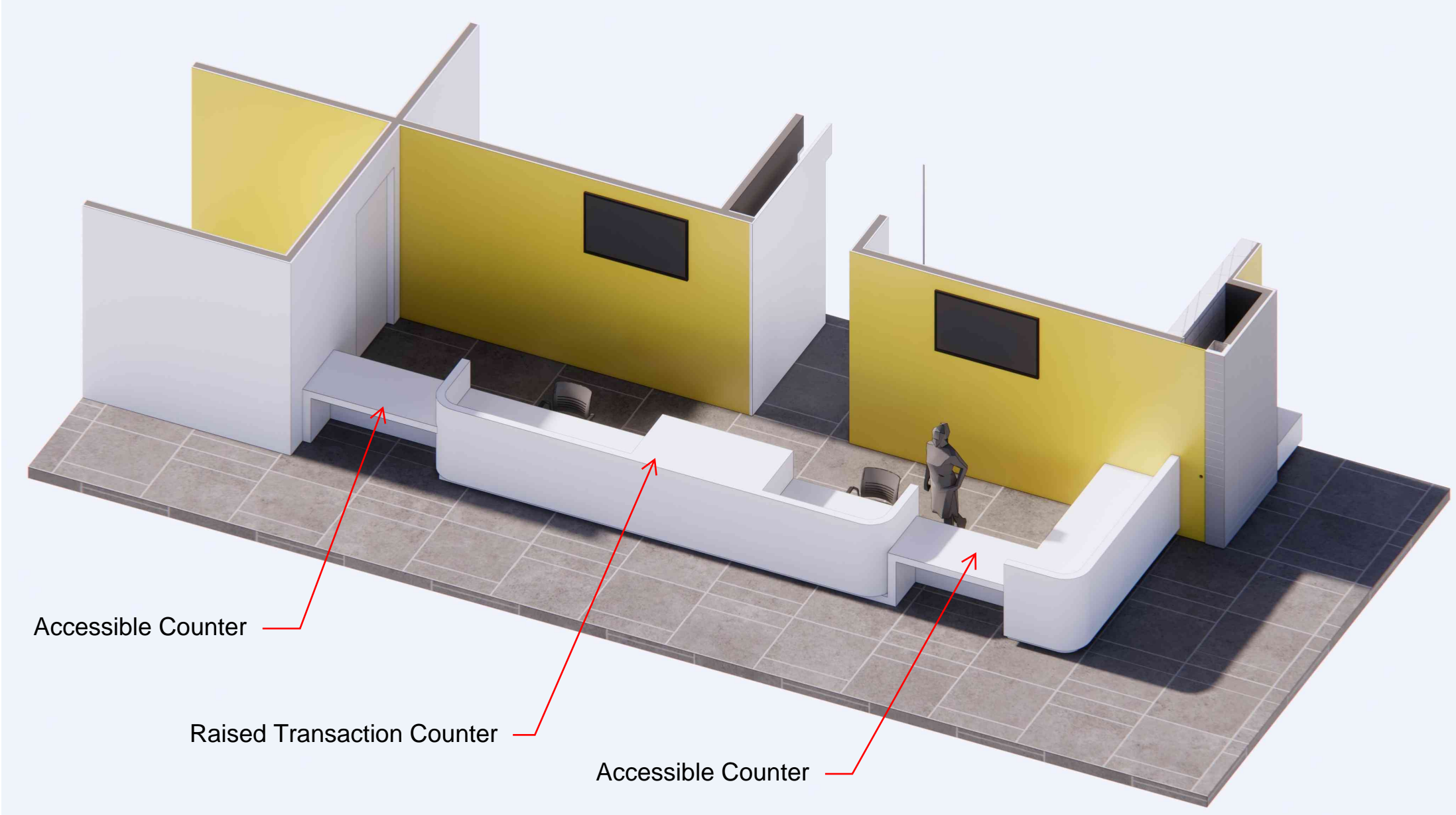
Reception Desk

Secured entrance

Office Space

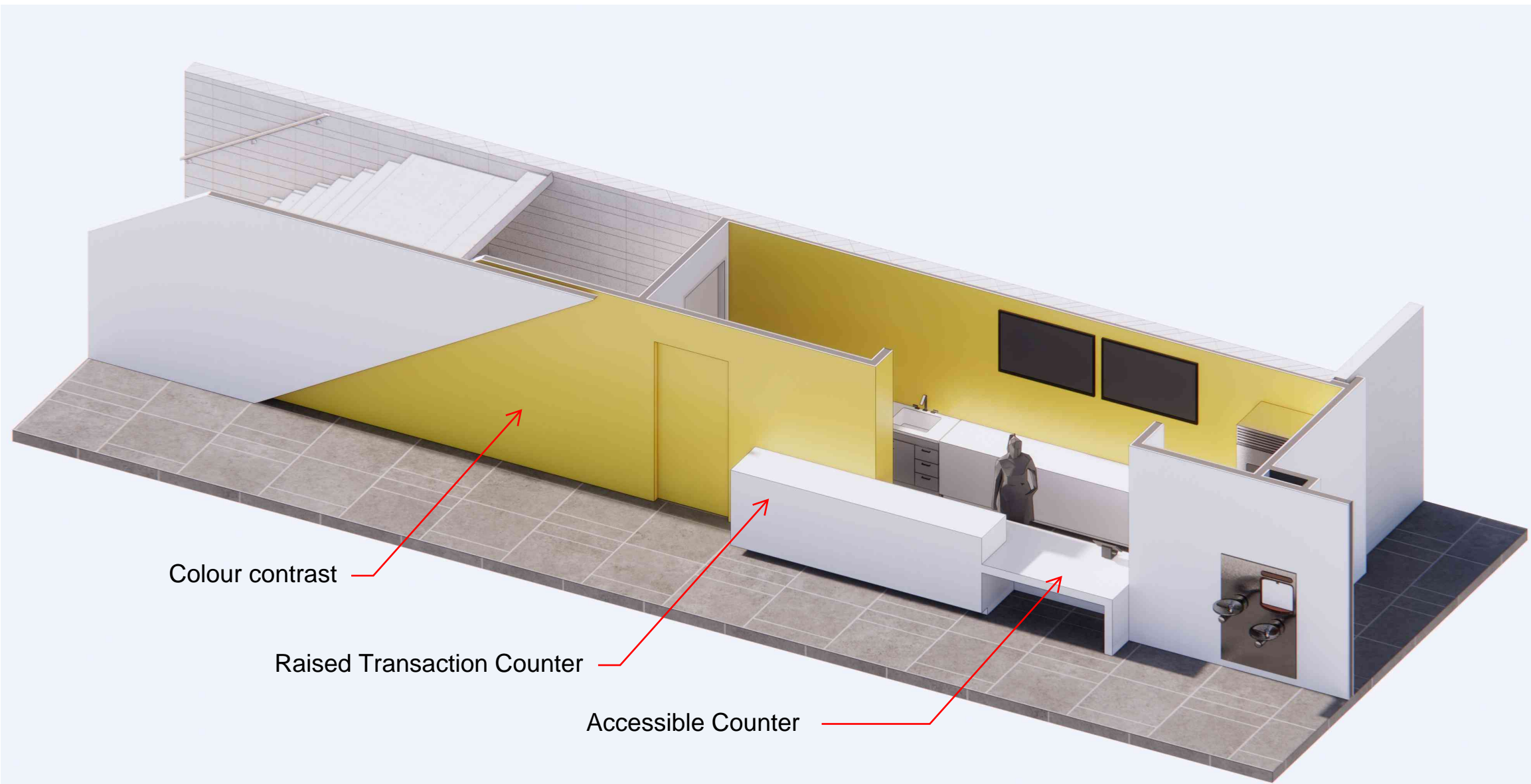


Reception Desk



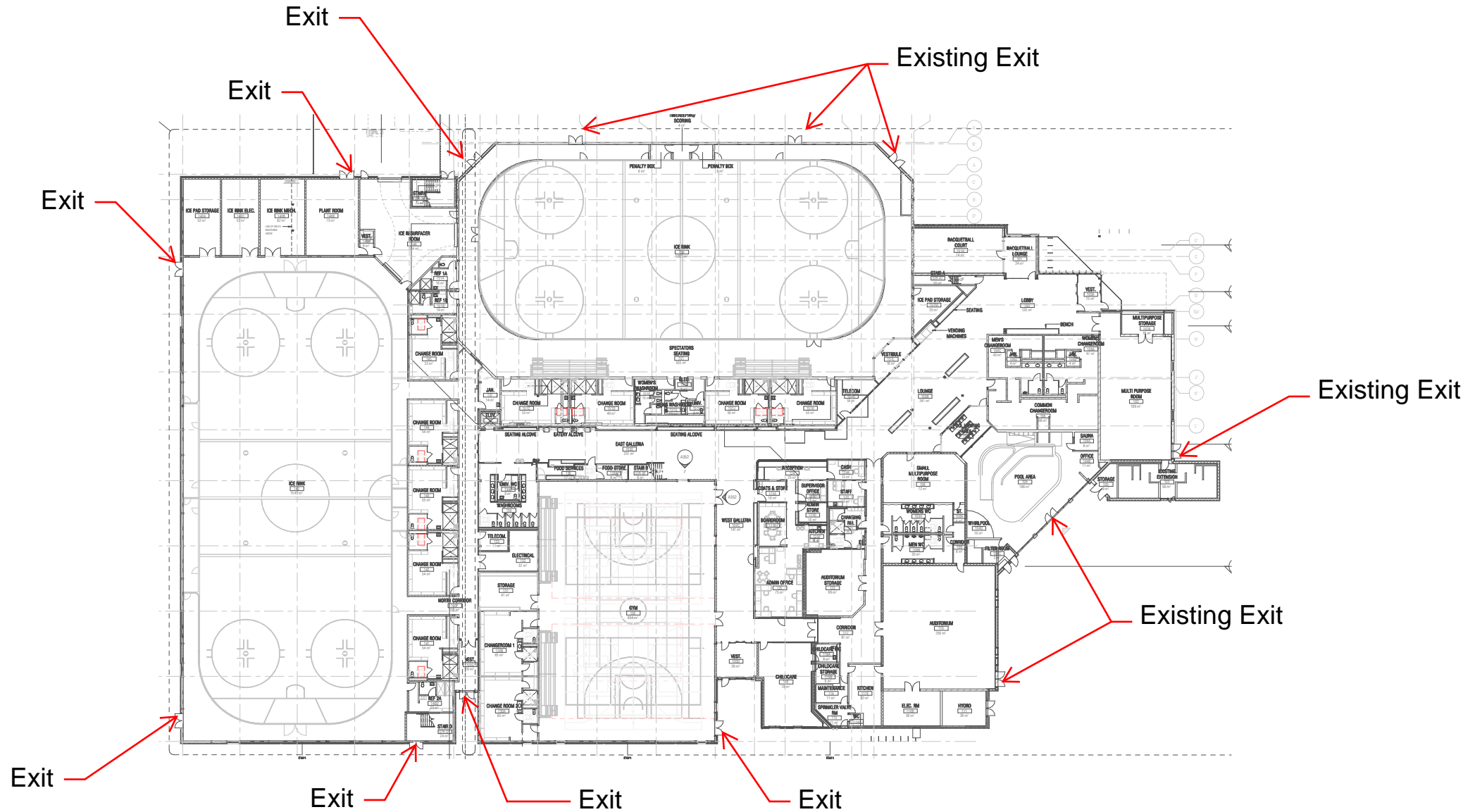


Food Services



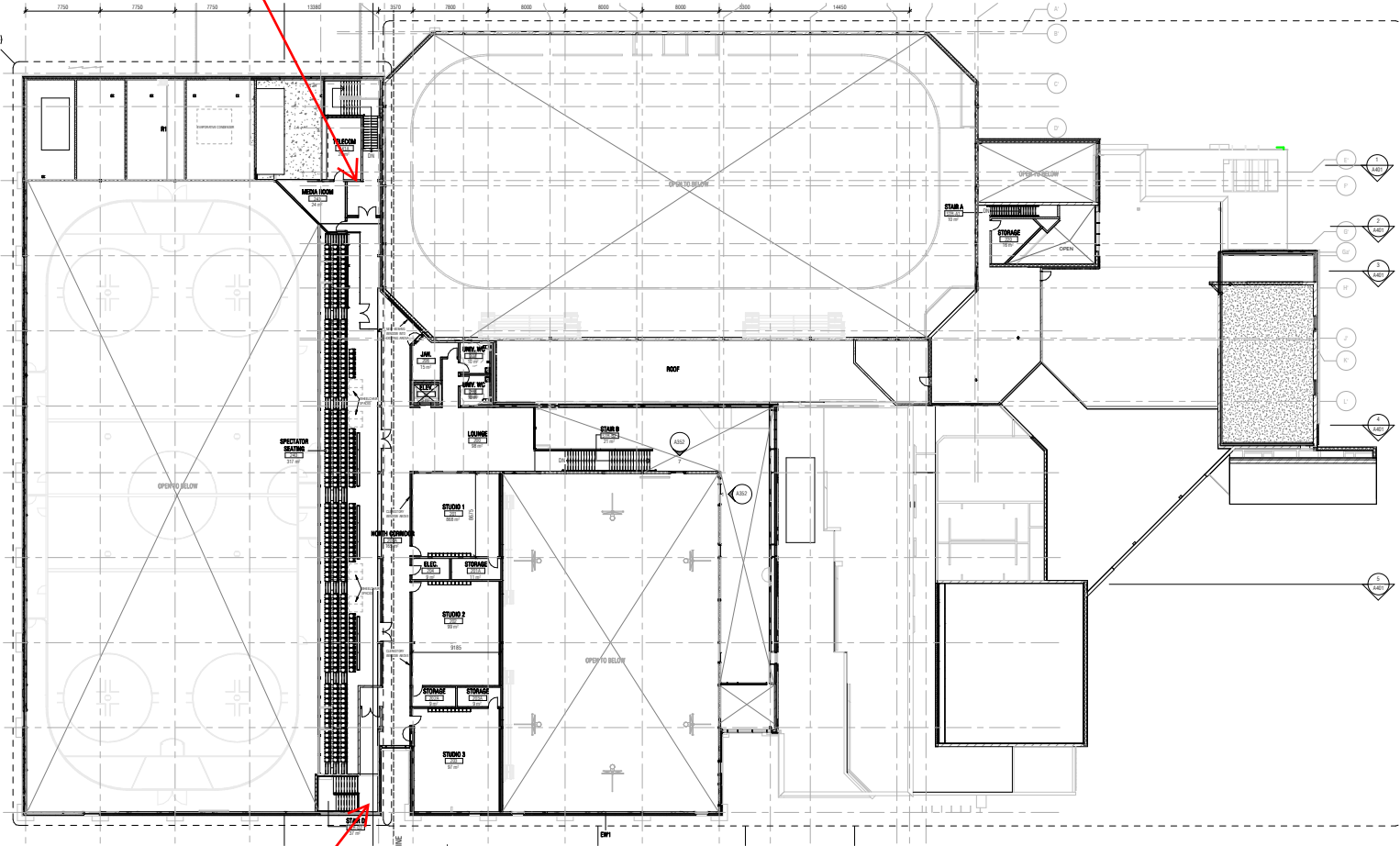
5. Systems and Controls

Level 1 Floor Plan



Level 2 Floor Plan

Exit with area of refuge



Exit with area of refuge



Gymnasium



Southeast Entrance