

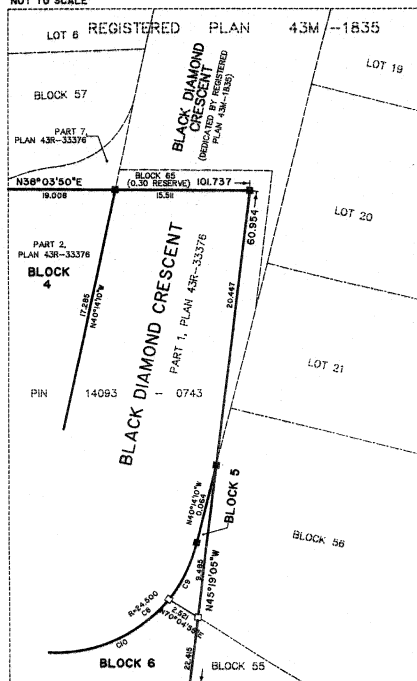
METRIC: DISTANCES SHOWN ON THIS PLAN ARE IN METRES AND CAN BE CONVERTED TO FEET BY DIVIDING BY 0.3048.

CURVE TABLE

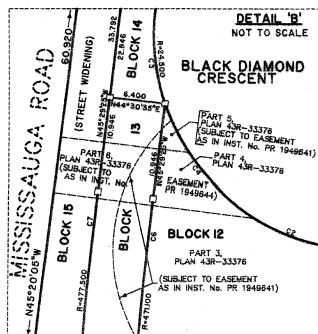
NUM	ARC	RADIUS	BEARING	CHORD
C1	12.633	7.500	N86°17'40"E	11.85
C2	41.254	24.500	N86°17'40"E	36.537
C3	10.935	24.500	N56°16'35"W	10.844
C4	24.686	24.500	N79°50'15"E	23.850
C5	5.445	24.500	N44°24'35"E	5.402
C6	21.974	47.100	N46°49'35"W	21.972
C7	22.272	477.500	N46°49'35"W	22.270
C8	38.488	24.500	N70°44'40"W	30.841
C9	8.660	24.500	N50°04'40"W	8.642
C10	12.392	24.500	N57°25'45"W	12.260
C11	12.409	24.500	N23°34'15"E	12.276
C12	10.252	7.500	N70°44'40"W	9.472

BLOCK	AREA (m²)
1	395.8
2	279.3
3	279.4
4	373.7
5	8.5
6	122.2
7	389.2
8	251.7
9	251.7
10	251.7
11	252.8
12	539.8
13	240.8
14	100.5
15	314.7

DETAIL 'A'  
NOT TO SCALE



DETAIL 'B'  
NOT TO SCALE



SCP 042900018

PLAN OF SUBDIVISION OF  
PART OF LOT 7, CONCESSION 4,  
WEST OF HURONTARIO STREET  
(GEOGRAPHIC TOWNSHIP OF CHINGUACOUS, COUNTY OF PEEI)  
CITY OF BRAMPTON  
REGIONAL MUNICIPALITY OF PEEI  
SCALE 1:1000

SCHAEFFER DZALDOV BENNETT LTD.

ATTACHMENT 2

PLAN 43M-1872

I CERTIFY THAT THIS PLAN IS REGISTERED IN THE LAND REGISTRY OFFICE FOR THE LAND TITLES DIVISION OF PEEI No. 43 AT 10:32 O'CLOCK ON THE 24 DAY OF February 2010 AND ENTERED IN THE PARCEL REGISTER FOR PROPERTY IDENTIFIER NO. 14093-0743 AND THE REQUIRED CONSENTS ARE REGISTERED AS PLAN DOCUMENT NO. 1835583

KATHY CANNON-BENNETT  
Representative For Land Registrar

THIS PLAN COMPRISES ALL OF PIN 14093-0743.

SUBJECT TO EASEMENT OVER PART 1, PLAN 43R-33376 AS SET OUT IN INST. No. 1949652 AND PR 2019385 (AFFECTS ALL OF BLACK DIAMOND CRESCENT).

SUBJECT TO EASEMENT OVER PARTS 2, 3, 4 AND 5, PLAN 43R-33376 AS SET OUT IN INST. No. PR 1949641 (AFFECTS PART OF BLOCKS 3, 4, 10, 11, 12 AND 13).

SUBJECT TO EASEMENT OVER PARTS 4 AND 6, PLAN 43R-33376 AS SET OUT IN INST. No. PR 1949644 (AFFECTS PART OF BLOCKS 12 AND 13, AND PART OF BLOCK 15 (STREET WIDENING)).

NOTES

- DENOTES IRON BAR PLANTED
- FOUND MONUMENT
- SIB STANDARD IRON BAR
- SSIB SHORT STANDARD IRON BAR
- IB IRON BAR
- 922 SCHAEFFER DZALDOV BENNETT LTD.
- 868 D.P. MUELAN, O.L.S.
- P PLAN 43R-32781
- PI PLAN 43R-33000
- M MEASURED
- W.M.S. WEST OF HURONTARIO STREET

ALL FOUND MONUMENTS ARE SIB'S UNLESS NOTED OTHERWISE.  
ALL FOUND MONUMENTS ARE NUMBERED 922 UNLESS NOTED OTHERWISE.  
0.30 RESERVES ARE EXAGGERATED FOR CLARITY.

BEARINGS ARE UTM GRID, DERIVED FROM SPECIFIED CONTROL POINTS 042900018 AND 042900023, UTM ZONE 17, NAD83 (ORIGINAL).

DISTANCES ARE GROUND AND CAN BE CONVERTED TO GRID BY MULTIPLYING BY A COMBINED SCALE FACTOR OF 0.999674

SPECIFIED CONTROL POINTS (SCP's): UTM ZONE 17, NAD83 (ORIGINAL) COORDINATES TO URBAN ACCURACY PER SEC. 14(2) OF OREG. 216/10		
POINT ID.	NORTHING	EASTING
SCP 042900018	4834719.368	555188.242
SCP 042900023	4834361.093	597300.713
COORDINATES CANNOT, IN THEMSELVES, BE USED TO RE-ESTABLISH CORNERS OR BOUNDARIES SHOWN ON THIS PLAN		

TOTAL AREA OF SUBDIVISION = 0.6157 ha.

SURVEYOR'S CERTIFICATE

I CERTIFY THAT:

- THIS SURVEY AND PLAN ARE CORRECT AND IN ACCORDANCE WITH THE SURVEYS ACT, THE SURVEYORS ACT, THE LAND TITLES ACT AND THE REGULATIONS MADE UNDER THEM.
- THE SURVEY WAS COMPLETED ON THE 29th DAY OF SEPTEMBER, 2010.

DATE FEBRUARY 25, 2010

W.M. Fenton  
Ontario Land Surveyor

OWNER'S CERTIFICATE

THIS IS TO CERTIFY THAT:

- BLOCKS 1 TO 14, BOTH INCLUSIVE, STREET, NAMELY BLACK DIAMOND CRESCENT, AND THE STREET WIDENING, BLOCK 15 HAVE BEEN LAID OUT IN ACCORDANCE WITH OUR INSTRUCTIONS.
- THE STREET IS HEREBY DEDICATED TO THE CORPORATION OF THE CITY OF BRAMPTON AS A PUBLIC HIGHWAY.
- THE STREET WIDENING, NAMELY BLOCK 15 IS HEREBY DEDICATED TO THE REGIONAL MUNICIPALITY OF PEEI AS A PUBLIC HIGHWAY.

DATED THE 29th DAY OF FEBRUARY, 2010  
DESTONA HOMES (2003) INC.

DOUG SKEFFINGTON - A.S.O.  
I HAVE THE AUTHORITY TO BIND THE CORPORATION

MUNICIPAL APPROVAL  
217-080018  
APPROVED UNDER SECTION 51 OF THE  
PLANNING ACT, R.S.O. 1990 THIS 13 DAY  
OF February 2010  
COMMISSIONER PLANNING DESIGN AND  
DEVELOPMENT DEPARTMENT OF THE  
CITY OF BRAMPTON

SCHAEFFER DZALDOV BENNETT LTD.  
ONTARIO LAND SURVEYORS  
64 JARDIN DRIVE CONCORD, ONTARIO L4K 3P3 TEL: (416) 987-0101  
CALC. SL. DRAWN ACAD/LW CHECKED WMF SCALE 1:1000 JOB NO. 06-534-00