

Centre for Healthy Communities



Presentation to Committee of Council,
September 8, 2021

Sheridan's Brampton Campus is home to leading healthcare education

- 11,000 learners
- 64 programs including Kinesiology and Health Promotion, Athletic Therapy, Personal Support Worker, Practical Nursing, and Pharmacy Technician.
- Research on diagnosing chronic pain and accelerating mobile health innovation.
- Contract research partnership with BioSteel Sports Nutrition Inc.
- Athletic Therapy graduates who have held leading roles with the Toronto Raptors, Toronto Maple Leafs, Vancouver Canucks, the National Ballet of Canada, and Cirque Du Soleil.



Brampton is facing a healthcare emergency

- 62% of Peel residents are obese or overweight.¹
- 58% of Brampton residents are not physically active.²
- 48% of Peel residents report having at least one diagnosed chronic health disease.³
- 73% of Brampton's population report being a visible minority⁴ and a lack of access to culturally and racially competent care fosters health inequity.
- 15-20% of South Asians will develop type 2 diabetes mellitus, putting them at elevated risk compared to other populations.⁵
- Less than 1% of the provincial healthcare budget is spent on health promotion.⁶
- Ontario will be short 37,000 nurses and personal support workers for long-term care alone by 2024.⁷
- Ontario's surgery backlog will reach 419,000 elective and 2.5M diagnostic procedures by October 1, 2021.⁸



Sheridan can address Brampton's needs, but we need more space to grow

- ~2700 students in health-related programs with another 770 to come in new programs under development, including:
 - Bachelor of Nursing
 - Bachelor of Osteopathy
 - Graduate certificate in Clinical Research
 - Graduate certificate in Regulatory Affairs
 - Graduate certificate in Clinical Kinesiology
- Sheridan students contribute 375,000 hours of service in 1,500 healthcare field placements each year.



As the first step toward realizing Sheridan's bold Campus Master Plan on the Davis Campus, we are excited to propose the Centre for Healthy Communities.



Anticipated to be
150,000 sq. m.
with an estimated budget of
\$150M, the Centre for Healthy
Communities will turn
Sheridan's Campus Master
Plan vision into reality.

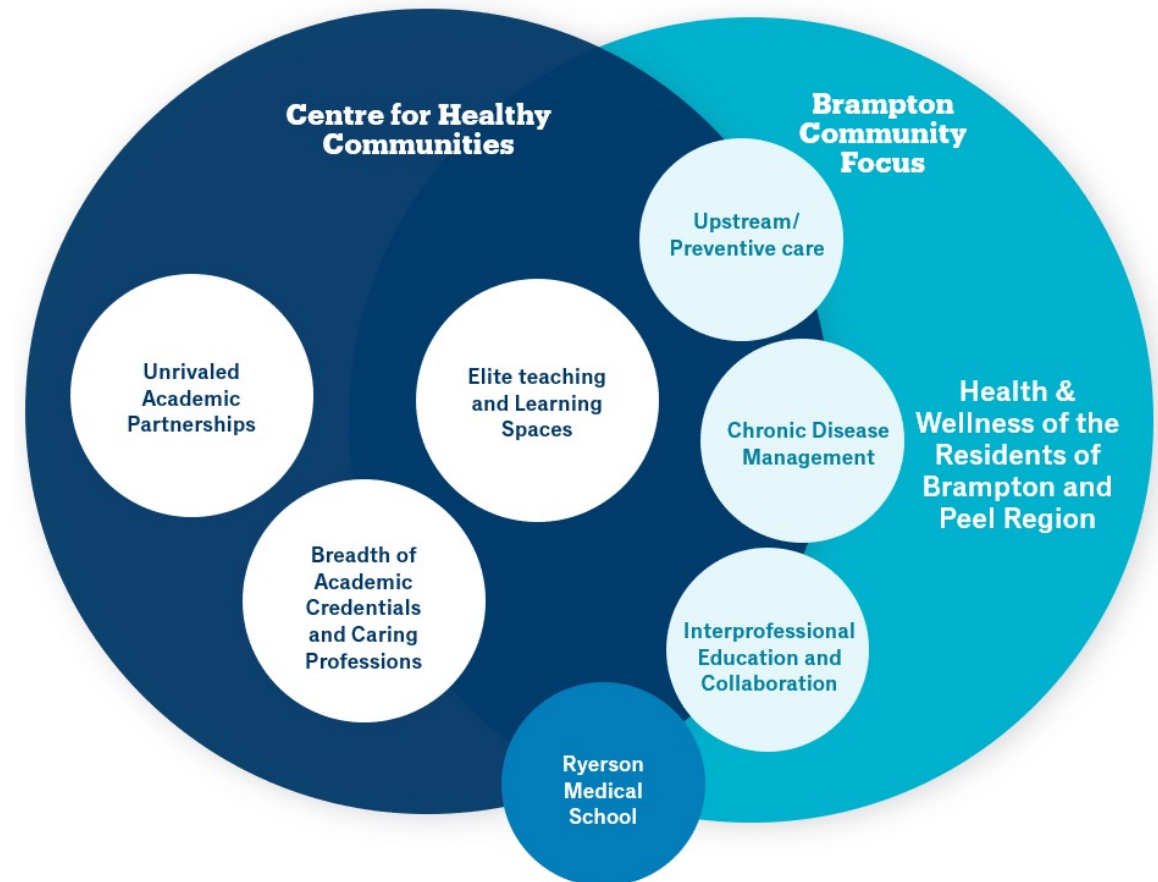


Building on Sheridan's existing health programs, the Centre will focus on upstream care and chronic disease prevention.

It will enhance Brampton and Peel's healthcare landscape by:

- expanding access to clinical care
- meeting community health needs by educating allied health professionals
- develop innovative health education programming to meet the local workforce needs

Conceptual Program Organization



With a focus on upstream care, the Centre will embody the intersection of multiple health fields and support Sheridan's modern approach to health and wellness, providing holistic, inclusive care that helps prevent chronic illness.

The Sheridan/Ryerson partnership will bring a premier medical school to Brampton and train the next generation of healthcare providers.



The Centre for Healthy Communities will be a state-of-the-art facility that will:

1

Develop new community-accessible clinical space, **cross-cultural resources and supports** for diverse communities accessing the healthcare system



2

Establish a **virtual reality health education** facility



3

Establish a Centre for Chronic Disease Management that addresses **patient-centred care** and is rooted in the philosophy of exercise as medicine



4

Rethink education in **allied health** to intentionally weave work integrated learning, applied research opportunities, in person learning and virtual reality instruction into every aspect of our students' education.



A new transit hub will be a critical new piece of infrastructure that will make transit the preferred mobility choice to connect Sheridan with the surrounding Brampton community.



Sheridan is committed to exploring a range of partnership opportunities with other public and private sector stakeholders to deliver on the vision for the Centre. At the same time, Sheridan is reaching out to municipal, provincial and federal governments to secure additional financial support in order to deliver on this initiative.



In the shorter term, the Centre will deliver an economic benefit to local, provincial and federal economies through its planning and physical development.

In the longer term, the Centre's work in upstream care will seek to deliver increased quality of life through lower rates of chronic diseases. These tangible community benefits may also result in decreased costs to the healthcare system.

Your Support

We've galvanized the support of the healthcare sector, academia and industry. We invite Brampton City Council to invest \$2.5M over two years to join this compelling vision. Together, we will address the long-term healthcare needs of the City, contribute to long-term job creation, advance culturally-competent medical training, and bring even more university-level educational opportunities to Brampton.

Thank you



Data Sources

- ¹ <https://www.peelregion.ca/health/resources/pdf/CHSR-changing-landscape-health-peel-exec-summary.pdf>
- ² <https://geohub.brampton.ca/pages/community>
- ³ <https://www.peelregion.ca/health/resources/pdf/CHSR-changing-landscape-health-peel-exec-summary.pdf>
- ⁴ <https://geohub.brampton.ca/pages/profile-diversity>
- ⁵ https://med-fom-ubcmj.sites.olt.ubc.ca/files/2015/11/ubcmj_2_1_2010_20-23.pdf
- ⁶ <https://www.fao-on.org/en/Blog/Publications/2021-health-estimates#Chart2>
- ⁷ <https://www.fao-on.org/en/Blog/media/MR-2021-ltc-estimates>
- ⁸ <https://www.fao-on.org/en/Blog/media/MR-2021-health-estimates>