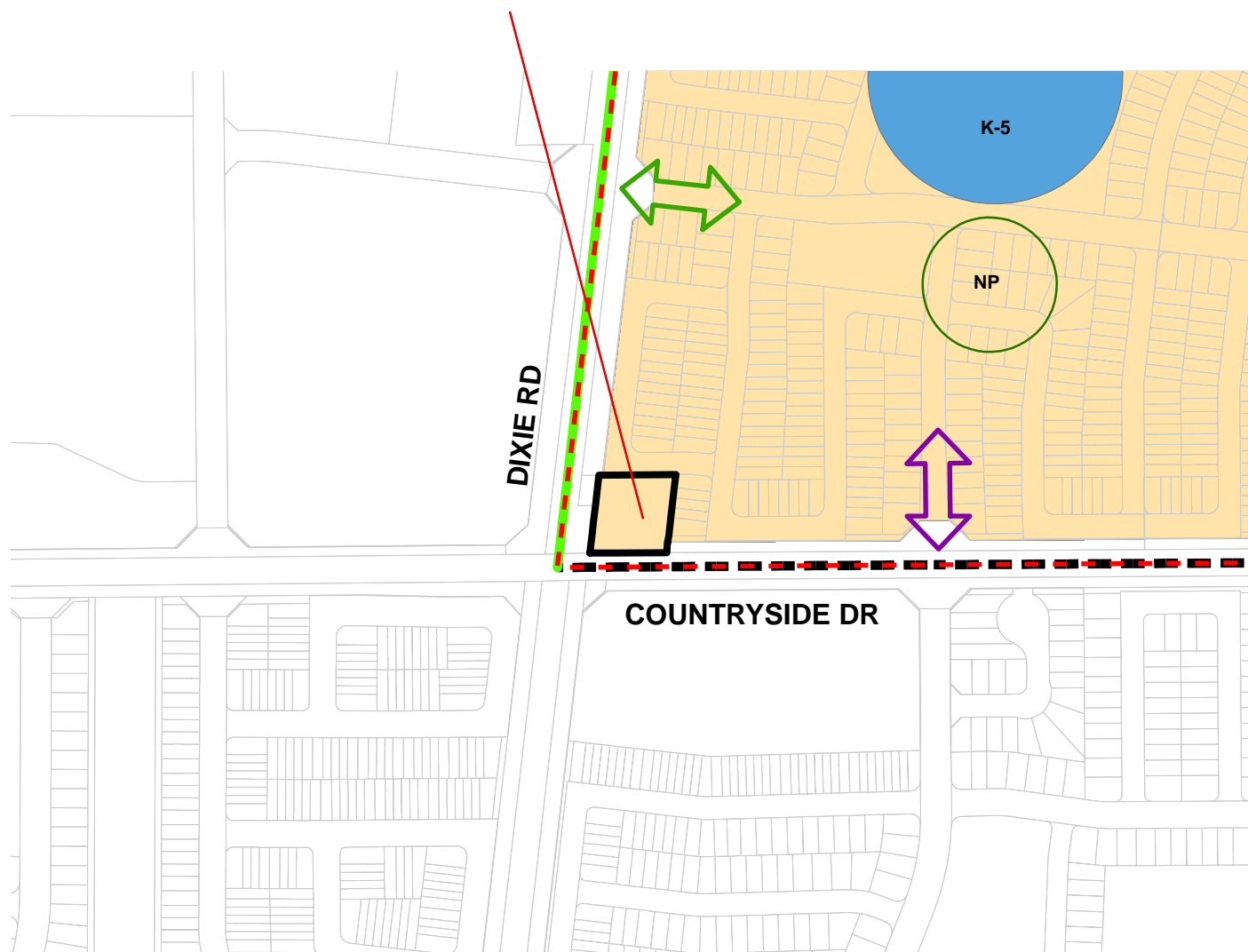


## SUBJECT LANDS



EXTRACT FROM SCHEDULE SP48(B) FROM THE DOCUMENT KNOWN AS THE COUNTRYSIDE VILLAGES SECONDARY PLAN

<b>ROAD NETWORK</b> GATEWAY POTENTIAL INTERSECTION COLLECTOR ROAD MINOR ARTERIAL MAJOR ARTERIAL (REGIONAL) INTERSECTION <b>RECREATION OPEN SPACE</b> CITY WIDE PARK NEIGHBOURHOOD PARK	<b>COMMERCIAL</b> DISTRICT RETAIL MOTOR VEHICLE COMMERCIAL CONVENIENCE RETAIL NEIGHBOURHOOD RETAIL COMMERCIAL MIXED USE VILLAGE_CORE SPECIAL POLICY AREA AREA SUBJECT TO THIS AMENDMENT	<b>INSTITUTIONAL</b> PUBLIC JUNIOR ELEMENTARY SCHOOL SITE PUBLIC MIDDLE SCHOOL SITE SEPERATE ELEMENTARY SCHOOL SEPERATE SECONDARY SCHOOL SITE PUBLIC SECONDARY SCHOOL SITE PLACE OF WORSHIP	<b>NATURAL HERITAGE &amp; ENVIRONMENTAL MANAGEMENT</b> VALLEYLAND STORMWATER MANAGEMENT FACILITY WOODLOT <b>RESIDENTIAL</b> LOW DENSITY MEDIUM DENSITY MEDIUM / HIGH DENSITY RESIDENTIAL LIVE / WORK
---	---	---	--



**BRAMPTON**  
Flower City

PLANNING, BUILDING AND ECONOMIC DEVELOPMENT

Author: ckovac

Date: 2021/07/26

## APPENDIX 4 SECONDARY PLAN DESIGNATIONS HABITAT FOR HUMANITY

CITY FILE: OZS-2021-0025