

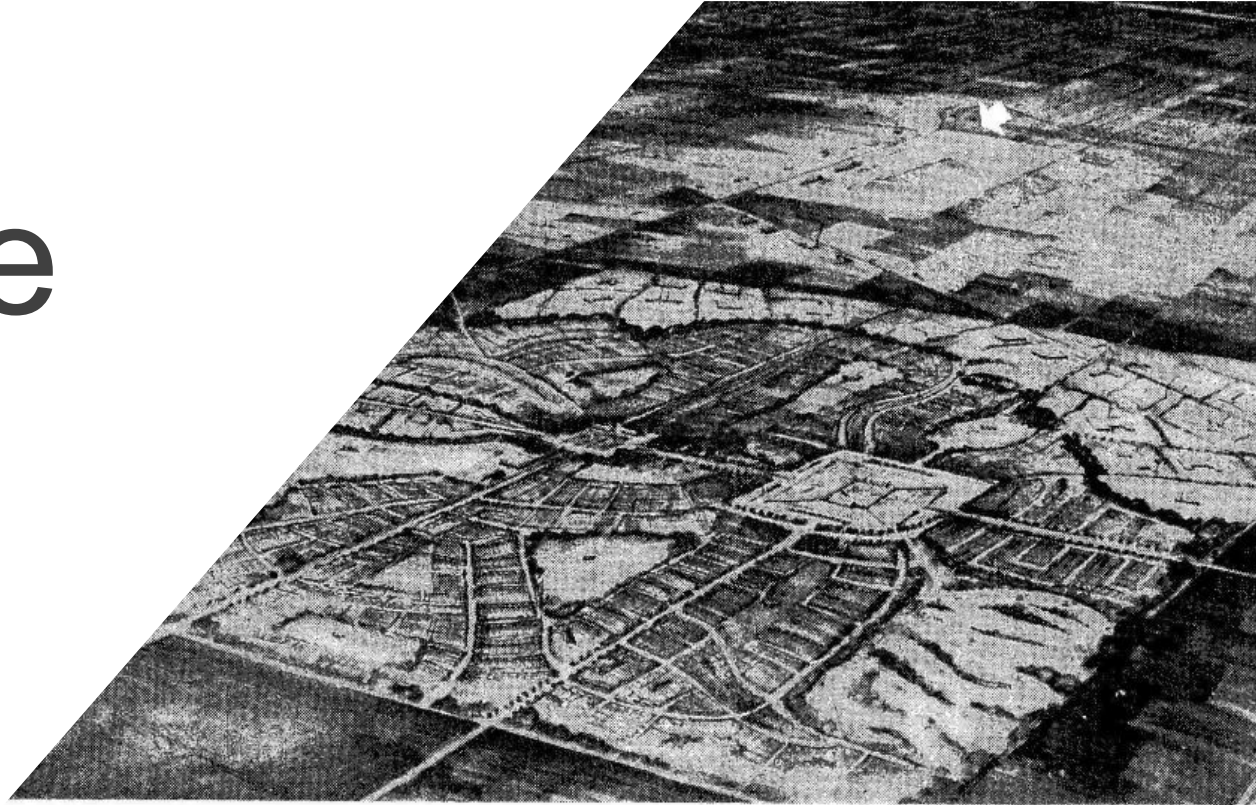
Bramalea
CANADA'S FIRST SATELLITE CITY*

a completely new and integrated community for 50,000 people now
under development in Peel County, just north of Malton.

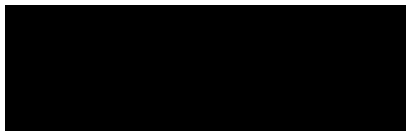
Bramalea Cultural Heritage Landscape Project

Heritage Staff
PRESENTATION

RE: Bramalea Character Study Request



Canada's first satellite city will cover a 10-mile sq. city of 50,000 adjacent to the northwest limits of the Metro Toronto planning area. It will take an estimated 10 to 20 years to complete: success or failure will influence other Canadian developers. Prospectus shows development is broken down into 19% industrial sites, 1.5% commercial, 72% residential and 8.5% parklands and greenbelt.

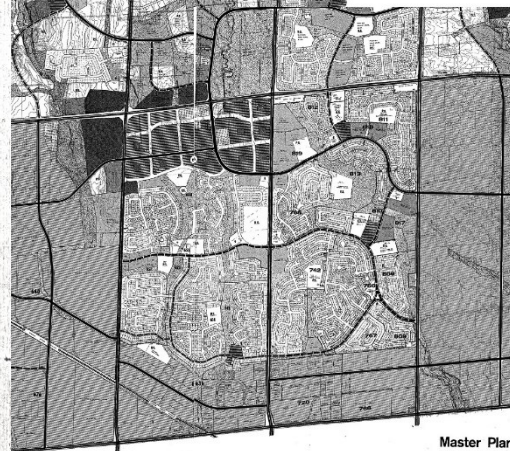
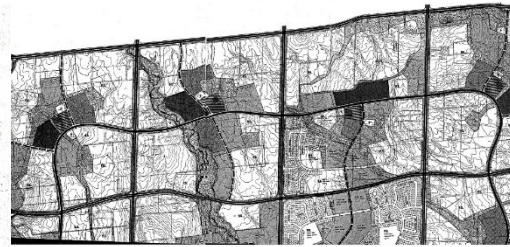


Provincial Policy Statement

I live in
Bramalea
—doesn't
everybody?



Bonnie Bramalea



Master Plan
Bramalea

Today's Presentation

Definitions

Gain an understanding of what a Cultural Heritage Landscape is and its implication for Bramalea.

Why Bramalea?

A non-exhaustive list of reasons Bramalea is worthy of this type of recognition and commemoration.

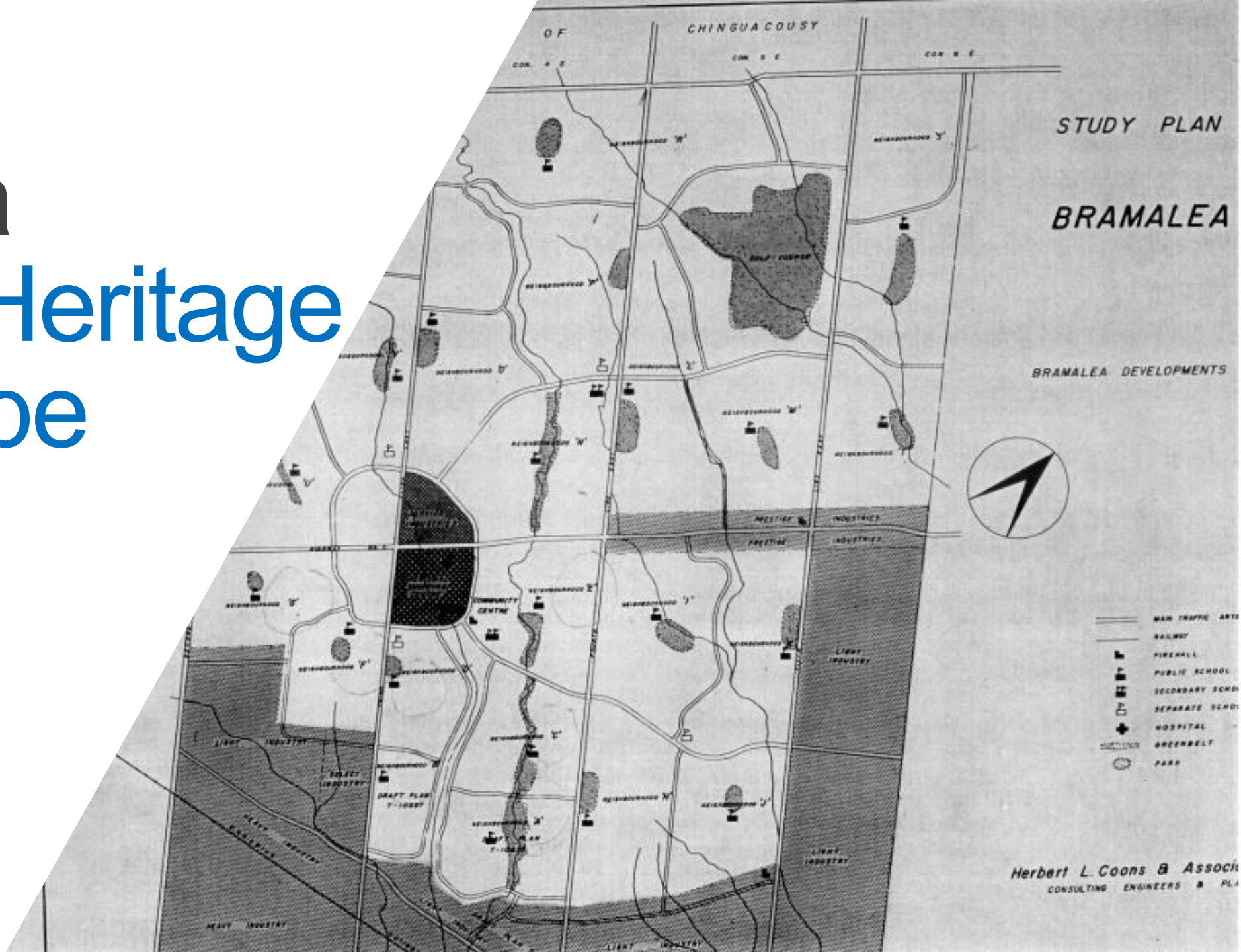
Moving Forward

Our first steps of the project, where we want to go including desired outcomes, and how we hope to get there.

What is a Cultural Heritage Landscape

DEFINITION

The definition of a “Cultural Heritage Landscape” has changed over time within Ontario’s legislation.



Provincial Policy Statement



PPS 2005:

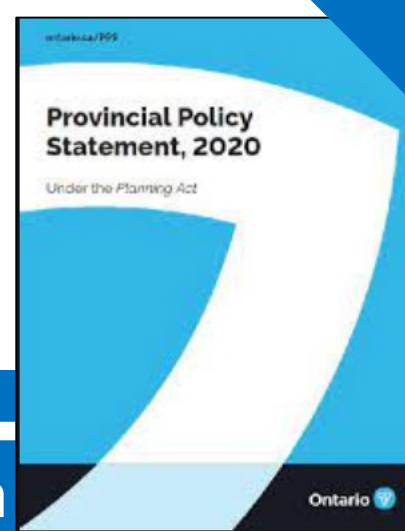
Cultural heritage landscape: means **a defined geographical area of heritage significance** which has been modified by human activities and is **valued by a community**. It involves a grouping(s) of individual heritage features such as structures, spaces, archaeological sites and natural elements, which together form a significant type of heritage form, distinctive from that of its constituent elements or parts. Examples may include, but are not limited to, heritage conservation districts designated under the Ontario Heritage Act; and villages, parks, gardens, battlefields, mainstreets and neighbourhoods, cemeteries, trailways and industrial complexes of cultural heritage value.

Significant: means... (g) in regard to cultural heritage and archaeology, resources that are **valued for the important contribution they make to our understanding of the history of a place**, an event, or a people.

PPS 2014:

a geographical area that may have been modified by human activity and is defined as **having cultural heritage value or interest by a community**, including an Aboriginal community. The area may involve features such as structures, spaces, archaeological sites or natural elements that are valued together for their interrelationship, meaning or association.

The definition within 2014 PPS was expanded to include some more broad terminology that allows us to consider a wider variety of areas and resources as a CHL.



2014 Provincial Policy Statement

Under the Planning Act

What will a Cultural Heritage Landscape do for Bramalea?



Inform

Influence

Educate

Recognize

Inform the Official Plan with regard to preservation.

Influence large scale redevelopments within the area.

Recognize the unique character and history of Bramalea.

Educate residents and the general public alike.

What the Cultural Heritage Landscape

Will Not do:



This designation will not make it harder for homeowners to obtain building permits or make changes to their home.



This designation will not negatively impact property values for lands within the CHL area.

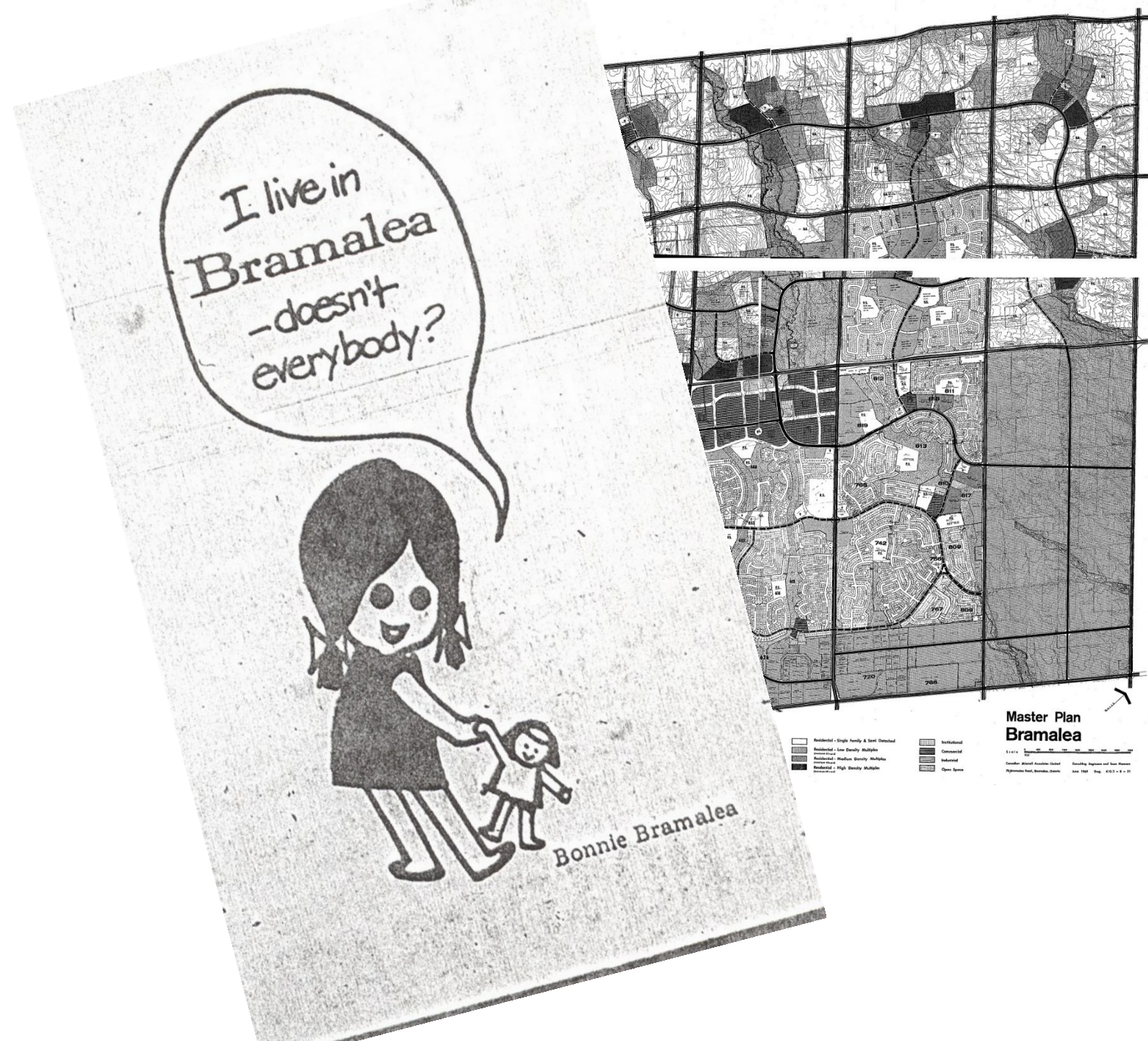


This designation will not halt redevelopment within Bramalea, but require consideration for the area's unique features for major redevelopment projects.

Why Bramalea?

Bramalea is an extremely unique example of master planning, as well as the evolution of an incredibly distinct community identity.

Bramalea is a community within a community whose interesting history should be preserved and recognized.



Reasons for Conservation

THERE ARE A NUMBER OF REASONS BRAMALEA, INCLUDING BUT NOT LIMITED TO THOSE LISTED HERE



MASTERPLANNING

Bramalea is a unique instance of Master Planning, uncommon for its time.



AFFORDABLE HOUSING

The affordable housing projects in Bramalea were a huge success, an example of great public-private collaboration.



LETTER SECTIONS

Bramalea was designed and named in sections distinguished by letters, unseen almost anywhere else.



LOT DESIGN/CONFIGURATION

The unique and random nature of those sections of Bramalea containing “zero lot houses”, an example of subdivision planning exclusive to the areas.



EVOLUTION OF BUILT FORM

The development of Bramalea over decades resulted in a community with a built form that mirrors the socioeconomic trends through its ages of development.



LAND USE PLANNING PRINCIPLES

Bramalea was designed to be a self contained community in which people could live, work, and play, an early example of land use planning principles we strive to achieve in modern development.



Anticipated & Desired Outcomes



Visual Recognition and Creating a Sense of Place

Things like Bramalea specific signage create a more visual, interactive representation of the community and contributes to creating a specific sense of place.



Policy Consideration: The New Official Plan & The 2040 Vision

As the City moves toward its 2040 Vision and completion of a new Official Plan, we want the information and guidance from this project to positively inform and influence development and redevelopment within Bramalea.

**BRAMPTON
PLAN**

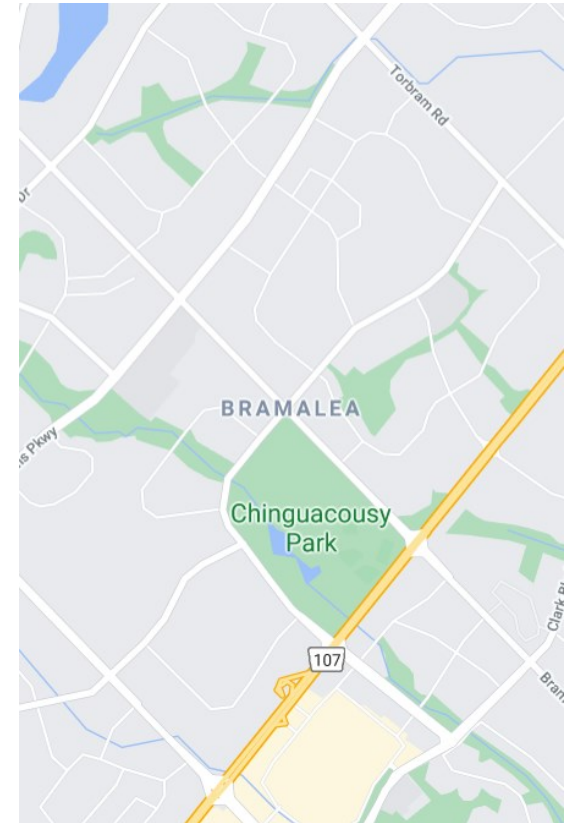




There are already heritage resources in Bramalea.

This process will also enable us to identify and designate those resources worthy of designation.

A Level of Designation



There may be resources we are yet to consider.

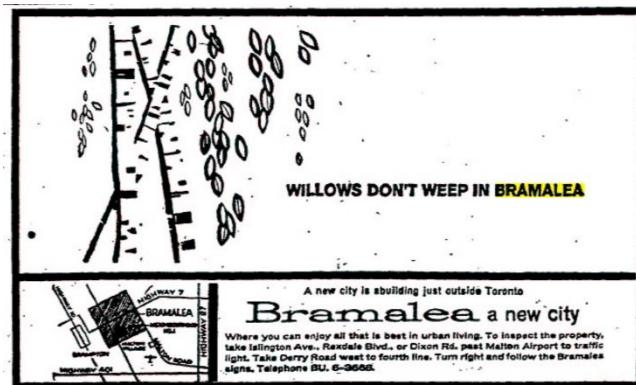
Because cultural heritage is also related to the story of a place, in learning more stories of Bramalea, we may unearth more places worthy of consideration for designation.

Uniqueness of this Project & Uniqueness of Bramalea

The vast majority of examples of CHL's across Ontario include places that are rich in built resources and have heritage dating back a century (at least).

Bramalea is a unique neighbourhood and it should be fitting that this use of a CHL will be the first time with what we aim to achieve here.

This will present an interesting challenge for the project in that applying a CHL in this fashion has not yet been done.



Where do we Start?

High level goals allow us to establish specific, measureable, plans for the course of this project.



RESEARCH

We research and compile histories and documents about Bramalea from various sources including historical documents and first hand accounts.



MAPPING & DATA

We make maps, establish boundaries and put together some hard data to include in our documents and recommendations

Wheels turning as budding town takes green path

It's nice to see big developers giving the bicycle the respect it deserves.

Bicycles and their riders will get special treatment at Springdale, that new town being created in Brampton's north end.

It'll be laced with 120 kilometres (75 miles) of paved bike paths. Designated bike ways will run alongside arterial roads within Springdale. The planners were even clever enough to have their future bike trails hook into existing bike trails in **Bramalea** and the built up areas of Brampton.

It's that kind of co-operative thinking that'll quickly solve our constitutional dilemma.

Bike paths are just part of the "greening" of Springdale, which its parents, Metrus Developments Inc. and Venturon Developments, are proposing for their creation.

They're going to plant 100,000 trees and shrubs throughout the place, which will have 75,000 residents when it's built out in the projected 15 years.

There'll be a tree for every home planned in the community and a tree for every 12 metres of street frontage. The plantings start this spring with 10,000 seedlings going into the ground.



light bulb and a newspaper recycling bundler.

But, you gotta buy your own bike.

And to keep Springdale dwellers thinking green, the developers are naming the community's eight different neighborhoods after distinct geographical areas, such as mountains, tundra, grasslands, forests, deserts and so on.

The first neighborhood where homes are already under construction carries the forest theme and therefore the street names will reflect that particular environment with names such as Chipmunk, Black Oak, and lost.

Ah, well maybe not, lost. The street names are being suggested by 100 **Bramalea** school children. Metrus will check the spelling.

One Metrus will spend several



ENGAGE

We engage with residents of Bramalea and others to gather stories and histories to establish a clear and communicable sense of the community feel.



TERMS OF REFERENCE

We establish a Terms of Reference that will be the guiding document for creating the Cultural Heritage Landscape

First Steps



Establish Terms Of Reference

Establishing our “TOR” will create a roadmap for the project, including how we will engage the community.



Research & Mapping

A big part of this project will be establishing as much history, in a written *and* visual sense, as we can.

We are
Here

What stage are we at?

We are still in the early stages of this project, planning our approach and ensuring that we line this project up for success through careful consideration.

Where
to Go

We are seeking the Board’s comments and feedback to help guide our next steps.

Once we have completed our initial process, we will present a further status update to the Brampton Heritage Board.

Thank you!
*Feedback and
comments are
welcomed*

Contact:

Shelby Swinfield, Heritage Planner

Shelby.swinfield@brampton.ca

