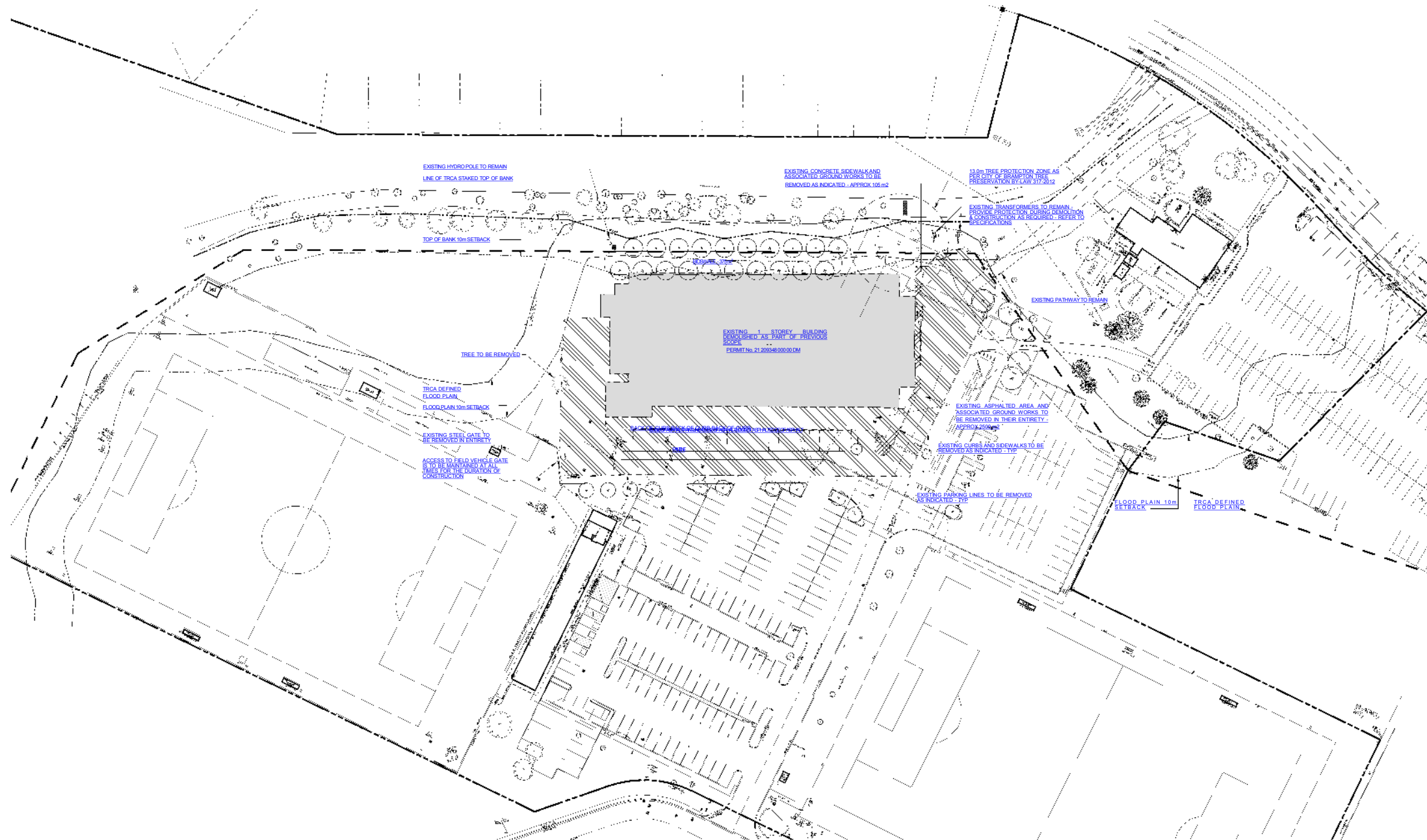


Victoria Park Arena & Sports Hall of Fame

Brampton, Ontario

September 21, 2021

3	Existing Arena and Site Conditions
5	Summary of Key Recommendations
7	Glulam Beam Reclamation
9	Proposed Building and Site
12	Exterior Building Design Overview
16	Interior Renderings and Proposed Adaptive Reuse





17 WATER VALVE/METER TO REMAIN



13 EXTERIOR STORAGE



12 GAS METER TO REMAIN



16 ARENA INTERIOR



11 SOUTH-EAST FACADE OVERVIEW



15 WEST FACADE



10 FIBRE CABLE MARKER



8 GARBAGE AND DEBRIS



6 EAST FACADE OVERVIEW



4 NORTH FACADE UTILITIES



2 NORTH-EAST FACADE OVERVIEW



14 HYDRO POLE TO REMAIN



9 GARBAGE AND DEBRIS



7 EAST FACADE ENCLOSURE



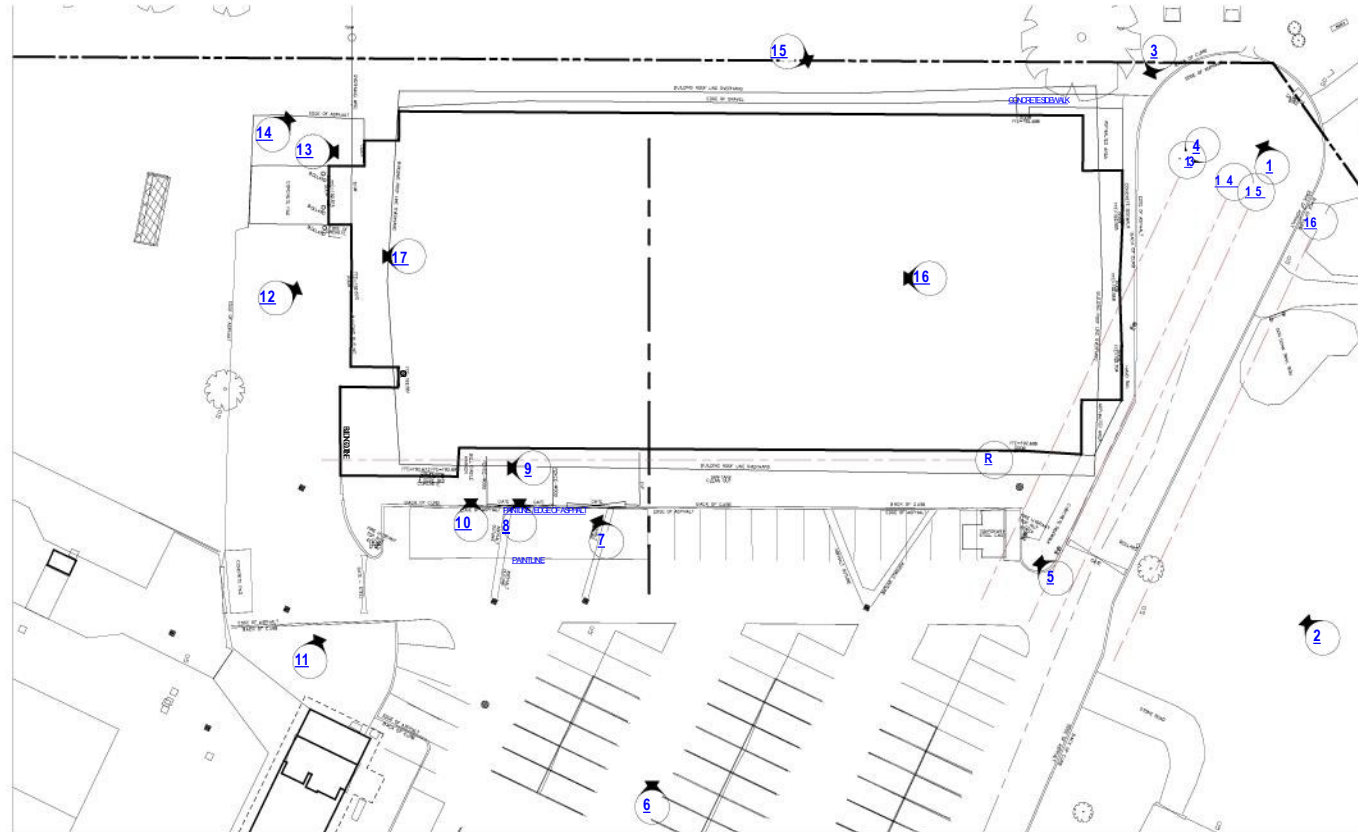
5 NORTH-EAST FIRE HYDRANT



3 STRUCTURAL SALVAGE



1 TRANSFORMER VAULTS





ABC

The following recommendations to mitigate the impact of the loss of Victoria Park Arena include:

1 That unique and distinct architectural features be salvaged including:

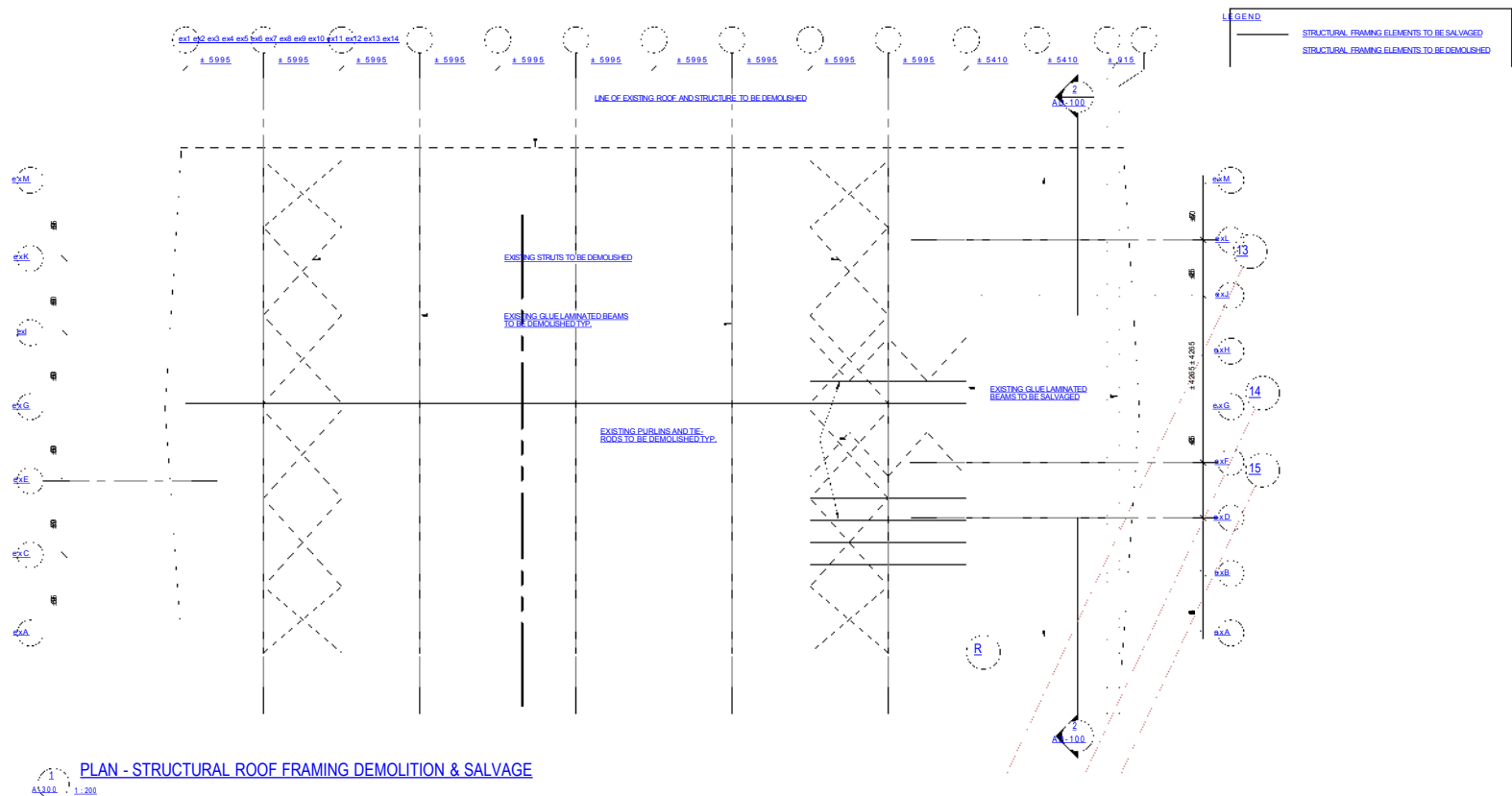
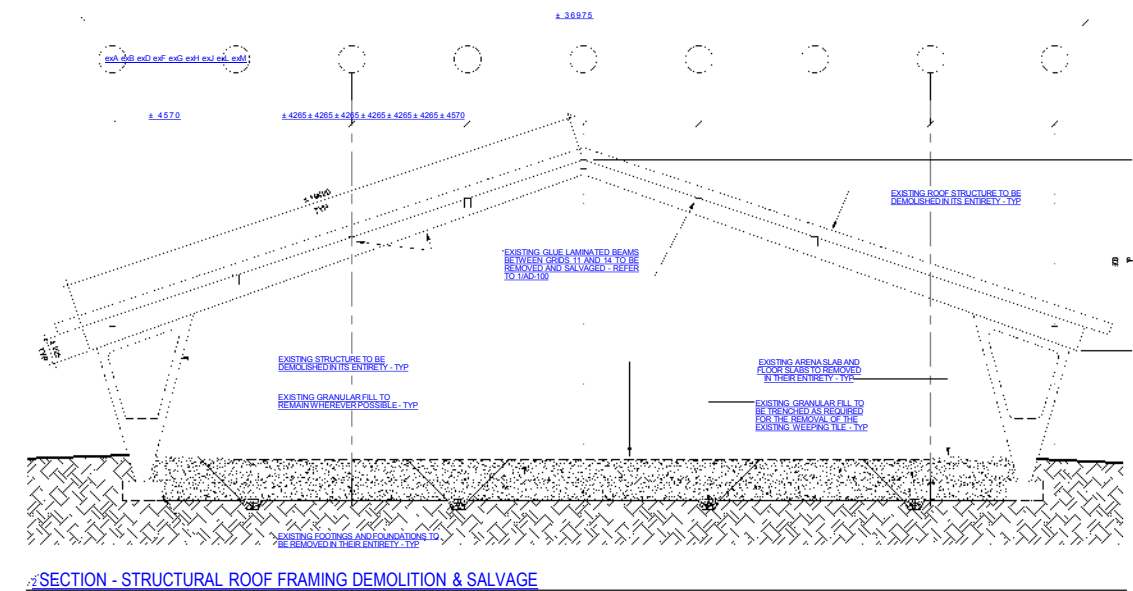
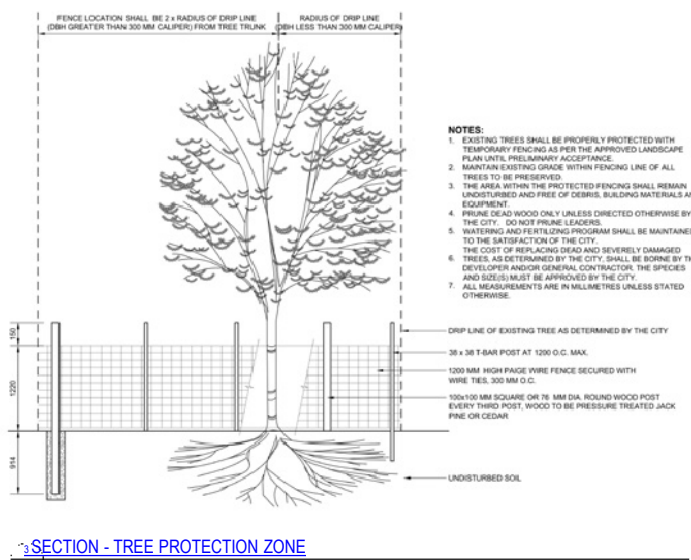
A The front section of glulam beams that do not have significant fire damage;

B The concrete pillars supporting these glulam beams; and,

C The 1966 date plaque.

2 That salvaged materials be thoughtfully and meaningfully incorporated into the new recreational facility.

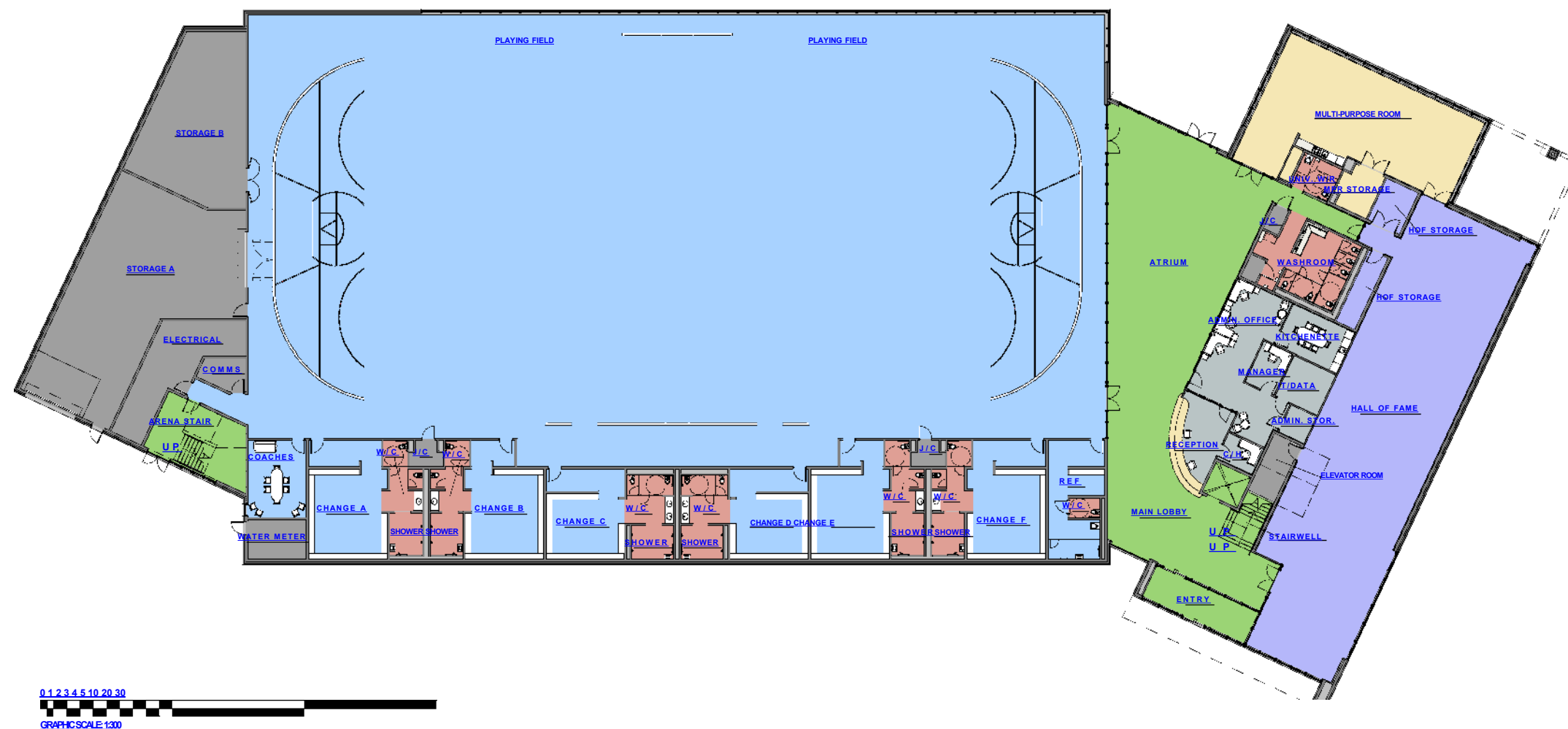
3 That an interpretive plaque or display be installed in the new recreational facility in a highly trafficked, publicly accessible space.

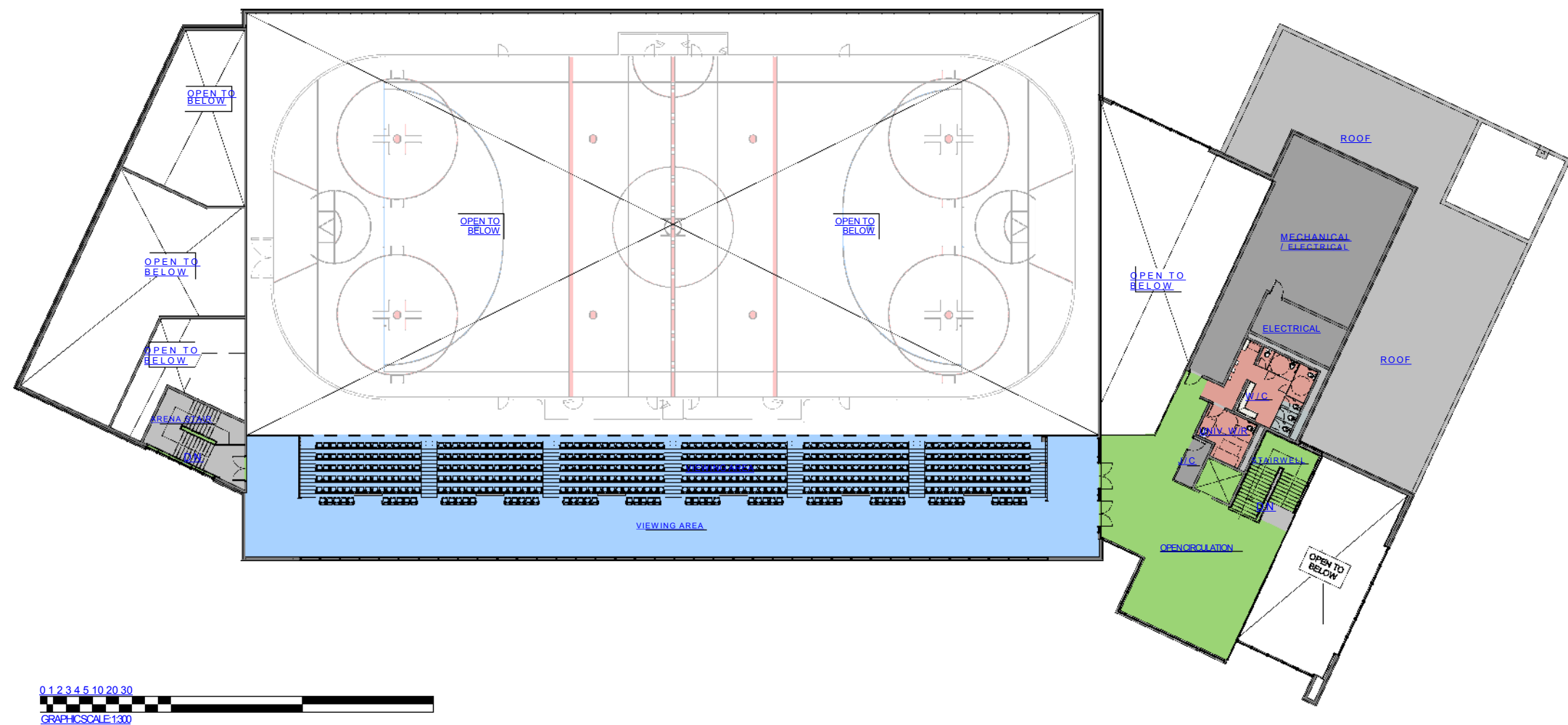




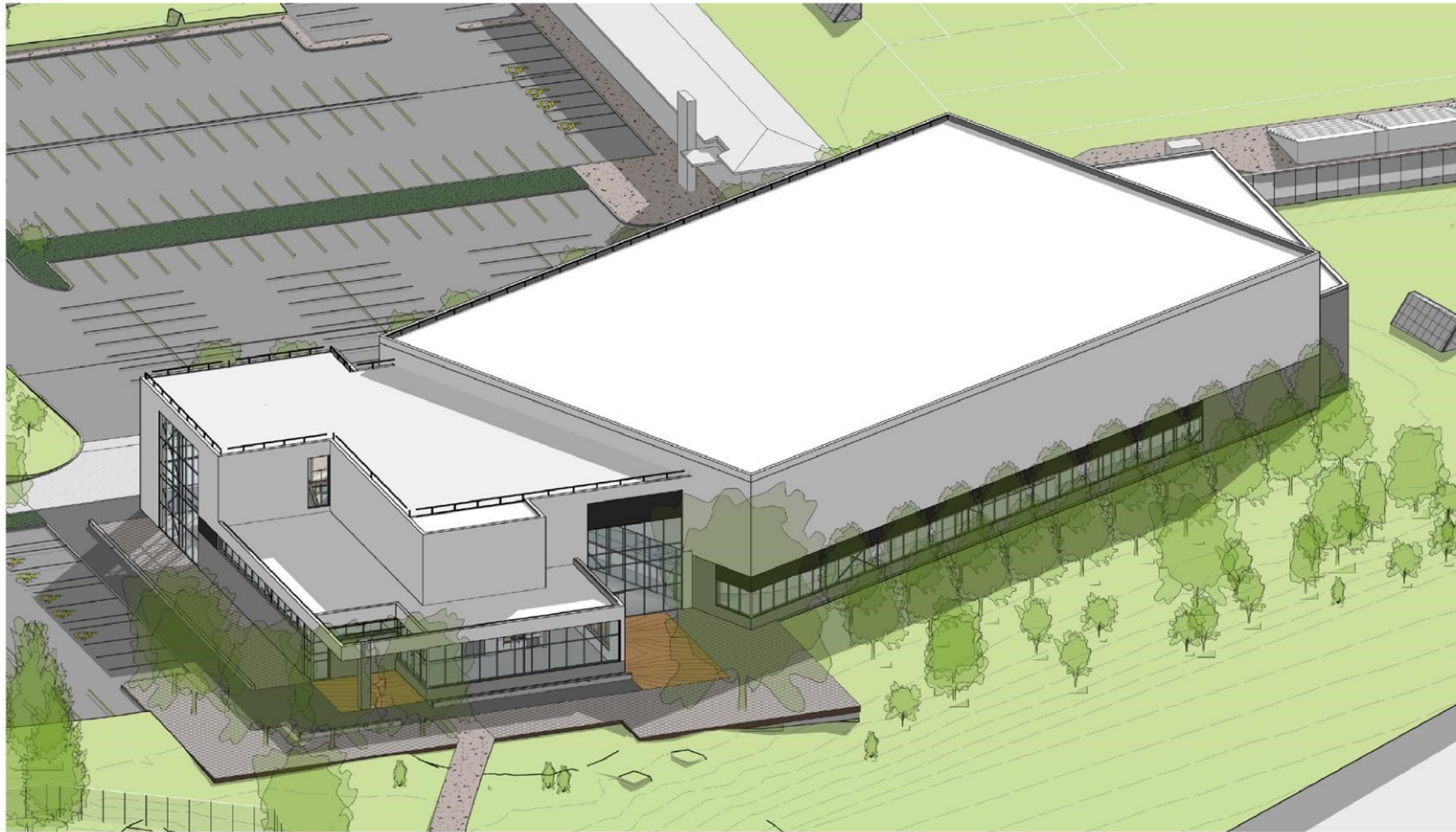














Main Entrance View 14



Secondary Entrance View | 15



Interior Entrance Kiosk View ,16



Interior Atrium Showing Proposed Repurposed Glulam Beams | 17



Second Floor Interior View Looking Towards Arena Entrance | 18

Ames" -At-

ofi

JAMES F. McCURRY
VICTORIA PARK ARENA

-7S, fl

