

METRIC: DISTANCES AND COORDINATES SHOWN ON THIS PLAN ARE IN METRES AND CAN BE CONVERTED TO FEET BY DIVIDING BY 0.3048.

ATTACHMENT 2

PLAN 43M- 2049

I CERTIFY THAT THIS PLAN IS REGISTERED IN THE LAND REGISTRY OFFICE FOR THE LAND TITLES DIVISION OF PEEL NO. 43 AT 4:29 O'CLOCK ON THE 8th DAY OF March, 2018 AND ENTERED IN THE PARCEL REGISTER FOR PROPERTY IDENTIFIER No. 14085-4533 AND THE REQUIRED CONSENTS ARE REGISTERED AS PLAN DOCUMENT NO. P83294071

Lisa Otten
Representative For Land Registrar

THIS PLAN COMPRISES ALL OF PIN 14085-4533.

PLAN OF SUBDIVISION OF
BLOCK 228
REGISTERED PLAN 43M-1651
CITY OF BRAMPTON
REGIONAL MUNICIPALITY OF PEEL
SCALE 1:1000

20 10 0 20 40 60 80 100 METRES
SCHAEFFER DZALDOV BENNETT LTD.

NOTES

NOTES	DENOTES	SHORT STANDARD IRON BAR PLANTED
□ 898	•	IRON BAR PLANTED
□ 922	•	FOUND MONUMENT
SSB	•	STANDARD IRON BAR
IB	•	SHORT STANDARD IRON BAR
PI	•	IRON BAR
P	•	REGISTERED PLAN 43M-1651
1225	•	REGISTERED PLAN 43M-1590
922	•	SCHAEFFER DZALDOV BENNETT LTD.
PC	•	DAVID B. SEARLES, O.L.S.
PCC	•	POINT OF REVERSE CURVE
WIT	•	POINT OF COMPOUND CURVE
CLF	•	WITNESS
	•	CHAIN LINK FENCE

ALL FOUND MONUMENTS ARE SSB (922) UNLESS NOTED OTHERWISE.
TOTAL AREA OF SUBDIVISION = 2.8227 ha.

OWNER'S CERTIFICATE

THIS IS TO CERTIFY THAT:

- LOTS 1 TO 70, BOTH INCLUSIVE, THE STREET, NAMED GERANIUM CRESCENT, HAVE BEEN LAID OUT IN ACCORDANCE WITH OUR INSTRUCTIONS.
- THE STREET IS HEREBY DEDICATED TO THE CORPORATION OF THE CITY OF BRAMPTON AS A PUBLIC HIGHWAY.

DATED THE 18th DAY OF JULY, 2017.
BRAMPTON WEST 1-2 LIMITED

Dorothy Ross
DOROTHY ROSS - A.S.O.
'I HAVE THE AUTHORITY TO BIND THE CORPORATION'

Rudolph P. Bratty
RUDOLPH P. BRATTY - SECRETARY
'I HAVE THE AUTHORITY TO BIND THE CORPORATION'

SURVEYOR'S CERTIFICATE

I CERTIFY THAT:

- THIS SURVEY AND PLAN ARE CORRECT AND IN ACCORDANCE WITH THE SURVEYS ACT, THE SURVEYORS ACT, THE LAND TITLES ACT AND THE REGULATIONS MADE UNDER THEM.
- THE SURVEY WAS COMPLETED ON THE 26th DAY OF MAY, 2017.

DATE: JULY 18, 2017.

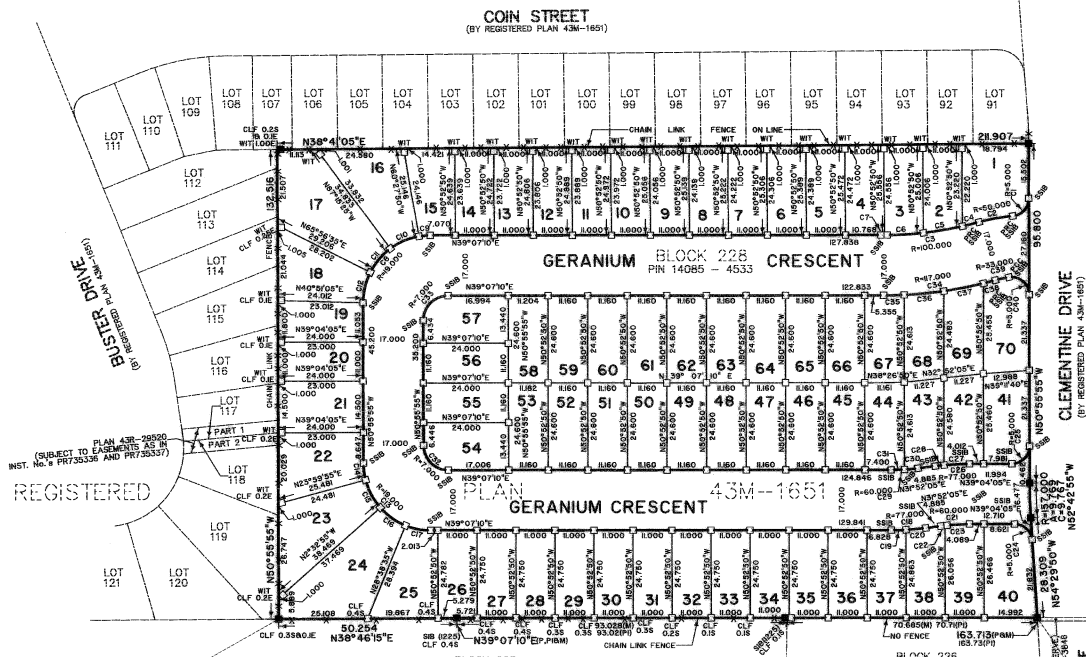
Dan Dzaldov
DAN DZALDOV
ONTARIO LAND SURVEYOR



SCHAEFFER DZALDOV BENNETT LTD.
ONTARIO LAND SURVEYORS

64 JARDIN DRIVE CONCORD, ONTARIO L4K 3P3 TEL: (416) 987-0101
CALC. SL. DRAWN ACAD/LW CHECKED WMF SCALE 1:1000 JOB NO. 02-398-32A

JULY 18, 2017



REGISTERED

PLAN

CURVE TABLE				
NUM	ARC	RADIUS	BEARING	CHORD
C1	7.467	5.000	N8°09'00"W	6.792
C2	9.999	50.000	N29°04'30"E	9.984
C3	27.230	100.000	N38°19'05"E	27.146
C4	4.810	100.000	N24°53'45"E	4.810
C5	11.664	100.000	N29°28'20"E	11.556
C6	11.024	100.000	N35°49'40"E	11.018
C7	0.232	100.000	N39°03'10"E	0.232
C8	29.862	19.000	N5°54'25"E	26.962
C9	3.178	19.000	N34°19'40"E	3.174
C10	8.885	19.000	N6°06'20"E	8.804
C11	8.887	19.000	N10°39'25"W	8.807
C12	8.912	19.000	N37°29'40"W	8.831
C13	29.828	19.000	N64°05'35"E	26.858
C14	4.808	19.000	N58°10'55"W	4.795
C15	8.939	19.000	N78°54'30"W	8.856
C16	8.797	19.000	N74°21'00"E	8.719
C17	7.264	19.000	N3°06'10"E	7.240
C18	9.744	77.000	N37°29'40"E	9.738
C19	4.174	77.000	N37°34'00"E	4.174
C20	5.570	77.000	N33°56'25"E	5.569
C21	7.539	60.000	N35°28'08"E	7.534
C22	0.612	60.000	N37°09'40"E	0.612
C23	6.927	60.000	N37°45'40"E	6.923
C24	7.543	5.000	N82°17'02"E	6.848
C25	7.854	5.000	N5°55'55"W	7.071
C26	9.675	77.000	N35°28'05"E	9.669
C27	7.158	77.000	N36°24'15"E	7.156
C28	2.517	77.000	N37°46'20"E	2.517
C29	7.593	60.000	N35°29'40"E	7.588
C30	3.830	60.000	N3°41'50"E	3.829
C31	3.763	60.000	N37°19'20"E	3.762
C32	10.989	7.000	N84°05'35"E	9.955
C33	1.002	7.000	N5°54'25"W	9.904
C34	31.859	17.000	N37°19'05"E	31.761
C35	5.807	17.000	N37°41'50"E	5.807
C36	11.218	17.000	N33°34'45"E	11.213
C37	13.578	17.000	N27°54'55"E	13.574
C38	3.456	17.000	N24°17'50"E	3.456
C39	3.923	33.000	N26°55'25"E	3.921
C40	8.617	5.000	N7°41'55"E	7.589

BEARINGS ARE UTM GRID, DERIVED FROM SPECIFIED CONTROL POINTS 042010190 AND 042010192, UTM ZONE 17, NAD83 (ORIGINAL).
DISTANCES ARE GROUND AND CAN BE CONVERTED TO GRID BY MULTIPLYING BY A COMBINED SCALE FACTOR OF 0.999697.

SPECIFIED CONTROL POINTS (SCP): UTM ZONE 17, NAD83 (ORIGINAL).
COORDINATES TO URBAN ACCURACY PER SEC. 14(2) OF OREG. 216/10

POINT ID.	NORTHING	EASTING
SCP 042010190	4832783.502	601929.104
SCP 042010192	4830126.219	599887.312

COORDINATES CANNOT, IN THEMSELVES, BE USED TO RE-ESTABLISH CORNERS OR BOUNDARIES SHOWN ON THIS PLAN

MUNICIPAL APPROVAL
211-14008
APPROVED UNDER SECTION 51 OF THE
PLANNING ACT, R.S.O. 1990 THIS 22nd DAY
OF March, 2018.

Commissioner, Rob Elliott
PLANNING AND DEVELOPMENT SERVICES
DEPARTMENT, CORPORATION
OF THE CITY OF BRAMPTON