



2022 Pedal Poll – Vélo Canada Bikes

Brampton Cycling Advisory Committee
Thursday April 21, 2022



Vélo Canada Bikes is a dynamic organization providing a strong national voice for everyday cycling in Canada. We envision a Canada where people of all ages and abilities can cycle safely, conveniently, and enjoyably to/from/within any community in the country.





Pedal Poll (Canada's National cyclist count)

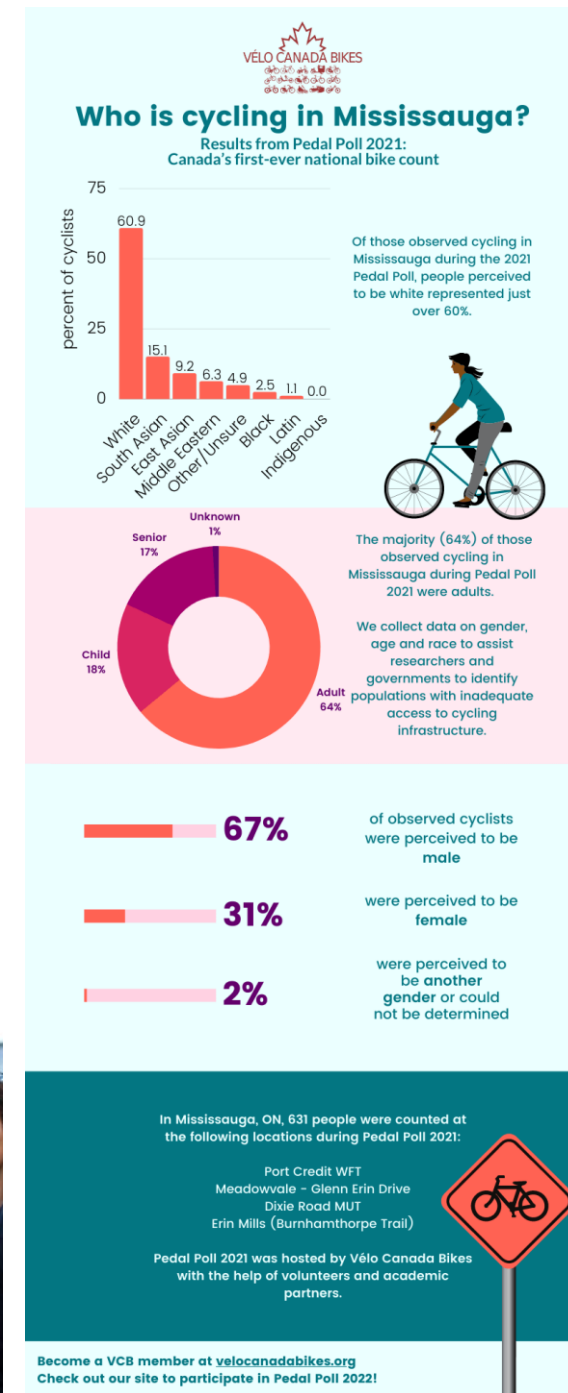
- volunteers stationed across the country observe cyclists pass by, collecting valuable data on who is biking and where. Communities collect data that can be compared regionally, nationally, and internationally

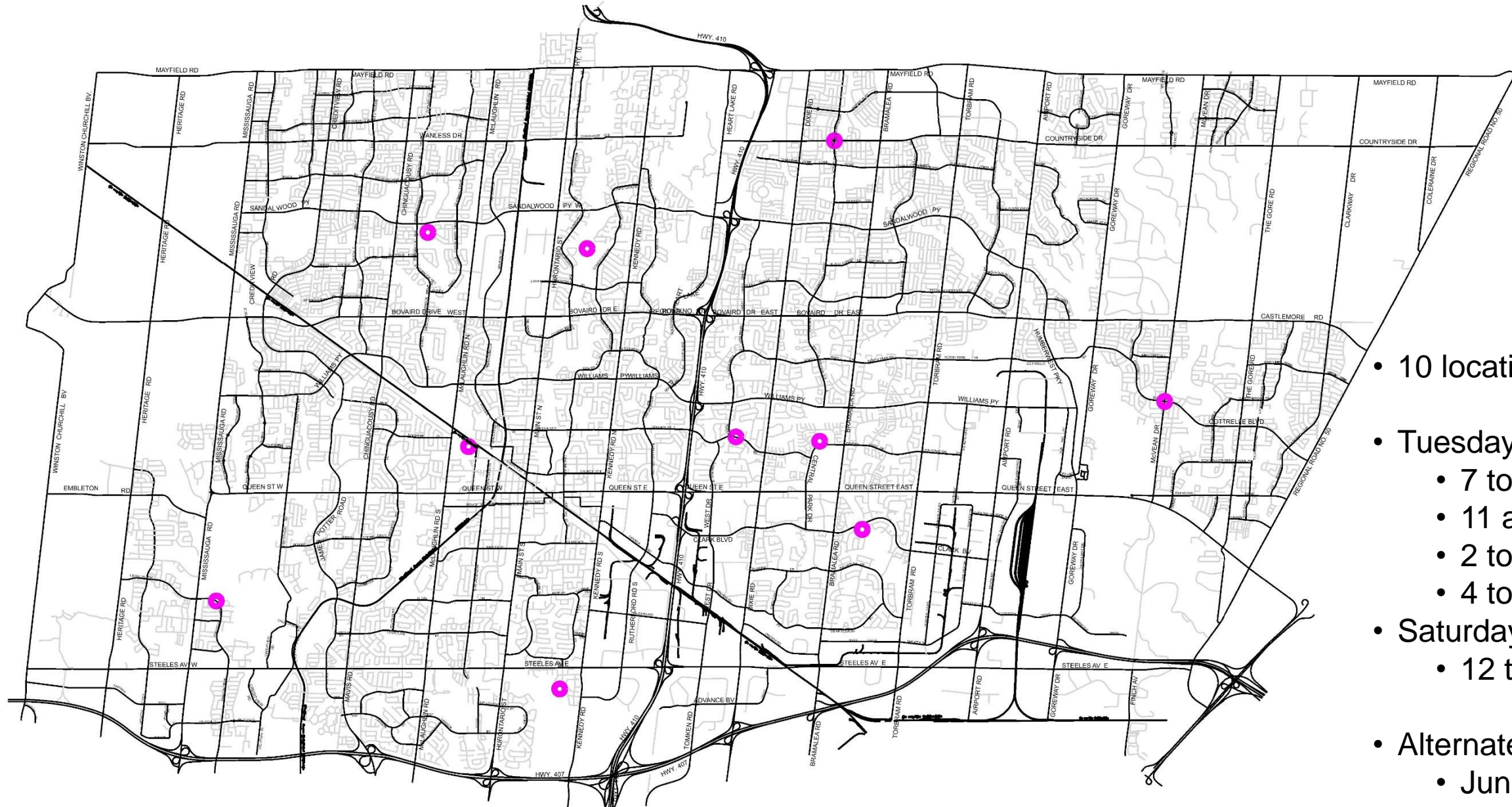
Brampton has been invited to participate in Pedal Poll as a focus community.

Why

Pedal Poll can provide the opportunity to:

- Capture travel patterns (during Covid-19)
- Work Towards Inclusion
- Address Climate Change





- 10 locations
- Tuesday June 6th
 - 7 to 9 am
 - 11 am to 1 pm
 - 2 to 4 pm
 - 4 to 6 pm
- Saturday June 11
 - 12 to 2 pm
- Alternate dates:
 - June 7 to 14 (weekday)
 - June 17 (weekend)

When and Where

What and Who

- Count cyclists riding in both directions across a screenline (an imaginary line across the street).
- Count all cyclists (including those riding electric bikes, trikes, etc), but not people riding scooters or walking their bikes.
- If there are two people on a bike (tandem or parent/child), count as 2 cyclists.
- Record information about the characteristics of the cyclists. We acknowledge that these decisions will be made based on how the observer perceives a cyclist.
 - Gender of cyclists
 - Ethnicity cyclists
 - Youth (<16 years) and adult cyclists
- One person per count site is generally sufficient, except for sites with higher volumes. It is suggested that for a site with volumes higher than 250 cyclists per hour, 2 people count at that site
 - Person 1: counts cyclists in one direction
 - Person 2: counts cyclists in the other direction

A close-up photograph showing a person's hand holding a silver iPhone. The phone screen displays the 'Vélo Canada Bikes' mobile application. The app's interface features a grid of colorful icons representing different bike categories or services, such as 'Bike Share', 'Rental', and 'Repair'. To the right of the phone sits a white ceramic coffee cup on a matching saucer. The cup has the 'VÉLO CANADA BIKES' logo printed on it, which includes a stylized red maple leaf above the brand name and several small bicycle icons below. The background is softly blurred, suggesting an outdoor setting like a cafe patio with bicycles parked nearby.

Perceived Gender

♀

0%

Woman

♂

0%

Man

?

0%

Other/Unsure

Guide

00:00:00

Done

Perceived Age Group

🧒

0%

Child

🧑

0%

Adult

🧓

0%

Senior

?

0%

Other/Unsure

Perceived Ethnic Origin

👤

0%

White

👤

0%

East Asian

👤

0%

South Asian

👤

0%

Indigenous

👤

0%

Black

👤

0%

Middle Eastern

👤

0%

Latin

?

0%

Other/Unsure

🚴

00

People on bicycles counted

Start

[illegible]

