

ATTACHMENT 2 PLAN 43M- 2021

I CERTIFY THAT THIS PLAN IS REGISTERED IN THE LAND REGISTRY OFFICE FOR THE LAND TITLES DIVISION OF PEEL (ON-43) AND IS A COPY OF THE ORIGINAL PLAN AND ENTERED IN THE PUBLIC REGISTER FOR PROPERTY IDENTIFIER NO. 14021-0442(LT) AND THE REQUIRED COMMENTS ARE REGISTERED AS PLAN DOCUMENT NO. 21-01074

FRANCISCO COLLAPO
REPRESENTATIVE FOR LAND REGISTRY

THIS PLAN COMPREHENDS ALL OF PINS 14021-0442(LT)

PLAN OF SURVEY OF
PART OF LOT 5
CONCESSION 10, NORTHERN DIVISION
CITY OF BRAMPTON
REGIONAL MUNICIPALITY OF PEEL
(GEOGRAPHIC TOWNSHIP OF TORONTO GORE, COUNTY OF PEEL)

SCALE = 1 : 500

GUIDO PAPA SURVEYING
A DIVISION OF J. D. BARNES LIMITED

METRIC DISTANCES AND COORDINATES SHOWN HEREON ARE IN METRES AND CAN BE CONVERTED TO FEET BY DIVIDING BY 0.3048

OWNER'S CERTIFICATE:

I CERTIFY THAT:

- BLOCK 1 TO 20, BOTH INCLUSIVE, THE STREET MOWINGS, NAMELY BLOCKS 21, 22 AND 23 AND THE STREET, NAMELY DAVENFIELD CIRCLE.
- THE STREET AND STREET MOWINGS ARE HEREBY DEDICATED AS PUBLIC HIGHWAYS TO THE CORPORATION OF THE CITY OF BRAMPTON.

DATED THE 6TH DAY OF JUNE 2021

GURAY DEVELOPMENTS INC.

Guray

I HAVE THE AUTHORITY TO BIND THE CORPORATION

Sau/Salsano

SAN/SALSAO (A.S.O.)
I HAVE THE AUTHORITY TO BIND THE CORPORATION

SURVEYOR'S CERTIFICATE:

I CERTIFY THAT:

- THIS SURVEY AND PLAN ARE CORRECT AND IN ACCORDANCE WITH THE SURVEY ACT, THE SURVEYORS ACT AND THE LAND TITLES ACT AND REGULATIONS MADE UNDER THEM.
- THE SURVEY WAS COMPLETED ON THE 13TH DAY OF APRIL 2021

DATE: MAY 27, 2016

Guido J. Papa
GUIDO PAPA SURVEYING

NOTE:
BEARINGS SHOWN HEREON ARE GRID BEARINGS AND ARE REFERRED TO THE UTM GRID COORDINATE SYSTEM (NAD-1983 ORIGINAL), HORIZONTAL CONTROL MONUMENTS: HM 0421900045 N: 494874.039 E: 803503.982 HM 1031880144 N: 4947653.373 E: 804676.147
ZONE 17, CENTRAL MERIDIAN = 810000" LONGITUDE.
DISTANCES SHOWN HEREON ARE GROUND DISTANCES AND CAN BE CONVERTED TO GRID BY APPLYING A CORRECTION SCALE FACTOR OF 0.999712955

■ DENOTES SURVEY MONUMENT FOUND
□ DENOTES SURVEY MONUMENT PLANTED
□ DENOTES STANDARD IRON BAR
□ DENOTES IRON BAR
□ DENOTES CUT CROSS
□ DENOTES WITNESS
□ DENOTES NOT IDENTIFIABLE
□ DENOTES PLAN 43R-32194
□ DENOTES PLAN 43R-24972
□ DENOTES GUIDO PAPA SURVEYING LTD.
ALL PLANTED MONUMENTS ARE IRON BARS UNLESS NOTED OTHERWISE
ALL FOUND MONUMENTS SHOWN HEREON WERE PLANTED BY GUIDO PAPA SURVEYING LTD. O.L.S. UNLESS NOTED OTHERWISE.

INTEGRATION DATA		
COORDINATE TABLE UTM (E7) NAD83, ORIGINAL		
POINT	NORTHING	EASTING
1	494874.039	803503.982
2	494874.039	803503.982
3	494874.039	803503.982
4	494874.039	803503.982
5	494874.039	803503.982
6	494874.039	803503.982
7	494874.039	803503.982
8	494874.039	803503.982
9	494874.039	803503.982
10	494874.039	803503.982
11	494874.039	803503.982
12	494874.039	803503.982
13	494874.039	803503.982
14	494874.039	803503.982
15	494874.039	803503.982
16	494874.039	803503.982
17	494874.039	803503.982
18	494874.039	803503.982
19	494874.039	803503.982
20	494874.039	803503.982
21	494874.039	803503.982
22	494874.039	803503.982
23	494874.039	803503.982
24	494874.039	803503.982
25	494874.039	803503.982
26	494874.039	803503.982
27	494874.039	803503.982
28	494874.039	803503.982
29	494874.039	803503.982
30	494874.039	803503.982
31	494874.039	803503.982
32	494874.039	803503.982
33	494874.039	803503.982
34	494874.039	803503.982
35	494874.039	803503.982
36	494874.039	803503.982
37	494874.039	803503.982
38	494874.039	803503.982
39	494874.039	803503.982
40	494874.039	803503.982
41	494874.039	803503.982
42	494874.039	803503.982
43	494874.039	803503.982
44	494874.039	803503.982
45	494874.039	803503.982
46	494874.039	803503.982
47	494874.039	803503.982
48	494874.039	803503.982
49	494874.039	803503.982
50	494874.039	803503.982
51	494874.039	803503.982
52	494874.039	803503.982
53	494874.039	803503.982
54	494874.039	803503.982
55	494874.039	803503.982
56	494874.039	803503.982
57	494874.039	803503.982
58	494874.039	803503.982
59	494874.039	803503.982
60	494874.039	803503.982
61	494874.039	803503.982
62	494874.039	803503.982
63	494874.039	803503.982
64	494874.039	803503.982
65	494874.039	803503.982
66	494874.039	803503.982
67	494874.039	803503.982
68	494874.039	803503.982
69	494874.039	803503.982
70	494874.039	803503.982
71	494874.039	803503.982
72	494874.039	803503.982
73	494874.039	803503.982
74	494874.039	803503.982
75	494874.039	803503.982
76	494874.039	803503.982
77	494874.039	803503.982
78	494874.039	803503.982
79	494874.039	803503.982
80	494874.039	803503.982
81	494874.039	803503.982
82	494874.039	803503.982
83	494874.039	803503.982
84	494874.039	803503.982
85	494874.039	803503.982
86	494874.039	803503.982
87	494874.039	803503.982
88	494874.039	803503.982
89	494874.039	803503.982
90	494874.039	803503.982
91	494874.039	803503.982
92	494874.039	803503.982
93	494874.039	803503.982
94	494874.039	803503.982
95	494874.039	803503.982
96	494874.039	803503.982
97	494874.039	803503.982
98	494874.039	803503.982
99	494874.039	803503.982
100	494874.039	803503.982

THE UTM COORDINATES CANNOT, IN THEMSELVES, BE USED TO RE-ESTABLISH BOUNDARIES OR BOUNDARIES SHOWN ON THIS PLAN AND ARE TO AN URBAN ACCURACY IN ACCORDANCE WITH SECTION 14 (2) OF OREG. 216/10.
ALL DISTANCES SHOWN ON THIS PLAN ARE GROUND DISTANCES AND CAN BE CONVERTED TO GRID BY APPLYING THE CORRECTION SCALE FACTOR OF 0.999712955.
BEARINGS SHOWN ON THIS PLAN ARE GRID BEARINGS

MUNICIPAL APPROVAL

APPROVED UNDER SECTION 51 OF THE PLANNING ACT, R.S.O. 1990, THIS 13TH DAY OF SEPTEMBER 2016

Marylin
MARYLYN BARNES & INFRASTRUCTURE SERVICES OFFICE CORPORATION OF THE CITY OF BRAMPTON

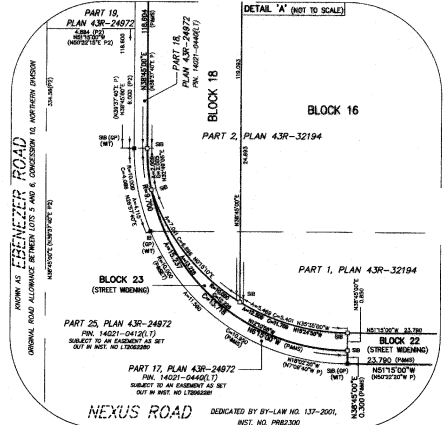
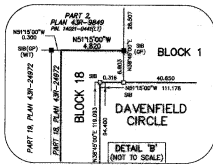
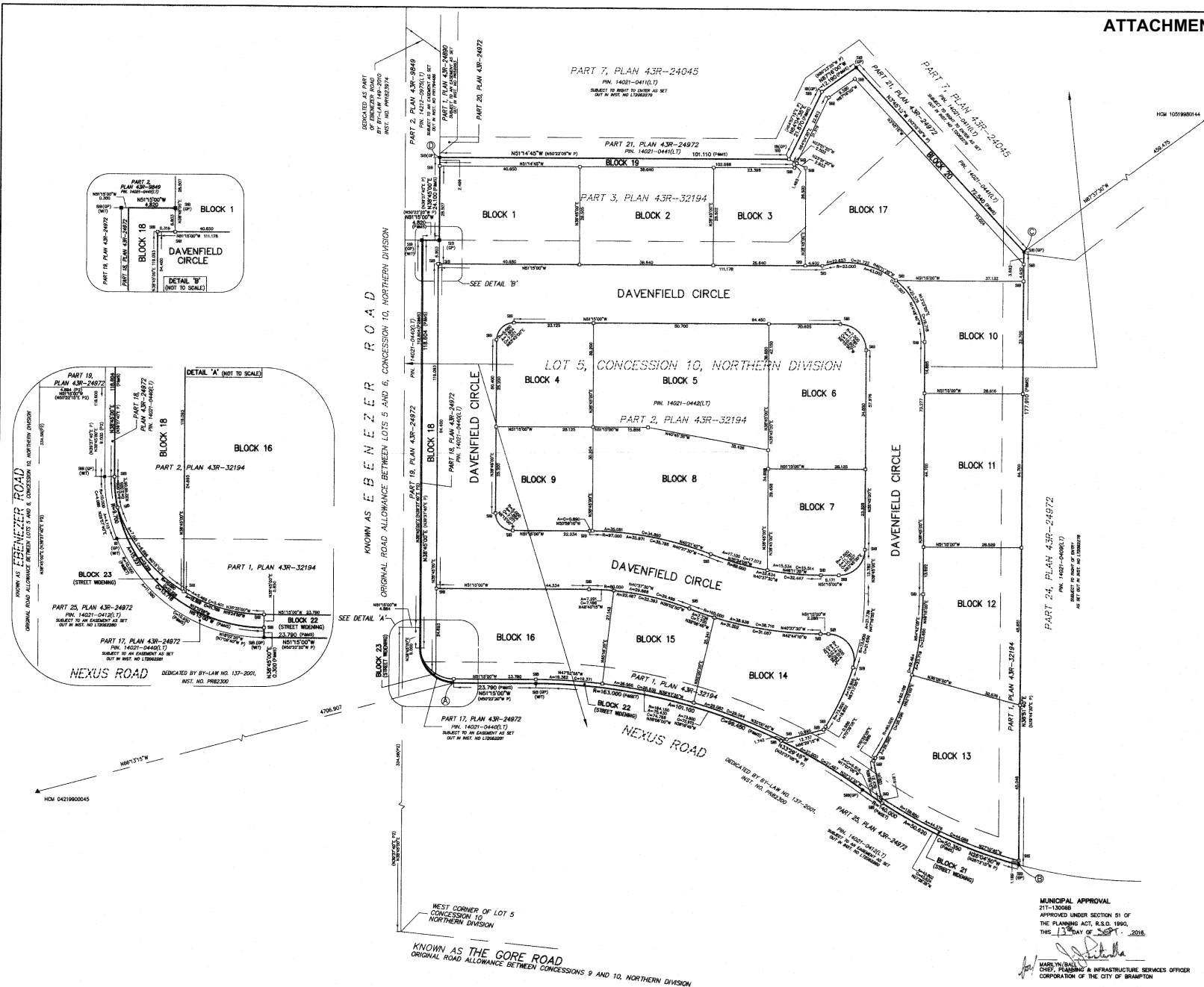
TOTAL AREA OF SUBDIVISION = 29638.63 Sq. m.



GUIDO PAPA SURVEYING
A Division of J.D. Barnes Limited
211 BRIMLEY AVE. W. TORONTO, ONT. M6P 1B5
TEL: (416) 241-2121 FAX: (416) 241-2122
www.guidopapa.com

B.N.C. 000000
L.A.K. 000000
02/12/2016
15-18-060-01

GPS REF No. 14-528



KNOWN AS EBENEZER ROAD
ORIGINAL ROAD ALLOWANCE BETWEEN LOTS 5 AND 6, CONCESSION 10, NORTHERN DIVISION

KNOWN AS THE GORE ROAD
ORIGINAL ROAD ALLOWANCE BETWEEN CONCESSIONS 9 AND 10, NORTHERN DIVISION