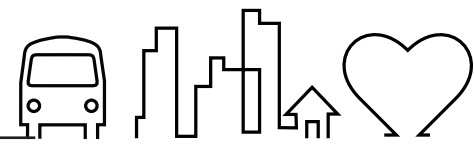
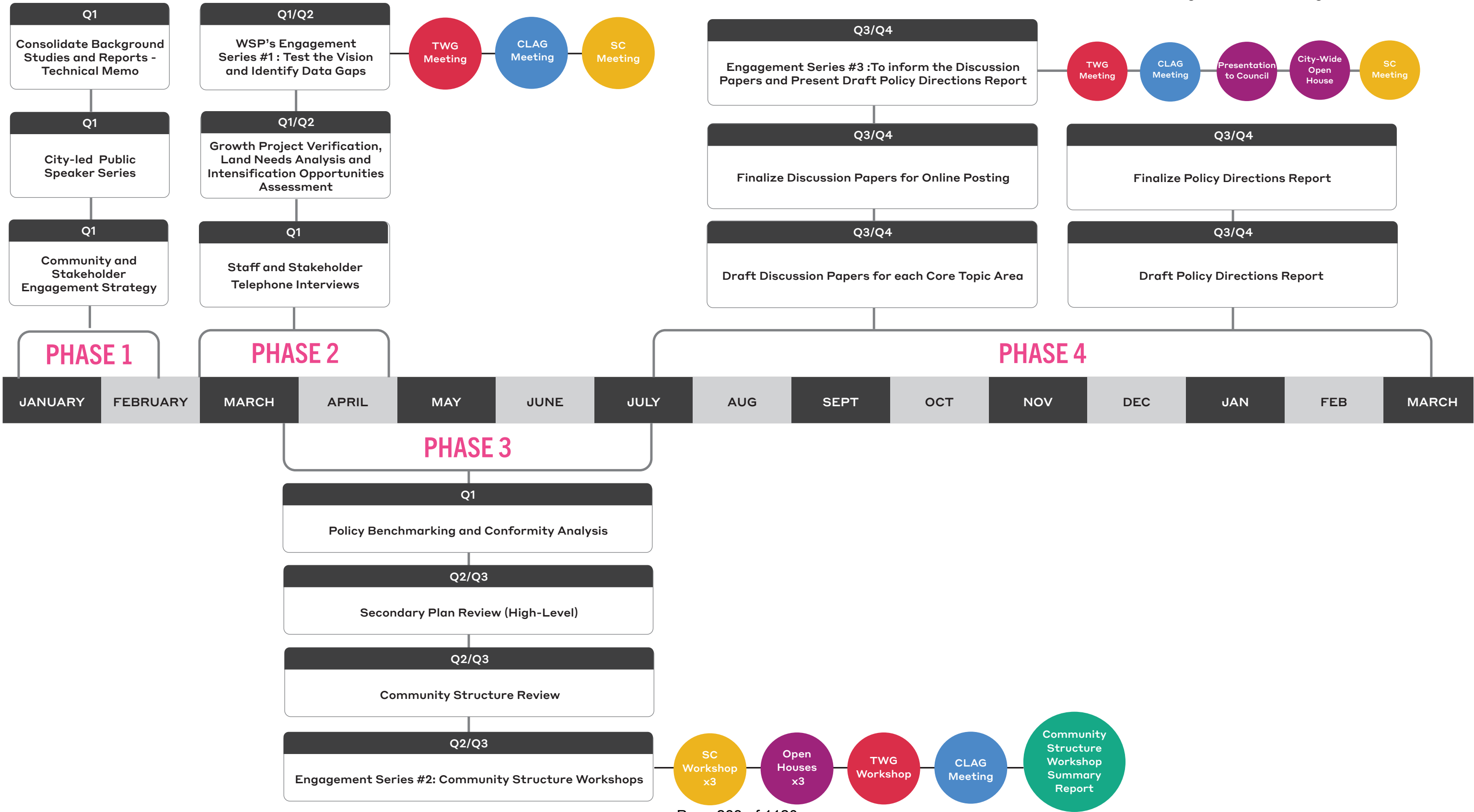


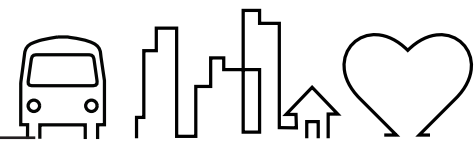
WORKPLAN



- Technical Working Group (TWG)
- Community Leaders Advisory Group (CLARG)
- Steering Committee (SC)
- Project Planning Tasks
- Meetings and Public Meetings



WORKPLAN



- Technical Working Group (TWG)
- Community Leaders Advisory Group (CLARG)
- Steering Committee (SC)
- Project Planning Tasks
- Meetings and Public Meetings

