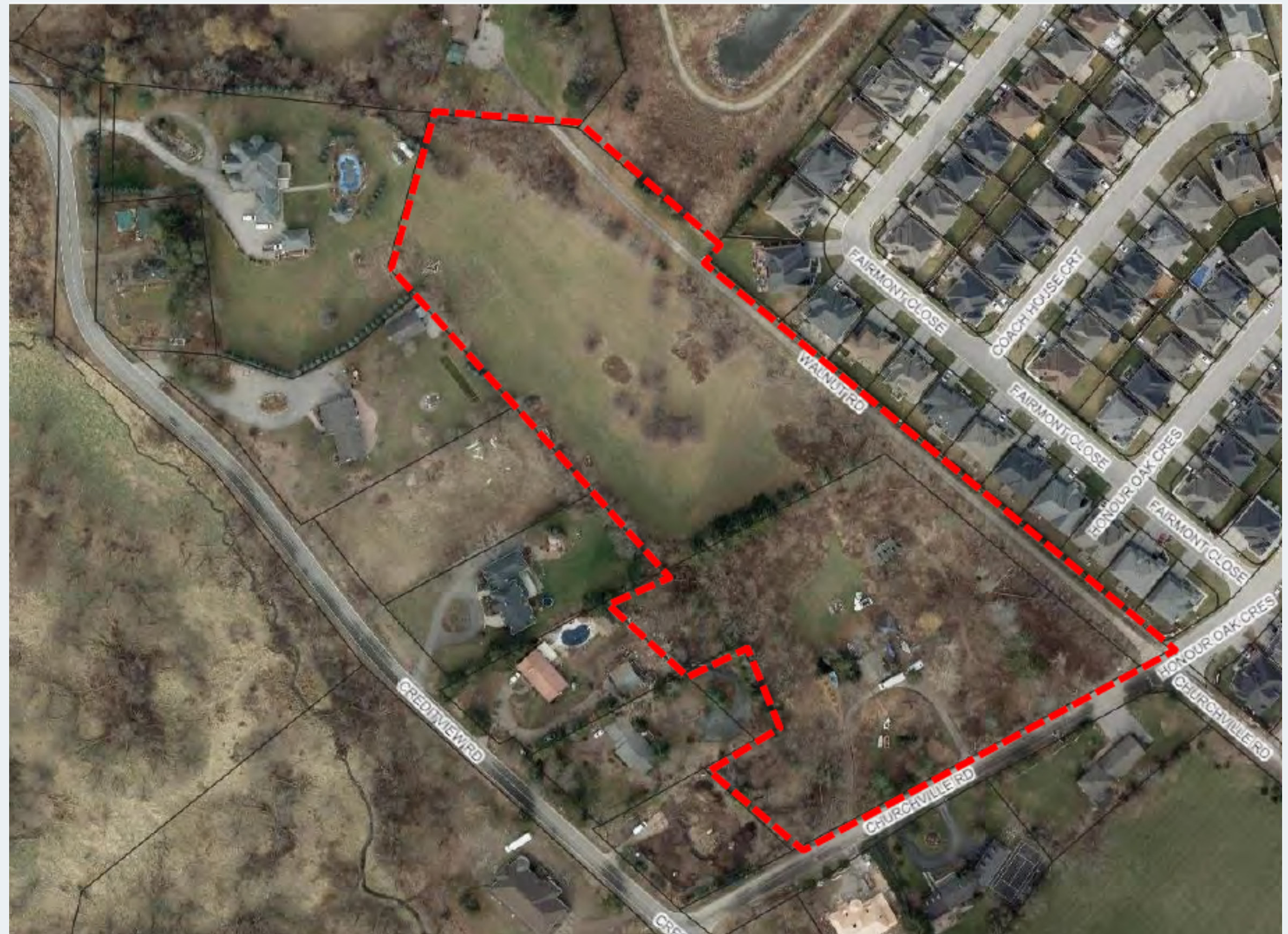




8265 Churchville Road Brampton, ON

Vanessa Hicks, MHBC



Subject Lands (includes 8265 Churchville Road)

- Listed on the Register in 2009;
- Listing Candidate Summary Report,
- "2 1/2 storey, buff brick, Dutch Colonial style home" c. 1918;
- design/physical and contextual values;



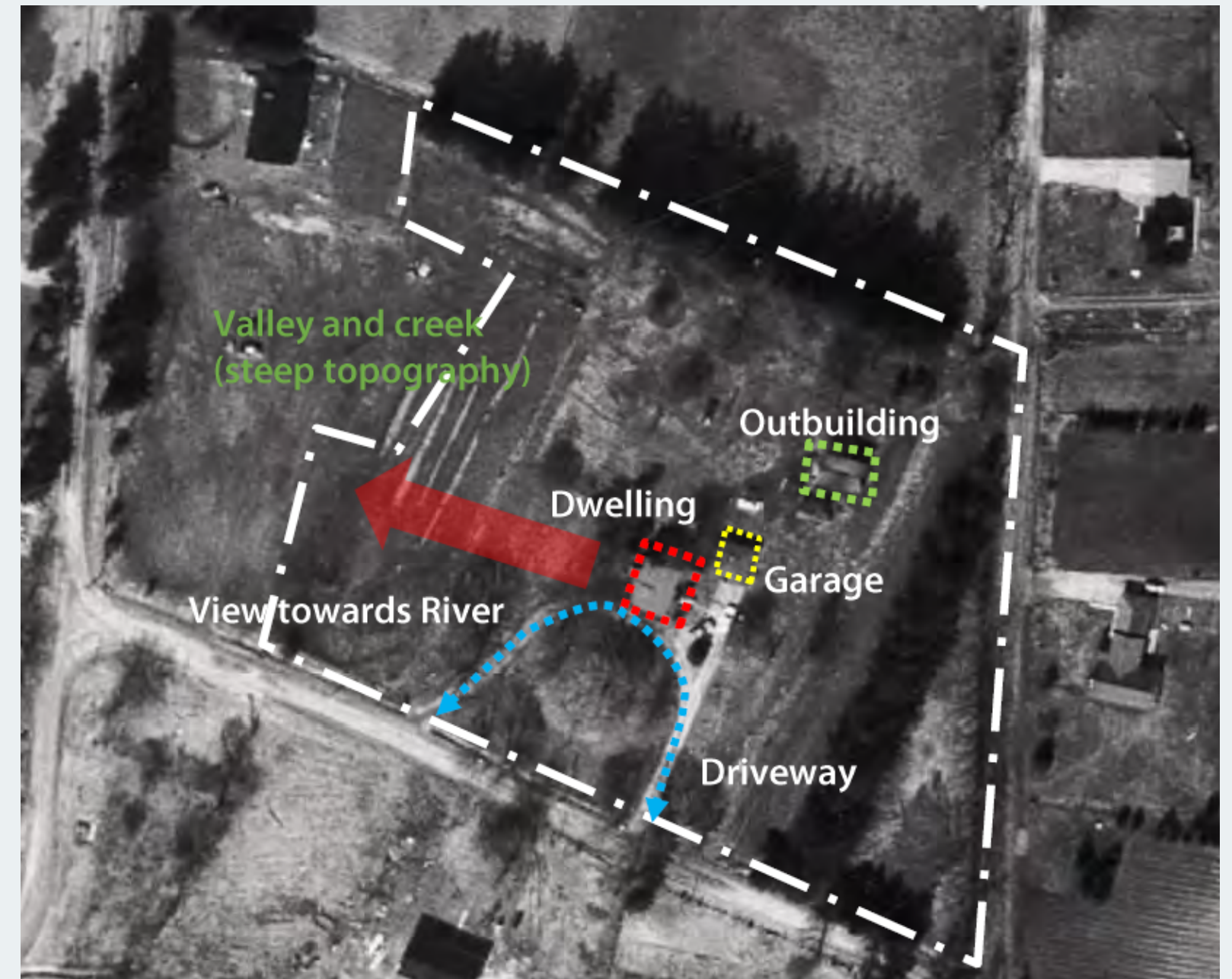
Heritage Status

REVIEW OF HIA

SITE FEATURES

Some features are of CHVI, others are not

- Dwelling;
- Outbuilding;
- Garage;
- Driveway
- Valley and Creek;
- Views.



1968 aerial photo

CONDITION



CONDITION



SUMMARY OF CHVI

- Dwelling representative of Dutch Colonial Revival style with Craftsman influences;
- Garage and outbuilding not considered heritage features/attributes of the site.
- Theme of settlement of Chinguacousy Twp.
- Trimble farm and Clifford Bennett (c.1921);
- Original farm components removed;
- Historically related to its surroundings, facing the Credit River.



(bottom) 99 Elizabeth St. S., (top)
Sears Homes 1927-1932 Catalogue

The map displays a residential development layout. Block 31 is a Residential Reserve (0.043 ha). Block 32 is a Parkette (0.122 ha). Block 33 contains 30 numbered lots, with a red star marking lot 21. Block 34 is a Natural Heritage System (NHS) (0.762 ha). The development is bordered by Walnut Road to the north and Churchillville Road to the east. Surrounding areas are labeled as Existing Residential. The map includes various boundary lines, lot numbers, and area measurements.

EXISTING
RESIDENTIAL

**EXISTING
RESIDENTIAL**

**EXISTING
RESIDENTIAL**

D O W DAVIS

IMPACT ANALYSIS

- Only feature of CHVI is the existing dwelling;
- Removal is a permanent adverse impact;
- Impact is considered modest given that the building is not early, rare, or unique. The property does not demonstrate a high level of historical or contextual value.



MITIGATION

- Documentation (photographs);
- Salvage of materials as opposed to being deposited as landfill;
- Selection of bricks set aside and incorporated as landscape features on-site;
- Potential entrance signage features, landscape features, etc.;
- Installation of a commemorative plaque;
- Details for commemoration be provided in a Commemoration Plan as part of future detailed planning applications.



QUESTIONS?