



**Reinventing the smart toilet experience.**





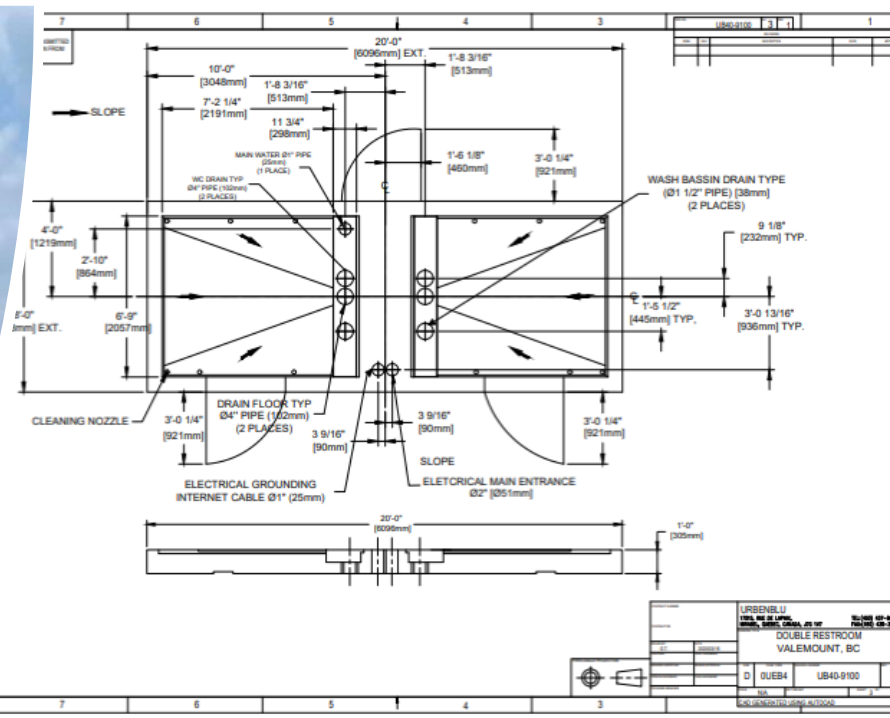
# Who we are !

- Manufacturer of smart, automatic self-cleaning toilets since 2013
- Concept originally from Europe, but not adapted to the Canadian/American climate ( can be used all year)
- Sole manufacturer of a product 100% Canadian/ North American





- 100% prefabricated washroom
- Washroom totally finished when delivered. Delivered on a 12 inch concrete pad
- Architect and Engineer plan given for site preparation
- Can be used right after installation





## Interior and exterior Finish

### Interior:

- Vandal-proof
- Anti-Ligature hooks
- Walls and floor are made of ultra high-performance fiber concrete. It is durable and easy to clean. MO fire rated.
- Galvanised Steel structure and rock wool isolation
- TDLR approved (Texas approbation for tornadoes, Earthquakes and hurricanes)





# Entirely customizable

## Examples:

- Indoor and outdoor showers
- Office for park manager
- Area to put ice skates, changing rooms
- Provide electricity for the park (400 amps)
- Numeric keyboard to provide access outside of the opening hours
- Equipment for Splash Pads
- Drinking fountain
- Adult Changing table
- Extensive Green Roofs







## Exterior Finish

The exterior finish is at the customer's choice (Made with longboard Aluminum 1/8 inch thick. Other choices are available)

The 3 sides are corrugated finish (Color is customer's choice also)







# How it works

- Toilet Bowl cleaned, disinfected and dried after each use
- Cleaning cycle of the washroom every 10 users (recommended). The cycle takes 90 seconds to complete
- Remote control of the washroom (opening/closing hours, cleaning cycle, state of the toilet in real time)







# Mechanical Room





# Mechanical Room







is green !

## Show your Citizens that you care for the environment!

---

- Possibility to integrate extensive green roofs
- Low water consumption
- Hot Water on demand only (no Hot water tank)
- Lighting on demand only (LED lights are on only when washroom is in use)
- Sheet by Sheet toilet dispenser
- Controlled amount of hand Soap distributed
- Use of Eco-Responsible products
- Use of a white membrane



## Our washrooms are available in different sizes

Single : 1 toilet + 1 mechanical room (8x13)

Double : 2 toilets + 1 mechanical room (8x20)





# Vandal-proof and anti-graffiti

All facades are covered with an anti-graffiti protection

Our washrooms are equipped with a volumetric presence detector

Finally, no parts from user side can be disassembled

- Porcelain toilet covered with a fiber glass mold
- Mirror in stainless steel
- Cement Walls and floor
- Steel Structure





# Antimicrobial and anti-viral protection

The Urban Blu toilets are coated with an antimicrobial and antiviral protection, which kills 99,99% of germs and viruses, including COVID-19 and influenza.

The protection is effective for 1 year







**Built to last**

Made in Canada/North America

3 years warranty on parts and labour

10 years warranty on the structure