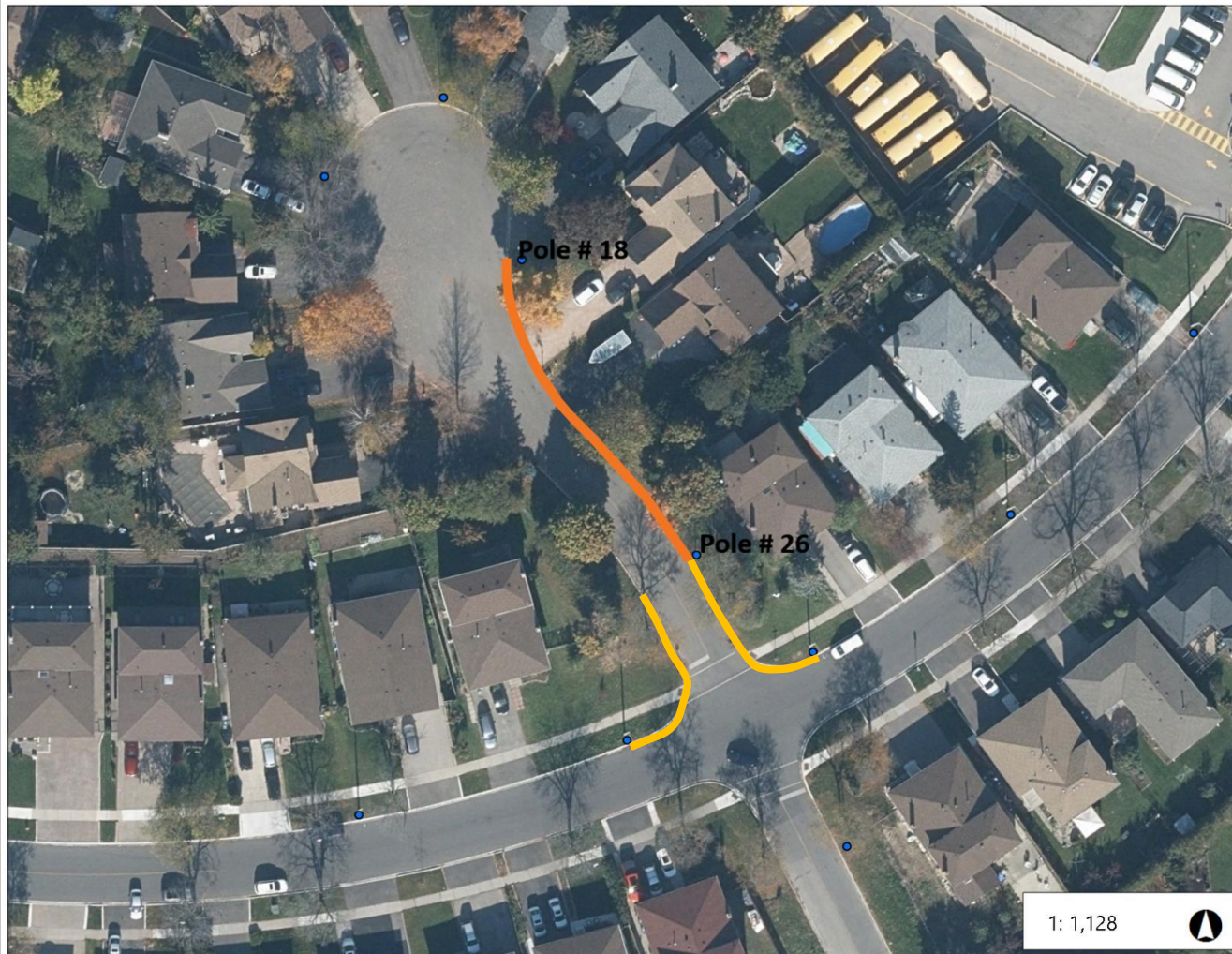




BRAMPTON

Recommended Parking Restrictions on Marmora Place (Ward 7)



Note: -

Recommended “No Parking, Anytime” restrictions on the east side of Marmora Place between a point 20 m north of Maitland Street and a point 70 m north of Maitland Street.

Legend:

— Proposed Parking Restrictions

— Existing Parking Restrictions

• Street Light Pole

57.3 0 28.66 57.3 Meters

This map is a user generated static output from an Internet mapping site and is for reference only. Data layers that appear on this map may or may not be accurate, current, or otherwise reliable.

THIS MAP IS NOT TO BE USED FOR NAVIGATION