

Government Relations Matters

Committee of Council
December 7, 2022



Regional Council Meeting

Thursday, December 8, 2022 @ 9:30 AM | Meeting agenda is available [here](#).

Staff reviewed the Regional Council agenda and reached out to relevant departments for comments.

8.1 Bill 23 “More Homes Built Faster Act” and Implications for the Region of Peel (Recommendation)

Overview:

- Changes to the Planning Act will remove planning authority from the Region of Peel.
- The development charges (DCs) revenue shortfall due to changes to the Development Charges Act, 1997 could be as high as \$2 billion over the next 10 years.
- The 2031 accelerated housing targets will impact Peel’s ability to provide infrastructure to support growth
- The DC revenue shortfall could reach \$6 billion if the Province’s housing targets are met.

Staff Comments (Planning):

- The report outlines potentially significant revenue loss for the Region due to Bill 23.
- Need for Housing Services to remain eligible for DCs to support the provision of non-market housing.
- Reduced ability to deliver non-market housing at the Regional level places additional housing pressures on Peel residents.

Recommendation:

- Support the recommendation

9.1 Provincial Decision on the New Region of Peel Official Plan (For Information)

Overview:

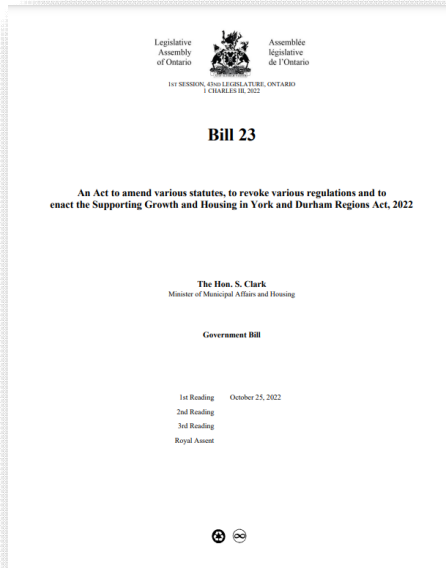
- The new Region of Peel Official Plan (OP), as approved by the Minister of Municipal Affairs and Housing, came into effect on November 4, 2022.
- The Minister's decision on the new Region of Peel Official Plan is final and not subject to appeal.

Staff Comments (Planning):

- On November 4, 2022 the Minister issued notice of decision approving the ROP, with 44 amendments
- The majority of amendments deal specifically with Caledon and housing keeping related matters
- Regional and Local staff were not consulted on the modifications in advance of the Minister's decision

Recommendation:

- Receive the report



December 5, 2022:

The Premier and the Prime Minister opened General Motors of Canada's (GM Canada) first full-scale electric vehicle (EV) manufacturing plant in Ingersoll the first of its kind in Canada.

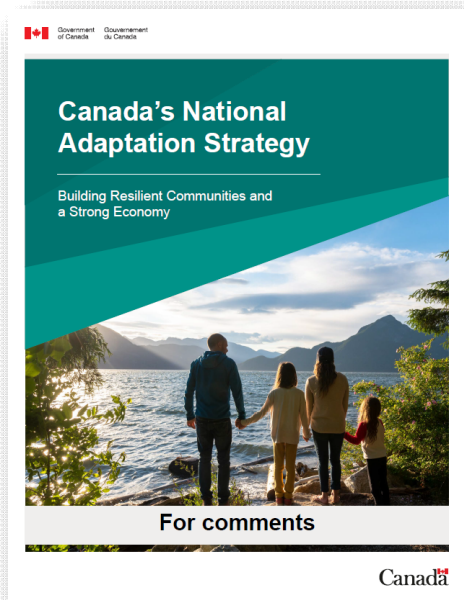
- The plant will build fully electric delivery vans – the BrightDrop Zevo 600
- The federal and provincial governments each provided \$258 million in funding.

November 28, 2022:

Bill 23, More Homes Built Faster Act, 2022 received Royal Assent.

November 24, 2022:

Announced additional \$1.4 million for the Landlord and Tenant Board, to hire over 35 additional staff to help with the high number of cases before the board.



November 24, 2022: Canada's National Adaptation Strategy

The government released the *Canada's National Adaptation Strategy: Building Resilient Communities and a Strong Economy* for engagement and final consultations.

The announcement included \$1.6 billion in new federal funding for municipalities and townships to build sustainable public infrastructure such as roads and bridges.

New federal funding will help implement the five priority areas of the Strategy:

- improving health and well-being
- building and maintaining resilient public infrastructure
- protecting and restoring nature and biodiversity
- supporting the economy and workers
- reducing the impacts of climate-related disasters



Bill 39, the Better Municipal Governance Act, 2022

On December 1, 2022 AMO's Executive Director, presented to the Standing Committee on Heritage, Infrastructure and Cultural Policy regarding Bill 39.

“Proposed changes to the Municipal Act which would allow a mayor to make law with the support of just one third of the council will disenfranchise elected councillors and potentially destabilize and undermine the authority of municipal government.”



2022 FCM Advocacy Days & Board of Directors Meeting December 5-8, 2022 in Ottawa

- Infrastructure
- Resilient communities
- Housing affordability

The background image is a dark, low-key photograph of a city street. On the right, a large, multi-story brick building with a prominent clock tower is visible. The clock tower has two faces and a pointed roof. To the left of the main building is a modern, curved structure with large windows. In the foreground, a bus stop shelter is visible, with the word "Wellington" on its top edge. A person is standing near the bus stop. The overall scene is dimly lit, with the building's lights providing some illumination.

THANK YOU!

