

Schedule 4

Sign Area Calculation Example

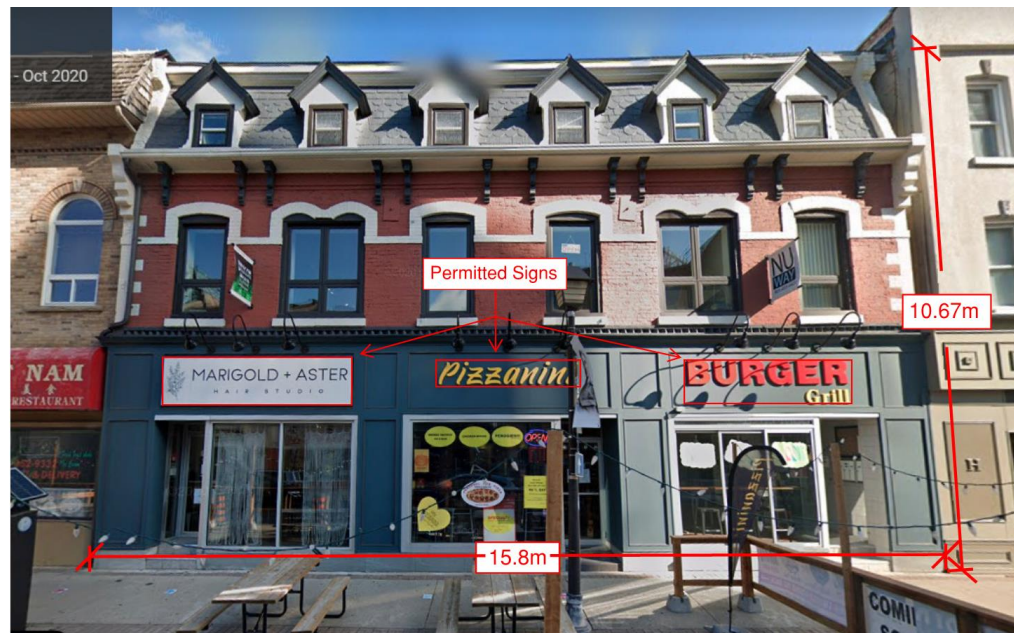
Current vs. Proposed.

Current Calculation

Elevation surface area of building: $15.8\text{m} \times 10.67\text{m} = 168.55\text{m}^2$

Permitted sign area = 10% of surface area to a maximum of 10m^2

Permitted sign area = $168.55\text{m}^2 \times 10\% = 16.86\text{m}^2$, therefore 10m^2 permitted to be split between tenants.



Proposed Calculation

Elevation surface area of unit: $4.88\text{m} \times 3.66\text{m} = 17.86\text{m}^2$

Permitted sign area = 20% of surface area to a maximum of 20m^2

Permitted sign area = $17.86\text{m}^2 \times 20\% = 3.57\text{m}^2$ (the current sign is 2.75m^2 in area)

Therefore, the tenant would be allowed an additional 0.82m^2 of signage

