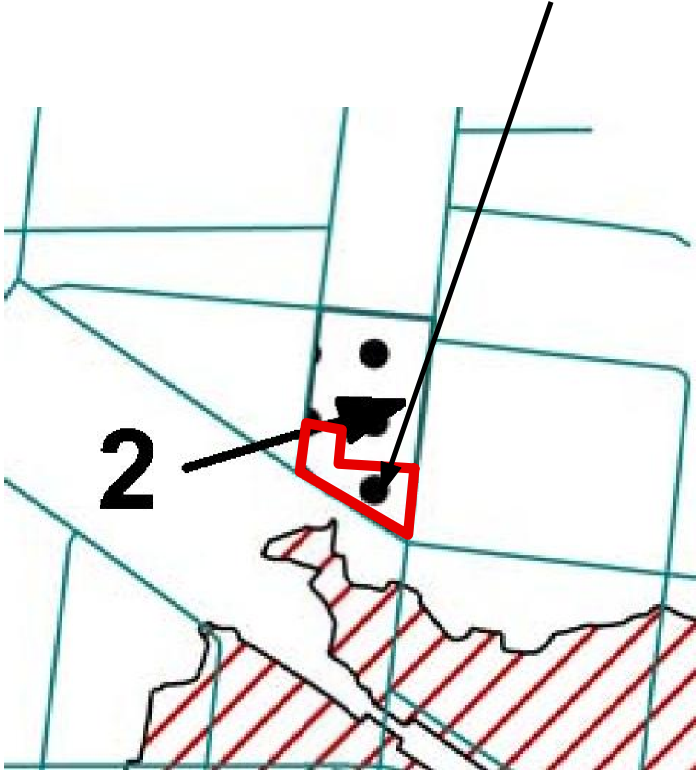


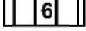

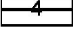
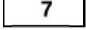

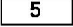



LANDS TO BE DELETED FROM SPECIAL POLICY AREA 2



EXTRACT FROM SCHEDULE SP7(C) OF THE DOCUMENT KNOWN AS THE DOWNTOWN BRAMPTON SECONDARY PLAN

	SUBJECT LANDS		SPECIAL POLICY AREA NO. 3		SPECIAL POLICY AREA NO. 6
	SPECIAL POLICY AREA NO. 1 (Refer to Policy 5.6.1)		SPECIAL POLICY AREA NO. 4		SPECIAL POLICY AREA NO. 7
	SPECIAL POLICY AREA NO. 2		SPECIAL POLICY AREA NO. 5 (Refer to Policy 5.6.5)		SPECIAL POLICY AREA NO. 8